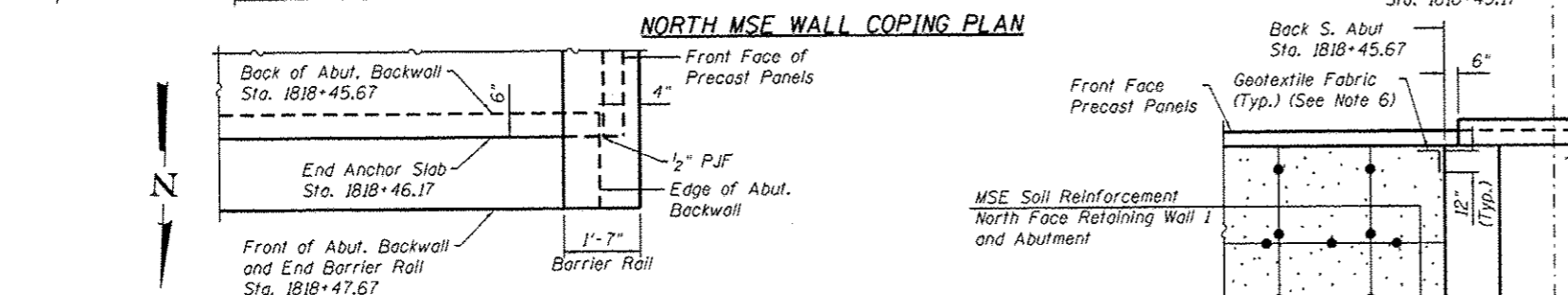
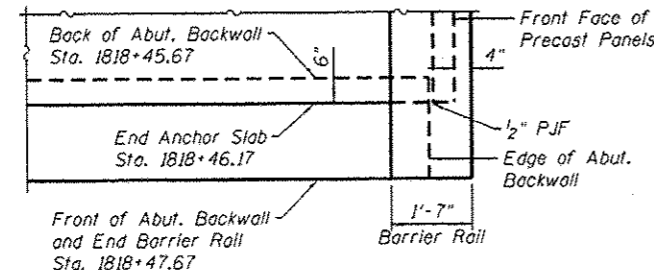


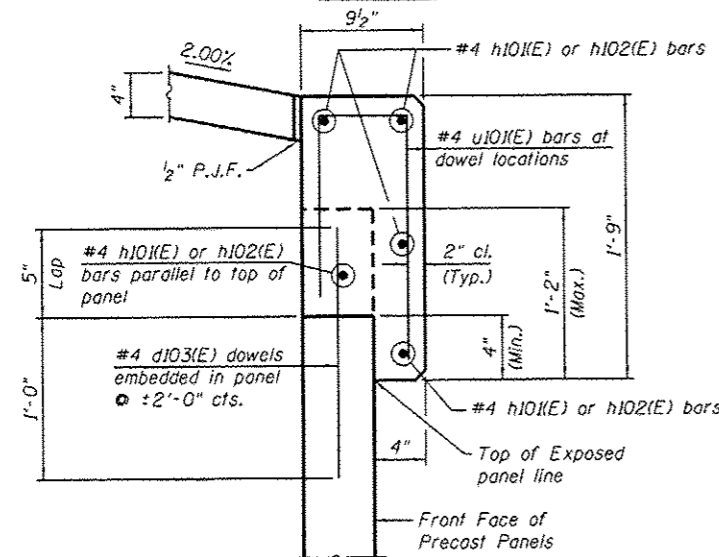
**NORTH MSE WALL COPING ELEVATION**  
(Facing South)



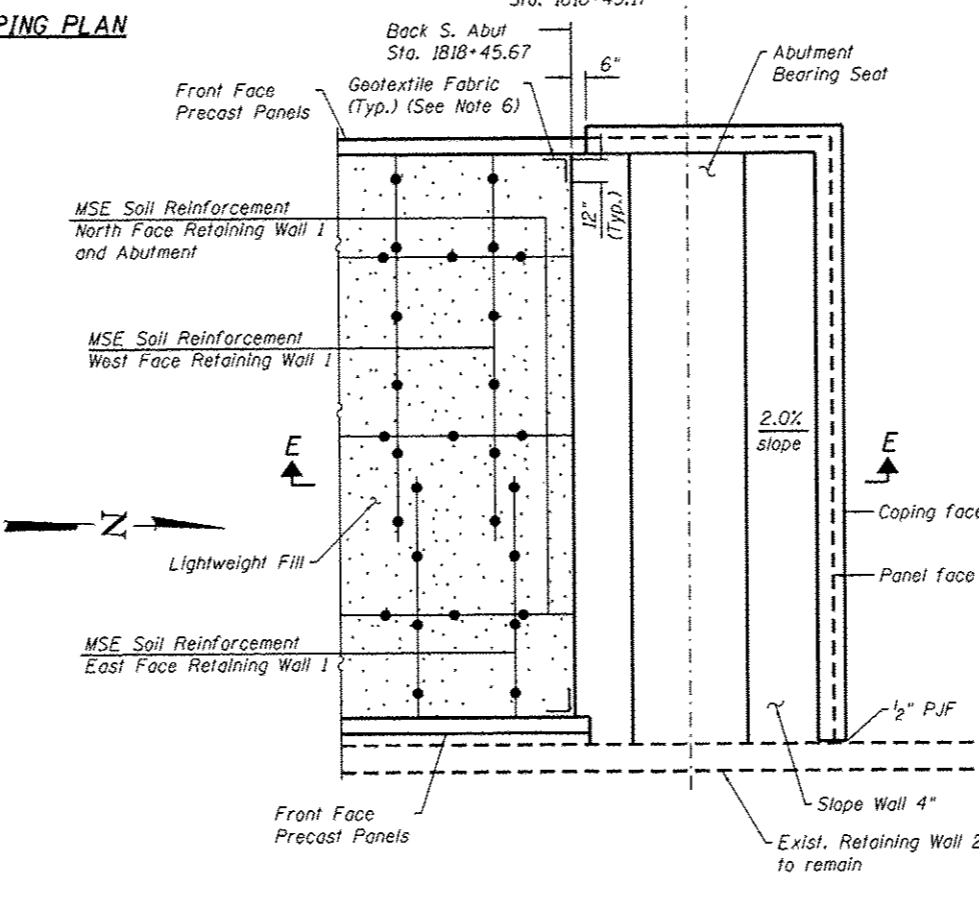
**NORTH MSE WALL COPING PLAN**



**DETAIL 1**



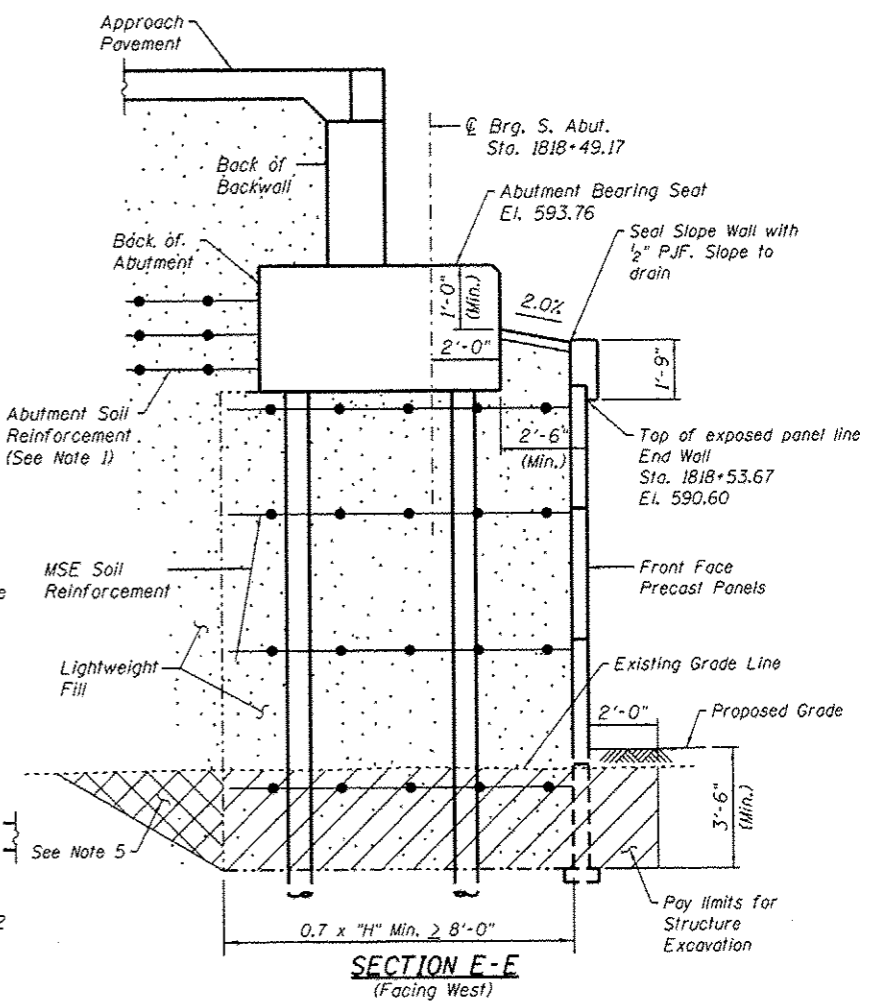
**MSE COPING SECTION D-D**



**PLAN DETAIL: MSE WRAP AROUND ABUTMENT**

**NOTES:**

1. The MSE wall supplier shall design the abutment soil reinforcement to resist a horizontal force of 4.6 k/ft of abutment. Cost included in cost of Mechanically Stabilized Earth Retaining Wall, Special.
2. Anchor Slabs end at Sta. 1818+46.17 where they overlap the abutment backwall by 6". Barrier Rails end at Sta. 1818+47.67 at front of abutment backwall. See Detail 1.
3. Bars noted thus, 7x3-#4 indicates 7 lines of #4 bars with 3 lengths per line.
4. See South Abutment sheets for abutment details.
5. If contractor elects to overexcavate beyond limits of Structure Excavation, this area shall be backfilled with Lightweight Fill. Overexcavation, additional Lightweight Fill or Aggregate Column Ground Improvement placed in the overexcavation area will not be measured for payment.
6. Cost of Geotextile Fabric is included in cost of Mechanically Stabilized Earth Retaining Wall, Special.
7. 1/2" P.J.F. is installed by Standard 1051.09. Cost is included in Slope Wall 4".



**SECTION E-E**  
(Facing West)

016120-60R28-508-Per06e1



USER NAME = dabozi1cd	DESIGNED - DEV	REVISED - 6/24/2014 DD
CHECKED - ATB	REVISED	
PLOT SCALE = N.T.S.	DRAWN - BRD	REVISED
PLOT DATE = 4/28/2014	CHECKED - EJO	REVISED

STATE OF ILLINOIS  
DEPARTMENT OF TRANSPORTATION

MSE WRAP AROUND DETAILS  
STRUCTURE NO. 016-1720

SHEET NO. RW1-08 OF RW1-17 SHEETS

F.A.I. RTE. 90/94/290	SECTION 2013-010R	COUNTY COOK	TOTAL SHEETS 747	SHEET NO. 526
CONTRACT NO. 60W28			ILLINOIS FED. AID PROJECT NUMBER	