

TYPICAL SECTION 1
(Sta. 1838+23.17 to Sta. 1838+98.00)
(Facing West)

* Shoulder widths vary from 5'-2 1/8" at Sta. 1838+23.17 to 4'-0" at Sta. 1838+44.32

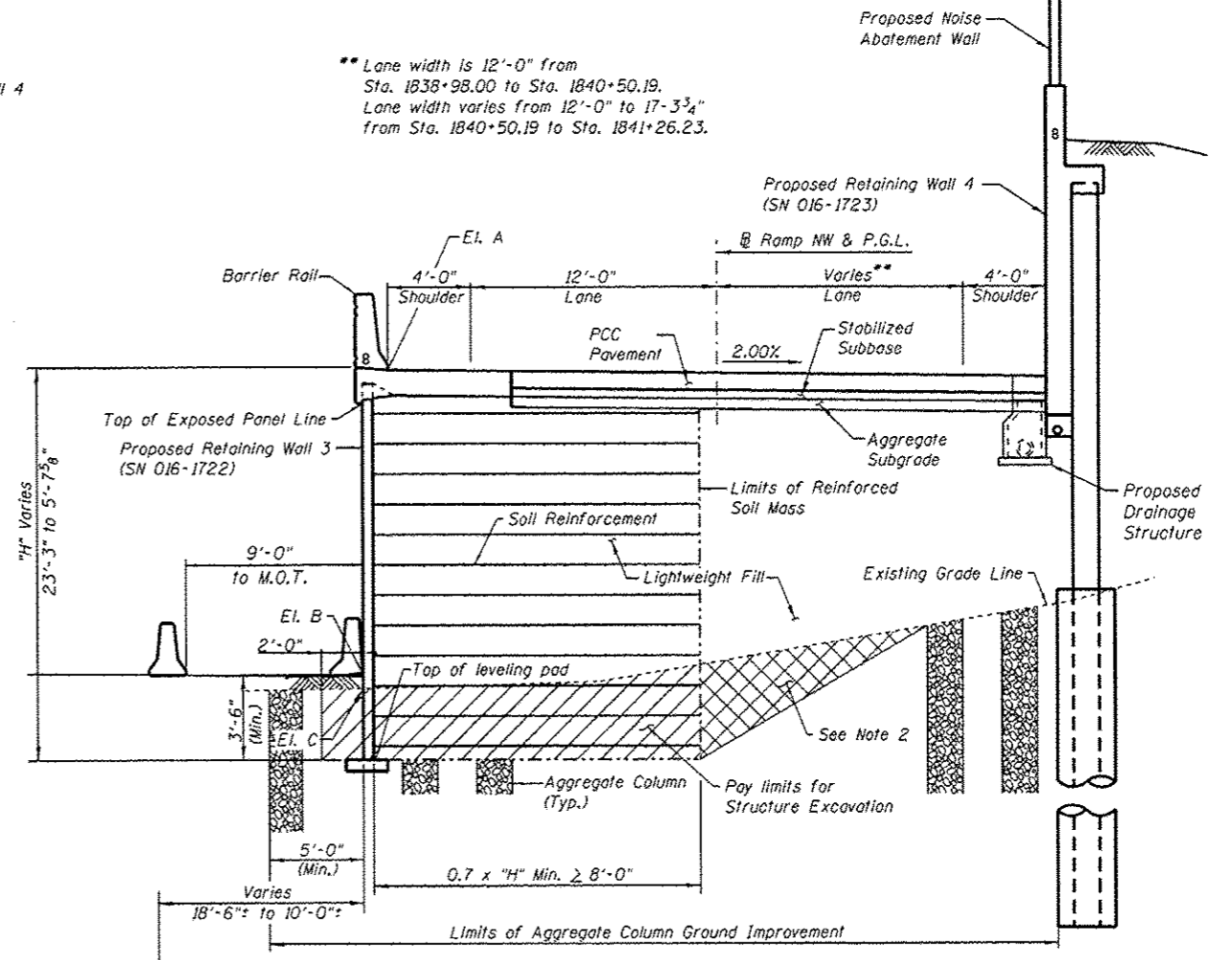
TABLE 2

Station	Offset	Downstream Elevation
1838+55.00	16'-0" Rt.	589.56
1839+85.00	13'-0" Rt.	573.29
1840+42.69	16'-0" Rt.	574.58
1841+26.37	21'-4" Rt.	575.00

TABLE 1

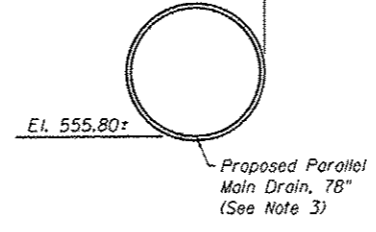
Station	Offset	Elevation A	Elevation B	Elevation C
1838+23.17	18'-5 1/8" Lt.	600.96	575.24	575.67
1838+25.00	18'-4" Lt.	600.83	575.26	575.67
1838+44.32	17'-3" Lt.	599.47	575.44	576.04
1838+50.00	17'-3" Lt.	599.08	575.51	576.05
1838+75.00	17'-3" Lt.	597.34	575.81	576.13
1839+00.00	17'-3" Lt.	595.61	575.98	576.00
1839+25.00	17'-3" Lt.	593.87	576.14	576.15
1839+50.00	17'-3" Lt.	592.14	576.33	576.33
1839+75.00	17'-3" Lt.	590.40	576.39	576.40
1840+00.00	17'-3" Lt.	588.67	576.46	576.46
1840+25.00	17'-3" Lt.	586.93	576.57	576.58
1840+50.00	17'-3" Lt.	585.21	576.69	576.69
1840+75.00	17'-3" Lt.	583.63	576.77	576.78
1841+00.00	17'-3" Lt.	582.24	576.86	576.87
1841+25.00	17'-3" Lt.	581.04	576.93	576.93
1841+50.00	17'-3" Lt.	580.04	576.99	577.00
1841+75.00	17'-3" Lt.	579.23	577.11	577.13
1841+78.17	17'-3" Lt.	579.14	577.13	577.14

Elevation A - Edge of Shoulder at Face of Barrier Rail
Elevation B - Proposed Grade Line at Front Face of Wall
Elevation C - Existing Grade Line at Front Face of Wall



** Lane width is 12'-0" from Sta. 1838+98.00 to Sta. 1840+50.19. Lane width varies from 12'-0" to 17'-3 3/4" from Sta. 1840+50.19 to Sta. 1841+26.23.

TYPICAL SECTION 2
(Sta. 1838+98.00 to Sta. 1841+78.17)
(Facing West)



NOTES:

- Contractor shall coordinate construction of Retaining Wall 3 (SN 016-1722) with Retaining Wall 4 (SN 016-1723), Retaining Wall 40 (SN 016-1809), and abutment of Ramp NW (SN 016-1705).
- If contractor elects to overexcavate beyond limits of Structure Excavation, this area shall be backfilled with Lightweight Fill. Overexcavation, additional Lightweight Fill or Aggregate Column Ground Improvement placed in the overexcavation area will not be measured for payment.
- Proposed 78" Main Drain to be jacked in place prior to Retaining Wall 3 construction. See Drainage Plans.
- Approach Slab for NW Flyover (SN 016-1705) is between Anchor Slabs from Sta. 1838+23.17 to Sta. 1838+53.17. See bridge plans.

BILL OF MATERIAL

Item	Unit	Quantity
Structure Excavation	Cu. Yd.	870
Lightweight Cellular Concrete Fill	Cu. Yd.	5,902
Mechanically Stabilized Earth Retaining Wall, Special	Sq. Ft.	6,512

0161722-60W28-503-GenNote



USER NAME = dabezicd	DESIGNED - DEV	REVISION 6/24/2014 DD
CHECKED - ATB	DRAWN - BRD	
PLOT SCALE = N.T.S.	CHECKED - EJO	
PLOT DATE = 4/28/2014		

STATE OF ILLINOIS
DEPARTMENT OF TRANSPORTATION

TYPICAL SECTIONS
STRUCTURE NO. 016-1722
SHEET NO. RW3-030F/RW3-12 SHEETS

F.A.I. RTE. 90/94/290	SECTION 2013-010R	COUNTY COOK	TOTAL SHEETS 747	SHEET NO. 547
ILLINOIS FED. AID PROJECT NUMBER			CONTRACT NO. 60W28	