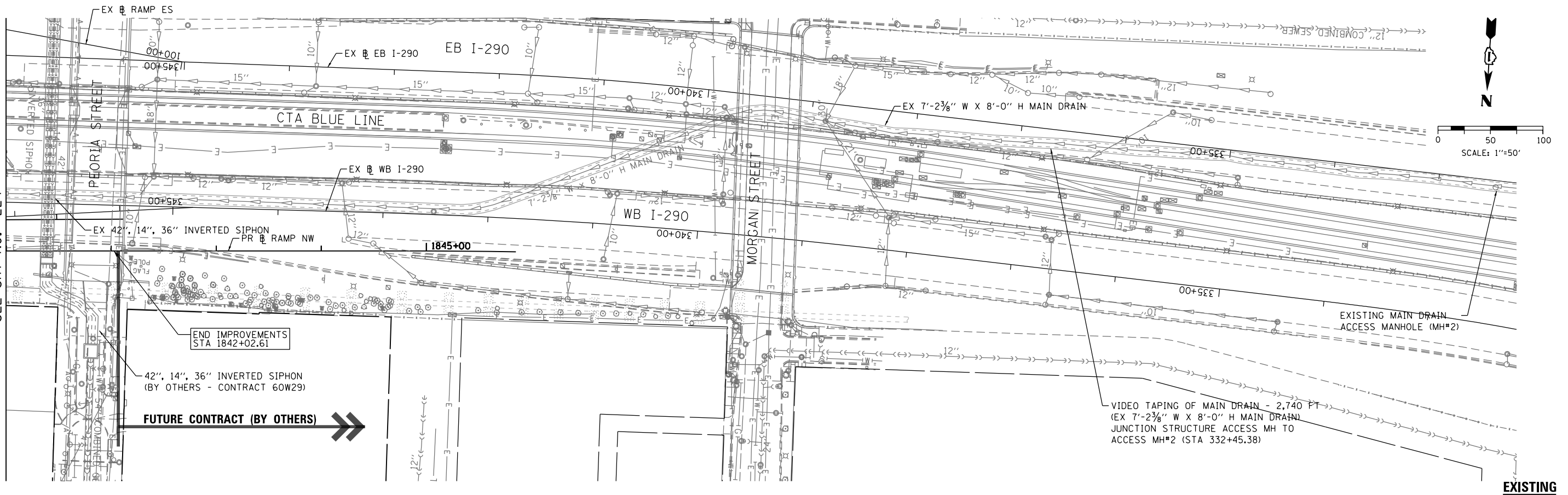


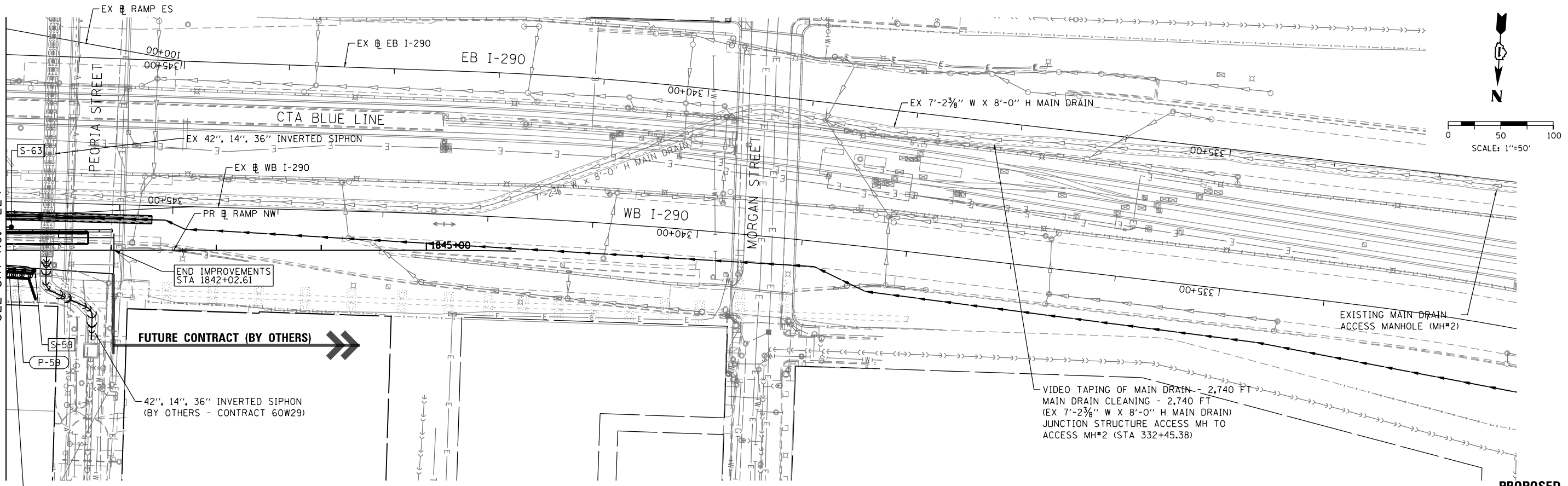
FILE PATH = p:\388035-p\m\1\escomon\line\local\PAECD\00\Documents\01_Americas\Transportation\62629938_Circle\Phase_1\1000_CAD\005_Roadway\Sheets\60W28_sht-Drain-06

MATCH LINE STA 1841+00
SEE SHT NO. 224



EXISTING

MATCH LINE STA 1841+00
SEE SHT NO. 224



PROPOSED



D160W28-sht-Drain-06
USER NAME = chiuw
PLOT SCALE = 100.0000' / in.
PLOT DATE = 4/28/2014

| | | | |
|------------|-----------|-----------|--|
| DESIGNED - | DMS/ AFC | REVISED - | |
| DRAWN - | DMS/ AFC | REVISED - | |
| CHECKED - | E E Y | REVISED - | |
| DATE - | 4/28/2014 | REVISED - | |

STATE OF ILLINOIS
DEPARTMENT OF TRANSPORTATION

DRAINAGE AND UTILITY PLAN
RAMP NW

SCALE: 1" = 50' SHEET 6 OF 6 SHEETS STA. 1841+00 TO STA. 1846+00

| | | | | |
|---------------------------|-----------|--------|--------------|-----------|
| F.A.I. RTE. | SECTION | COUNTY | TOTAL SHEETS | SHEET NO. |
| 90/94/290 | 2013-010R | COOK | 747 | 225 |
| CONTRACT NO. 60W28 | | | | |
| ILLINOIS FED. AID PROJECT | | | | |