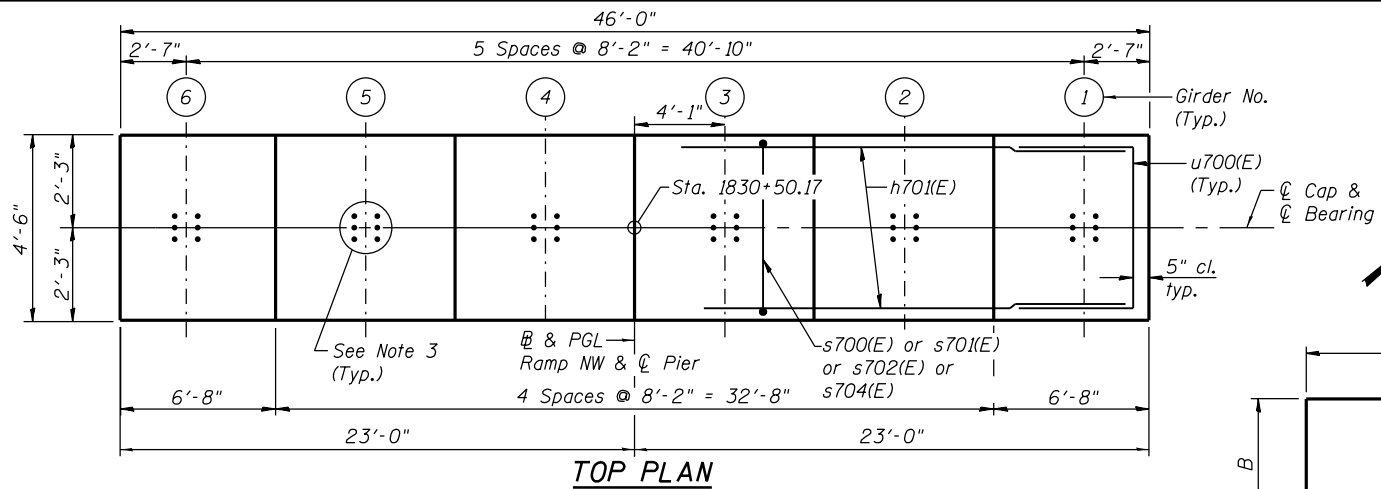


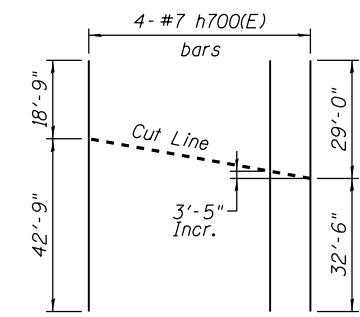
NOTES:

1. Pour steps monolithically with cap.
2. ϕ of Pier is radial to ϕ Ramp NW at Sta. 1830+50.17.
3. For Anchor Bolts Details see sheets S-110 and S-111.
4. For Architectural Details see sheets S-143 thru S-145.
5. See sheet S-131 for Sections and Details.
6. For Drilled Shaft and Footing construction details, see sheet S-10.

* The quantities and detailing are based on the estimated elevations shown on the plans. The actual elevations may differ at each shaft and corresponding adjustments shall be made to the drilled shaft and reinforcement quantities and payment limits.



TOP PLAN



FIELD CUTTING DIAGRAM

Order h700(E) bars full length. Cut as shown and use remainder of bars

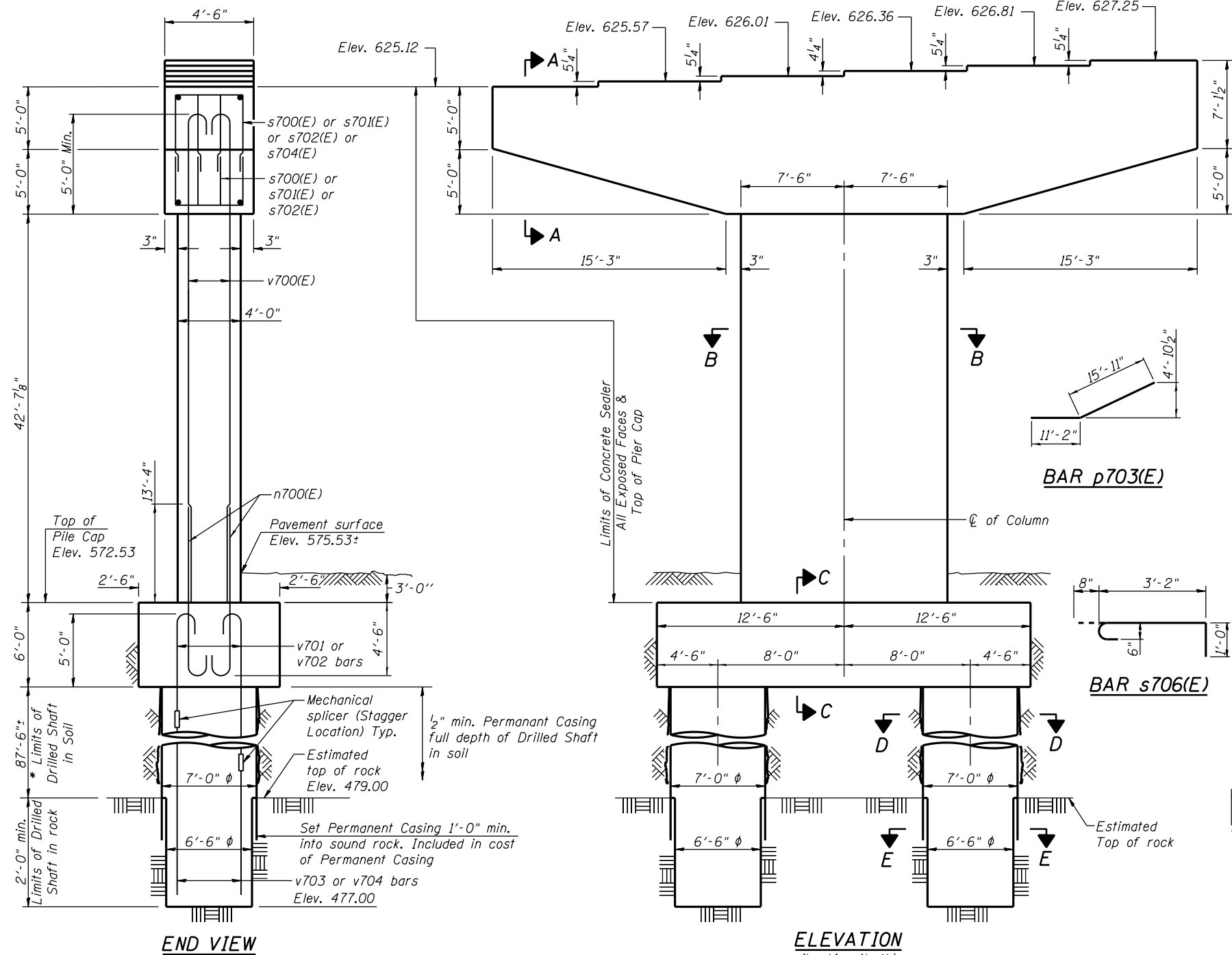
MIN. LAP LENGTH

- #6 bars: 3'-10"
- #8 bars: 6'-9"
- #11 bars: 13'-4"

BILL OF MATERIAL

Bar	No.	Size	Length	Shape
h700(E)	8	#7	61'-6"	—
h701(E)	20	#7	45'-2"	—
h702(E)	24	#5	7'-2"	—
h703(E)	12	#5	6'-0"	—
h704(E)	18	#7	24'-6"	—
n700(E)	70	#11	19'-5"	—
p700(E)	9	#11	49'-1"	—
p701(E)	9	#11	48'-7"	—
p702(E)	9	#11	44'-0"	—
p703(E)	12	#8	27'-1"	—
s700(E)	24	#6	11'-6"	—
s701(E)	64	#6	13'-4"	—
s702(E)	160	#6	16'-10"	—
s703(E)	12	#4	4'-10"	—
s704(E)	28	#6	18'-2"	—
s705(E)	44	#6	36'-8"	—
s706(E)	264	#6	4'-10"	—
sp700	2	#6	89'-9"	—
t700(E)	50	#7	21'-4"	—
t701(E)	30	#11	33'-4"	—
t702(E)	15	#11	28'-4"	—
t703(E)	50	#7	10'-6"	—
u700(E)	20	#7	11'-8"	—
u701(E)	47	#6	5'-8"	—
u703(E)	18	#7	16'-4"	—
v700(E)	70	#11	49'-2"	—
v701	26	#14	36'-9"	—
v702	26	#14	42'-9"	—
v703	26	#14	60'-0"	—
v704	26	#14	54'-0"	—
Concrete Structures		Cu. Yd.	216.7	
Reinforcement Bars, Epoxy Coated		Pound	60,350	
Reinforcement Bars		Pound	49,110	
Drilled Shaft in Soil		Cu. Yd.	249.4	
Drilled Shaft in Rock		Cu. Yd.	4.9	
Concrete Sealer		Sq. Ft.	2,899	
Braced Excavation		Cu. Yd.	151.2	
Earth Excavation (Special)		Cu. Yd.	76.0	
Permanent Casing		Foot	178	
Crosshole Sonic Logging		Each	1	

** Length is height of spiral.



ELEVATION
(Looking North)

BARS A & B DIMENSIONS

Bar	A	B
s700(E)	2'-4"	4'-7"
s701(E)	2'-4"	5'-6"
s702(E)	2'-4"	7'-3"
s704(E)	3'-8"	7'-3"
t701(E)	24'-4"	4'-6"
t702(E)	24'-4"	2'-0"
u700(E)	3'-8"	4'-0"
u703(E)	8'-4"	4'-0"

BARS p700(E) & p701(E)



BAR p703(E)



BAR s703(E)



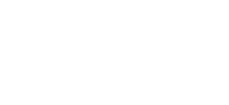
BAR s705(E)



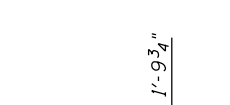
BAR s706(E)



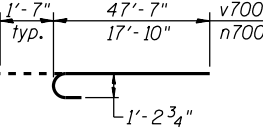
BAR t700(E)



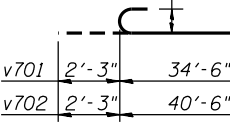
BAR t703(E)



BAR v700(E) BAR n700(E)



BARS v701 & v702



USER NAME = floresg	DESIGNED - RD	REVISED
PLOT SCALE = N.T.S.	CHECKED - ATB	REVISED
PLOT DATE = 5/7/2014	DRAWN - BM	REVISED
	CHECKED - RD	REVISED

STATE OF ILLINOIS
DEPARTMENT OF TRANSPORTATION

PIER 7 - PLAN AND ELEVATION
STRUCTURE NO. 016-1705

SHEET NO. S-130 OF S-165 SHEETS

F.A.I. RTE. 90/94/290	SECTION 2013-010R	COUNTY COOK	TOTAL SHEETS 747	SHEET NO. 446
CONTRACT NO. 60W28			ILLINOIS FED. AID PROJECT	

0161705-60W28-S130-Pier.dgn