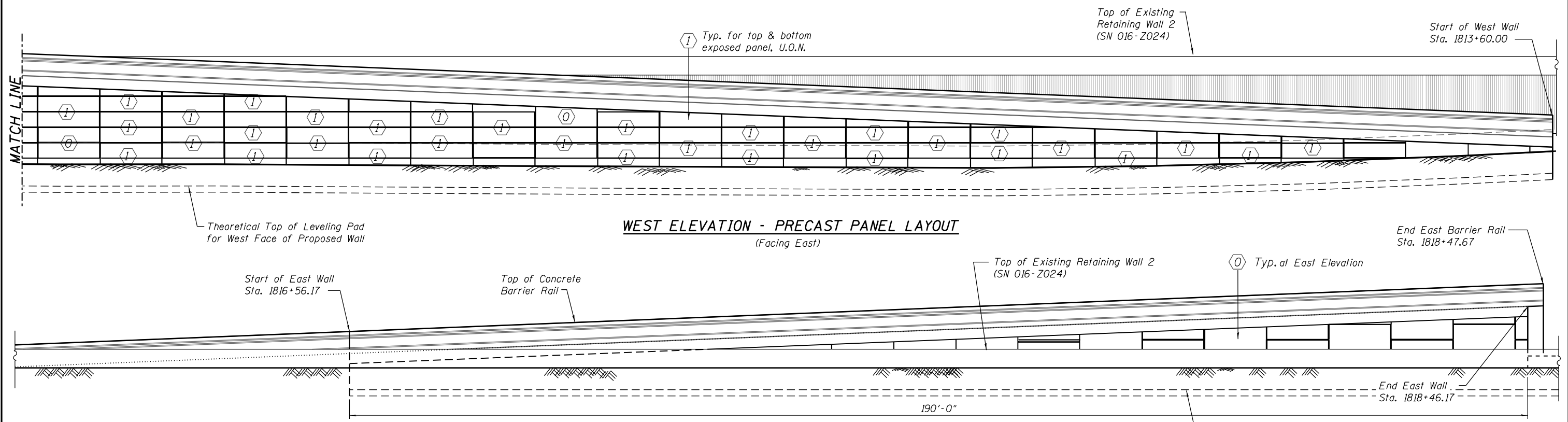
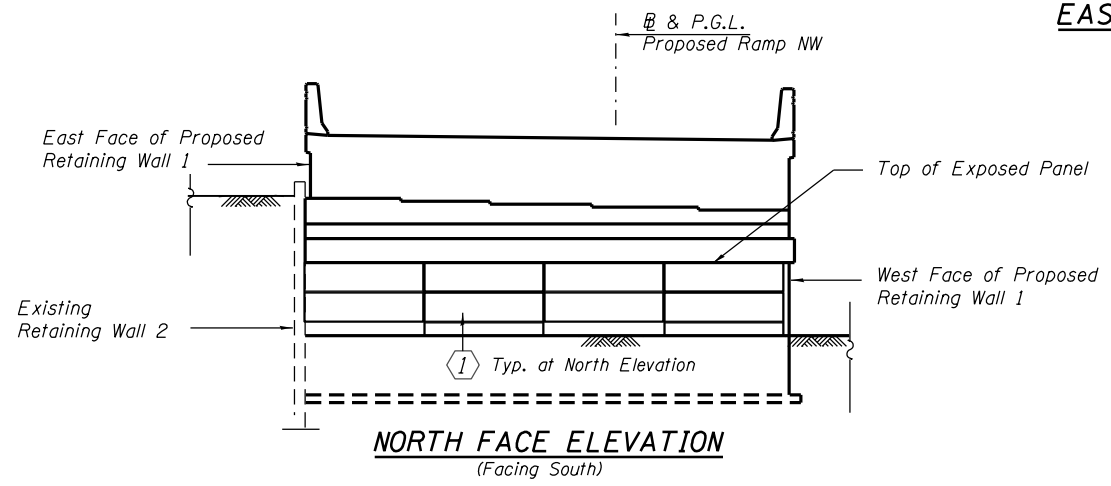


WEST ELEVATION - PRECAST PANEL LAYOUT
(Facing East)



WEST ELEVATION - PRECAST PANEL LAYOUT
(Facing East)

EAST ELEVATION
(Facing West)



NORTH FACE ELEVATION
(Facing South)

NOTES:

1. Reveals in concrete barrier will not be paid separately and will be included in the cost of the pay item "Concrete Superstructure"
2. Textured formliner for precast panels will not be paid separately and will be included in the cost of the pay item "Mechanically Stabilized Earth Retaining Wall, Special"
3. For formliner details for precast panels see sheet RW1-11.
4. Verify / coordinate all dimensions with bridge plans (SN 016-1705).
5. MSE Supplier to determine precast panel dimensions based on proprietary design. The suggested 10'-0" Nom. width shown here may change depending on supplier. If this is the case, it will be addressed by the engineer and coordinated with the supplier during the Shop Drawing submittal and review.

LEGEND:

① ② ②R ④ ⑤ ⑥ ⑧ Precast Panel Type Designation Based on Formliner Layout

0161720-60W28-510-SuperStruct



USER NAME = dunkerleyb	DESIGNED - MR	REVISED
PLOT SCALE = N.T.S.	CHECKED - ATB	REVISED
PLOT DATE = 4/28/2014	DRAWN - MR	REVISED
	CHECKED - EJO	REVISED

STATE OF ILLINOIS
DEPARTMENT OF TRANSPORTATION

ARCHITECTURAL DETAILS - I
STRUCTURE NO. 016-1720
SHEET NO. RW1-10 OF RW1-17 SHEETS

F.A.I. RTE. 90/94/290	SECTION 2013-010R	COUNTY COOK	TOTAL SHEETS 747	SHEET NO. 528
CONTRACT NO. 60W28			ILLINOIS FED. AID PROJECT NUMBER-	