

077

F A P	SECTION	COUNTY	TOTAL SHEETS	SHEET NO.
318	8RS-8,6RS-3,5RS-2,4RS-4	Peoria/Marshall	37	1
RTG 4, 29		ILLINOIS	CONTRACT NO. 68D68	

07-12-2019 LETTING ITEM 077

INDEX OF SHEETS

- 1 COVER SHEET
- 2 - 3 GENERAL NOTES, JOB SPECIFIC NOTES AND COMMITMENTS
- 4 - 7 SUMMARY OF QUANTITIES
- 8 - 13 TYPICAL SECTIONS
- 14 - 19 SCHEDULE OF QUANTITIES
- 20 LINE DIAGRAM
- 21 - 25 PAVEMENT MARKING DETAILS
- 26 - 27 STRUCTURE DETAILS
- 28 - 29 RUMBLE STRIP DETAILS
- 30 - 37 DISTRICT STANDARDS

STATE OF ILLINOIS
DEPARTMENT OF TRANSPORTATION

PROPOSED HIGHWAY PLANS

IL 29 ROUTE (FAP 318)
SECTION 8RS-8,6RS-3,5RS-2,4RS-4
PROJECT NHPP-STP-6EYQ(140)
TYPE OF IMPROVEMENT: RESURFACING
PEORIA AND MARSHALL COUNTIES

C-94-068-17

D-94-035-17



LOCATION OF SECTION INDICATED THIS: -

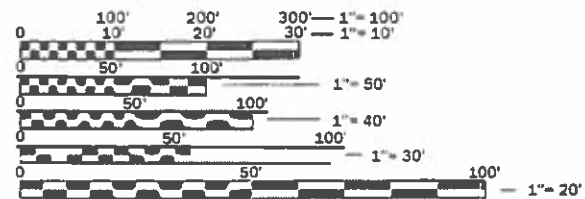
HIGHWAY STANDARD

- 630301-09 701306-04
- 667101-02 701311-03
- 701001-02 701316-12
- 701006-05 701901-08
- 701011-04 780001-05
- 701201-05 781001-04
- 701301-04 782006

CADD STANDARD

- 406101-D4
- 440001-D4
- 630301-D4
- 780001-D4

- ADT 9000/2017
- CRS 4% / 2019
- SU 4.11%
- MU 4.97%

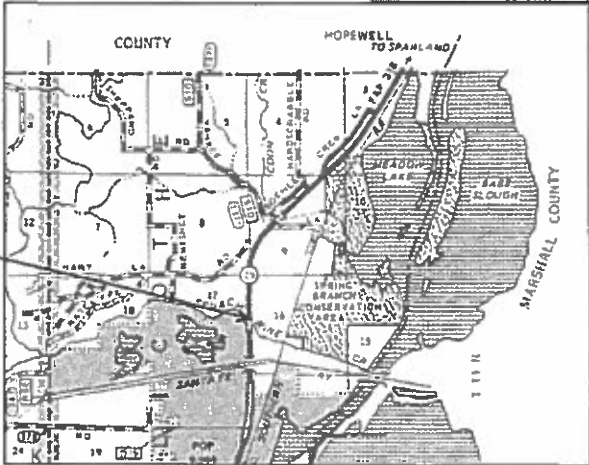
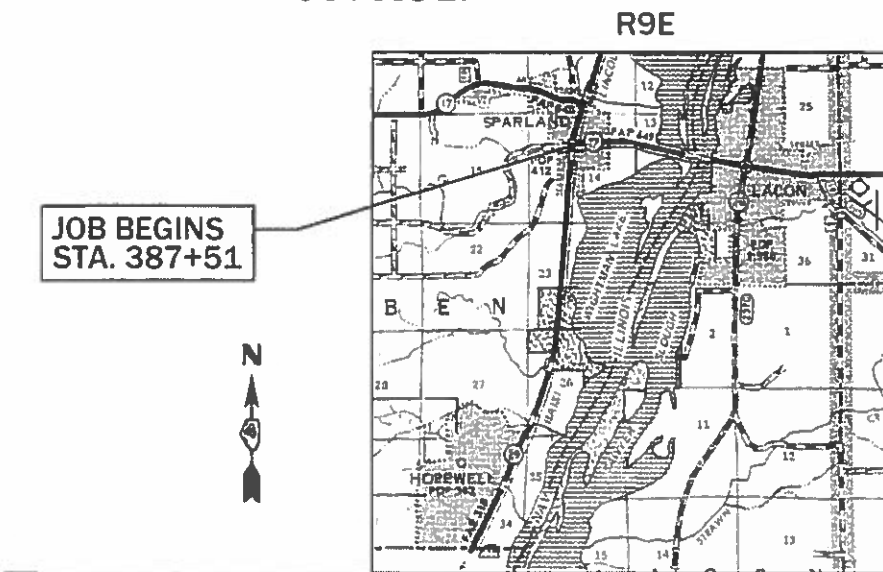


FULL SIZE PLANS HAVE BEEN PREPARED USING STANDARD ENGINEERING SCALES. REDUCED SIZED PLANS WILL NOT CONFORM TO STANDARD SCALES. IN MAKING MEASUREMENTS ON REDUCED PLANS, THE ABOVE SCALES MAY BE USED.

J.U.L.I.E.
JOINT UTILITY LOCATION INFORMATION FOR EXCAVATION
1-800-892-0123
OR 811

PROJECT ENGINEER: G. Elias 309-671-3467 M. Hudelson 309-671-3466
PROJECT MANAGER: Christopher Maushard 309-671-3453

CONTRACT NO. 68D68
CATALOG NO. 035491-00D



GROSS LENGTH = 36,524 FT. = 6.92 MILE
NET LENGTH = 36,404 FT. = 6.89 MILE

STATION EQUATIONS
STA 418+62.34 BK =
STA 1200+00.00 AH

STA 1422+51.60 BK =
STA 1422+54.30 AH

JOB DESCRIPTION
RESURFACING ON IL 29 FROM SENACHWINE CREEK N OF CHILLICOTHE TO S OF IL 17 IN SPARLAND.

STATE OF ILLINOIS
DEPARTMENT OF TRANSPORTATION
SUBMITTED May 31 2019
Kennel A Barnett REGION THREE ENGINEER
June 11 2019
Paul P. Chy ENGINEER OF DESIGN AND ENVIRONMENT
June 14 2019
DIRECTOR OF HIGHWAYS PROJECT IMPLEMENTATION

PRINTED BY THE AUTHORITY
OF THE STATE OF ILLINOIS

AVAILABILITY OF ELECTRONIC FILES

MicroStation and GEOPAK files of this project will be made available to the Contractor after contract award. If there is a conflict between the electronic files and the printed contract plans and documents, the printed contract plans and documents shall take precedence over the electronic files. The Contractor shall accept all risk associated with using the electronic files and shall hold the Department harmless for any errors or omissions in the electronic files and the data contained therein. Errors or delays resulting from the use of the electronic files by the Contractor shall not result in an extension of time for any interim or final completion date or shall not be considered cause for additional compensation. The Contractor shall not use, share, or distribute these electronic files except for the purpose of constructing this contract. Any claims by third parties due to use or errors shall be the responsibility of the Contractor. The Contractor shall include this disclaimer with the transfer of these electronic files to any other parties and shall include appropriate language binding them to similar responsibilities.

PROPERTY OWNER ACCESS REQUIREMENTS

Access must be maintained to all existing properties during construction per Article 107.09 unless arrangements are made in writing by the Contractor with the property owners with a copy to the Engineer for short-term closures.

CONSECUTIVE SIDE STREET (ROAD) CLOSURE – PROHIBITED

1. No two consecutive side streets (roads) may be closed at the same time during construction. The Contractor must alternate streets (roads).
2. Adjacent sideroads will not be closed simultaneously. BLR Standard 21 shall be used for all local road closures without any entrances within the closed area. BLR Standard 22 can be used where it is necessary to allow local traffic access.

BRIDGE OVERLAY NOTIFICATION

After placement of the bridge deck overlay, the Resident Engineer shall notify the District Bridge Maintenance Engineer of the "as constructed" milling depth and overlay thickness for updating the Illinois Highway Information System.

BUTT JOINT CUTTING TIME RESTRICTION

Butt joints shall not be milled more than three (3) days prior to placement of the HMA surface course.

PAVEMENT STATIONING NUMBERS & PLACEMENT

The Contractor shall provide labor and materials required to imprint pavement station numbers in the finished surface of the pavement and/or overlay. The numbers shall be approximately 3/4 inch (20 mm) wide, 5 inches (125 mm) high and 5/8 inch (15 mm) deep.

The pavement station numbers shall be installed as specified herein:

Interval – 200 feet (English stationing) or 100 meters (metric stationing)

Bottom of Numbers – 6 inches (150 mm) from the inside edge of the pavement marking

Location:

- 2, 3, & 5 Lane Pavements – right edge of pavement in direction of increasing stations
- Multi-Lane Divided Roadways – outside edge of pavement in both directions
- Ramps – along baseline edge of pavement

Position – stations shall be placed so they can be read from the adjacent shoulder

Format – English (Metric) pavement stations shall use this format "XXX (XX + X00)", where X represents the pavement station

This work will not be paid for separately, but will be included in the cost of the associated pavement and/or overlay pay items.

WINTER SHUTDOWN RESTRICTIONS ON COLD MILLED PROJECTS

Prior to winter shutdown the following steps shall be taken:

- All cold milled surfaces shall be overlaid.
- All lanes shall be reopened to traffic.
- Manholes, where applicable, shall be adjusted to the elevation of the binder course/leveling binder to ease in plowing snow, and re-adjusted to finished grade in the Spring. The initial manhole adjustment will be paid for at the contract unit price and any re-adjustment, as directed by the Engineer, will be paid for in accordance with Article 109.04.
- Temporary or permanent pavement marking shall be placed as applicable.

MODEL: Default
FILE: \\baron.com\data\links\gov\WIDOT\Documents\DOT_Offices\District_4\Projects\ID4_68D68\CADD\Drawings\Drawings\Full Plans.dgn

USER NAME = hudelsonme	DESIGNED -	REVISED -	STATE OF ILLINOIS DEPARTMENT OF TRANSPORTATION	GENERAL NOTES, JOB SPECIFIC NOTES & COMMITMENTS		F.A.P. RTE.	SECTION	COUNTY	TOTAL SHEETS	SHEET NO.
DRAWN -	REVISED -	318				8RS-6,6RS-3,5RS-2,4RS-4,3RS-5	Peoria/Marshall	37	2	
PLOT SCALE = 100,0000' / in.	CHECKED -	REVISED -		SCALE: SHEET OF SHEETS STA. TO STA.		CONTRACT NO. 68D68				
PLOT DATE = 5/31/2019	DATE -	REVISED -		ILLINOIS FED. AID PROJECT						

HOT-MIX ASPHALT MIXTURE REQUIREMENTS

Mixture Use(s):	Polymer Surface Course 1.75"	Binder Course 2"	Incidental Surface	Shoulders (Surface Lift)	Polymer Level Binder 1" for bridges
AC/PG:	SBS or SBR 76-28	PG 64-22	PG 64-22	PG 64-22	SBS or SBR 76-22
Design Air Voids:	4.0% @ N=50	4.0% @ N=50	4.0% @ N=50	4.0% @ N=50	4.0% @ N=50
Mixture Composition: (Mixture Gradation)	IL 9.5	IL 9.5	IL 9.5	IL 9.5FG	IL 4.75
Friction Aggregate:	Mix D	N.A.	Mix C	Mix C	N.A.
Quality Management Program:	PFP	PFP	QCQA	QCQA	QCQA

Note: 1) Individual lift thickness of each mix type will be no less than 3 times nominal maximum aggregate size and no more than 6 times nominal maximum aggregate size, unless otherwise approved by the Engineer.
 2) For design purposes, mixture weight for all mixes is determined to be 112.0 lb/s.y./in., unless otherwise noted.
 3) Sublot sizes for PFP and QCP mixes will be 1000 tons, unless otherwise agreed to by the Engineer and the paving contractor.

POLYMERIZED BITUMINOUS MATERIALS (TACK COAT) RATES

Surface Type	Residual Rate
Milled (HMA or PCC)	0.08 lb /sq ft
Existing Pavement	0.12 lb /sq ft
Fog Coat (between lifts)	0.08 lb /sq ft

PAVING SURFACE COURSE

Continuous paving operations on the main roadway shall be maintained at all times during the construction of the hot-mix asphalt surface. No interruptions for side roads, entrances, turn lanes, etc. will be allowed.

CROSSING EXISTING STRUCTURES WITH EQUIPMENT

The following structures: SN 062-0008, SN 062-0009, SN 062-0010, SN 072-0013, SN 072-0014, may be crossed with the empty MTD. Any structures not listed above shall be verified by the resident prior to beginning work.

JOB SPECIFIC NOTES -

PERMANENT SURVEY MARKERS

Permanent Survey Markers shall be dimpled and have the station stamped onto the face.

RUMBLE STRIP

Contact Operations Engineer Ben Tellefson (309-671-4477) for Rumble Strip location layout.

PAVEMENT MARKING REMOVAL - GRINDING

Pavement Marking Removal - Grinding will not be allowed on any new shoulder, binder course, leveling binder, or surface course.

COMMITMENTS

Commitments are not to be altered without the written approval of all parties to which the commitment was made.

NO COMMITMENTS WERE MADE.

MODEL: Default
 FILE: \\harsco.com\data\illinois\pwr\pww\DOT\Documents\DOT_Offices\Illinois\4\Projects\IDA_68D68\CADD\Task\CAD\Sheets\68D68_Full Plans.dgn

USER NAME = hudelsonme	DESIGNED -	REVISED -
	DRAWN -	REVISED -
PLOT SCALE = 100.0000' / in.	CHECKED -	REVISED -
PLOT DATE = 5/31/2019	DATE -	REVISED -

**STATE OF ILLINOIS
DEPARTMENT OF TRANSPORTATION**

**GENERAL NOTES, JOB SPECIFIC
NOTES & COMMITMENTS**

SCALE: SHEET OF SHEETS STA. TO STA.

F.A.P. RTE.	SECTION	COUNTY	TOTAL SHEETS	SHEET NO.
318	8RS-6,6RS-3,5RS-2,4RS-4,3RS-5	Peoria/Marshall	37	3
ILLINOIS FED. AID PROJECT			CONTRACT NO. 68D68	

CODE NO.	ITEM	UNIT	TOTAL QUANTITY	CONSTRUCTION CODE						
				NHPP 0005		NHPP 0005		STP 0005		
				MARSHALL CO RURAL		PEORIA CO RURAL		MARSHALL CO RURAL		
				80% FD	20% ST	80% FD	20% ST	80% FD	20% ST	
25000750	MOWING	ACRE	25.2	14.1		11.1				
40600295	POLYMERIZED BITUMINOUS MATERIALS (TACK COAT)	POUND	206652.9	111451.7		92749.6		2451.6		
40600827	POLYMERIZED LEVELING BINDER (MACHINE METHOD), IL-4.75, N50	TON	39	39						
40600982	HOT - MIX ASPHALT SURFACE REMOVAL - BUTT JOINT	SQ YD	4757	1592		3165				
40600990	TEMPORARY RAMP	SQ YD	983	324		659				
40602978	HOT-MIX ASPHALT BINDER COURSE, IL-9.5, N50	TON	14443	7361		152		6930		
40603535	POLYMERIZED HOT - MIX ASPHALT SURFACE COURSE, MIX "D", N50	TON	12670	6611		134		5925		
40800050	INCIDENTAL HOT - MIX ASPHALT SURFACING	TON	361	98		263				
44000152	HOT - MIX ASPHALT SURFACE REMOVAL, 3/4"	SQ YD	187	187						
44000157	HOT - MIX ASPHALT SURFACE REMOVAL, 2 "	SQ YD	123130	64282		58848				
48102100	AGGREGATE WEDGE SHOULDER, TYPE B	TON	1385	612		773				
48203100	HOT - MIX ASPHALT SHOULDERS	TON	2348	1983		365				
58100200	WATERPROOFING MEMBRANE SYSTEM	SQ YD	122	122						
60260100	INLETS TO BE ADJUSTED	EACH	1	1						

MODEL:\Dof\aut
 FILE NAME: P:\p\bar\comdes\illinois\p\DOT\Documents\DOT_Offices\District 4\Projects\04_68D68\CADData\CADsheets\0468D68_Full Plans.dgn

USER NAME = hudsonme	DESIGNED -	REVISED -
	DRAWN -	REVISED -
PLOT SCALE = 100.0000' / in.	CHECKED -	REVISED -
PLOT DATE = 6/3/2019	DATE -	REVISED -

**STATE OF ILLINOIS
DEPARTMENT OF TRANSPORTATION**

SUMMARY OF QUANTITIES

F.A.P. RTE.	SECTION	COUNTY	TOTAL SHEETS	SHEET NO.
318	8RS-8,6RS-3,5RS-2,4RS-4,3RS-5	Peoria/Marshall	37	4
ILLINOIS FED. AID PROJECT			CONTRACT NO. 68D68	

MODEL:\Def\ait
 FILE: \\p:\ar\comdes\illinois\p\1001\Documents\1001\Ofices\District 4\Projects\04-68068\CAD\Drawings\CAD\Drawings\0468068-Full Plans.dgn

CODE NO.	ITEM	UNIT	TOTAL QUANTITY	CONSTRUCTION CODE						
				MARSHALL CO		PEORIA CO		MARSHALL CO		
				RURAL		RURAL		RURAL		
				80% FD	20% ST	80% FD	20% ST	80% FD	20% ST	
* 63100167	TRAFFIC BARRIER TERMINAL, TYPE 1 (SPECIAL) TANGENT	EACH	25	19		6				
63200310	GUARDRAIL REMOVAL	FOOT	1250	950		300				
* 66700205	PERMANENT SURVEY MARKERS, TYPE I	EACH	46	26		20				
67000400	ENGINEER'S FIELD OFFICE, TYPE A	CAL MO	5	3		2				
67100100	MOBILIZATION	L SUM	1	0.6		0.4				
70100100	TRAFFIC CONTROL AND PROTECTION, STANDARD 701316	EACH	1	1						
70100450	TRAFFIC CONTROL AND PROTECTION, STANDARD 701201	L SUM	1	0.6		0.4				
70100460	TRAFFIC CONTROL AND PROTECTION, STANDARD 701306	L SUM	1	0.6		0.4				
70103815	TRAFFIC CONTROL SURVEILLANCE	CAL DA	10	10						
70106500	TEMPORARY BRIDGE TRAFFIC SIGNALS	EACH	1	1						
70107025	CHANGEABLE MESSAGE SIGN	CAL DA	20	20						
70300100	SHORT-TERM PAVEMENT MARKING	FOOT	15576	7700		7876				
70300150	SHORT TERM PAVEMENT MARKING REMOVAL	SQ FT	5531	2931		2600				
70300210	TEMPORARY PAVEMENT MARKING - LETTERS AND SYMBOLS	SQ FT	156	46.8		109.2				

*= SPECIALTY ITEM

USER NAME = hudsonme	DESIGNED -	REVISED -
	DRAWN -	REVISED -
PLOT SCALE = 100.0000' / in.	CHECKED -	REVISED -
PLOT DATE = 6/3/2019	DATE -	REVISED -

**STATE OF ILLINOIS
DEPARTMENT OF TRANSPORTATION**

SUMMARY OF QUANTITIES

F.A.P. RTE.	SECTION	COUNTY	TOTAL SHEETS	SHEET NO.
318	8RS-8,6RS-3,5RS-2,4RS-4,3RS-5	Peoria/Marshall	37	5
ILLINOIS FED. AID PROJECT			CONTRACT NO. 68D68	

MODEL:\Defaul...
 FILE NAME: P:\Illinois\Illinois\Documents\DOT - District 4\Projects\04-68068\CADData\CADsheets\0468068 Full Plans.dgn

CODE NO.	ITEM	UNIT	TOTAL QUANTITY	CONSTRUCTION CODE						
				MARSHALL CO		PEORIA CO		MARSHALL CO		
				RURAL		RURAL		RURAL		
				80% FD	20% ST	80% FD	20% ST	80% FD	20% ST	
70300220	TEMPORARY PAVEMENT MARKING - LINE 4"	FOOT	96891	53687		43204				
70300250	TEMPORARY PAVEMENT MARKING - LINE 8"	FOOT	1870	152		1718				
70300260	TEMPORARY PAVEMENT MARKING - LINE 12"	FOOT	1131	426		705				
70300280	TEMPORARY PAVEMENT MARKING - LINE 24"	FOOT	67			67				
70300904	PAVEMENT MARKING TAPE, TYPE IV 4"	FOOT	1010	1010						
70300924	PAVEMENT MARKING TAPE, TYPE IV 24"	FOOT	26	26						
* 72501000	TERMINAL MARKER - DIRECT APPLIED	EACH	25	19		6				
* 78009000	MODIFIED URETHANE PAVEMENT MARKING - LETTERS AND SYMBOLS	SQ FT	156	46.8		109.2				
* 78009004	MODIFIED URETHANE PAVEMENT MARKING - LINE 4"	FOOT	96891	53687		43204				
* 78009008	MODIFIED URETHANE PAVEMENT MARKING - LINE 8"	FOOT	1870	152		1718				
* 78009012	MODIFIED URETHANE PAVEMENT MARKING - LINE 12"	FOOT	1131	426		705				
* 78009024	MODIFIED URETHANE PAVEMENT MARKING - LINE 24"	FOOT	67			67				
* 78100100	RAISED REFLECTIVE PAVEMENT MARKER	EACH	628	316		312				
* 78200005	GUARDRAIL REFLECTORS, TYPE A	EACH	25	19		6				

*= SPECIALTY ITEM

USER NAME = hudelsonme	DESIGNED -	REVISED -
	DRAWN -	REVISED -
PLOT SCALE = 100.0000' / in.	CHECKED -	REVISED -
PLOT DATE = 6/3/2019	DATE -	REVISED -

**STATE OF ILLINOIS
DEPARTMENT OF TRANSPORTATION**

SUMMARY OF QUANTITIES

F.A.P. RTE.	SECTION	COUNTY	TOTAL SHEETS	SHEET NO.
318	BRS-8,BRS-3,5RS-2,4RS-4,3RS-5	Peoria/Marshall	37	6
CONTRACT NO. 68D68				
ILLINOIS FED. AID PROJECT				

MODEL:\dof\aut
 FILE NAME: P:\p\bar\comdes\illinois\p\DOT\Documents\DOT_Offices\District 4\Projects\04_68D68\CADData\C00sheets\0468D68_Full Plans.dgn

CODE NO.	ITEM	UNIT	TOTAL QUANTITY	CONSTRUCTION CODE						
				MARSHALL CO		PEORIA CO		MARSHALL CO		
				RURAL		RURAL		RURAL		
				80% FD	20% ST	80% FD	20% ST	80% FD	20% ST	
78300200	RAISED REFLECTIVE PAVEMENT MARKER REMOVAL	EACH	628	316		312				
X0327979	PAVEMENT MARKING REMOVAL - GRIND	SQ FT	306	306						
X4400196	HOT - MIX ASPHALT SURFACE REMOVAL, SPECIAL	SQ YD	2325	1232		1093				
X4401198	HOT-MIX ASPHALT SURFACE REMOVAL, VARIABLE DEPTH	SQ YD	24796	21309		3487				
XZ013798	CONSTRUCTION STATION LAYOUT	L SUM	1	0.6		0.4				
Z0001002	GUARDRAIL AGGREGATE EROSION CONTROL	TON	285	217		68				
Z0004556	HOT - MIX ASPHALT SURFACE REMOVAL (DECK)	SQ YD	122	122						
Z0016200	DECK SLAB REPAIR (PARTIAL)	SQ YD	13	13						
Z0034105	MATERIAL TRANSFER DEVICE	TON	27151	14011		286		12854		
Z0055400	RUMBLE STRIP	FOOT	32873	18416		14457				

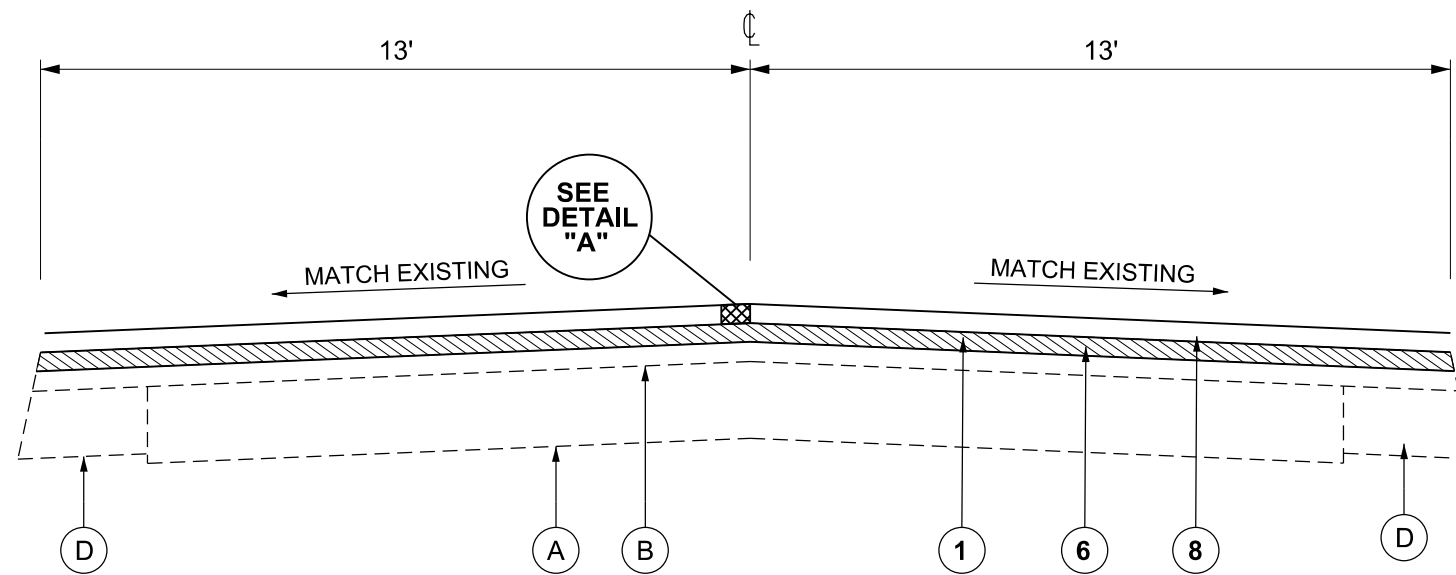
USER NAME = hudelsonme	DESIGNED -	REVISED -
	DRAWN -	REVISED -
PLOT SCALE = 100.0000' / in.	CHECKED -	REVISED -
PLOT DATE = 6/3/2019	DATE -	REVISED -

**STATE OF ILLINOIS
DEPARTMENT OF TRANSPORTATION**

SUMMARY OF QUANTITIES

F.A.P. RTE.	SECTION	COUNTY	TOTAL SHEETS	SHEET NO.
318	8RS-8,6RS-3,5RS-2,4RS-4,3RS-5	Peoria/Marshall	37	7
				CONTRACT NO. 68D68
ILLINOIS FED. AID PROJECT				

SEE
SHOULDER
TYPICAL SECTIONS



SEE
SHOULDER
TYPICAL SECTIONS

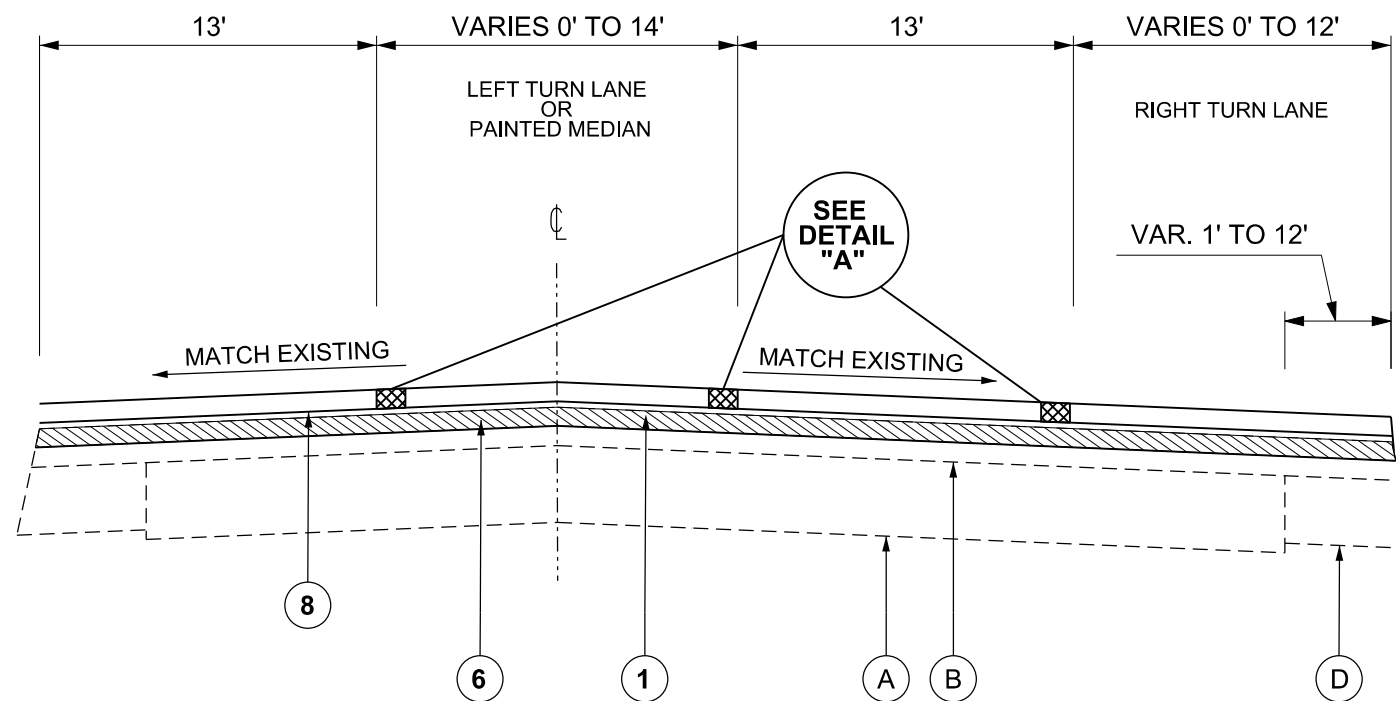
PROP. TYPICAL SECTION #1 (IL 29)

STA. 387+51 TO STA. 418+62.34 (BK)
 STA. 1200+00 (AH) TO STA. 1277+72
 STA. 1278+12 TO STA. 1304+29
 STA. 1313+81 TO STA. 1340+33
 STA. 1340+59 TO STA. 1422+51.60 (BK)
 STA. 1422+54.30 (AH) TO STA. 1474+30
 STA. 1475+50 TO STA. 1476+15
 STA. 1504+33 TO STA. 1534+08

LEGEND - EXISTING

- (A) PCC PAVEMENT 10"
- (B) HMA OVERLAY 5" +/-
- (C) HMA SHOULDER 8"
- (D) HMA BASE COURSE WIDENING 9"
- (E) GUTTER
- (F) REINFORCED CONCRETE BEAM WITH 7" DECK
- (G) 2-1/2" HMA OVERLAY AND WATERPROOFING
- (H) HMA OVERLAY AND WATERPROOFING
- (J) +/- 15" REINFORCED CONCRETE SLAB

SEE
SHOULDER
TYPICAL SECTIONS



SEE
SHOULDER
TYPICAL SECTIONS

PROP. TYPICAL SECTION #2 (IL 29)

STA. 1304+29 TO STA. 1313+81
 STA. 1476+15 TO STA. 1504+33

LEGEND - PROPOSED

- (1) HMA SURFACE REMOVAL, 2"
- (2) HMA SURFACE REMOVAL, 3/4"
- (3) HMA SURFACE REMOVAL, VAR. DEPTH
- (4) BRIDGE WEARING SURFACE REMOVAL
- (5) POLYMERIZED LEVELING BINDER (MACHINE METHOD), IL 4.75, N50, 1"
- (6) HMA BINDER COURSE IL-9.5, N50, 2"
- (7) POLY HMA SURFACE COURSE, MIX "D", N50, 1-1/2"
- (8) POLY HMA SURFACE COURSE, MIX "D", N50, 1-3/4"
- (9) HMA SHOULDERS 1-3/4"
- (10) AGGREGATE WEDGE SHOULDERS, TYPE B
- (11) DECK SLAB REPAIR (PARTIAL)

NOT TO SCALE

MODEL: Default
 FILE: \\nrcs\pub\pub\baronm.dwg
 PROJECT: \\nrcs\pub\pub\baronm.dwg
 OFFICE: \\nrcs\pub\pub\baronm.dwg

USER NAME = hudelsonme	DESIGNED -	REVISED -
	DRAWN -	REVISED -
PLOT SCALE = 100.0000' / in.	CHECKED -	REVISED -
PLOT DATE = 5/31/2019	DATE -	REVISED -

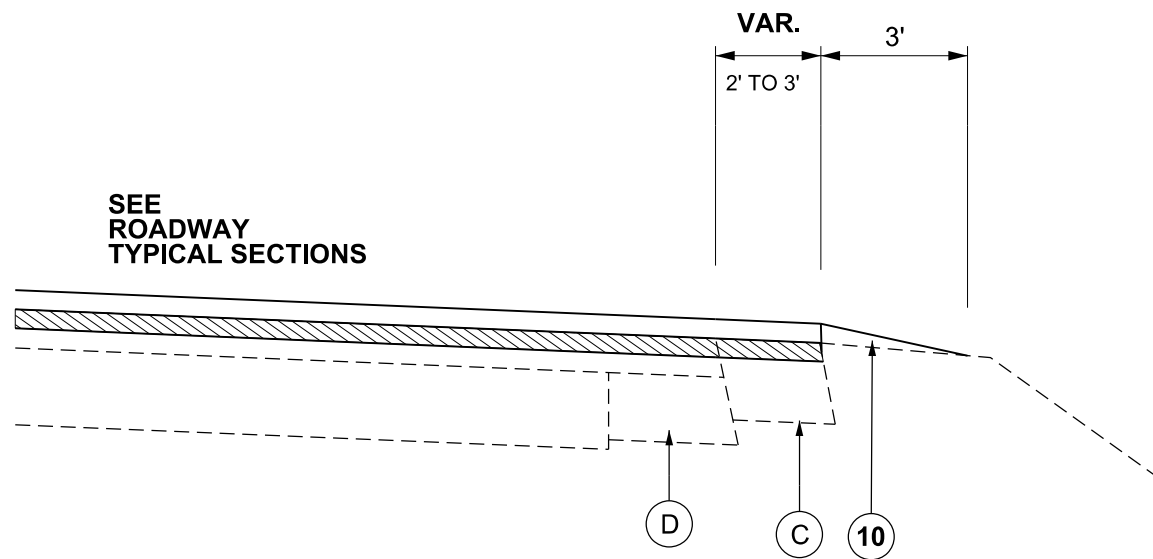
**STATE OF ILLINOIS
DEPARTMENT OF TRANSPORTATION**

TYPICAL SECTIONS

SCALE: SHEET OF SHEETS STA. TO STA.

F.A.P. RTE.	SECTION	COUNTY	TOTAL SHEETS	SHEET NO.
318	8RS-8,6RS-3,5RS-2,4RS-4,3RS-5	Peoria/Marshall	37	8
ILLINOIS FED. AID PROJECT			CONTRACT NO. 68D68	

SEE
ROADWAY
TYPICAL SECTIONS



PROP. TYPICAL SECTION #5 (IL 29)

RIGHT SHOULDER

STA. 387+51 TO STA. 414+15
 STA. 1272+00 TO STA. 1276+30
 STA. 1278+98 TO STA. 1285+73
 STA. 1398+72 TO STA. 1422+51.60 (BK)
 STA. 1422+54.30 (AH) TO STA. 1472+90
 STA. 1507+95 TO STA. 1532+83

LEFT SHOULDER (REVERSE TYPICAL)

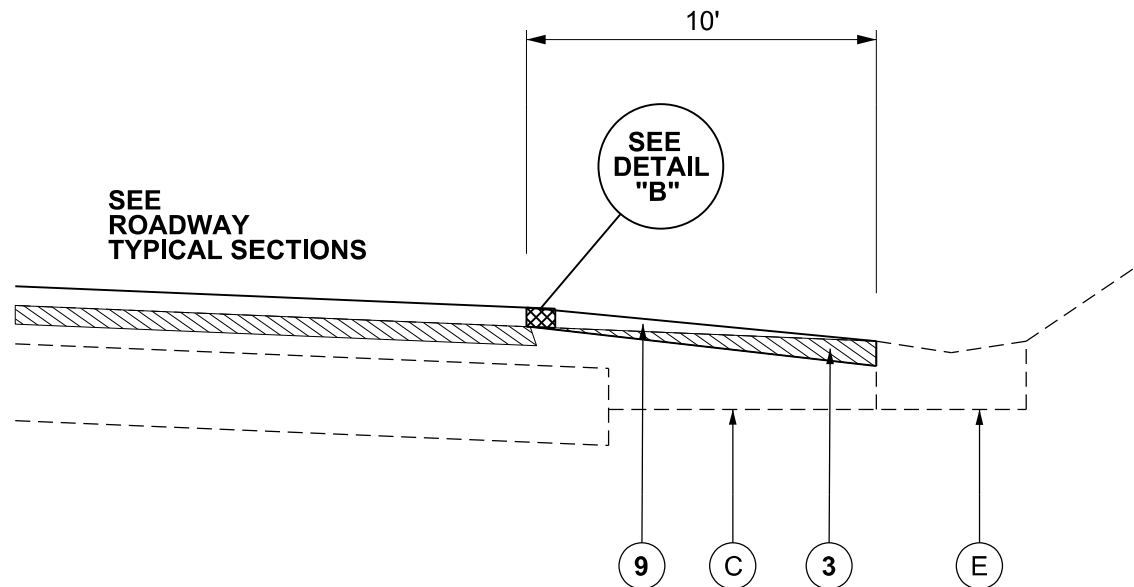
STA. 387+51 TO STA. 418+62.34 (BK)
 STA. 1200+00 (AH) TO STA. 1218+16
 STA. 1242+34 TO STA. 1276+71
 STA. 1278+82 TO STA. 1303+35
 STA. 1307+50 TO 1337+13
 STA. 1340+59 TO STA. 1422+51.60 (BK)
 STA. 1422+54.30 (AH) TO STA. 1534+08

SHOULDERS NOTE

SHOULDERS ≤ 4' SHALL BE CONSTRUCTED MONOLITHICALLY WITH MAINLINE PAVEMENT

 SHOULDERS > 4' SHALL BE CONSTRUCTED SEPARATELY USING SHOULDER MIX

SEE
ROADWAY
TYPICAL SECTIONS



PROP. TYPICAL SECTION #6 (IL 29)

RIGHT SHOULDER

STA. 1204+75 TO STA. 1266+40
 STA. 1285+73 TO STA. 1392+55
 STA. 1504+30 TO STA. 1507+95

LEGEND - EXISTING

- (A) PCC PAVEMENT 10"
- (B) HMA OVERLAY 5" +/-
- (C) HMA SHOULDER 8"
- (D) HMA BASE COURSE WIDENING 9"
- (E) GUTTER
- (F) REINFORCED CONCRETE BEAM WITH 7" DECK
- (G) 2-1/2" HMA OVERLAY AND WATERPROOFING
- (H) HMA OVERLAY AND WATERPROOFING
- (J) +/- 15" REINFORCED CONCRETE SLAB

LEGEND - PROPOSED

- (1) HMA SURFACE REMOVAL, 2"
- (2) HMA SURFACE REMOVAL, 3/4"
- (3) HMA SURFACE REMOVAL, VAR. DEPTH
- (4) BRIDGE WEARING SURFACE REMOVAL
- (5) POLYMERIZED LEVELING BINDER (MACHINE METHOD), IL 4.75, N50, 1"
- (6) HMA BINDER COURSE IL-9.5, N50, 2"
- (7) POLY HMA SURFACE COURSE, MIX "D", N50, 1-1/2"
- (8) POLY HMA SURFACE COURSE, MIX "D", N50, 1-3/4"
- (9) HMA SHOULDERS 1-3/4"
- (10) AGGREGATE WEDGE SHOULDERS, TYPE B
- (11) DECK SLAB REPAIR (PARTIAL)

NOT TO SCALE

MODEL: Default
 FILE: \\blm01c-prod\planroom\dat\illinois.gov\PROJECTS\DOT\Documents\DOT_Offices\District 4\Projects\144_68D68\CADD\Task\CAD\Sheet\14468D68_Full_Plan.dgn

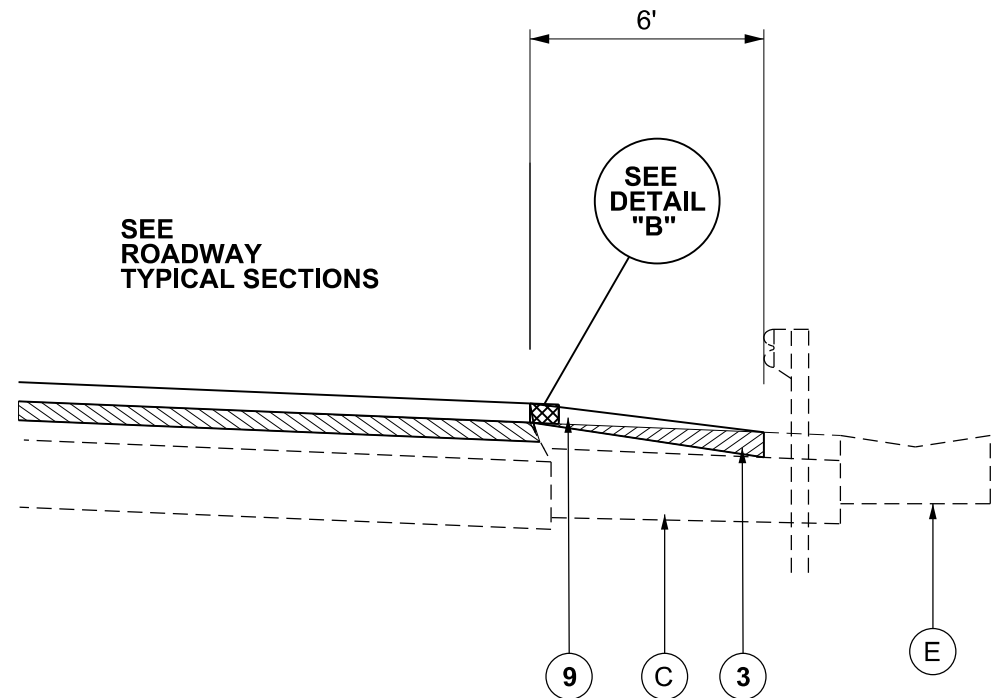
USER NAME = hudelsonme	DESIGNED -	REVISED -
	DRAWN -	REVISED -
PLOT SCALE = 100,0000' / in.	CHECKED -	REVISED -
PLOT DATE = 5/31/2019	DATE -	REVISED -

STATE OF ILLINOIS
 DEPARTMENT OF TRANSPORTATION

TYPICAL SECTIONS

SCALE: SHEET OF SHEETS STA. TO STA.

F.A.P. RTE.	SECTION	COUNTY	TOTAL SHEETS	SHEET NO.
318	8RS-8,6RS-3,5RS-2,4RS-4,3RS-5	Peoria/Marshall	37	10
ILLINOIS FED. AID PROJECT			CONTRACT NO. 68D68	



PROP. TYPICAL SECTION #7 (IL 29)

**LEFT SHOULDER (REVERSE TYPICAL)
STA. 1218+16 TO STA. 1242+34**

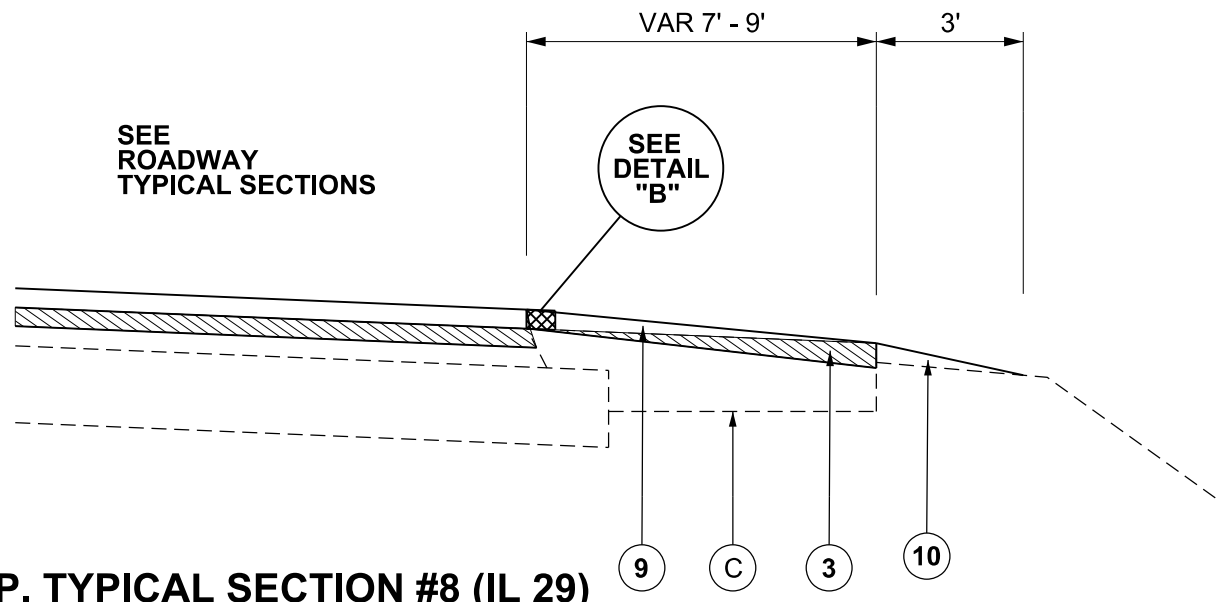
SHOULDERS NOTE

SHOULDERS ≤ 4' SHALL BE CONSTRUCTED MONOLITHICALLY WITH MAINLINE PAVEMENT

SHOULDERS > 4' SHALL BE CONSTRUCTED SEPARATELY USING SHOULDER MIX

LEGEND - EXISTING

- (A) PCC PAVEMENT 10"
- (B) HMA OVERLAY 5" +/-
- (C) HMA SHOULDER 8"
- (D) HMA BASE COURSE WIDENING 9"
- (E) GUTTER
- (F) REINFORCED CONCRETE BEAM WITH 7" DECK
- (G) 2-1/2" HMA OVERLAY AND WATERPROOFING
- (H) HMA OVERLAY AND WATERPROOFING
- (J) +/- 15" REINFORCED CONCRETE SLAB



PROP. TYPICAL SECTION #8 (IL 29)

RIGHT SHOULDER
 STA. 414+15 TO STA. 418+62.34 (BK)
 STA. 1200+00 (AH) TO STA. 1204+75
 STA. 1266+40 TO STA. 1272+00
 STA. 1276+30 TO STA. 1278+98
 STA. 1392+55 TO STA. 1398+72
 STA. 1472+90 TO STA. 1476+75
 STA. 1532+83 TO STA. 1534+08

LEFT SHOULDER (REVERSE TYPICAL)
 STA. 1276+71 TO STA. 1278+82
 STA. 1303+35 TO STA. 1307+50
 STA. 1337+13 TO STA. 1340+33

LEGEND - PROPOSED

- (1) HMA SURFACE REMOVAL, 2"
- (2) HMA SURFACE REMOVAL, 3/4"
- (3) HMA SURFACE REMOVAL, VAR. DEPTH
- (4) BRIDGE WEARING SURFACE REMOVAL
- (5) POLYMERIZED LEVELING BINDER (MACHINE METHOD), IL 4.75, N50, 1"
- (6) HMA BINDER COURSE IL-9.5, N50, 2"
- (7) POLY HMA SURFACE COURSE, MIX "D", N50, 1-1/2"
- (8) POLY HMA SURFACE COURSE, MIX "D", N50, 1-3/4"
- (9) HMA SHOULDERS 1-3/4"
- (10) AGGREGATE WEDGE SHOULDERS, TYPE B
- (11) DECK SLAB REPAIR (PARTIAL)

NOT TO SCALE

MODEL: Default
 FILE: \\maric.pva\pub\arcom\ada\illinois.gov\PHUDOT\Documents\DOT_Offices\District_4\Projects\IDA_68D68\CADD\Task\CAD\Sheets\1468D68_Full_Plans.dgn

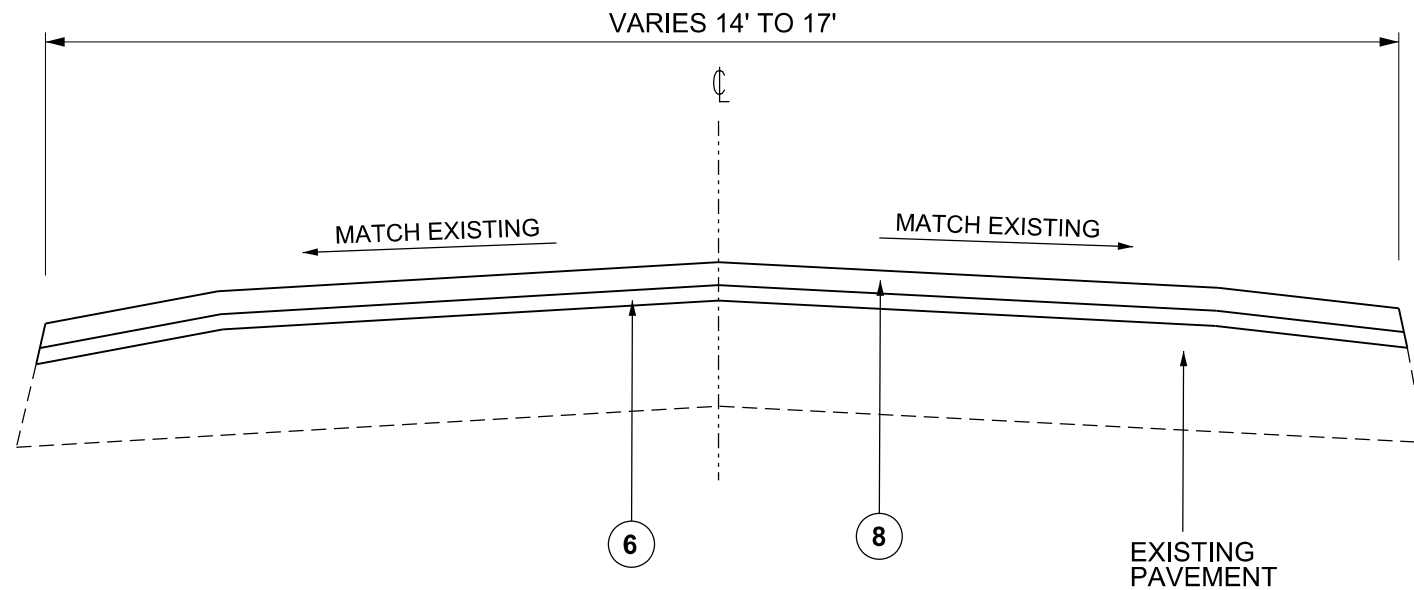
USER NAME = hudelsonme	DESIGNED -	REVISED -
PLOT SCALE = 100.0000' / in.	DRAWN -	REVISED -
PLOT DATE = 5/31/2019	CHECKED -	REVISED -
	DATE -	REVISED -

**STATE OF ILLINOIS
DEPARTMENT OF TRANSPORTATION**

TYPICAL SECTIONS

SCALE: SHEET OF SHEETS STA. TO STA.

F.A.P. RTE.	SECTION	COUNTY	TOTAL SHEETS	SHEET NO.
318	8RS-8,6RS-3,5RS-2,4RS-4,3RS-5	Peoria/Marshall	37	11
CONTRACT NO. 68D68				
ILLINOIS FED. AID PROJECT				



PROP. TYPICAL SECTION #9 (RAILROAD ST.)

STA. 0+00 TO STA. 6+81

NOTE - RAILROAD ST.

NO MILLING: EXISTING HMA SURFACE TO REMAIN IN PLACE

TACK COAT SHALL BE APPLIED DIRECTLY TO EXISTING SURFACE ACCORDING TO ARTICLE 406.05, BUT AT A RATE THAT WILL PROVIDE A RESIDUAL ASPHALT RATE OF 0.12 LB/SQ FT

USE OF MATERIAL TRANSFER DEVICE AT THE DISCRETION OF THE ENGINEER

LEGEND - EXISTING

- (A) PCC PAVEMENT 10"
- (B) HMA OVERLAY 5" +/-
- (C) HMA SHOULDER 8"
- (D) HMA BASE COURSE WIDENING 9"
- (E) GUTTER
- (F) REINFORCED CONCRETE BEAM WITH 7" DECK
- (G) 2-1/2" HMA OVERLAY AND WATERPROOFING
- (H) HMA OVERLAY AND WATERPROOFING
- (J) +/- 15" REINFORCED CONCRETE SLAB

LEGEND - PROPOSED

- (1) HMA SURFACE REMOVAL, 2"
- (2) HMA SURFACE REMOVAL, 3/4"
- (3) HMA SURFACE REMOVAL, VAR. DEPTH
- (4) BRIDGE WEARING SURFACE REMOVAL
- (5) POLYMERIZED LEVELING BINDER (MACHINE METHOD), IL 4.75, N50, 1"
- (6) HMA BINDER COURSE IL-9.5, N50, 2"
- (7) POLY HMA SURFACE COURSE, MIX "D", N50, 1-1/2"
- (8) POLY HMA SURFACE COURSE, MIX "D", N50, 1-3/4"
- (9) HMA SHOULDERS 1-3/4"
- (10) AGGREGATE WEDGE SHOULDERS, TYPE B
- (11) DECK SLAB REPAIR (PARTIAL)

NOT TO SCALE

MODEL: Default
 FILE: h:\mhc\p\pub\haronom.dwg
 PROJECT: ILLINOIS STATE HIGHWAY DEPARTMENT
 OFFICE: DISTRICT 4
 SHEET: 318
 DATE: 5/31/2019

USER NAME = hudelsonme	DESIGNED -	REVISED -
	DRAWN -	REVISED -
PLOT SCALE = 100.0000' / in.	CHECKED -	REVISED -
PLOT DATE = 5/31/2019	DATE -	REVISED -

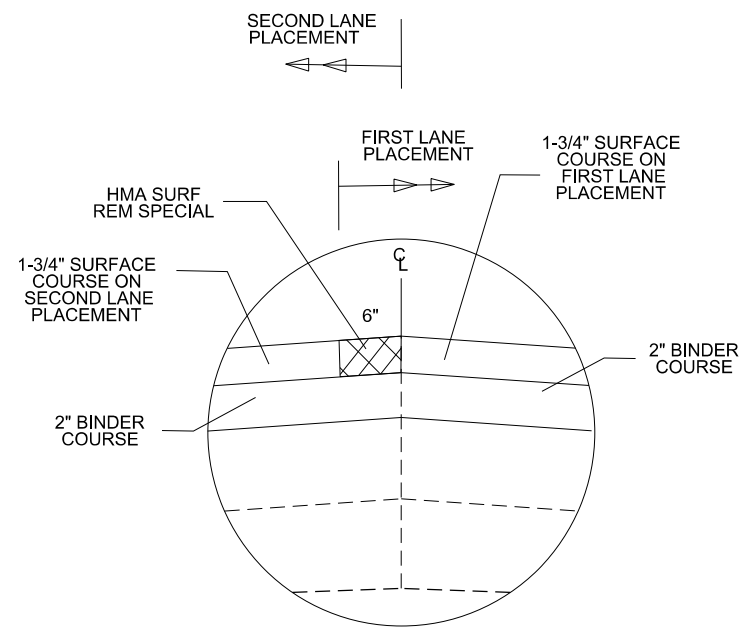
**STATE OF ILLINOIS
DEPARTMENT OF TRANSPORTATION**

TYPICAL SECTIONS

SCALE: SHEET OF SHEETS STA. TO STA.

F.A.P. RTE.	SECTION	COUNTY	TOTAL SHEETS	SHEET NO.
318	8RS-8,6RS-3,5RS-2,4RS-4,3RS-5	Peoria/Marshall	37	12
CONTRACT NO. 68D68				
ILLINOIS FED. AID PROJECT				

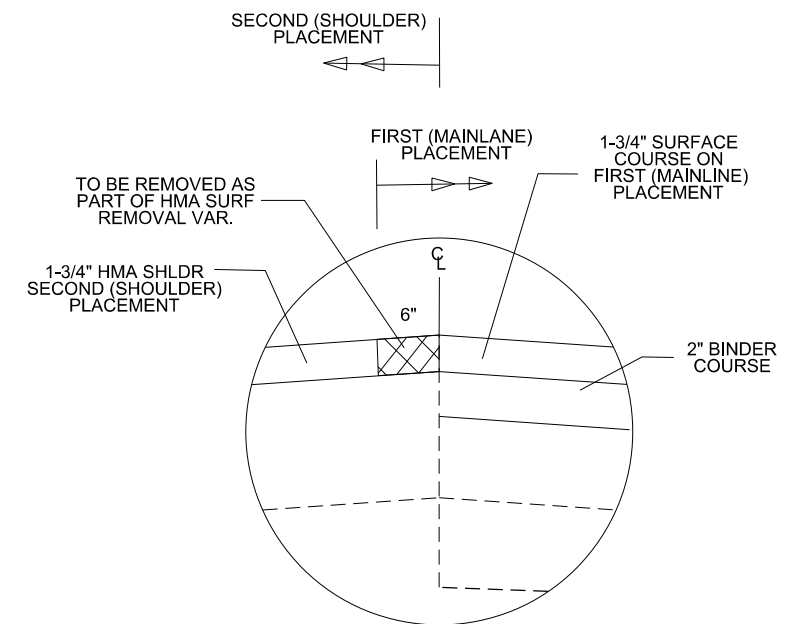
DETAIL "A" - CENTERLINE & TURN LANES



SHOWING HMA SURFACE REMOVAL NEAR CENTERLINE

SEE SPECIAL PROVISION FOR CONSTRUCTION SEQUENCE FOR MILLING AND PAVING

DETAIL "B" - EOP (ONLY WHERE SHOULDERS > 4')



SHOWING HMA SURFACE REMOVAL AT EDGE OF PAVEMENT (TYPICAL)
SHOWING FOR LT EOP, REVERSE FOR RT EOP

SEE SPECIAL PROVISION FOR CONSTRUCTION SEQUENCE FOR MILLING AND PAVING

NOT TO SCALE

MODEL: Default
FILE: \\marlin-pc\pub\lanroom\data\illinois.gov\PI\DOT\Documents\DOT_Offices\District_4\Projects\ID4_68D68\CADD\Drawings\CAD\Drawings\68D68_Full Plans.dgn

USER NAME = hudelsonme	DESIGNED -	REVISED -
	DRAWN -	REVISED -
PLOT SCALE = 100,0000' / in.	CHECKED -	REVISED -
PLOT DATE = 5/31/2019	DATE -	REVISED -

STATE OF ILLINOIS
DEPARTMENT OF TRANSPORTATION

TYPICAL SECTIONS

SCALE: SHEET OF SHEETS STA. TO STA.

F.A.P. RTE.	SECTION	COUNTY	TOTAL SHEETS	SHEET NO.
318	8RS-6,6RS-3,5RS-2,4RS-4,3RS-5	Peoria/Marshall	37	13
CONTRACT NO. 68D68			ILLINOIS FED. AID PROJECT	

TABULATION OF RESURFACING QUANTITIES (ROADWAY)																					
LOCATION	WIDTH	LENGTH	AREA	NOTE	HMA SURF REM	TEMP RAMP	HMA SURF REM	HMA SURF REM	HMA SURF REM	HMA SURF REM	POLY BIT	INCIDENT	POLY LVL BNR	HMA BINDER	POLY HMA	POLY HMA	HMA	AGG WEDGE	MATERIAL		
					BUTT JOINT	SQ YD	(SPECIAL)	3/4"	2"	VAR DEPTH	(TK CT)	HMA SURF	(MACH METH)	CSE MIX "D"	SURF CSE	SURF CSE	SHLDRS	SHLDRS	TRANSFER		
MARSHALL COUNTY - RURAL																					
387+51	TO	387+91	48	40.0	213.3		213.3	35.6	0.0	0.0	0.0	0.0	307.3	0.0	0.0	23.9	0.0	20.9	0.0	44.8	
387+91	TO	389+91	VARIES	200.0	891.7		0	0	0.0	0.0	891.7	0.0	1,284.0	0.0	0.0	99.9	0.0	87.4	0.0	187.3	
389+91	TO	418+62.34	26	2,871.3	8,295.0		0	0	0.0	0.0	8,295.0	0.0	11,944.8	0.0	0.0	929.0	0.0	812.9	0.0	1,741.9	
STA EQ 418+62.34 BK = 1200+00.00 AH																					
1200+00	TO	1277+72	26	7,772.0	22,452.4		0	0	0.0	0.0	22,452.4	0.0	32,331.5	0.0	0.0	2,514.7	0.0	2,200.3	0.0	4,715.0	
1277+72	TO	1278+12	42	40.0	186.7	062-0008	0	0	0.0	186.7	0.0	0.0	268.8	0.0	20.9	0.0	15.7	0.0	0.0	36.6	
1278+12	TO	1304+29	26	2,617.0	7,560.2		0	0	0.0	0.0	7,560.2	0.0	10,886.7	0.0	0.0	846.7	0.0	740.9	0.0	1,587.6	
1304+29	TO	1313+81	VARIES	952.0	3,565.0	HOPEWELL	0	0	0.0	0.0	3,565.0	0.0	5,133.6	0.0	0.0	399.3	0.0	349.4	0.0	748.7	
1313+81	TO	1339+93	26	2,612.0	7,545.8		0	0	0.0	0.0	7,545.8	0.0	10,866.0	0.0	0.0	845.1	0.0	739.5	0.0	1,584.6	
1339+93	TO	1340+33	26	40.0	115.6		115.6	19.3	0.0	0.0	0.0	0.0	166.5	0.0	0.0	12.9	0.0	11.3	0.0	24.2	
1340+33	TO	1340+59	44	26.0	127.1	062-0010	0	0	0.0	BRIDGE WEARING SURF REM		183.0	0.0	18.1	0.0	10.7	12.5	0.0	0.0	41.3	
1340+59	TO	1340+99	26	40.0	115.6		115.6	19.3	0.0	0.0	0.0	0.0	166.5	0.0	0.0	12.9	0.0	11.3	0.0	24.2	
1340+99	TO	1373+42	26	3,243.0	9,368.7		0	0	0.0	0.0	9,368.7	0.0	13,490.9	0.0	0.0	1,049.3	0.0	918.1	0.0	1,967.4	
SHOULDERS					(SEE SHOULDER TABLE)		151.1	0	0.0	0.0	4,602.8	20,201.5	21,281.9	0.0	0.0	515.5	0.0	451.1	1,979.7	612.1	966.6
MILL WIDE PAVE WIDE (CL TL)		0.5	22,180.3	1,232.2			0	0	1,232.2	0.0	0.0	0.0	887.2	0.0	0.0	0.0	0.0	120.8	0.0	0.0	120.8
MILL WIDE PAVE WIDE (EOP)		0.5	19,942.3	1,107.9			0	0	0.0	0.0	0.0	1,107.9	797.7	0.0	0.0	0.0	0.0	108.6	0.0	0.0	108.6
DRIVEWAYS		VARIES	VARIES	28.9			0	0	0.0	0.0	0.0	0.0	20.8	0.0	0.0	0.0	0.0	0.0	0.0	0.0	0.0
SIDE ROADS		VARIES	VARIES	996.2			996.2	250.0	0.0	0.0	0.0	0.0	1,434.5	97.6	0.0	111.6	0.0	0.0	0.0	0.0	111.6
MARSHALL COUNTY - RURAL SUBTOTALS							1592	324	1232	187	64282	21309	111451.7	98	39	7361	6611	1983	612	14011	
RAILROAD STREET - (SPARLAND)																					
RAILROAD STREET		VARIES	681.0	1,362.0			0	0	0.0	0.0	0.0	0.0	2,451.6	0.0	0.0	152.4	0.0	133.5	0.0	0.0	285.9
RAILROAD STREET SUBTOTALS							0	0	0	0	0	0	2451.6	0	0	152	134	0	0	286	
PEORIA COUNTY - RURAL																					
1373+42	TO	1422+51.60	26	4909.6	14183.3		0	0	0	0	14183.3	0	20424	0	0	1588.5	0	1,390.0	0	0	2,978.5
STA EQ 1422+51.60 BK = 1422+54.34 AH																					
1422+54.34	TO	1474+30	26	5175.66	14951.9		0	0	0	0	14951.9	0	21530.7	0	0	1674.6	0	1,465.3	0	0	3,139.9
1473+90	TO	1474+30	26	40	115.6		115.6	19.3	0	0	0	0	166.5	0	0	12.9	0	11.3	0	0	24.2
1474+30	TO	1475+50	OMISSION			072-0013	0	0	0	0	0	0	0	0	0	0	0	0	0	0	0
1475+50	TO	1475+90	26	40	115.6		115.6	19.3	0	0	0	0	166.5	0	0	12.9	0	11.3	0	0	24.2
1475+90	TO	1476+15	26	25	72.2		0	0	0	0	72.2	0	104	0	0	8.1	0	7.1	0	0	15.2
1476+15	TO	1486+31	VARIES	1016	5313.4	YANKEE LN	0	0	0	0	5313.4	0	7651.3	0	0	595.1	0	520.7	0	0	1,115.8
1486+31	TO	1504+33	VARIES	1802	8039.3	HART LN	0	0	0	0	8039.3	0	11576.6	0	0	900.4	0	787.9	0	0	1,688.3
1504+33	TO	1533+68	26	2935	8478.9		0	0	0	0	8478.9	0	12209.6	0	0	949.6	0	830.9	0	0	1,780.5
1533+68	TO	1534+08	26	40	115.6		115.6	19.3	0	0	0	0	166.5	0	0	12.9	0	11.3	0	0	24.2
SHOULDERS					(SEE SHOULDER TABLE)		137.9	0	0.0	0.0	6,953.4	3,319.7	12,502.4	0	0	778.8	0	681.4	325.3	773.4	1,460.2
MILL WIDE PAVE WIDE (CL TL)		0.5	19673.26	1093			0	0	1,093.0	0.0	0.0	0.0	787.0	0.0	0.0	0.0	0.0	107.1	0.0	0.0	107.1
MILL WIDE PAVE WIDE (EOP)		0.5	3015	167.5			0	0	0.0	0.0	0.0	167.5	120.6	0.0	0.0	0.0	0.0	16.4	0.0	0.0	16.4
DRIVEWAYS		VARIES	VARIES	350.6			0	0	0	0	0	0	252.4	0	0	0.0	0	0.0	39.3	0	0
HARDSCRABBLE RD TURN LN		VARIES	VARIES	421.7			0	0	0	0	421.7	0	607.2	0	0	47.2	0	41.3	0	0	88.5
RIVERSIDE MTLs EXTRA LNS		VARIES	VARIES	434.1			0	0	0	0	434.1	0	625.1	0	0	48.6	0	42.5	0	0	91.1
SIDE ROADS		VARIES	VARIES	2,680.0			2,680.0	601.4	0	0	0	0	3,859.2	262.6	0	300.2	0	0.0	0	0	300.2
PEORIA COUNTY - RURAL SUBTOTALS							3165	659	1093	0	58848	3487	92749.6	263	0	6930	5925	365	773	12854	
TOTALS							4757	983	2325	187	123130	24796	206652.9	361	39	14443	12670	2348	1385	27151	

**STATE OF ILLINOIS
DEPARTMENT OF TRANSPORTATION**

SCHEDULE OF QUANTITIES

USER NAME = hudelsonme	DESIGNED -	REVISED -
	DRAWN -	REVISED -
PLOT SCALE = 100,0000 ' / in.	CHECKED -	REVISED -
PLOT DATE = 6/3/2019	DATE -	REVISED -

SCALE:	SHEET	OF	SHEETS	STA.	TO	STA.
--------	-------	----	--------	------	----	------

F.A.P. RTE.	SECTION	COUNTY	TOTAL SHEETS	SHEET NO.
318	BRS-6,BRS-3,5RS-2,4RS-4,3RS-5	Peoria/Marshall	37	14
CONTRACT NO. 68D68				
ILLINOIS		FED. AID PROJECT		

MODEL: Default
 FILE: h:\work\pub\planroom\dat\illnks\gov\PWIDOT\Documents\DOT Office\Drawings\Projects\318\318\Drawings\68D68 - Full Plans.dwg

TABULATION OF RESURFACING QUANTITIES (SHOULDERS) (1 OF 2)															
LOCATION			SIDE	WIDTH	LENGTH	AREA	HMA	HMA	HMA	POLY BIT	HMA BINDER	POLY HMA	HMA	AGG WEDGE	MATERIAL
							SURF REM	SURF REM	SURF REM	MATLS	CSE MIX "D"	SURF CSE	SHLDRS	SHLDRS	TRANSFER
						BUTT JOINT	2"	VAR DEPTH	(TK CT)	N50 2"	N50 1 3/4"	1-3/4"	TYPE B	DEVICE	
			FT	FT	SQ YD	SQ YD	SQ YD	SQ YD	POUND	TON	TON	TON	TON	TON	
MARSHALL COUNTY - RURAL															
387+51	TO	387+91	RT	2	40	8.9	8.9	0.0	0.0	6.4	0.0	0.0	0.0	1.0	0.0
387+91	TO	414+15	RT	2	2624	583.1	0.0	583.1	0.0	839.7	65.3	57.1	0.0	68.6	122.5
414+15	TO	418+62.34	RT	7	447.34	347.9	0.0	0.0	347.9	250.5	0.0	0.0	34.1	11.7	0.0
STA EQ 418+62.34 BK = 1200+00.00 AH															
1200+00.00	TO	1204+75	RT	7	475	369.4	0.0	0.0	369.4	266.0	0.0	0.0	36.2	12.4	0.0
1204+75	TO	1266+40	RT	10	6165	6850.0	0.0	0.0	6,850.0	4,932.0	0.0	0.0	671.3	0.0	0.0
1266+40	TO	1272+00	RT	7	560	435.6	0.0	0.0	435.6	313.6	0.0	0.0	42.7	14.6	0.0
1272+00	TO	1276+30	RT	2	430	95.6	0.0	95.6	0.0	137.7	10.7	9.4	0.0	11.2	20.1
1276+30	TO	1277+72	RT	9	142	142.0	0.0	0.0	142.0	102.2	0.0	0.0	13.9	3.7	0.0
SN 062-0008															
1278+12	TO	1278+98	RT	8	86	76.4	0.0	0.0	76.4	55.0	0.0	0.0	7.5	2.2	0.0
1278+98	TO	1285+73	RT	2	675	150.0	0.0	150.0	0.0	216.0	16.8	14.7	0.0	17.6	31.5
1285+73	TO	1339+93	RT	10	5420	6022.2	0.0	0.0	6,022.2	4,336.0	0.0	0.0	590.2	0.0	0.0
1339+93	TO	1340+33	RT	10	40	44.4	44.4	0.0	0.0	32.0	0.0	0.0	0.0	0.0	0.0
SN 062-0010															
1340+59	TO	1340+99	RT	10	40	44.4	44.4	0.0	0.0	32.0	0.0	0.0	0.0	0.0	0.0
1340+99	TO	1373+42	RT	10	3243	3603.3	0.0	0.0	3,603.3	2,594.4	0.0	0.0	353.1	0.0	0.0
387+51	TO	387+91	LT	2	40	8.9	8.9	0.0	0.0	6.4	0.0	0.0	0.0	1.0	0.0
387+91	TO	418+62.34	LT	2	3071.34	682.5	0.0	682.5	0.0	982.8	76.4	66.9	0.0	80.2	143.3
STA EQ 418+62.34 BK = 1200+00.00 AH															
1200+00.00	TO	1218+16	LT	2	1816	403.6	0.0	403.6	0.0	581.2	45.2	39.6	0.0	47.4	84.8
1218+16	TO	1242+34	LT	6	2418	1612.0	0.0	0.0	1,612.0	1,160.6	0.0	0.0	158.0	0.0	0.0
1242+34	TO	1276+71	LT	2	3437	763.8	0.0	763.8	0.0	1,099.9	85.5	74.9	0.0	89.8	160.4
1276+71	TO	1277+72	LT	9	101	101.0	0.0	0.0	101.0	72.7	0.0	0.0	9.9	2.6	0.0
SN 062-0008															
1278+12	TO	1278+82	LT	9	70	70.0	0.0	0.0	70.0	50.4	0.0	0.0	6.9	1.8	0.0
1278+82	TO	1303+35	LT	2	2453	545.1	0.0	545.1	0.0	784.9	61.1	53.4	0.0	64.1	114.5
1303+35	TO	1307+50	LT	7	415	322.8	0.0	0.0	322.8	232.4	0.0	0.0	31.6	10.8	0.0
1307+50	TO	1337+13	LT	2	2963	658.4	0.0	658.4	0.0	948.1	73.7	64.5	0.0	77.4	138.3
1337+13	TO	1339+93	LT	8	280	248.9	0.0	0.0	248.9	179.2	0.0	0.0	24.4	7.3	0.0
1339+93	TO	1340+33	LT	8	40	35.6	35.6	0.0	0.0	25.6	0.0	0.0	0.0	1.0	0.0
SN 062-0010															
1340+59	TO	1340+99	LT	2	40	8.9	8.9	0.0	0.0	6.4	0.0	0.0	0.0	1.0	0.0
1340+99	TO	1373+42	LT	2	3243	720.7	0.0	720.7	0.0	1,037.8	80.7	70.6	0.0	84.7	151.3
MARSHALL COUNTY - RURAL SUBTOTALS							151.1	4,602.8	20,201.5	21,281.9	515.5	451.1	1,979.7	612.1	966.6

FOR INFORMATION ONLY - SHOULDER TOTALS ARE INCLUDED IN THE RESURFACING TABLE (ROADWAY)

MODEL: Default
 FILE: \\s:\pub\baronm.d\at\illinois.gov\PIWDOT\Documents\DOT_Offices\District_4\Projects\ID4_68D68\CAD\Drawings\CAD\Drawings\468D68 - Full Plans.dgn

USER NAME = hudelsonme	DESIGNED -	REVISED -
	DRAWN -	REVISED -
PLOT SCALE = 100.0000' / in.	CHECKED -	REVISED -
PLOT DATE = 6/3/2019	DATE -	REVISED -

**STATE OF ILLINOIS
DEPARTMENT OF TRANSPORTATION**

SCHEDULE OF QUANTITIES

SCALE: SHEET OF SHEETS STA. TO STA.

F.A.P. RTE.	SECTION	COUNTY	TOTAL SHEETS	SHEET NO.
318	8RS-8.6RS-3.5RS-2.4RS-4.3RS-5	Peoria/Marshall	37	15
CONTRACT NO. 68D68				
ILLINOIS FED. AID PROJECT				

PERMANENT SURVEY MARKERS TYPE I			
STATION	LOCATION	EACH	DESCRIPTION
MARSHALL COUNTY			
414+50.00	CL CONST.	1	P.C.
416+67.42	CL CONST.	1	P.I.
1202+39.93	CL CONST.	1	P.I.
1213+03.92	CL CONST.	1	P.O.T.
1221+00	CL CONST.	1	P.O.T.
1229+05.22	CL CONST.	1	P.O.T.
1235+00	CL CONST.	1	P.O.T.
1240+96.25	CL CONST.	1	P.O.T.
1248+00	CL CONST.	1	P.O.T.
1255+66.39	CL CONST.	1	P.C.
1263+50	CL CONST.	1	P.O.C.
1271+33.50	CL CONST.	1	P.T.
1280+50	CL CONST.	1	P.C.
1299+65.49	CL CONST.	1	P.C.
1295+50	CL CONST.	1	P.O.C.
1301+27.50	CL CONST.	1	P.T.
1307+28.42	CL CONST.	1	P.I.
1311+63.27	CL CONST.	1	P.I.
1322+50.87	CL CONST.	1	P.C.
1327+91.80	CL CONST.	1	P.T.
1335+50	CL CONST.	1	P.O.T.
1343+02.42	CL CONST.	1	P.I.
1347+37.27	CL CONST.	1	P.I.
1356+50	CL CONST.	1	P.O.T.
1365+61.57	CL CONST.	1	P.C.
1371+50	CL CONST.	1	P.O.C.
MARSHALL COUNTY RURAL SUBTOTAL		26	

PERMANENT SURVEY MARKERS TYPE I (CONTINUED)			
STATION	LOCATION	EACH	DESCRIPTION
PEORIA COUNTY			
1377+24.02	CL CONST.	1	P.C.
1388+00	CL CONST.	1	P.C.
1392+17.42	CL CONST.	1	P.C.
1396+52.27	CL CONST.	1	P.C.
1402+95.62	CL CONST.	1	P.C.
1413+00	CL CONST.	1	P.C.
1422+51.6	CL CONST.	1	P.C.
1431+00	CL CONST.	1	P.C.
1440+00	CL CONST.	1	P.C.
1448+80.65	CL CONST.	1	P.C.
1457+50	CL CONST.	1	P.C.
1466+00	CL CONST.	1	P.C.
1474+91.04	CL CONST.	1	P.C.
1479+14.65	CL CONST.	1	P.C.
1487+00	CL CONST.	1	P.C.
1495+00	CL CONST.	1	P.C.
1502+00	CL CONST.	1	P.C.
1510+01.30	CL CONST.	1	P.C.
1520+00	CL CONST.	1	P.C.
1530+27.39	CL CONST.	1	P.C.
PEORIA COUNTY RURAL SUBTOTAL		20	
GRAND TOTAL		46	

RAISED REFLECTIVE PAVEMENT MARKER				
LOCATION			EACH	
STATION	TO	STATION	CRYSTAL	AMBER
MARSHALL COUNTY RURAL				
410+88	to	418+62 (BK)	1	47
1200+00 (AH)	to	1373+42	4	264
MARSHALL COUNTY RURAL SUBTOTAL			316	
PEORIA COUNTY RURAL				
1373+42	to	1535+50	30	282
PEORIA COUNTY RURAL SUBTOTAL			312	
TOTAL			628	

RAISED REFLECTIVE PAVEMENT MARKER REMOVAL			
LOCATION			EACH
STATION	TO	STATION	
MARSHALL COUNTY RURAL			
387+51	to	418+62 (BK)	48
1200+00 (AH)	to	1373+42	268
MARSHALL COUNTY RURAL SUBTOTAL			316
PEORIA COUNTY RURAL			
1373+42	to	1535+50	312
PEORIA COUNTY RURAL SUBTOTAL			312
TOTAL			628

MODEL: Default
 FILE: \\hpc-pub\hpcroom\data\illinois.gov\PIWDOT\Documents\DOT_Offices\Director_of_Planning\Projects\104_60688\CD\Drawings\CAD\Drawings\10460688_Full Plans.dgn

USER NAME = hudelsonme	DESIGNED -	REVISED -
	DRAWN -	REVISED -
PLOT SCALE = 100,0000' / in.	CHECKED -	REVISED -
PLOT DATE = 6/3/2019	DATE -	REVISED -

STATE OF ILLINOIS
DEPARTMENT OF TRANSPORTATION

SCHEDULE OF QUANTITIES			
SCALE:	SHEET	OF	SHEETS

F.A.P. RTE.	SECTION	COUNTY	TOTAL SHEETS	SHEET NO.
318	8RS-8,6RS-3,5RS-2,4RS-4,3RS-5	Peoria/Marshall	37	17
				CONTRACT NO. 68D68
				ILLINOIS FED. AID PROJECT

TEMPORARY & MODIFIED URETHANE PAVEMENT MARKINGS														
STATION	TO	STATION	LENGTH FEET	WHITE		YELLOW				SOLID WHITE			LTR & SYM	
				SOLID 4" (FOOT)		SOLID 4" (FOOT)		DASH (FOOT)	SOLID 12" (FOOT)	(FOOT)	(FOOT)	(FOOT)	(SQ FT)	
				LT	RT	LT	RT	4"	12"	12"	8"	24"	ARROWS	
MARSHALL COUNTY RURAL														
387+51	to	389+91	240	240	175	480	480		115		52		15.6	
389+91	to	391+91	200	200	200	200		50						
391+91	to	418+62	2,671	2,671	2,524	1,160	1,160	379						
410+88	to	418+62	774											
1200+00	to	1290+00	9,000	9,000	9,000			2,250						
1290+00	to	1298+50	850	850	850			213						
1298+50	to	1304+27	577	577	577	577	577							
1304+27	to	1314+41	1,014	1,014	914	3,612			311		100		31.2	
1314+41	to	1319+20	479	479	479	479		120						
1319+20	to	1373+42	5,422	5,422	5,422			1,356						
MARSHALL COUNTY RURAL SUBTOTAL				53,687				426		152	0	46.8		
PEORIA COUNTY RURAL														
1373+42	to	1469+00	9,558	9,558	9,558	0	0	2,390			125			
1469+00	to	1477+00	800	800	800	0	800	200						
1477+00	to	1486+31	931	931	931	2,504			190	118	822	30	62.4	
(Includes Yankee Lane Intersection)														
1486+31	to	1504+33	1,802	3,413		4,299			379	18	361	37	46.8	
(Includes Hart Lane Intersection)														
1504+33	to	1535+50	3,117	3,120	3,120	0		780			410			
PEORIA COUNTY RURAL SUBTOTAL				43,204				705		1,718	67	109.2		
TOTALS				96,891				1,131		1,870.0	67.0	156.0		

PROPOSED GUARDRAIL						
STATION	SIDE	GUARDRAIL	TRAFF BARR	TERMINAL	GUARDRAIL	GUARDRAIL
		REMOVAL	TERM TY 1	MARKER	REFLECTOR	AGG EROS
		FOOT	SPL TAN	DIR APP	TY A	CONTROL
		EACH	EACH	EACH	EACH	TON
MARSHALL COUNTY RURAL						
388+51	LT	50.0	1	1	1	11.4
415+06	LT	50.0	1	1	1	11.4
417+11	LT	50.0	1	1	1	11.4
1217+73	LT	50.0	1	1	1	11.4
1242+95	LT	50.0	1	1	1	11.4
1243+50	LT	50.0	1	1	1	11.4
1245+56	LT	50.0	1	1	1	11.4
1276+31	LT	50.0	1	1	1	11.4
1276+98	RT	50.0	1	1	1	11.4
1278+68	LT	50.0	1	1	1	11.4
1279+20	RT	50.0	1	1	1	11.4
1300+04	RT	50.0	1	1	1	11.4
1300+15	LT	50.0	1	1	1	11.4
1305+95	RT	50.0	1	1	1	11.4
1307+43	LT	50.0	1	1	1	11.4
1339+18	LT	50.0	1	1	1	11.4
1339+18	RT	50.0	1	1	1	11.4
1341+72	RT	50.0	1	1	1	11.4
1342+69	LT	50.0	1	1	1	11.4
SUBTOTAL		950.0	19.0	19.0	19.0	217.0
PEORIA COUNTY RURAL						
1471+30	LT	50.0	1	1	1	11.4
1472+57	RT	50.0	1	1	1	11.4
1476+90	RT	50.0	1	1	1	11.4
1477+24	LT	50.0	1	1	1	11.4
1532+20	RT	50.0	1	1	1	11.4
1533+22	LT	50.0	1	1	1	11.4
SUBTOTAL		300.0	6.0	6.0	6.0	68.0
TOTAL		1,250	25	25	25	285

MODEL: Default
 FILE: \\hpc-pub\hpcroom\dat\illinois.gov\PIWDOT\Documents\DOT_Offices\Director_of_Plans\Projects\14_68D68\CA\Drawings\CA\Drawings\1468D68_Full_Plans.dgn

USER NAME = hudelsonme	DESIGNED -	REVISED -
	DRAWN -	REVISED -
PLOT SCALE = 100,0000' / in.	CHECKED -	REVISED -
PLOT DATE = 6/3/2019	DATE -	REVISED -

**STATE OF ILLINOIS
DEPARTMENT OF TRANSPORTATION**

SCHEDULE OF QUANTITIES

SCALE: SHEET OF SHEETS STA. TO STA.

F.A.P. RTE.	SECTION	COUNTY	TOTAL SHEETS	SHEET NO.
318	8RS-8.6RS-3.5RS-2.4RS-4.3RS-5	Peoria/Marshall	37	18
CONTRACT NO. 68D68				
ILLINOIS FED. AID PROJECT				

SHORT TERM PAVEMENT MARKING					
STATION	TO	STATION	LENGTH (FEET)	MAINLINE (FOOT)	SHOULDERS (FOOT)
MARSHALL COUNTY RURAL					
387+51	to	418+62	3,111	348	32
1200+00	to	1373+42	17,342	1,956	756
SUBTOTAL PER APPLICATION				2,304	788
X 3 APPLICATIONS				6,912	
MARSHALL RURAL SUBTOTAL				7,700	
PEORIA COUNTY RURAL					
1373+42	to	1469+00	9,558	872	100
1469+00	to	1477+00	800	72	32
1477+00	to	1486+31	931 (Includes Yankee Ln Intersection)	512	0
1486+31	to	1504+33			
1504+33	to	1535+50	3,117	324	16
SUBTOTAL PER APPLICATION				2,576	148
X 3 APPLICATIONS				7,728	
PEORIA RURAL SUBTOTAL				7,876	
JOB TOTAL				15,576 FEET	

SHORT TERM PAVEMENT MARKING REMOVAL			
STATION	TO	STATION	REMOVAL (SQ FT)
MARSHALL COUNTY RURAL			
387+51	to	418+62	2,931
1200+00	to	1373+42	
062-0010 STAGING MARKINGS			
PEORIA COUNTY RURAL			
1373+42	to	1535+50	2,600
JOB TOTA			5,531 SQ FT

ENGINEER'S FIELD OFFICE, TYPE A	
LOCATION	CAL MO
MARSHALL COUNTY RURAL	3
PEORIA COUNTY RURAL	2
TOTAL	5

MOBILIZATION	
LOCATION	L SUM
MARSHALL COUNTY RURAL	0.6
PEORIA COUNTY RURAL	0.4
TOTAL	1

CONSTRUCTION STATION LAYOUT	
LOCATION	L SUM
MARSHALL COUNTY RURAL	0.6
PEORIA COUNTY RURAL	0.4
TOTAL	1

TRAFFIC CONTROL & PROTECTION STD 701201	
LOCATION	L SUM
MARSHALL COUNTY RURAL	0.6
PEORIA COUNTY RURAL	0.4
TOTAL	1

TRAFFIC CONTROL & PROTECTION STD 701306	
LOCATION	L SUM
MARSHALL COUNTY RURAL	0.6
PEORIA COUNTY RURAL	0.4
TOTAL	1

TRAFFIC CONTROL & PROTECTION STD 701316	
LOCATION	EACH
SN 062-0010	1
TOTAL	1

TEMPORARY BRIDGE TRAFFIC SIGNALS	
LOCATION	EACH
SN 062-0010	1
TOTAL	1

TRAFFIC CONTROL SURVEILLANCE	
LOCATION	CAL DA
SN 062-0010	10
TOTAL	10

WATERPROOFING MEMBRANE SYSTEM	
LOCATION	SQ YD
SN 062-0010	122
TOTAL	122

HMA SURFACE REMOVAL (DECK)	
LOCATION	SQ YD
SN 062-0010	122
TOTAL	122

CHANGEABLE MESSAGE SIGNS	
LOCATION	CAL DA
SN 062-0010 (2 SIGNS)	20
TOTAL	20

PAVEMENT MARKING REMOVAL - GRIND	
LOCATION	SQ FT
SN 062-0010	306
TOTAL	306

PAVEMENT MARKING TAPE, TYPE IV 4"	
LOCATION	FOOT
SN 062-0010	1010
TOTAL	1010

PAVEMENT MARKING TAPE, TYPE IV 24"	
LOCATION	FOOT
SN 062-0010	26
TOTAL	26

DECK SLAB REPAIR (PARTIAL)	
LOCATION	SQ YD
SN 062-0010	13
TOTAL	13

MOWING	
LOCATION	ACRE
MARSHALL COUNTY RURAL	14.1
PEORIA COUNTY RURAL	11.1
TOTAL	25.2

RUMBLE STRIP	
LOCATION	FOOT
MARSHALL COUNTY RURAL	18416
PEORIA COUNTY RURAL	14457
TOTAL	32873

INLET TO BE ADJUSTED	
LOCATION	EACH
1242+50 LT	1
TOTAL	1

MODEL: Default
 FILE: \\hpc1\pub\hpc\room\dat\illinois.gov\RWIDOT\Documents\DOT_Offices\IDT\et_c\Project\ID4_6068\CAD\Drawings\CAD\Drawings\68D68_Full Plans.dgn

USER NAME = hudelsonme	DESIGNED -	REVISED -
	DRAWN -	REVISED -
PLOT SCALE = 100.0000' / in.	CHECKED -	REVISED -
PLOT DATE = 6/3/2019	DATE -	REVISED -

**STATE OF ILLINOIS
 DEPARTMENT OF TRANSPORTATION**

SCHEDULE OF QUANTITIES			
SCALE:	SHEET	OF SHEETS	STA. TO STA.

F.A.P. RTE.	SECTION	COUNTY	TOTAL SHEETS	SHEET NO.
318	8RS-8,6RS-3,5RS-2,4RS-4,3RS-5	Peoria/Marshall	37	19
				CONTRACT NO. 68D68
				ILLINOIS FED. AID PROJECT



SPARLAND

PROJECT BEGINS
STA. 387+51

SN 062-0008
STA. 1277+92
BARRVILLE CREEK

SN 062-0010
STA. 1340+46
IL RIVER TRIB.

SN 062-0057
386+93
GIMLET CREEK

ELM ST.
WILLOW ST.

RAILROAD ST.
(TO BE RESURFACED)

SN 062-0009

HOPEWELL DR.

MATCH LINE
PEORIA COUNTY
MARSHALL COUNTY

STA. 1373+42

PEORIA COUNTY
MARSHALL COUNTY
MATCH LINE

STA. 1373+42

N CREW LANE

N HARDCRABBLE ROAD

RIVERSIDE MATERIALS

PROJECT ENDS
STA. 1534+08

OMISSION
SN 072-0013
STA. 1474+92
COON CREEK

YANKEE LANE

HART LANE

SN 072-0014
STA. 1535+50
SENACHWINE CREEK

STATION EQUATIONS	
①	STA. 418+62.34 BK = STA. 1200+00.00 AH
②	STA. 1422+51.60 BK = STA. 1422+54.30 AH

CHILLICOTHE

MODEL: Default
FILE: \\marshall-peoria.com\data\illinois.gov\PIU\DOT\Documents\DOT_Offices\Director_ofProjects\ID4_60688\CAD\Drawings\CAD\Sheet\68D68_Full Plans.dgn

USER NAME = hudelsonme	DESIGNED -	REVISED -
PLOT SCALE = 100,0000' / in.	DRAWN -	REVISED -
PLOT DATE = 6/3/2019	CHECKED -	REVISED -
	DATE -	REVISED -

STATE OF ILLINOIS
DEPARTMENT OF TRANSPORTATION

LINE DIAGRAM

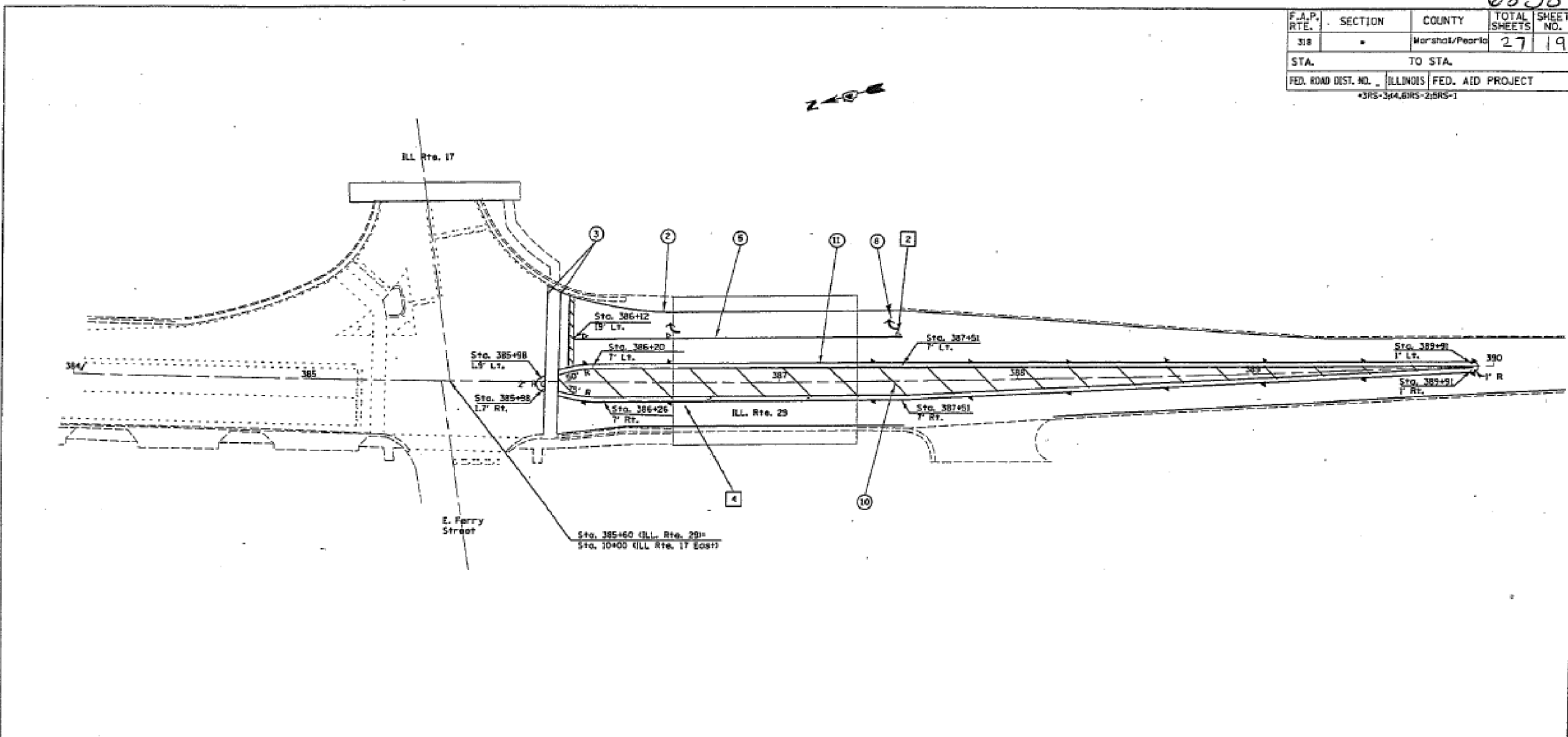
SCALE: SHEET OF SHEETS STA. TO STA.

F.A.P. RTE.	SECTION	COUNTY	TOTAL SHEETS	SHEET NO.
318	8RS-8,6RS-3,5RS-2,4RS-4,3RS-5	Peoria/Marshall	37	20
ILLINOIS FED. AID PROJECT			CONTRACT NO. 68D68	

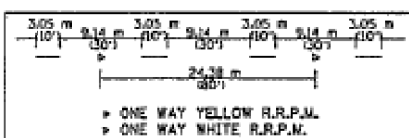
NOT TO SCALE

68387

F.A.P. RTE.	SECTION	COUNTY	TOTAL SHEETS	SHEET NO.
318		Marshall/Peoria	27	19
STA.		TO STA.		
FED. ROAD DIST. NO.		ILLINOIS FED. AID PROJECT		
*3RS-3&4,6RS-2&5RS-1				



PAVEMENT MARKING LEGEND		RAISED REFLECTIVE PAVEMENT MARKERS (RRPM)	
① 100 (H) SOLID (YELLOW)		① ONE-WAY CRYSTAL MARKER AT 24.38 (80') CENTERS	
② 100 (H) SOLID (WHITE)		② ONE-WAY CRYSTAL MARKER AT 12.19 (40') CENTERS	
③ 150 (H) SOLID (WHITE)		③ ONE-WAY CRYSTAL MARKER AT 6.09 (20') CENTERS	
④ 150 (H) SKIP DASH (WHITE)		④ ONE-WAY AMBER MARKER AT 12.19 (40') CENTERS	
⑤ 200 (H) SOLID (WHITE)		⑤ TWO-WAY AMBER MARKER AT 12.19 (40') CENTERS FOR SPEEDS LESS THAN 45 MPH	
⑥ 300 (2) DIAGONAL (WHITE)		⑥ TWO-WAY AMBER MARKER AT 24.38 (80') CENTERS FOR SPEEDS GREATER THAN 45 MPH	
⑦ 500 (2) STOP BAR (WHITE)		⑦ ONE-WAY CRYSTAL MARKER	
⑧ LETTERS AND ARROWS		⑧ ONE-WAY AMBER MARKER	
⑨ 100 (H) SKIP DASH (YELLOW)		DELINEATORS	
⑩ 300 (2) DIAGONAL (YELLOW)		■ DELINEATOR WITH TWO AMBER REFLECTORS	
⑪ 100 (H) DOUBLE (YELLOW)		■ DELINEATOR WITH THREE AMBER REFLECTORS	
All dimensions are in millimeters (inches unless otherwise shown).			



ILLINOIS DEPARTMENT OF TRANSPORTATION
**PAVEMENT MARKING
DETAILS**
SCALE: NOT TO SCALE
DATE:

S:\GEN\DRAW\STD&PLNS\SQUAD3\68387 Sparland to Chillasothe\plans.dgn

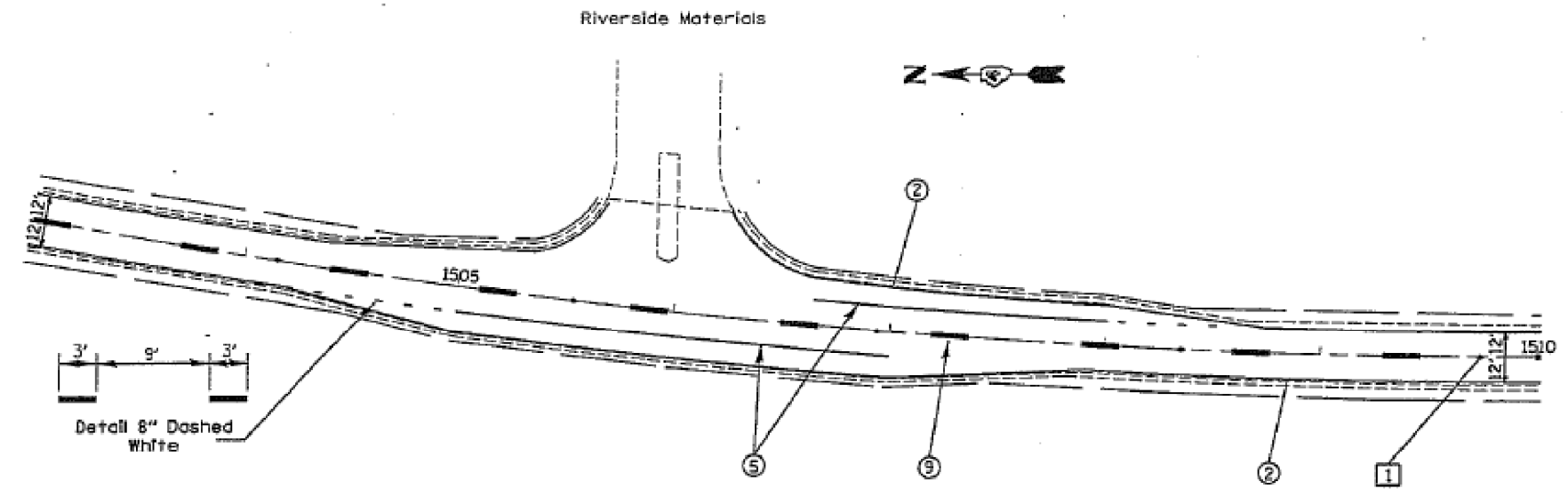
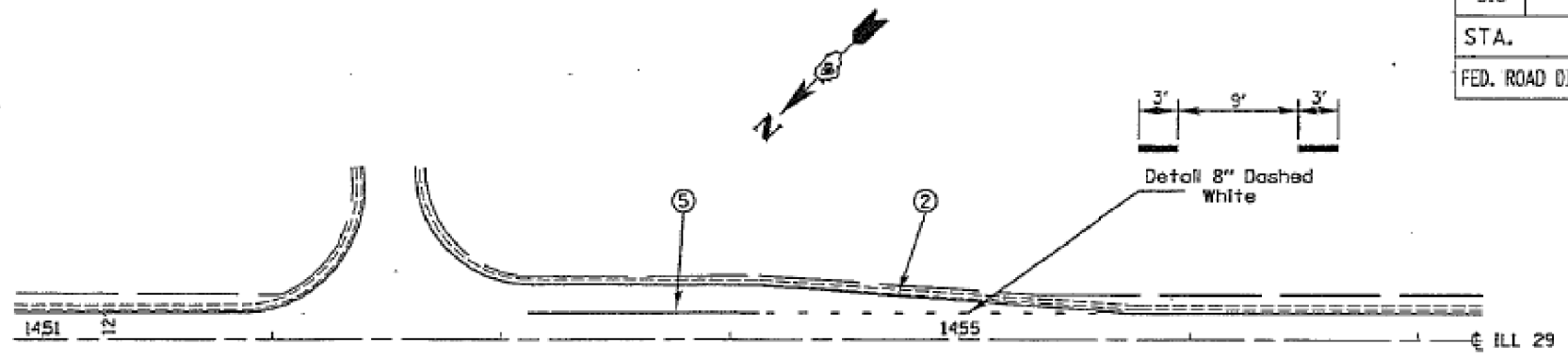
FOR INFORMATION ONLY

FILE NAME =	USER NAME = hudelsonne	DESIGNED -	REVISED -	STATE OF ILLINOIS DEPARTMENT OF TRANSPORTATION	IL 17 PAVEMENT MARKING	F.A.P.	SECTION	COUNTY	TOTAL SHEETS	SHEET NO.	
pw\planroom.dot\illinois.gov\PWDOT\Documents\DOT	Office\District 4\Projects\D4_68D68\CADDData\CADsheets\D468387	DRAWN -	REVISED -			318	8RS-8,6RS-3,5RS-2,4RS-4,3RS-5	Peoria/Marshall	37	21	
Default		CHECKED -	REVISED -			CONTRACT NO. 68D68					
		DATE -	REVISED -			ILLINOIS FED. AID PROJECT					

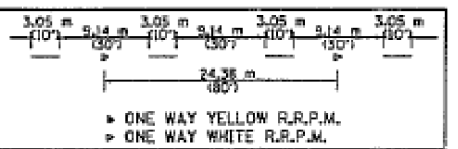
NOT TO SCALE

68387

F.A.P. RTE.	SECTION	COUNTY	TOTAL SHEETS	SHEET NO.
318		Marshall/Peoria	27	22
STA. _____ TO STA. _____		FED. ROAD DIST. NO. _____ ILLINOIS FED. AID PROJECT		
*3RS-3;(4,6)RS-2;5RS-1				



PAVEMENT MARKING LEGEND		RAISED REFLECTIVE PAVEMENT MARKERS (RRPM)	
① 100 (4) SOLID (YELLOW)		① ONE-WAY CRYSTAL MARKER AT 24.38 (80') CENTERS	
② 100 (4) SOLID (WHITE)		② ONE-WAY CRYSTAL MARKER AT 12.19 (40') CENTERS	
③ 150 (6) SOLID (WHITE)		③ ONE-WAY CRYSTAL MARKER AT 6.10 (20') CENTERS	
④ 150 (6) SKIP DASH (WHITE)		④ ONE-WAY AMBER MARKER AT 12.19 (40') CENTERS	
⑤ 200 (8) SOLID (WHITE)		⑤ TWO-WAY AMBER MARKER AT 12.19 (40') CENTERS FOR SPEEDS LESS THAN 45 MPH	
⑥ 300 (12) DIAGONAL (WHITE)		⑥ TWO-WAY AMBER MARKER AT 24.38 (80') CENTERS FOR SPEEDS GREATER THAN 45 MPH	
⑦ 600 (24) STOP BAR (WHITE)		⑦ ONE-WAY CRYSTAL MARKER	
⑧ LETTERS AND ARROWS		⑧ ONE-WAY AMBER MARKER	
⑨ 100 (4) SKIP DASH (YELLOW)		DELINEATORS	
⑩ 300 (12) DIAGONAL (YELLOW)		■ DELINEATOR WITH TWO AMBER REFLECTORS	
⑪ 100 (4) DOUBLE (YELLOW)		■ DELINEATOR WITH THREE AMBER REFLECTORS	



ILLINOIS DEPARTMENT OF TRANSPORTATION
PAVEMENT MARKING DETAILS
 SCALE: Not to Scale
 DATE: _____

S:\GEN\DRAW\STD&PLNS\SQUAD3\68687 Spurlend to Chillsothe\plans.dgn

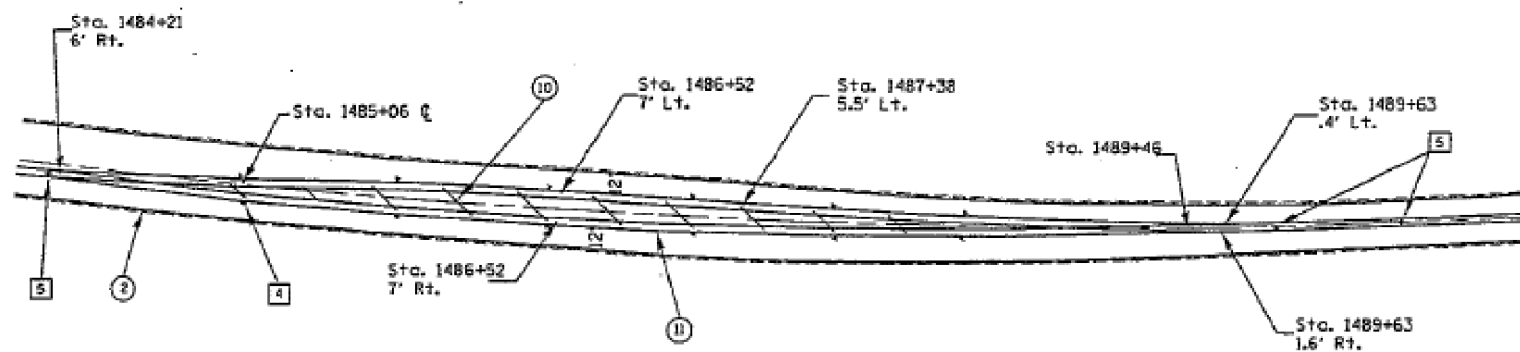
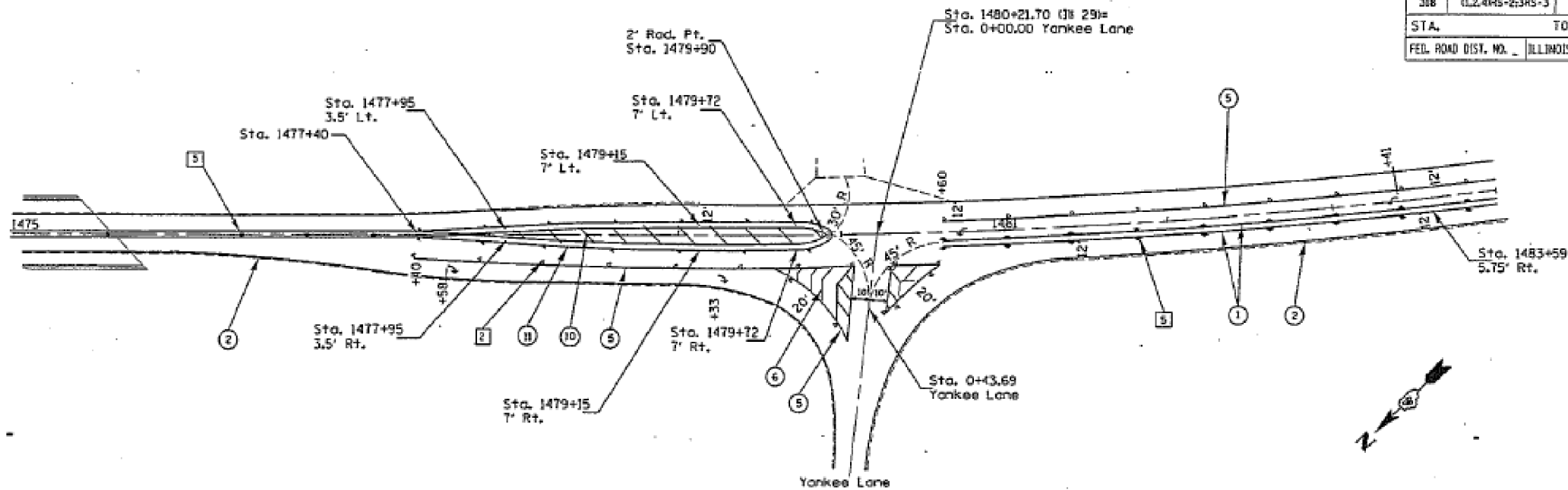
FOR INFORMATION ONLY

FILE NAME =	USER NAME = hudelsonne	DESIGNED -	REVISED -	STATE OF ILLINOIS DEPARTMENT OF TRANSPORTATION	RIVERSIDE MAT'LS & HARDCRABBLE RD PAVEMENT MARKING	F.A.P.	SECTION	COUNTY	TOTAL SHEETS	SHEET NO.	
pw\planroom\dot\illinois.gov\PWDOT\Documents\DOT\Files\District 4\Projects\D4_68D68\CADData\CADsheets\D468386\DRAWN.dgn	PLOT SCALE = 100,0000 / 1in.	CHECKED -	REVISED -			318	8RS-8,6RS-3,5RS-2,4RS-4,3RS-5	Peoria/Marshall	37	23	
Default	PLOT DATE = 5/31/2019	DATE -	REVISED -			RTE. IL 29			CONTRACT NO. 68D68		
						SCALE:	SHEET	OF	SHEETS	STA.	TO

NOT TO SCALE

68387

F.A.P. RTE.	SECTION	COUNTY	TOTAL SHEETS	SHEET NO.
318	IL24RS-2,3RS-3	Marshall	27	21
STA. _____		TO STA. _____		
FED. ROAD DIST. NO. _____		ILLINOIS FED. AID PROJECT		



PAVEMENT MARKING LEGEND

① 100 (R) SOLID YELLOW	
② 100 (W) SOLID WHITE	
③ 150 (R) SOLID WHITE	
④ 150 (R) SKIP DASH WHITE	
⑤ 200 (R) SOLID WHITE	
⑥ 200 (R) DIAGONAL WHITE	
⑦ 600 (R) STOP BAR WHITE	
⑧ LETTERS AND ARROWS	
⑨ 100 (R) SKIP DASH YELLOW	
⑩ 300 (R) DIAGONAL YELLOW	
⑪ 100 (R) DOUBLE YELLOW	

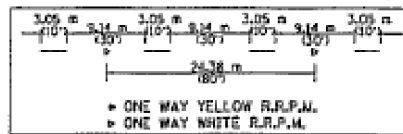
RAISED REFLECTIVE PAVEMENT MARKERS (RRPM)

①	ONE-WAY CRYSTAL MARKER AT 24.38 (W207) CENTERS
②	ONE-WAY CRYSTAL MARKER AT 12.19 (W207) CENTERS
③	ONE-WAY CRYSTAL MARKER AT 6.10 (W207) CENTERS
④	ONE-WAY AMBER MARKER AT 24.38 (W207) CENTERS
⑤	TWO-WAY AMBER MARKER AT 24.38 (W207) CENTERS FOR SPEEDS LESS THAN 45 MPH
⑥	TWO-WAY AMBER MARKER AT 24.38 (W207) CENTERS FOR SPEEDS GREATER THAN 45 MPH

DELINEATORS

⊞	DELINEATOR WITH TWO AMBER REFLECTORS
⊞	DELINEATOR WITH THREE AMBER REFLECTORS

All dimensions are in millimeters unless otherwise shown.



ILLINOIS DEPARTMENT OF TRANSPORTATION
PAVEMENT MARKING
DETAILS

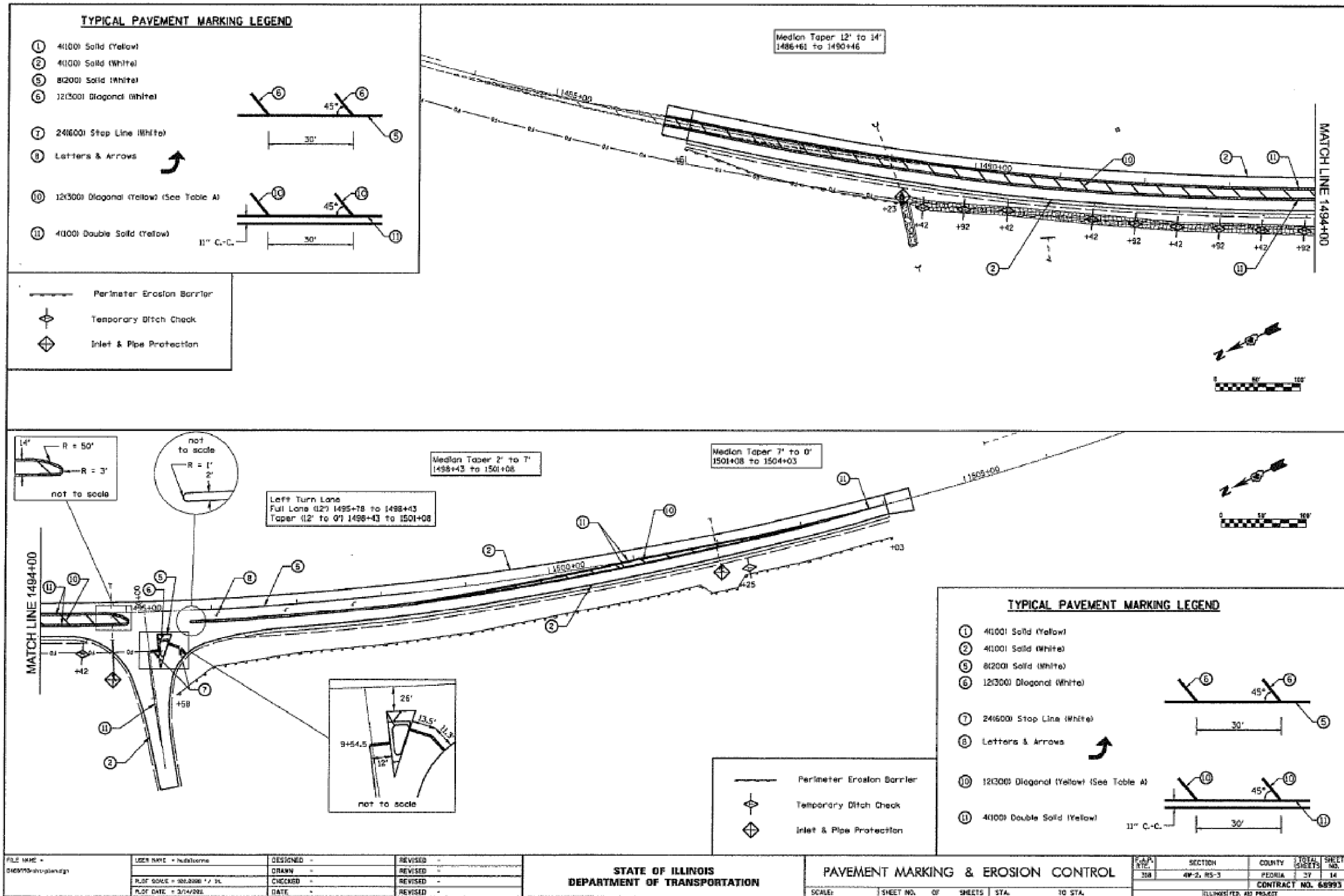
SCALE: Not to Scale
DATE: _____

si:\GEN\DRAW\STD&PLN\SQUAD3\68387 Sperland to Chalicthe\pvmkg.dgn

FOR INFORMATION ONLY

FILE NAME =	USER NAME = hudelsonme	DESIGNED -	REVISED -	STATE OF ILLINOIS DEPARTMENT OF TRANSPORTATION	YANKEE LANE PAVEMENT MARKING	F.A.P.	SECTION	COUNTY	TOTAL SHEETS	SHEET NO.
pw:\planroom\dot\illinois\gov\PWDOT\Documents\DOT\Office\District 4\Projects\D4_68D68\CADDData\CADsheets\D468387\68387.dgn	DESIGNED -	REVISED -	REVISED -			318	8RS-8,6RS-3,5RS-2,4RS-4,3RS-5	Peoria/Marshall	37	24
Default	PLOT SCALE = 100,0000 1/in.	CHECKED -	REVISED -			RTE. IL 29			CONTRACT NO. 68D68	
	PLOT DATE = 5/31/2019	DATE -	REVISED -	SCALE: SHEET OF SHEETS STA. TO STA.		ILLINOIS FED. AID PROJECT				

NOT TO SCALE



FOR INFORMATION ONLY

FILE NAME = D:\65770\hrtplandgn	USER NAME = hudelsonne	DESIGNED - DRAWN -	REVISED - REVISED -
PLOT SCALE = 100.0000' / 1"	DATE = 5/31/2019	CHECKED - DATE -	REVISED - REVISED -

STATE OF ILLINOIS
DEPARTMENT OF TRANSPORTATION

PAVEMENT MARKING & EROSION CONTROL

F.A.P. SHEET NO.	SECTION	COUNTY	TOTAL SHEETS	SHEET NO.
318	4P-2, RS-3	PEORIA	37	25

FILE NAME = Default	USER NAME = hudelsonne	DESIGNED - DRAWN -	REVISED - REVISED -
PLOT SCALE = 100.0000' / 1"	DATE = 5/31/2019	CHECKED - DATE -	REVISED - REVISED -

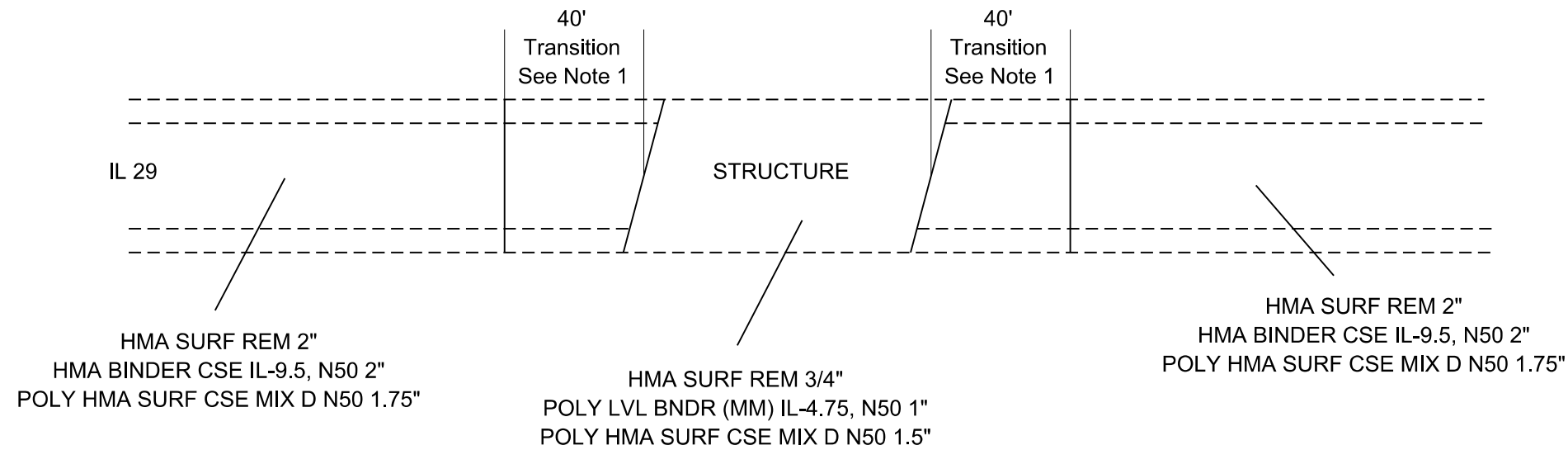
STATE OF ILLINOIS
DEPARTMENT OF TRANSPORTATION

SCALE:		SHEET	OF	SHEETS	STA.	TO	STA.
--------	--	-------	----	--------	------	----	------

HART LANE
PAVEMENT MARKING

F.A.P. SHEET NO.	SECTION	COUNTY	TOTAL SHEETS	SHEET NO.
318	8RS-6,8RS-3,5RS-2,4RS-4,3RS-5	Peoria/Marshall	37	25
RTE. IL 29 CONTRACT NO. 68D68				
ILLINOIS FED. AID PROJECT				

SN 062-0008



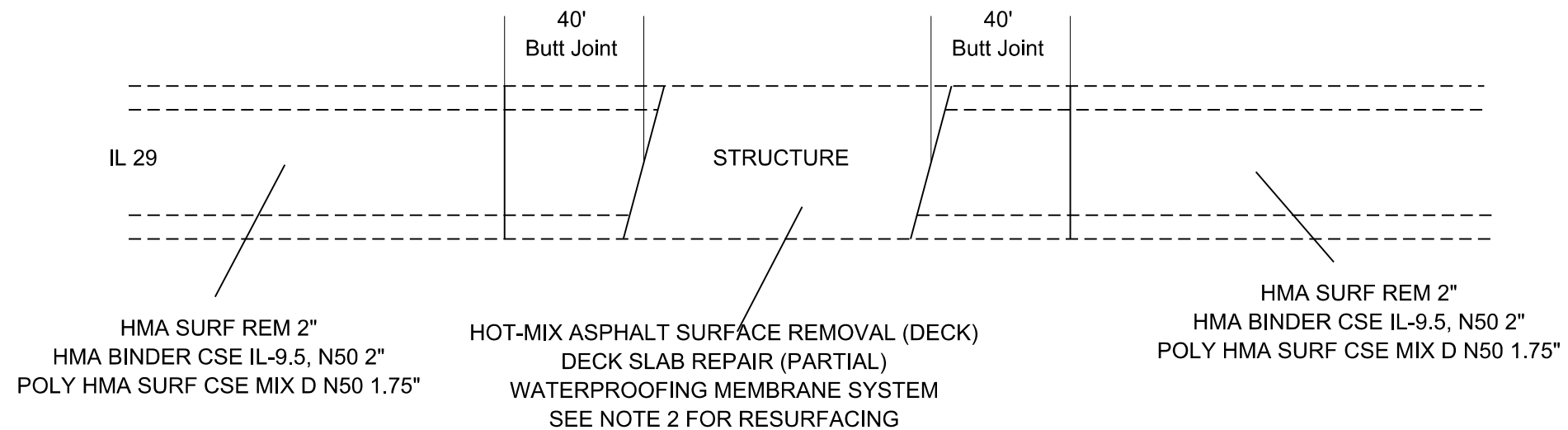
NOTE 1: TRANSITION THICKNESS OF SURFACE COURSE FROM 1.75" TO 1.5"
 TRANSITION FROM HMA BINDER CSE IL-9.5, N50 TO POLYMER LEVELING BINDER (MACHINE METHOD), IL-4.75, N50
 MINIMUM THICKNESS OF HMA BINDER CSE IL-9.5, N50 = 1.5"
 MAXIMUM THICKNESS OF POLYMER LEVELING BINDER (MACHINE METHOD), IL-4.75, N50 = 1.5"
 MILLING IN TRANSITION AREA WILL BE PAID AS HMA SURFACE REMOVAL 2"

NOT TO SCALE

SN 062-0009

STRUCTURE IS UNDER FILL. RESURFACE OVER THE STRUCTURE USING THE SAME TREATMENT AS THE ADJACENT ROADWAY.

SN 062-0010



NOTE 2: SN 062-0010 CANNOT HAVE ANY ADDITIONAL DEAD WEIGHT.
 THE THICKNESS OF HMA PLACED MUST NOT EXCEED THE THICKNESS OF HMA REMOVED.
 IF THE EXISTING HMA = OR > 2.5" THEN IT SHALL BE REPLACED WITH 1" POLYMER LEVELING BINDER (MACHINE METHOD), IL-4.75, N50
 AND POLY HMA SURFACE CSE, MIX "D", N50.
 IF THE EXISTING HMA < 2.5" THEN IT SHALL BE REPLACED WITH POLY HMA SURFACE CSE, MIX "D", N50.

NOT TO SCALE

SN 072-0013

STRUCTURE TO BE OMITTED

MODEL: Default
 FILE: Model - 20190531.dwg
 PROJECT: 68D68
 SHEET: 26
 DATE: 5/31/2019

USER NAME = hudelsonme	DESIGNED -	REVISED -
	DRAWN -	REVISED -
PLOT SCALE = 100.0000' / in.	CHECKED -	REVISED -
PLOT DATE = 5/31/2019	DATE -	REVISED -

STATE OF ILLINOIS
 DEPARTMENT OF TRANSPORTATION

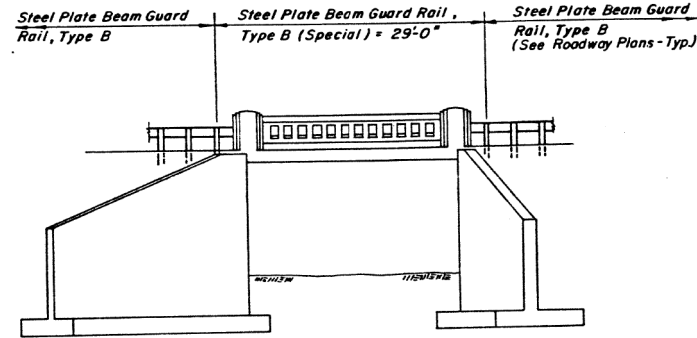
STRUCTURE DETAILS

SCALE: SHEET OF SHEETS STA. TO STA.

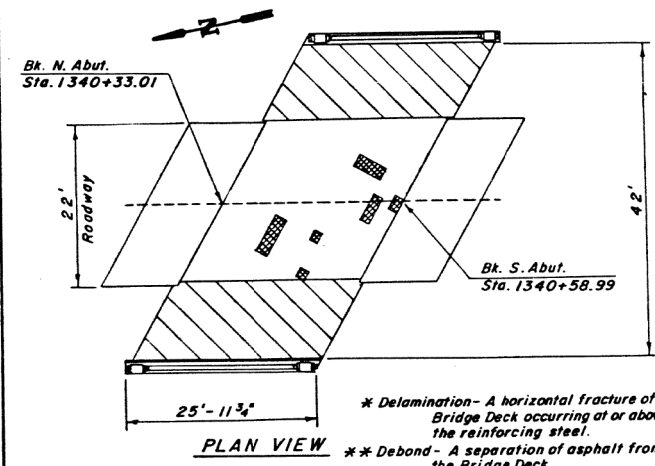
F.A.P. RTE.	SECTION	COUNTY	TOTAL SHEETS	SHEET NO.
318	8RS-8.6RS-3.5RS-2.4RS-4.3RS-5	Peoria/Marshall	37	26
				CONTRACT NO. 68D68
		ILLINOIS FED. AID PROJECT		

NOT TO SCALE

B.M. - P-233 USC B GS East Concrete Banister on Bridge
 Station 1340+49.27' Lt.
 Elev. 475.59
 Exist. Str. No. 062-0010



ELEVATION



LEGEND

Subsurface Delamination * Half Depth
 Debond **

AREAS (SQ. FT.)

Total Area ----- 1,068.2
 Delamination (Half Depth) ----- 28.0
 Debond ----- 500.0

Inspection Date 10/25/90

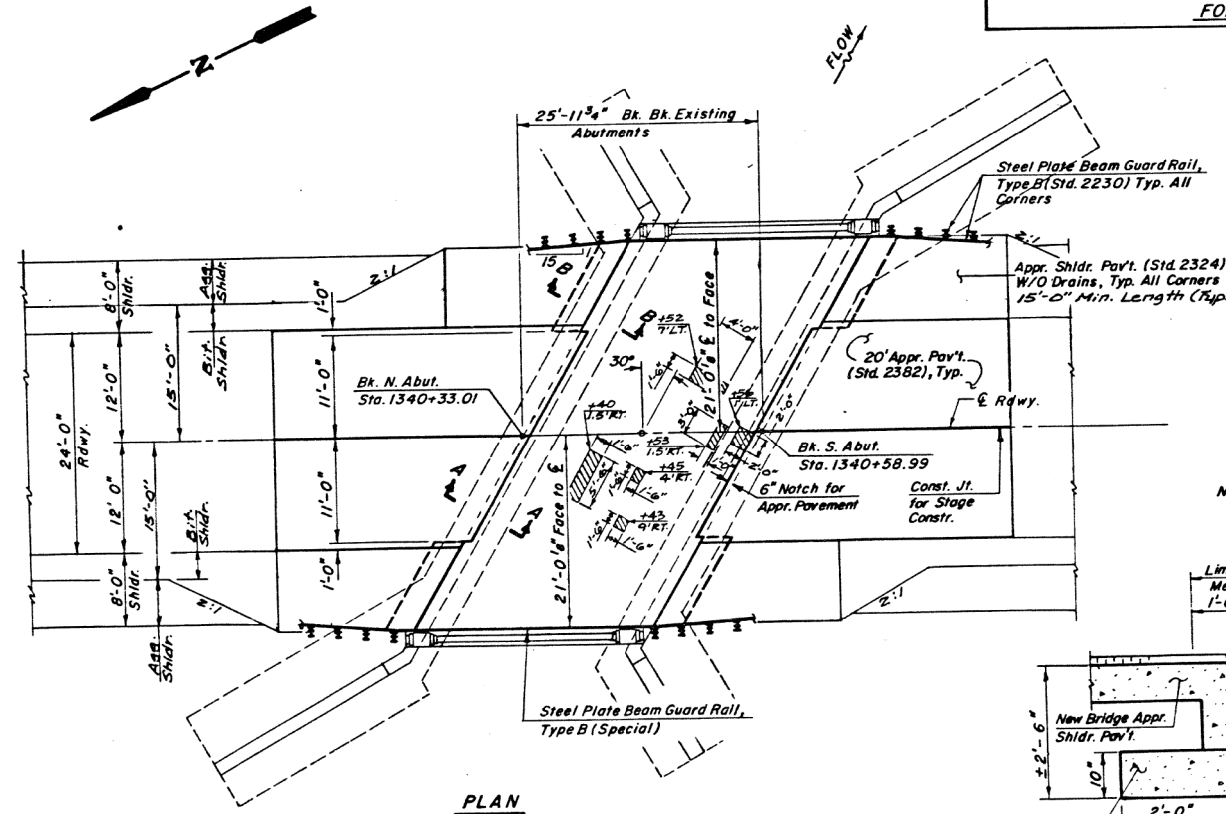
FOR INFORMATION ONLY

ROUTE NO.	SECTION	COUNTY	TOTAL SHEETS	SHEET NO.	SHEET
FA. 63	(4B)I	MARSHALL	223	81	2 SHEETS

GENERAL NOTES

Plan dimensions and details relative to existing structure have been taken from existing plans and are subject to nominal construction variations. It shall be the Contractor's responsibility to verify such dimensions and details in the field and make necessary approved adjustments prior to construction or ordering of materials. Such variations shall not be cause for additional compensation for a change in the scope of the work, however, the Contractor will be paid for the quantity actually placed at the unit price bid for the work.

NOTE: METHOD 1 DECK REPAIR SHALL BE USED.



APPROVED
 FOR STRUCTURAL ADEQUACY ONLY

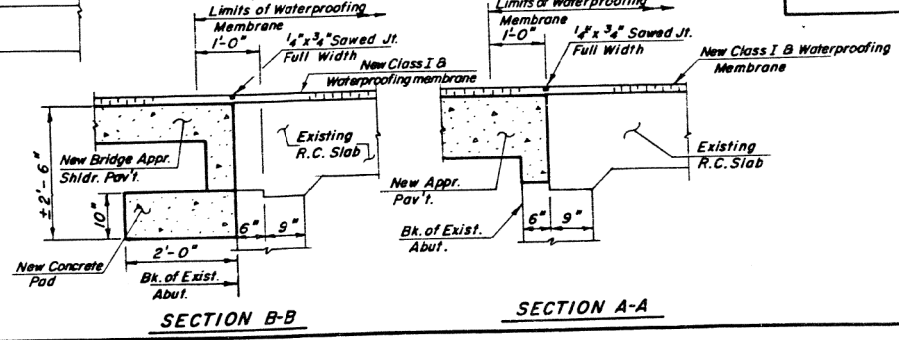
Engineer of Bridges and Structures

JAMES O. HAMILTON
 LICENSED PROFESSIONAL ENGINEER
 JACKSONVILLE, ILLINOIS

James O. Hamilton
 3/27/91
 Lic. Expires 4/30/92

Denotes proposed partial depth patching

Note: Those areas indicated on plan for partial depth patching are to be used only as a guide for bidding. Areas to be removed and partial depth patching shall be determined by the Engineer. See Special Provisions.



TOTAL BILL OF MATERIAL

ITEM	UNIT	QUANTITY
Bituminous Concrete Surface Course, Class I	Tons	9.7
Waterproofing Membrane System	Sq. Yd.	131
Steel Plate Beam Guard Rail, Type B (Special)	Lin. Ft.	58
Deck Slab Repair (Partial)	Sq. Yd.	3
Bituminous Concrete Surface Removal	Sq. Yd.	122

GENERAL PLAN
 F.A.P. 63 OVER UNNAMED CREEK
 SECTION (4B)I
 MARSHALL COUNTY
 STATION 1340+46
 STR. NO. 062-0010

STATE OF ILLINOIS
 DEPARTMENT OF TRANSPORTATION

STRUCTURE DETAILS

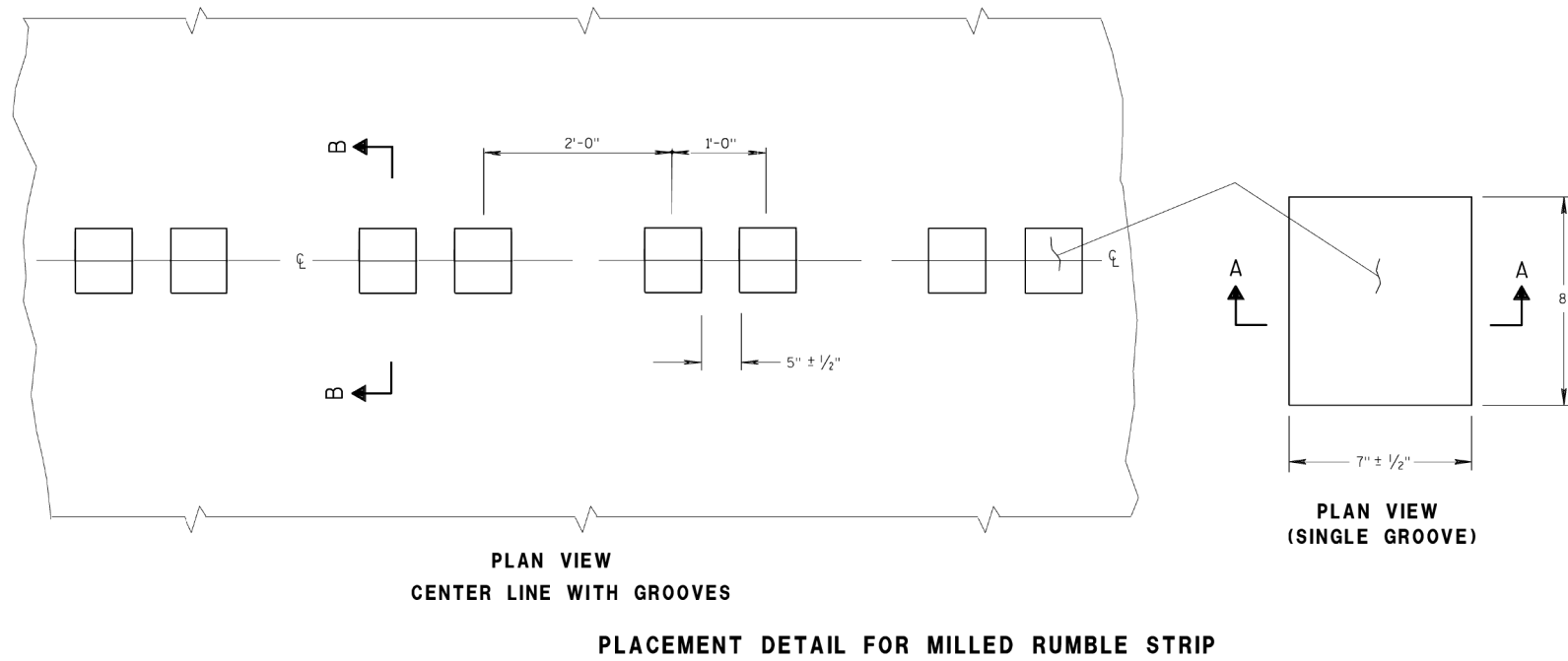
SCALE: SHEET OF SHEETS STA. TO STA.

F.A.P. RTE.	SECTION	COUNTY	TOTAL SHEETS	SHEET NO.
318	8RS-6RS-3.5RS-2.4RS-4.3RS-5	Peoria/Marshall	37	27
CONTRACT NO. 68D68				
ILLINOIS FED. AID PROJECT				

FOR INFORMATION ONLY

MODEL: Default
 FILE: \\snp\barcom\data\illinois\pww\DOT\Documents\DOT - Offices\Director - Projects\014_68D68\CADD\318\318.dwg Full Plans.dwg
 PLOT SCALE = 100,0000' / in.
 PLOT DATE = 5/31/2019

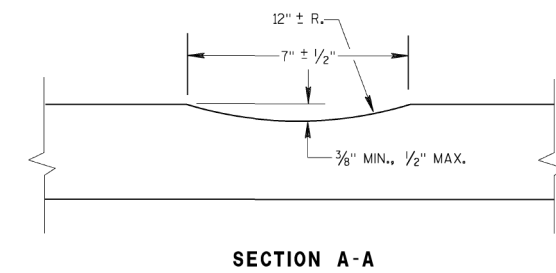
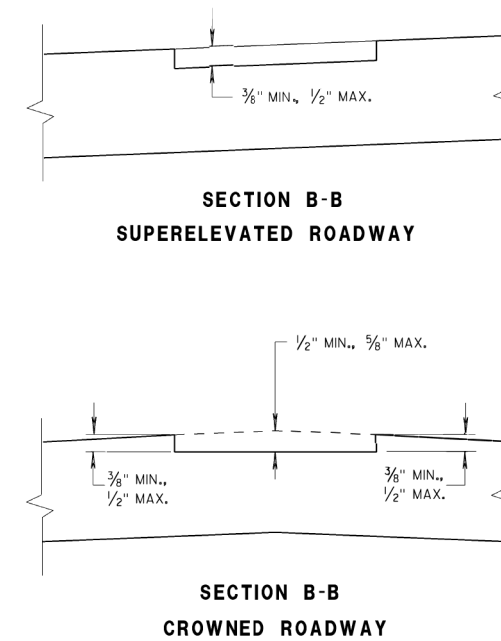
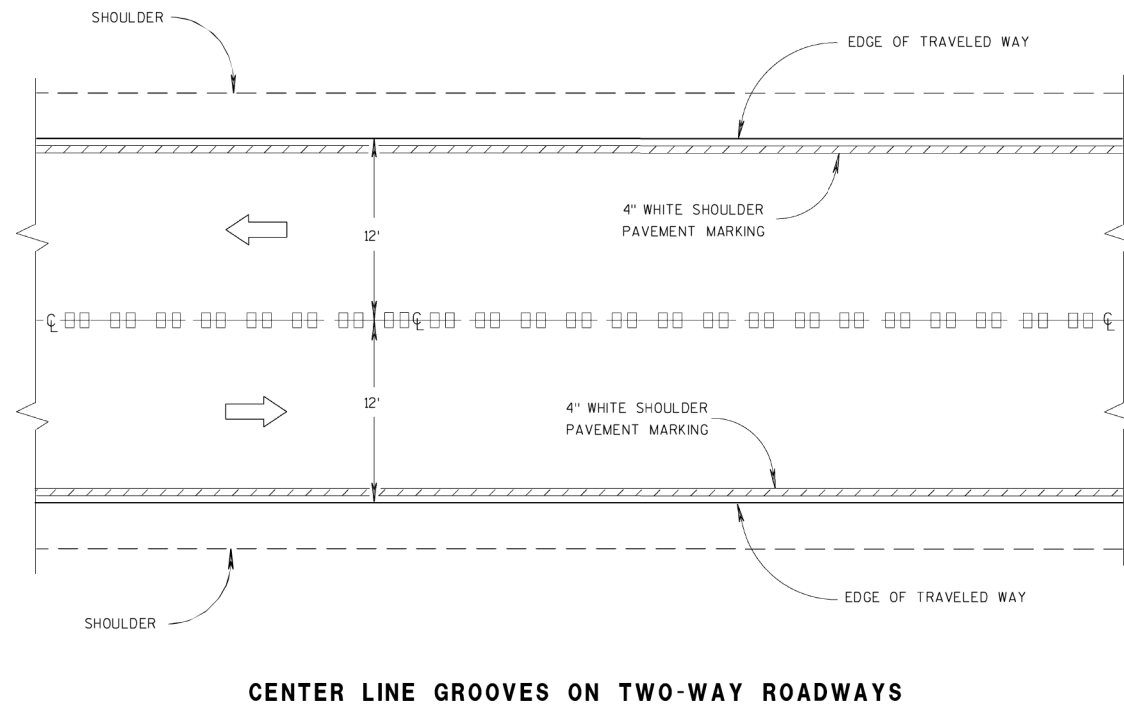
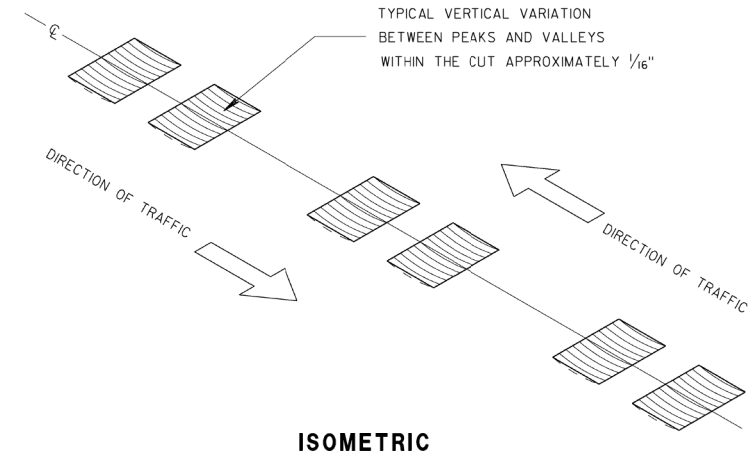
USER NAME = hudelsonme	DESIGNED -	REVISED -
	DRAWN -	REVISED -
	CHECKED -	REVISED -
	DATE -	REVISED -



GENERAL NOTES

DETAILS OF CONSTRUCTION SHOWN ON THIS DRAWING SHALL CONFORM TO THE PERTINENT REQUIREMENTS OF THE STANDARD SPECIFICATIONS AND APPLICABLE SPECIAL PROVISIONS.
DO NOT MILL CENTER LINE GROOVES THROUGH ANY INTERSECTION, MARKED CROSSWALK, OR NON-MOTORIZED PATH CROSSING.
INSTALL PERMANENT PAVEMENT MARKINGS AFTER THE GROOVES ARE INSTALLED.

① CENTERLINE GROOVES MAY BE OMITTED IN AREAS WITH HIGH CONCENTRATIONS OF DRIVEWAYS, WHEN DIRECTED BY THE ENGINEER.



MODEL: Default
FILE: h:\mhc\p\suplanroom.dwg
PROJECT: I:\DOT\Documents\DOT_Offices\Director\Projects\104_60681\CA\Drawings\CA\Drawings\10460688_Full Plans.dwg

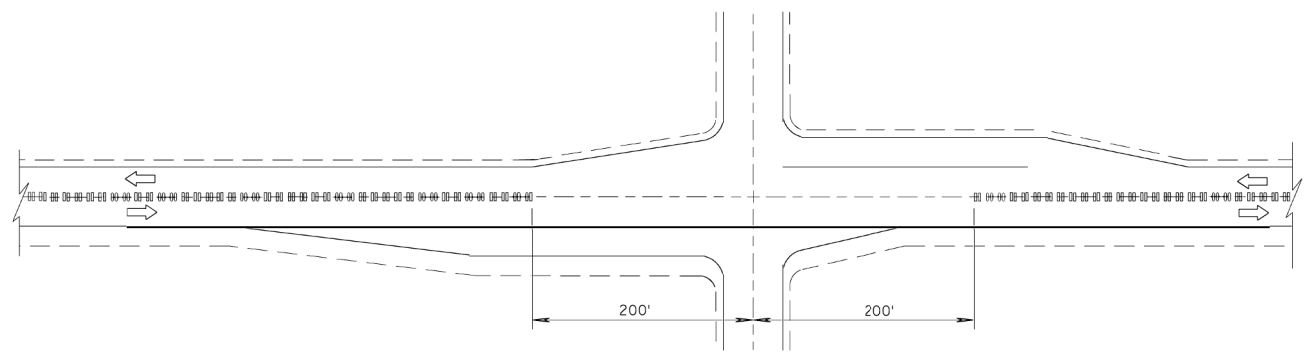
USER NAME = hudelsonme	DESIGNED -	REVISED -
	DRAWN -	REVISED -
PLOT SCALE = 100.0000' / in.	CHECKED -	REVISED -
PLOT DATE = 5/31/2019	DATE -	REVISED -

**STATE OF ILLINOIS
DEPARTMENT OF TRANSPORTATION**

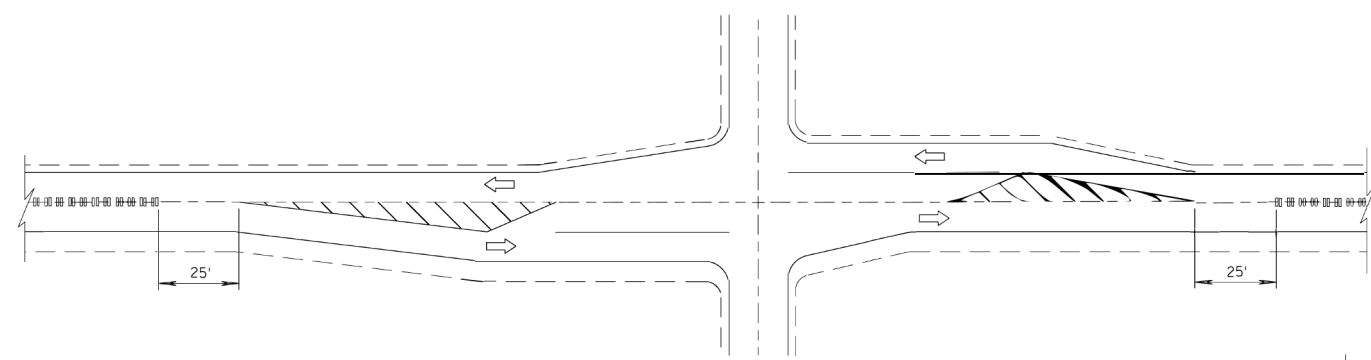
RUMBLE STRIP DETAILS

SCALE: SHEET OF SHEETS STA. TO STA.

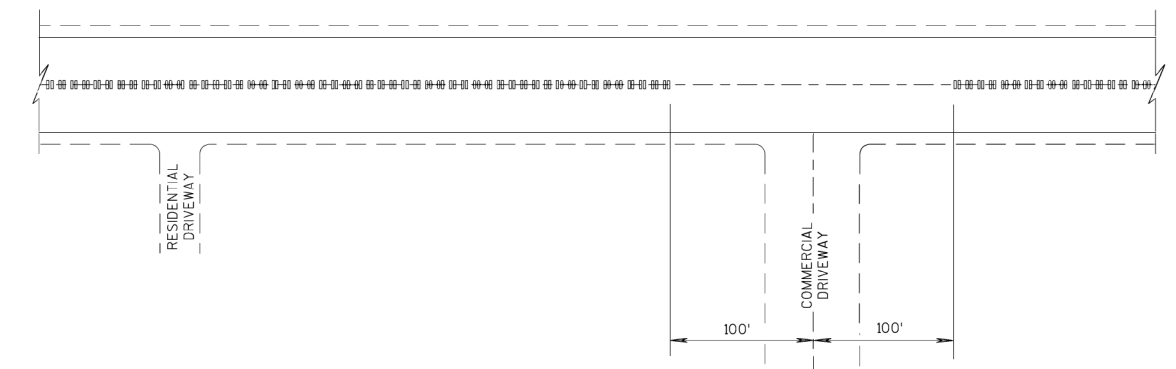
F.A.P. RTE.	SECTION	COUNTY	TOTAL SHEETS	SHEET NO.
318	8RS-6,6RS-3,5RS-2,4RS-4,3RS-5	Peoria/Marshall	37	28
CONTRACT NO. 68D68				
ILLINOIS FED. AID PROJECT				



CENTER LINE GROOVES AT INTERSECTIONS

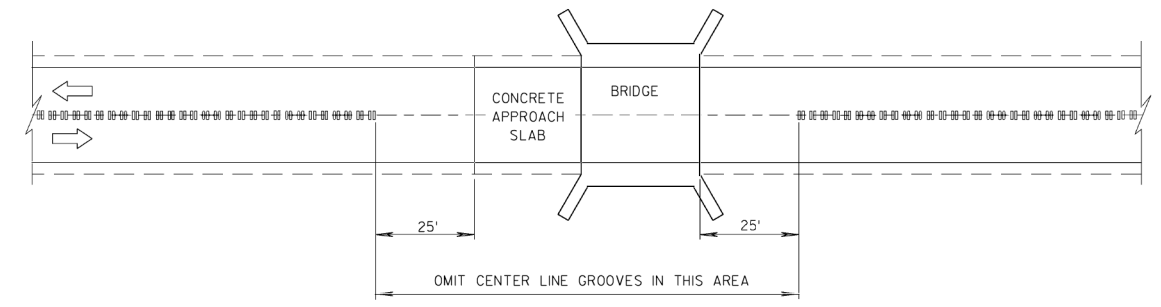


**CENTER LINE GROOVES AT INTERSECTIONS
(WITH LEFT TURN LANES)**

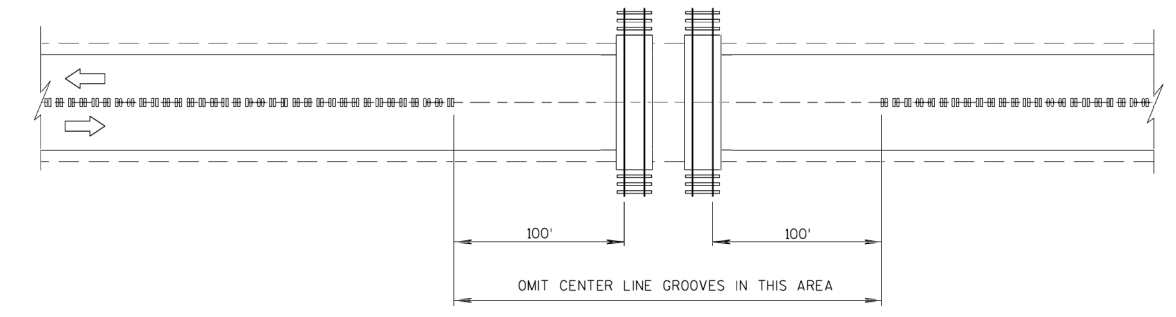


CENTER LINE GROOVES AT DRIVEWAYS

① CENTERLINE GROOVES MAY BE OMITTED IN AREAS WITH HIGH CONCENTRATIONS OF DRIVEWAYS, WHEN DIRECTED BY THE ENGINEER.



CENTER LINE GROOVES AT BRIDGES



CENTER LINE GROOVES AT RAILROADS

MODEL: Default
FILE: Model: P:\pub\haronm.dwt\illinois.gov\PWIDOT\Documents\DOT_Offices\Director\Projects\ID4_60D68\CAD\Drawings\CADsheets\68D68_Full Plans.dgn

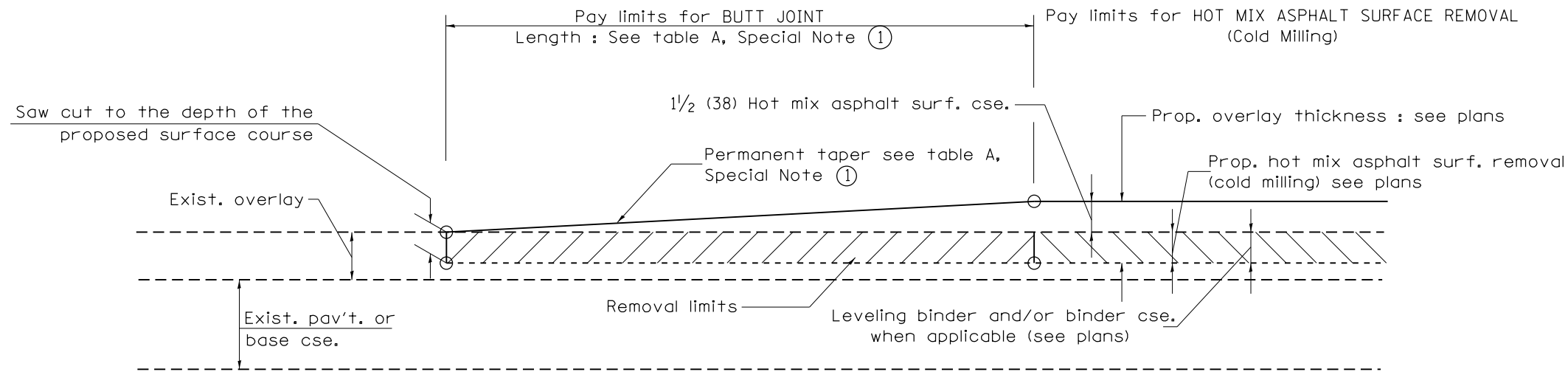
USER NAME = hudsonme	DESIGNED -	REVISED -
PLOT SCALE = 100.0000' / in.	DRAWN -	REVISED -
PLOT DATE = 5/31/2019	CHECKED -	REVISED -
	DATE -	REVISED -

**STATE OF ILLINOIS
DEPARTMENT OF TRANSPORTATION**

RUMBLE STRIP DETAILS

SCALE: SHEET OF SHEETS STA. TO STA.

F.A.P. RTE.	SECTION	COUNTY	TOTAL SHEETS	SHEET NO.
318	8RS-6,8RS-3,5RS-2,4RS-4,3RS-5	Peoria/Marshall	37	29
CONTRACT NO. 68D68				
ILLINOIS FED. AID PROJECT				



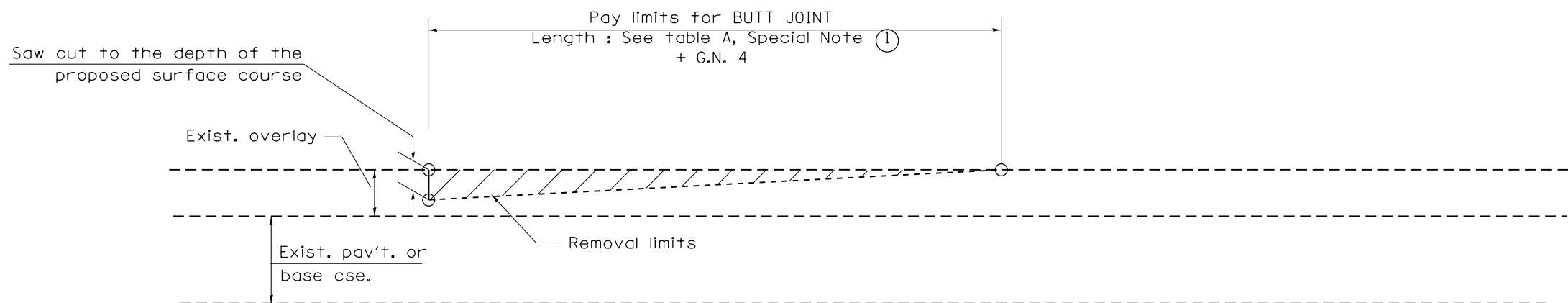
CASE 1 : WITH HOT MIX ASPHALT SURFACE REMOVAL (COLD MILLING)

**TABLE A
TAPER RATES**

SPECIAL NOTE NUMBER	ELEMENT	MAINLINE INTERSTATES & 4-LANE EXPRESSWAYS	ALL OTHERS
①	BUTT JOINT TAPER RATE	1:480	1:240
②	TEMPORARY RAMP TAPER RATE	1:80	1:40

GENERAL NOTES

1. The work shall be done in accordance with Article 406.08 and the Special Provision for Butt Joints.
2. The pavement surface to be removed may be either bituminous or P.C. concrete. The work shall be performed in accordance with Article 440.04 and the Special Provisions for Butt Joints.
3. The saw cut joints shall be primed just prior to the placing of bituminous material. The work will be in accordance with the applicable portions of Article 406.05.
4. The length of butt joint is based on the taper rate times change in cold milling depth within the butt joint pay limits, unless otherwise indicated.
5. Temporary ramps are paid for separately and not included in the cost of the butt joints.



CASE 2 : NO HOT MIX ASPHALT SURFACE REMOVAL (COLD MILLING)

All dimensions are in inches (millimeters) unless otherwise noted.

01-01-97	RENUM. C-23.01, NEW REVISION BOX	T.P.	08-21-13	MAJOR MODIFICATIONS	R.D.
04-01-97	CORRECTION TO DEPTH	J.A.	02-29-16	MINOR CORRECTIONS	R.D.
09-15-05	REVISED DESIGNER NOTE	M.M.A.	04-12-16	MINOR CORRECTIONS	R.D.
10-16-06	REVISED TO 2007 SPEC.	M.A.	02-14-17	ADDED NOTE 5	R.D.

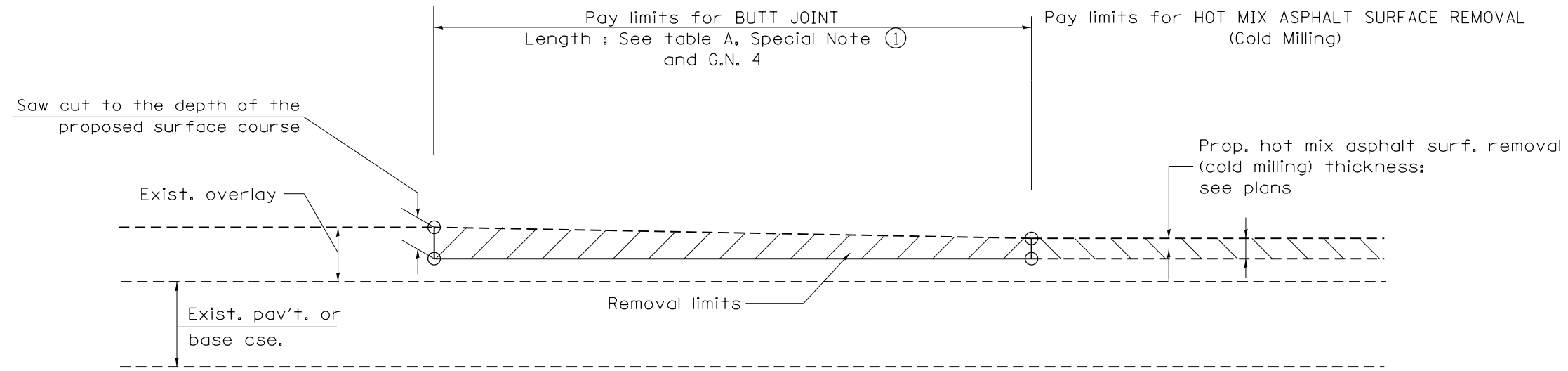
**STATE OF ILLINOIS
DEPARTMENT OF TRANSPORTATION**

BUTT JOINTS

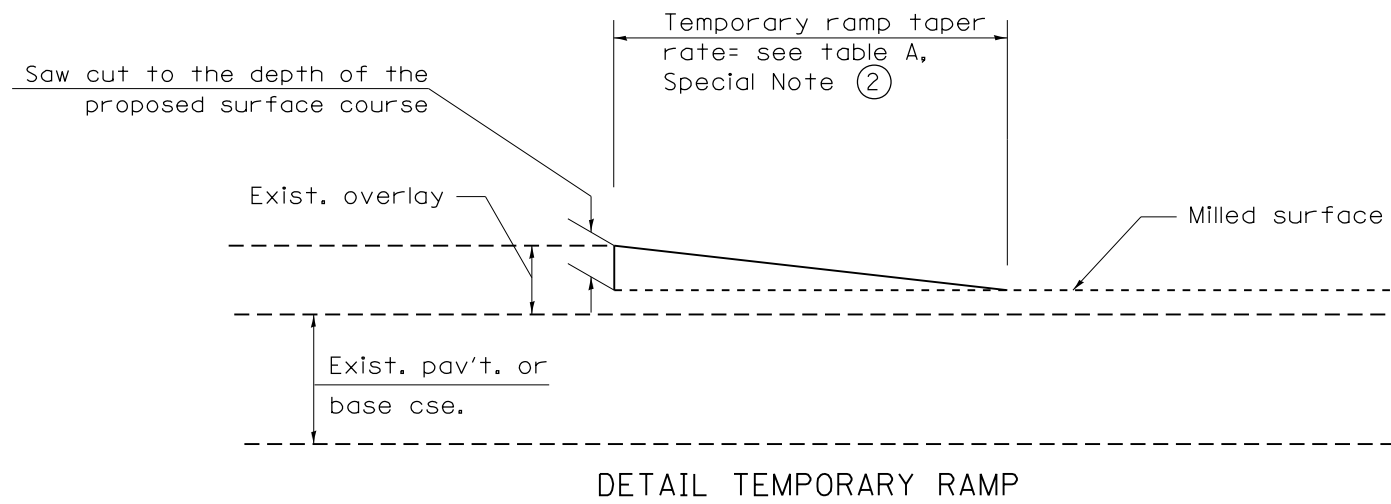
NOT TO SCALE

SHT. 1 OF 3
CADD STD. 406101-D4

F.A.P. RTE.	SECTION	COUNTY	TOTAL SHEETS	SHEET NO.
318	BRS-8,BRS-3,5RS-2,4RS-4,3RS-5	Peoria/Marshall	37	30
FED. ROAD DIST. NO. ILLINOIS FED. AID PROJECT			CONTRACT NO. 68D68	

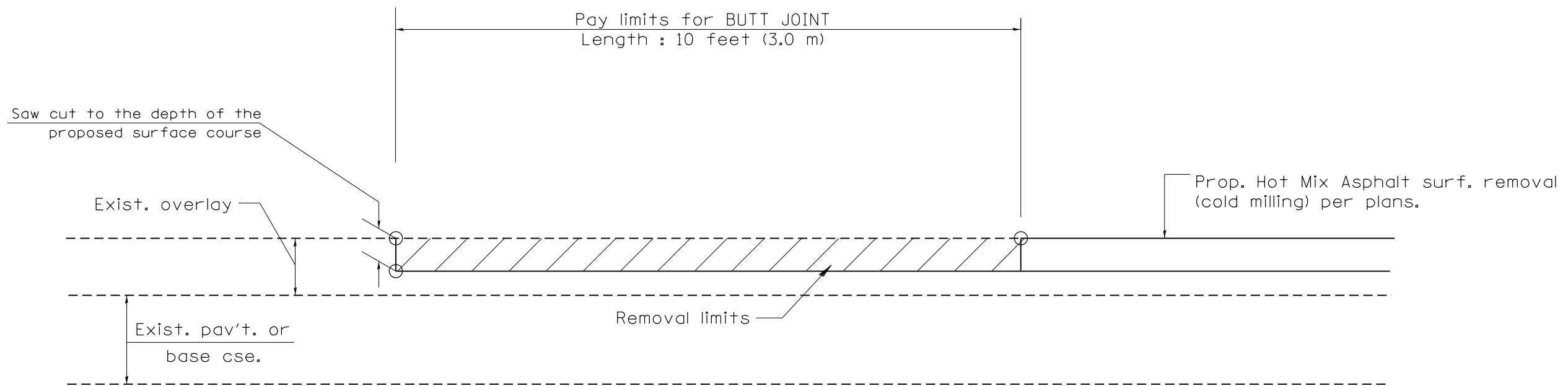


CASE 3 : HOT MIX ASPHALT SURFACE REMOVAL (COLD MILLING)
TIE-IN TO EXISTING BITUMINOUS TAPER



All dimensions are in inches (millimeters) unless otherwise noted.

				STATE OF ILLINOIS DEPARTMENT OF TRANSPORTATION		BUTT JOINTS		SHT. 2 OF 3 CADD STD. 406101-D4	
				NOT TO SCALE				CONTRACT NO. 68D68	
F.A.P. RTE.	SECTION	COUNTY	TOTAL SHEETS	SHEET NO.					
318	BRS-8,BRS-3,5RS-2,4RS-4,3RS-5	Peoria/Marshall	37	31					
FED. ROAD DIST. NO.		ILLINOIS FED. AID PROJECT							



CASE 4 : SINGLE LIFT OVERLAY WITH EQUIVALENT DEPTH
HOT MIX ASPHALT SURFACE REMOVAL (COLD MILLING)
TIE-IN TO EXISTING BITUMINOUS TAPER

All dimensions are in inches (millimeters) unless otherwise noted.

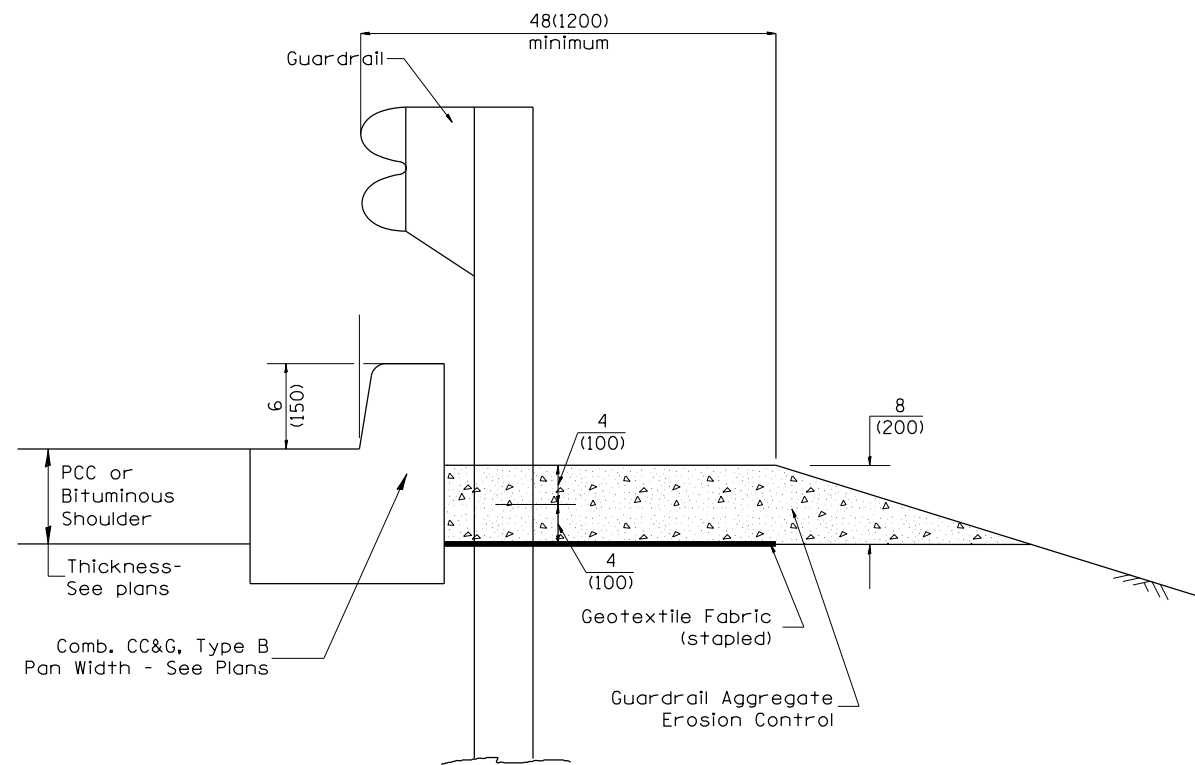
**STATE OF ILLINOIS
DEPARTMENT OF TRANSPORTATION**

BUTT JOINTS

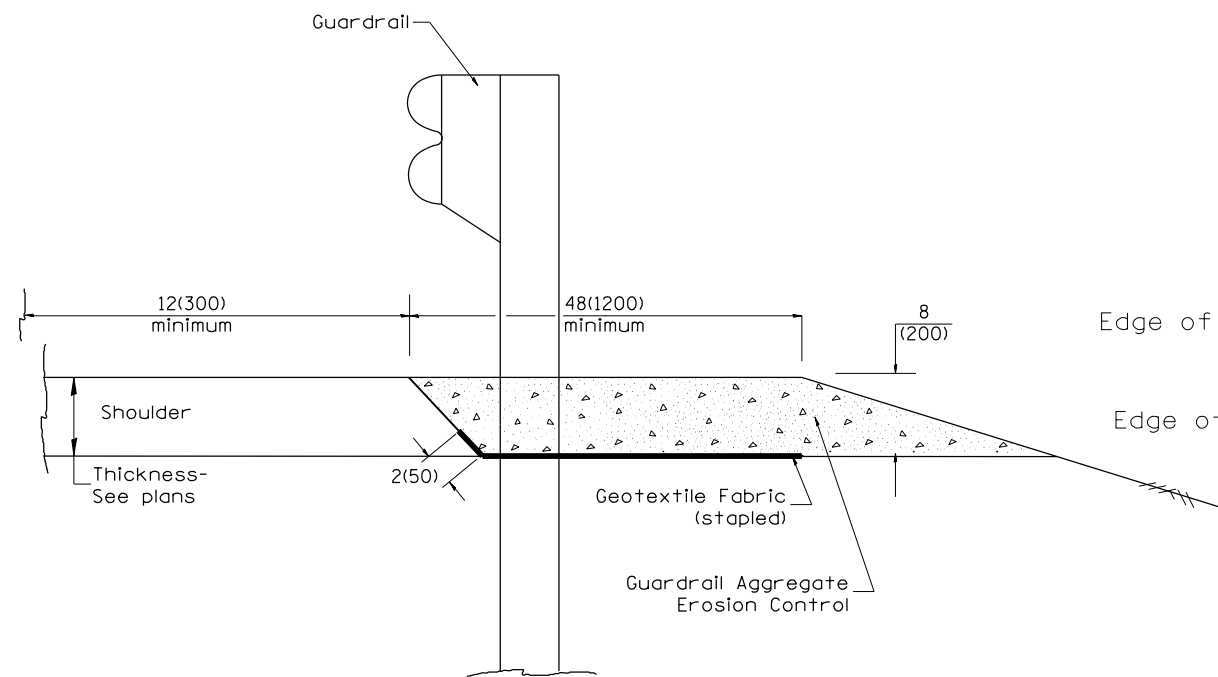
NOT TO SCALE

SHT. 3 OF 3
CADD STD. 406101-D4

F.A.P. RTE.	SECTION	COUNTY	TOTAL SHEETS	SHEET NO.
318	BRS-6,BRS-3,5RS-2,4RS-4,3RS-5	Peoria/Marshall	37	32
FED. ROAD DIST. NO. ILLINOIS FED. AID PROJECT			CONTRACT NO. 68D68	



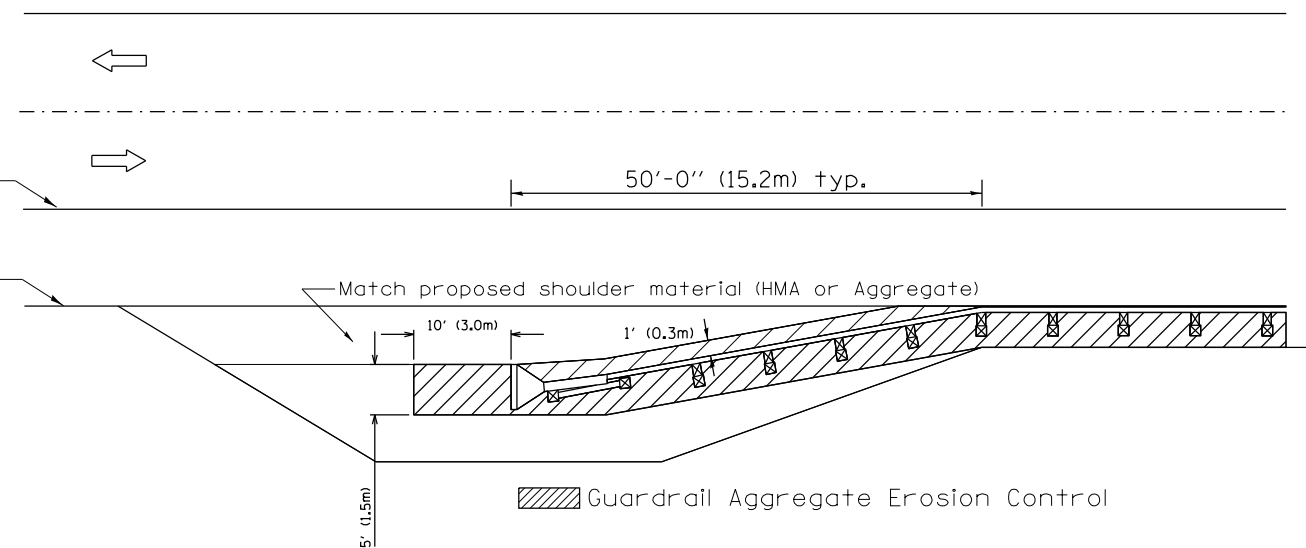
TYPICAL SECTION WITH COMBINATION CONCRETE CURB & GUTTER



TYPICAL SECTION WITHOUT EROSION CONTROL CURB

GENERAL NOTES: GUARDRAIL AGGREGATE EROSION CONTROL

1. This work shall consist of grading as needed, furnishing and installing geotextile fabric and staples, and furnishing, placing and shaping crushed aggregate around and behind Steel Plate Beam Guardrail posts in accordance with Plan Details.
2. Before placing the aggregate and the Geotextile Fabric, weeds and grass shall be removed from the area to be covered.
3. After the area has been prepared, and in a dry condition, the Geotextile fabric shall be placed with a 12(300) minimum overlap. A knife cut for guardrail post installation is necessary.
4. The aggregate shall be deposited, compacted and shaped by either mechanical or hand methods, in a manner reasonably true to line and grade.
5. The Contractor shall have the option of placing the guardrail before or after the Geotextile Fabric and Aggregate are in place. If the guardrail is placed after the Geotextile Fabric and Aggregate, then any voids must be filled and the aggregate returned to line and grade.
6. Materials shall meet the following requirements:
 - A. The crushed aggregate shall be CA1 gradation in accordance with Article 1004.01(c) of the Standard Specifications.
 - B. The Geotextile Fabric shall be nonwoven fabric in accordance with Article 1080.02 of the Standard Specifications.



All dimensions are in inches (millimeters) unless otherwise noted.

03-07-11	ADDED DETAIL SHOWING PLAN VIEW	R.D.	5-30-18	CHANGE B CURB TO CC&G	R.D.
08-10-12	REVISED CURB "B" AND AGGREGATE	R.D.			
07-15-15	ADDRESSED SHOULDER INLET CURB	R.D.			
01-26-17	REVISED	R.D.			

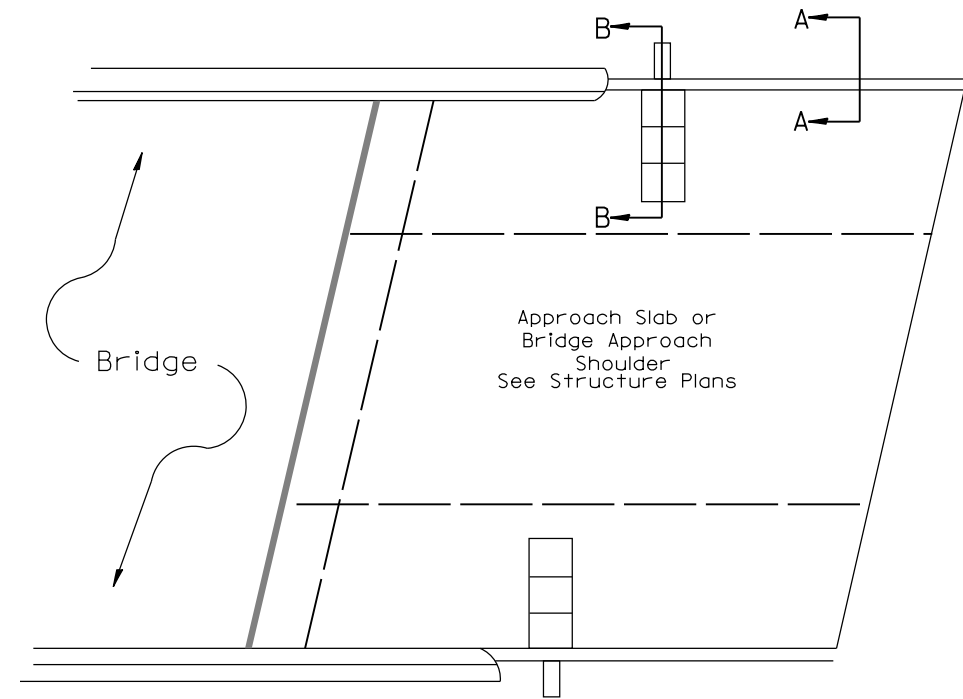
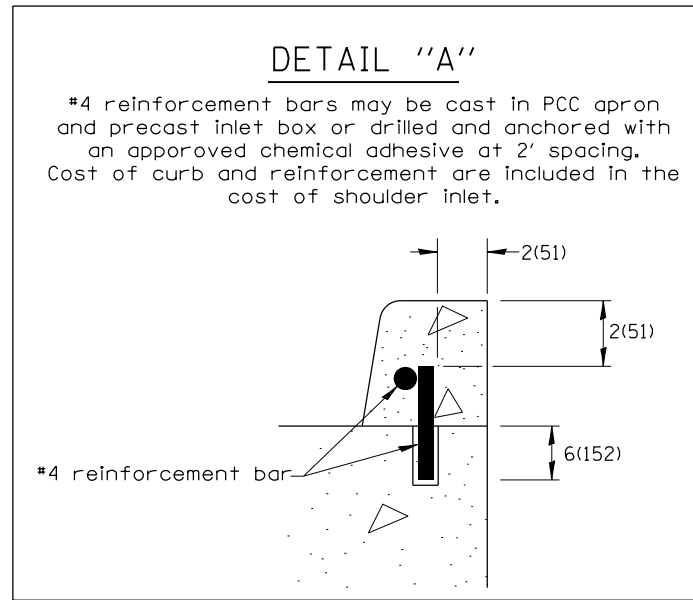
STATE OF ILLINOIS
DEPARTMENT OF TRANSPORTATION

NOT TO SCALE

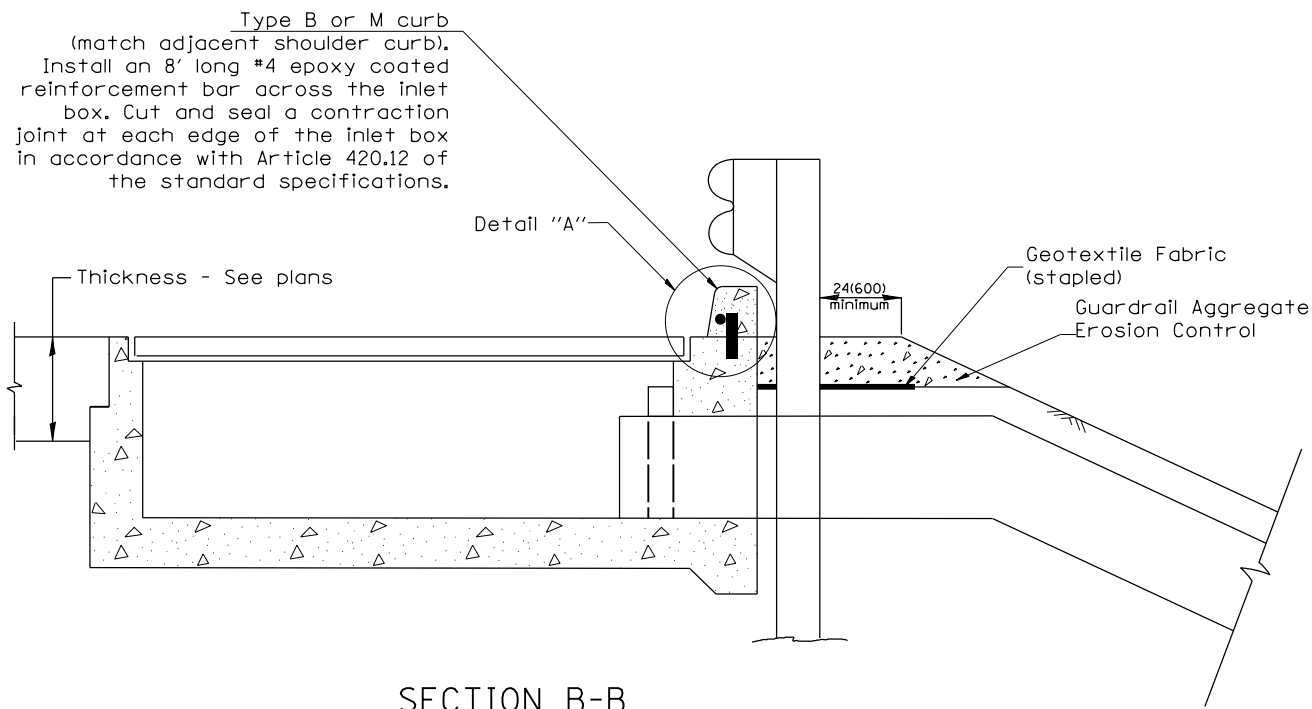
GUARDRAIL EROSION CONTROL TREATMENTS

SHT. 1 OF 2
CADD STD. 630101-D4

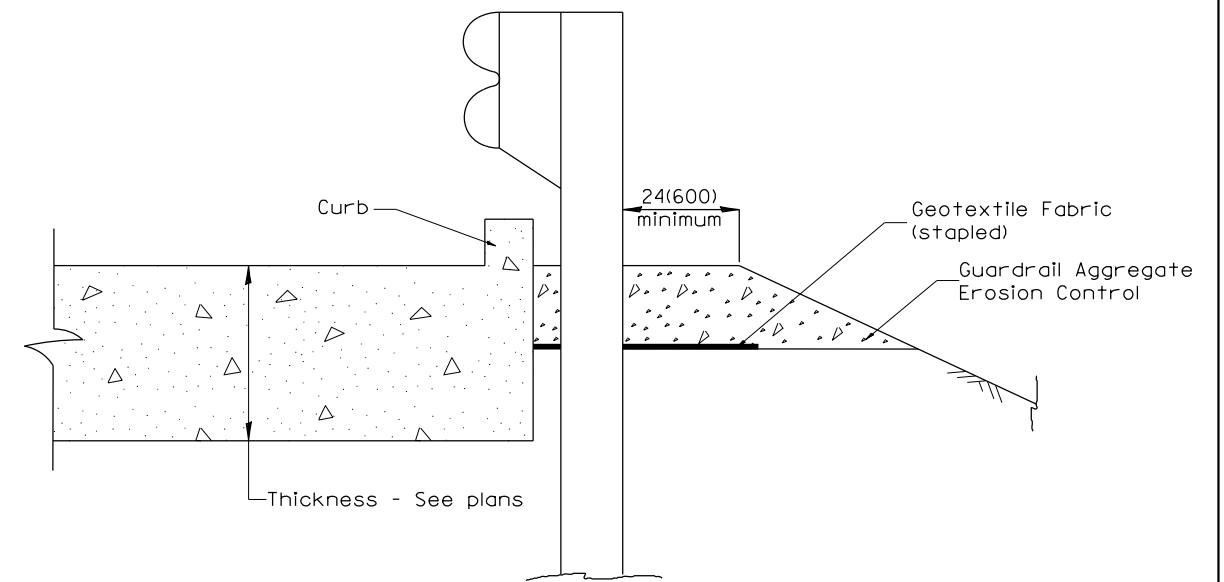
F.A.P. RTE.	SECTION	COUNTY	TOTAL SHEETS	SHEET NO.
318	8RS-8,6RS-3,5RS-2,4RS-4,3RS-5	Peoria/Marshall	37	33
FED. ROAD DIST. NO. ILLINOIS FED. AID PROJECT			CONTRACT NO. 68D68	



PLAN VIEW
APPROACH SLAB OR SHOULDER PLACEMENT



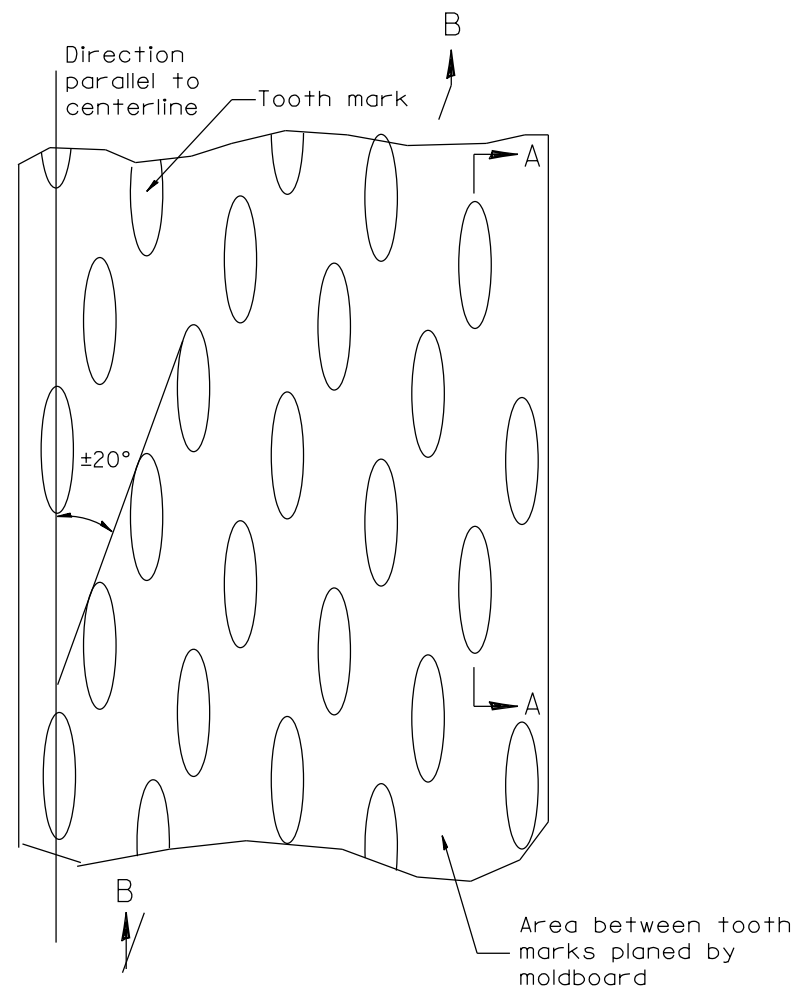
SECTION B-B
TYPICAL SECTION AT INLETS
TYPE E, F & G (HIGHWAY STANDARD 610001)



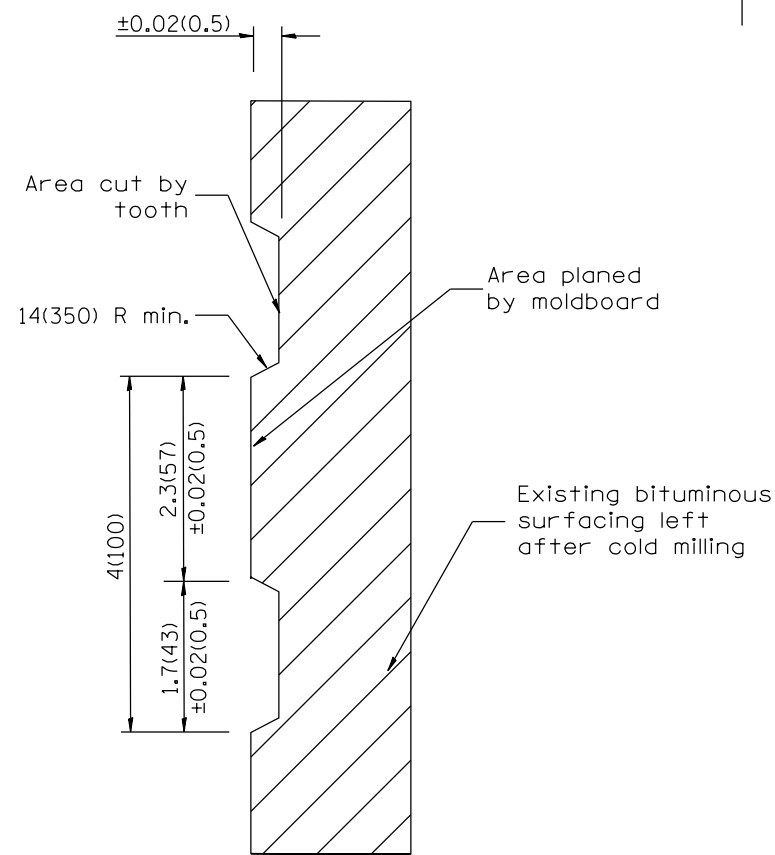
SECTION A-A
TYPICAL SECTION WITH BRIDGE APPROACH CURB

All dimensions are in inches (millimeters) unless otherwise noted.

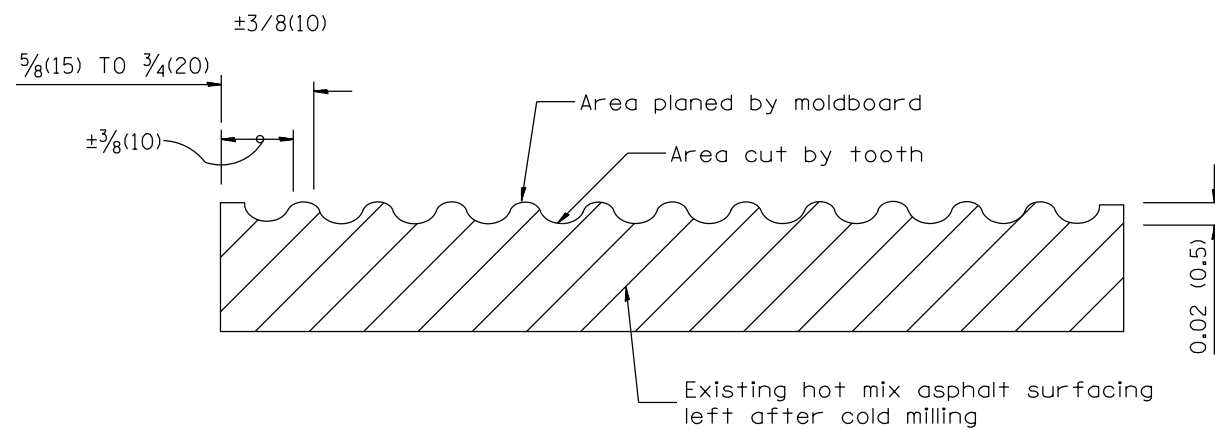
STATE OF ILLINOIS				GUARDRAIL EROSION CONTROL TREATMENTS				TOTAL SHEETS	SHEET NO.
DEPARTMENT OF TRANSPORTATION				NOT TO SCALE				37	34
				SHT. 2 OF 2				CONTRACT NO. 68D68	
				CADD STD. 630101-D4				ILLINOIS FED. AID PROJECT	



PLAN



SECTION A-A



SECTION B-B PROJECTED
PERPENDICULAR TO CENTERLINE

General notes:

1. Coldmilling shall consist of two processes: Cutting with carbide teeth mounted on a rotating drum, and planing with a moldboard mounted immediately behind the cutting drum.
2. Other similar patterns will be acceptable if they consist of a smooth, flat, planed surface interspersed with a pattern of discontinuous longitudinal striations.

All dimensions are in inches (millimeters) unless otherwise noted.

01-01-97	RENUM. C-104.01, NEW REVISION BOX	T.P.
04-20-98	REMOVED MILLING DETAIL FROM STANDARD	J.A.
09-08-98	CORRECT NOTE LEADER PLACEMENT	R.W.
10-16-06	REVISED TO 2007 SPEC.	M.A.

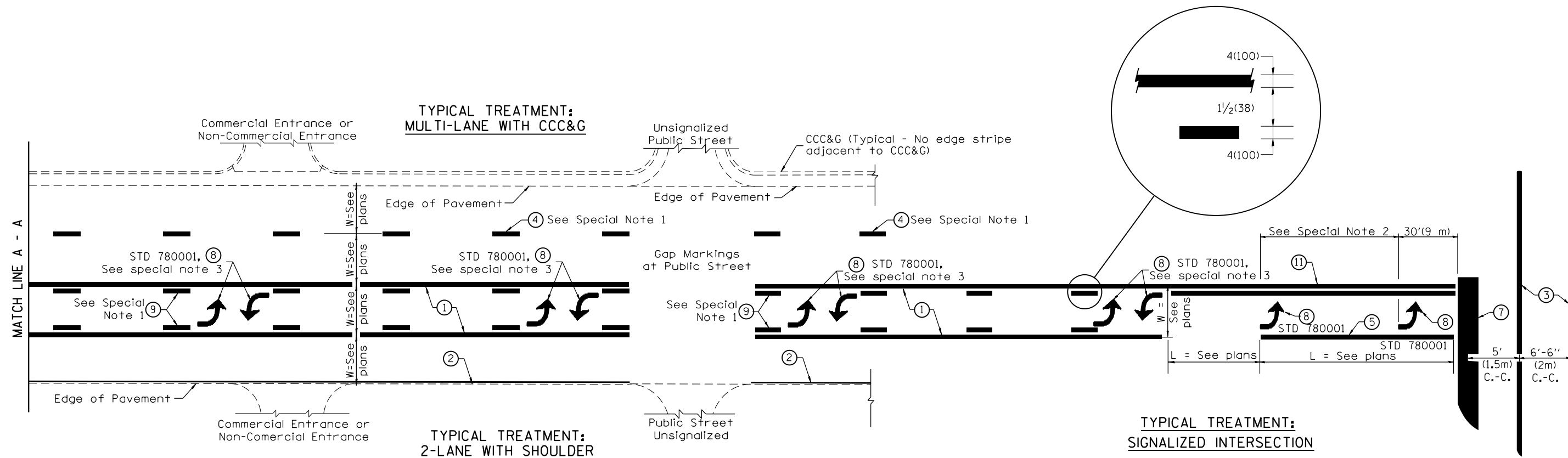
STATE OF ILLINOIS
DEPARTMENT OF TRANSPORTATION

HOT MIX ASPHALT SURFACE REMOVAL (COLD MILLING)

NOT TO SCALE

CADD STD. 440001-D4

F.A.P. RTE.	SECTION	COUNTY	TOTAL SHEETS	SHEET NO.
318	BRS-8,BRS-3,5RS-2,4RS-4,3RS-5	Peoria/Marshall	37	35
FED. ROAD DIST. NO. ILLINOIS FED. AID PROJECT			CONTRACT NO. 68D68	



FLUSH PAVED MEDIAN: TWO-WAY LEFT TURN LANE WITH ONE-WAY LEFT TURN LANE AT SIGNALIZED INTERSECTION

TYPICAL PAVEMENT MARKING LEGEND

(Note: This is a District Standard Legend. Some elements may not apply to specific project.)

- ① 4(100) Solid (Yellow)
- ② 4(100) Solid (White)
- ③ 2-6(150) Crosswalk @ 6'-6" (2m)min C.-C. (White)
2-8(200) Crosswalk @ 6'-6" (2m)min C.-C. (White) (When traffic signals are present.)
- ④ 6(150) Skip-Dash (White) (See Special Note 1)
- ⑤ 8(200) Solid (White)
- ⑥ 12(300) Diagonal (White) (Item ⑥ is shown on Std. 780001)
- ⑦ 24(600) Stop Bar (White)
- ⑧ Letters & Arrows (See Std. 780001 and Special Notes 2 & 3)
- ⑨ 4(100) Skip-Dash (Yellow) (See Special Note 1)
- ⑩ 12(300) Diagonal (Yellow) (See Table A) ⑩
- ⑪ 4(100) Double Solid (Yellow) ⑪

SPECIAL NOTES

1. Skip-Dash markings will be centered between both ends of city blocks and shall be placed in alignment transversely across the pavement.
2. The following shall apply to arrows located in one-way left turn lanes:
 - A. A minimum of two (2) arrows is required.
 - B. The maximum spacing between arrows is 80' (24 m).
 - C. Arrows shall be evenly spaced if three (3) or more are required.
3. The following shall apply to arrow pairs located in two-way left turn lanes:
 - A. A minimum of two (2) arrow pairs is required.
 - B. The maximum spacing between arrow pairs is 200' (61 m).
 - C. Arrow pairs shall be evenly spaced if three (3) or more are required.
 - D. The spacing between Bi Directional Left Turn Arrows is 33' (10 m).

GENERAL NOTES

1. Refer to State Standard 780001 for additional Pavement Markings including letters & arrows.
2. See Plans for Pavement Markings adjacent to curbed islands and medians, and through lane reductions.
3. Refer to Article 780.13 for letter, number and symbol areas (sq. ft.)
4. Areas are grooved 1" beyond each edge for the following symbols:
 - Through Arrow= 14.8 sq. ft.
 - Large Left or Right Arrow= 21.9 sq. ft.
 - 2 Arrow Combination Left (or Right) and Through= 34.9 sq. ft.
 - Wrong Way Arrow= 29.5 sq. ft.
 - Railroad Crossing Symbol= 69.8 sq. ft.
 (For further information, refer to BDE Special Provision: Grooving for Recessed Pavement Markings)

01-01-97	RENUM. F-8.03, NEW REVISION BOX	T.P.	10-16-06	REVISED TO 2007 SPEC.	
02-07-97	ADD BI DIRECTIONAL DIMENSION	J.A.	2/29/16	ADDED GROOVING AREAS	R.D.
10-97	CORRECT BI DIRECTIONAL DIMENSION	J.A.			
08-02	ADD CROSSWALK DMNS. WITH T.S.	M.A.			

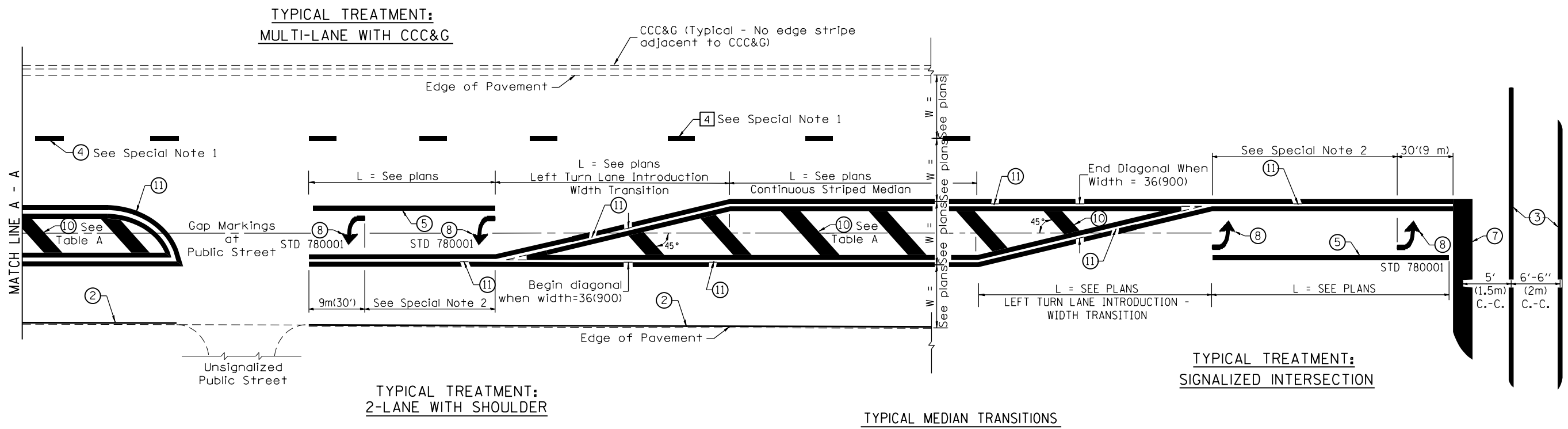
**STATE OF ILLINOIS
DEPARTMENT OF TRANSPORTATION**

TYPICAL PAVEMENT MARKINGS

NOT TO SCALE

SHT. 1 OF 2
CADD STD. 780001-D4

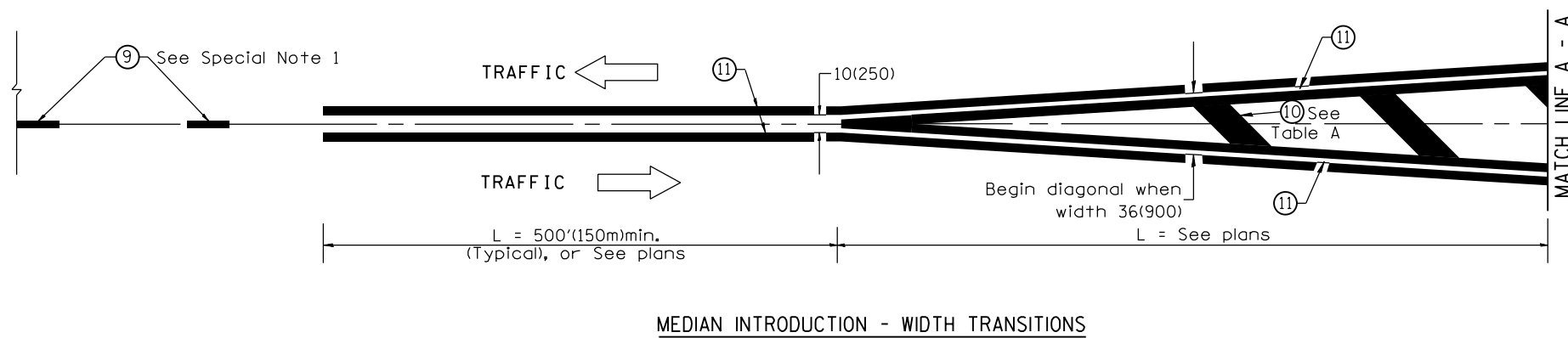
F.A.P. RTE.	SECTION	COUNTY	TOTAL SHEETS	SHEET NO.
318	BRS-8,BRS-3,5RS-2,4RS-4,3RS-5	Peoria/Marshall	37	36
FED. ROAD DIST. NO. ILLINOIS FED. AID PROJECT			CONTRACT NO. 68D68	



FLUSH PAVED MEDIAN: RESTRICTED LEFT TURN LANE

TABLE A
RECOMMENDED SPACING BETWEEN DIAGONAL LINES

SPEED LIMIT RANGE	INTERSECTION CHANNELIZATION (Includes Width Transitions for Median and Left Turn Lane Introductions)	
	CONTINUOUS	
Less Than 30 mph (50 km/h)	50' (15m)	15' (5m)
30 - 45 mph (50 - 70 km/h)	75' (23m)	20' (6m)
Over 45 mph (70 km/h)	150' (46m)	30' (9m)



All dimensions are in inches (millimeters) unless otherwise noted.