

CODE NO.	ITEM	UNIT	TOTAL QUANTITY	CONSTR. CODE	
				80% FED	20% STATE
				BRIDGE	
				0047	SN 094-0028
28100127	STONE RIPRAP, CLASS B4	SQ YD	225.6	225.6	
28200200	FILTER FABRIC	SQ YD	225.6	225.6	
40600295	POLYMERIZED BITUMINOUS MATERIALS (TACK COAT)	POUND	1403	1403	
40604060	HOT-MIX ASPHALT SURFACE COURSE, 1L-9.5, MIX "D", N50	TON	144	144	
44003100	MEDIAN REMOVAL	SQ FT	1527	1527	
48203029	HOT-MIX ASPHALT SHOULDERS, 8"	SQ YD	300.6	300.6	
50102400	CONCRETE REMOVAL	CU YD	10.3	10.3	
50300225	CONCRETE STRUCTURES	CU YD	16.3	16.3	
50300255	CONCRETE SUPERSTRUCTURE	CU YD	11	11	
50300300	PROTECTIVE COAT	SQ YD	86	86	
50500405	FURNISHING AND ERECTING STRUCTURAL STEEL	POUND	3830	3830	
50800205	REINFORCEMENT BARS, EPOXY COATED	POUND	5620	5620	
50800515	BAR SPLICERS	EACH	20	20	
52000110	PREFORMED JOINT STRIP SEAL	FOOT	131	131	
52100010	ELASTOMERIC BEARING ASSEMBLY, TYPE I	EACH	18	18	

1

MODEL: Default  
FILE: M:\GIS\Projects\68G71\CADD\Drawings\DOT\_Offices\Drawings\68G71\CADD\Drawings\CAD\Drawings\68G71-1-18-500.dgn

USER NAME = \$USERS	DESIGNED -	REVISED -
	DRAWN -	REVISED -
PLOT SCALE = 1:100	CHECKED -	REVISED -
PLOT DATE = 4/21/2022	DATE -	REVISED -

**STATE OF ILLINOIS  
DEPARTMENT OF TRANSPORTATION**

**SUMMARY OF QUANTITIES**

SCALE: SHEET OF SHEETS STA. TO STA.

F.A.P. RTE.	SECTION	COUNTY	TOTAL SHEETS	SHEET NO.
313	(94-16HB-1)BDR,BJR,BRR	WARREN	29	4
			CONTRACT NO. 68G71	
ILLINOIS FED. AID PROJECT				

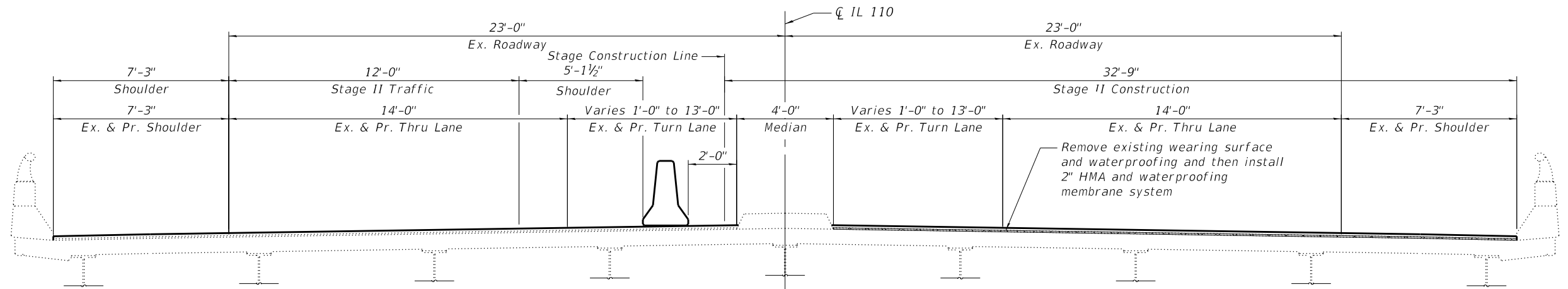
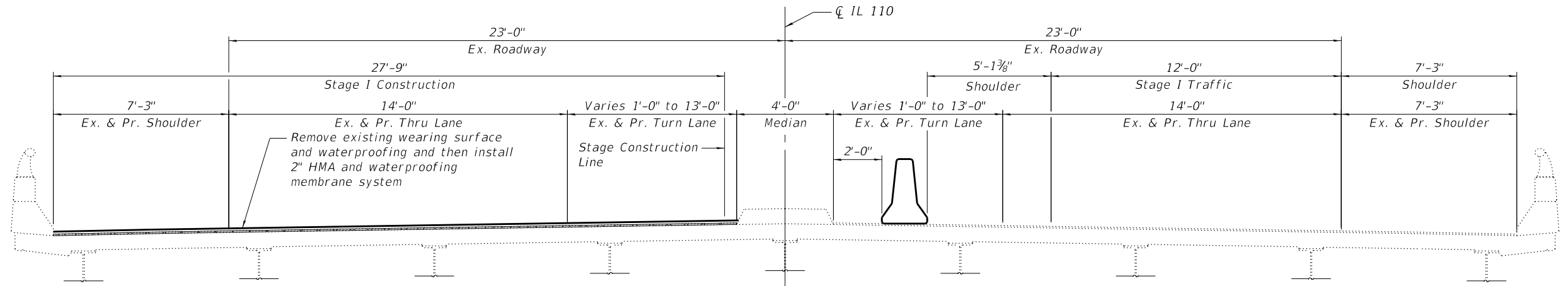
**GENERAL NOTES**

1. Reinforcement bars designated (E) shall be epoxy coated.
2. All heavy or loose rust, loose mill scale, and other loose or potentially detrimental foreign material shall be removed from the surfaces in contact with concrete. Tightly adhered paint may remain unless otherwise noted. Removal shall be accomplished by methods that will not damage the steel and the cost will be included in the pay item covering removal of the existing concrete.
3. Plan dimensions and details relative to existing plans are subject to nominal construction variations. The Contractor shall field verify existing dimensions and details affecting new construction and make necessary approved adjustments prior to construction or ordering of materials. Such variations shall not be cause for additional compensation for a change in scope of the work, however, the Contractor will be paid for the quantity actually furnished at the unit price bid for the work.
4. Joint openings shall be adjusted according to Article 520.04 of the Standard Specifications at ambient temperature other than 50°F.
5. Quantity of Deck Slab Repair (Partial) shown on the plans is an estimate based on existing conditions at the time of the estimate. Final quantities shall be determined by the Engineer in the field.
6. All exposed concrete edges shall have a standard 3/4" chamfer unless noted otherwise.
7. After the initial 0.08 lb/sf of residual tack coat has been applied to the surface of the waterproofing membrane system, a second tack coat application of 0.08 lb/sf shall be applied in a 2' strip along the parapets and median curbs such that the coverage extends up the vertical faces approximately 4 inches.
8. The existing structural steel coating contains lead. The Contractor shall take appropriate precautions to deal with the presence of lead on this project.
9. All structural steel shall conform to AASHTO Classification M-270 Gr. 36, unless otherwise noted.
10. Fasteners shall be high strength bolts. Bolts 3/4" diameter, open holes 13/16" diameter, unless otherwise noted.

**TOTAL BILL OF MATERIAL**

ITEM	UNIT	SUPER	SUB	TOTAL
Polymerized Bituminous Materials (Tack Coat)	Pound	1,403		1,403
Hot-Mix Asphalt Surface Course, IL-9.5, Mix "D", N50	Ton	144		144
Concrete Removal	Cu. Yd.	10.3		10.3
Concrete Structures	Cu. Yd.		16.3	16.3
Concrete Superstructure	Cu. Yd.	11		11
* Protective Coat	Sq. Yd.	36	50	86
Furnishing and Erecting Structural Steel	Pound	3,830		3,830
Reinforcement Bars, Epoxy Coated	Pound	4,050	1,570	5,620
Preformed Joint Strip Seal	Foot	131		131
Elastomeric Bearing Assembly, Type I	Each	18		18
Anchor Bolts, 1"	Each	36		36
Waterproofing Membrane System	Sq. Yd.	1,706		1,706
Jack and Remove Existing Bearings	Each	18		18
Hot-Mix Asphalt Surface Removal (Deck)	Sq. Yd.	1,841		1,841
Structural Repair of Concrete (Depth Equal to or Less Than 5 Inches)	Sq. Ft.		32	32
Deck Drain Extensions	Each	16		16
Plug Existing Deck Drains	Each	8		8
Deck Slab Repair (Partial)	Sq. Yd.	60		60
Bar Splicers	Each	20		20

\* On new concrete only



MODEL: Default  
FILE NAME: P:\19-1139.13 CH15 Bridge Rehab\0\_IDOT\Structures\0940028-68G71-002-General Data.dgn

**Kaskaskia**  
Engineering Group, LLC  
Professional Engineering Group

288 E. Main St., Suite 300  
Bella Vista, Illinois 62226  
618.233.2877 phone  
618.233.2977 fax  
www.kaskaskiaeng.com

11/27/2022  
11/28/2022  
20-088266

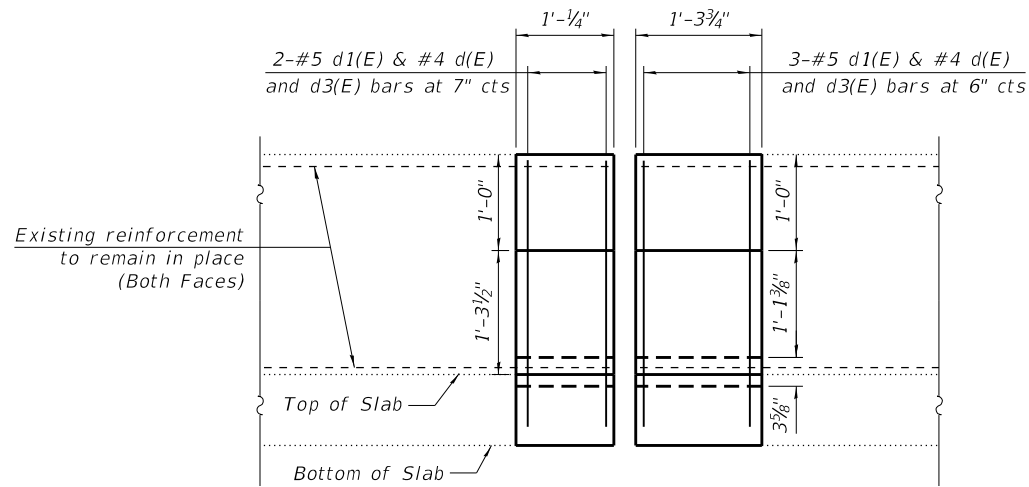
USER NAME =	DESIGNED - MLC	REVISED 1 7/05/2022 JW
	CHECKED - JW	REVISED -
PLOT SCALE =	DRAWN - MLC	REVISED -
PLOT DATE =	CHECKED - JW	REVISED -

**STATE OF ILLINOIS**  
**DEPARTMENT OF TRANSPORTATION**

**GENERAL DATA**  
**STRUCTURE NO. 094-0028**

SHEET 2 OF 14 SHEETS

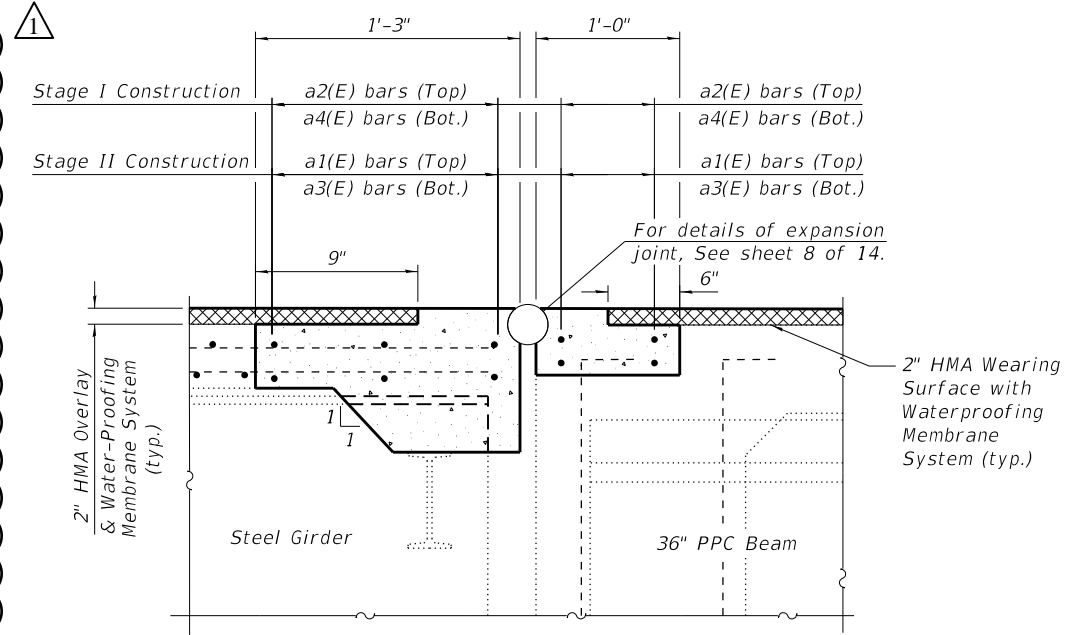
F.A.P. RTE.	SECTION	COUNTY	TOTAL SHEETS	SHEET NO.
313	(94-16HB-1)BDR,BJR,BRR	WARREN	29	15
CONTRACT NO. 68G71				
ILLINOIS FED. AID PROJECT				



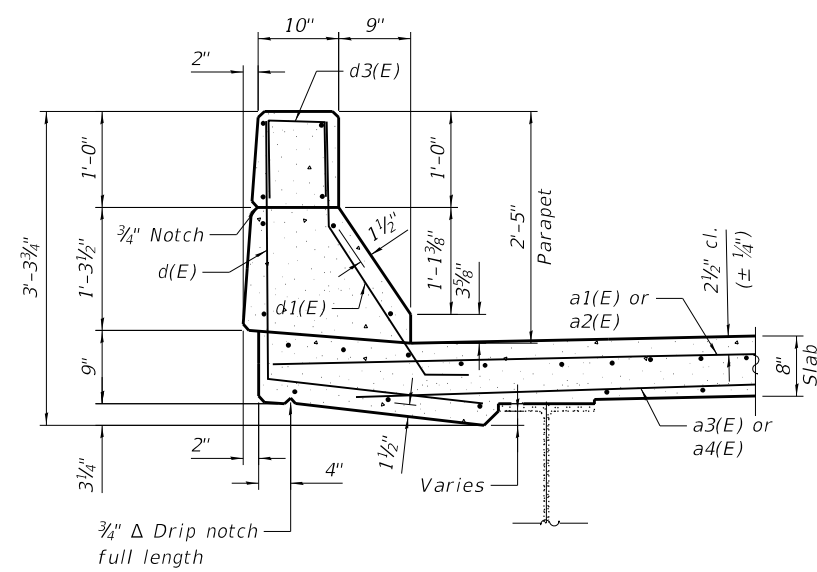
**Outside Elevation**  
(East Parapet - South Abutment shown, others similar)

**BILL OF MATERIAL**

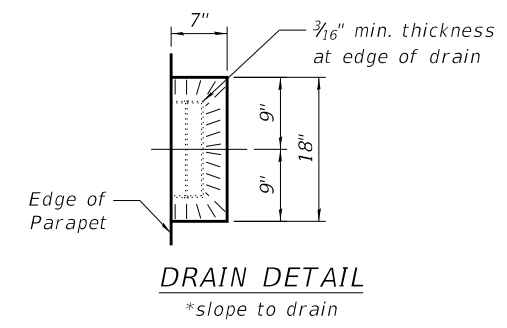
Bar	No.	Size	Length	Shape
a1(E)	20	#6	34'-9"	—
a2(E)	20	#6	29'-8"	—
a3(E)	20	#6	33'-9"	—
a4(E)	20	#6	28'-8"	—
c(E)	16	#5	2'-11"	┘
c1(E)	8	#5	3'-0"	—
d(E)	20	#4	4'-5"	┘
d1(E)	20	#5	3'-7"	┘
d3(E)	20	#4	2'-1"	┘
Concrete Superstructure	Cu. Yd.	11.0		
Reinforcement Bars, Epoxy Coated	Pound	4,050		
Hot-Mix Asphalt Surface Course, 1L-9.5, Mix "D", N50	Ton	144		
Polymerized Bituminous Materials (Tack Coat)	Pound	1,403		
Bar Splicers	Each	20		



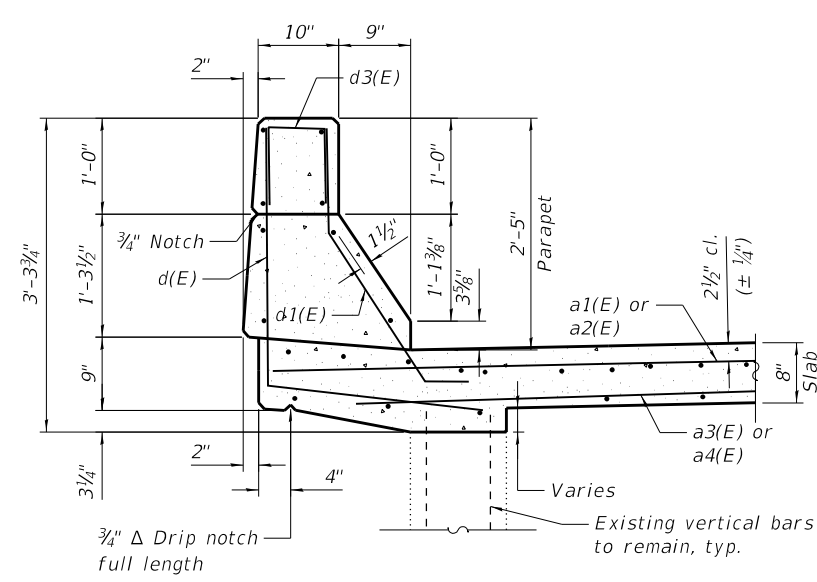
**SECTION A-A**  
(at right angle)



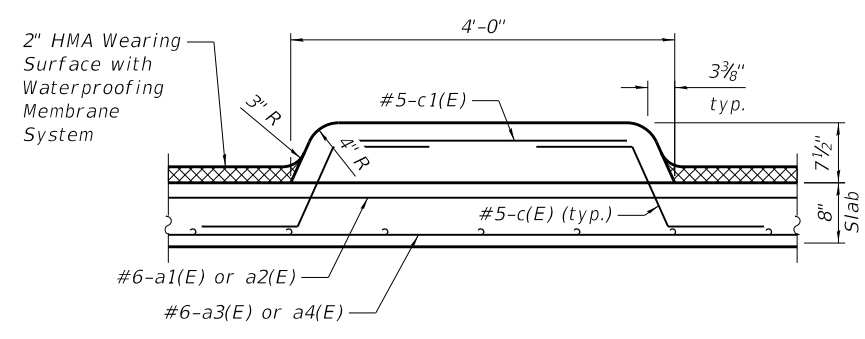
**SECTION THRU MAIN SPAN PARAPET**



**DRAIN DETAIL**  
\*slope to drain

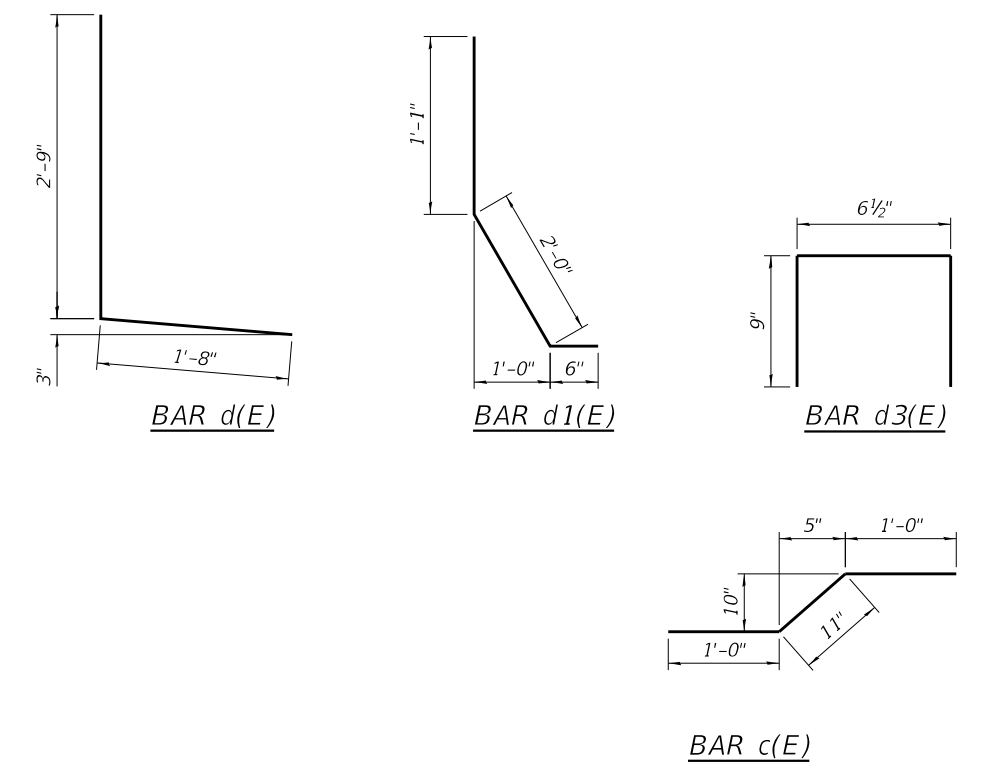


**SECTION THRU APPROACH SPAN PARAPET**



**SECTION THRU MEDIAN**

Note:  
Existing reinforcement bars extending into the removal area shall be cleaned, straightened, and incorporated into new construction. Any reinforcement bars that are damaged during concrete removal operations shall be replaced at the Contractor's expense.



MODEL: Default  
FILE NAME: P:\19-1139.13 CH15 Bridge Rehab\0\_IDOT\Structures\0940028-68G71-006-Superstructure\_Details.dgn

**Kaskaskia**  
Engineering Group, LLC  
Professional Engineering Firm  
1127 N. Main St., Suite 200  
Moline, IL 61401  
662.233.2877  
www.kaskaskiaeng.com

USER NAME =	DESIGNED - MLC	REVISED 1 7/05/2022 JW
PLOT SCALE =	CHECKED - JW	REVISED -
PLOT DATE =	DRAWN - MLC	REVISED -
	CHECKED - JW	REVISED -

**STATE OF ILLINOIS**  
**DEPARTMENT OF TRANSPORTATION**

**SUPERSTRUCTURE DETAILS**  
**STRUCTURE NO. 094-0028**

SHEET 6 OF 14 SHEETS

F.A.P. RTE.	SECTION	COUNTY	TOTAL SHEETS	SHEET NO.
313	(94-16HB-1)BDR,BJR,BRR	WARREN	29	19
CONTRACT NO. 68G71				
ILLINOIS FED. AID PROJECT				