

F. A. U. R.T.E.	SECTION	COUNTY	TOTAL SHEETS	SHEET NO.
3751	13-00050-00-BT	WILL	23	01
STA.		TO STA.		
FED. ROAD DIST. NO. 1	ILLINOIS	FED. AID PROJECT	CMM-4003(307)	

CONTRACT #61B46

INDEX OF SHEETS

- COVER SHEET, INDEX OF SHEETS & STATE STANDARDS
- SUMMARY OF QUANTITIES
- GENERAL NOTES
- ALIGNMENT, TIES AND BENCHMARKS
- TYPICAL CROSS SECTIONS
- 6.-7. PLAN & PROFILE SHEETS
8. STORM WATER POLLUTION PREVENTION PLAN
9. CONSTRUCTION DETAILS
- 10.-22. CROSS SECTIONS
- 23.-23A. IDOT DISTRICT 1 STANDARD DETAILS

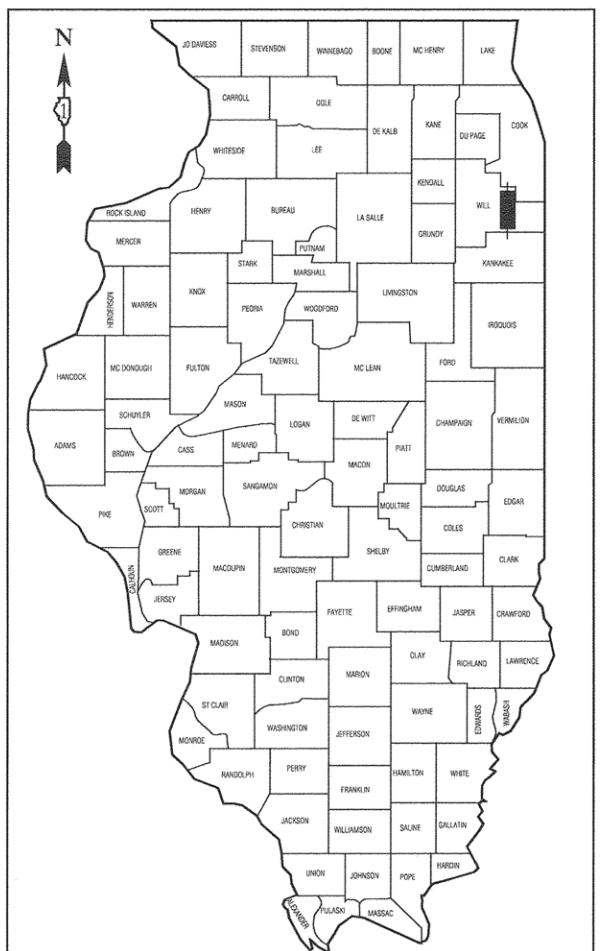
HIGHWAY STANDARDS

000001-06	STANDARD SYMBOLS, ABBREVIATIONS, AND PATTERNS
424001-08	PERPENDICULAR CURB RAMPS FOR SIDEWALKS
542401-02	METAL END SECTION FOR PIPE CULVERTS
701001-02	OFF-RD OPERATIONS, 2L, 2W, MORE THAN 15' (4.5m) AWAY
701006-05	OFF-RD OPERATIONS, 2L, 2W, 15' (4.5m) TO 24" (600 mm) FROM PAVEMENT EDGE
701011-04	OFF-RD MOVING OPERATIONS, 2L, 2W, DAY ONLY
701201-04	LANE CLOSURE, 2L, 2W, DAY ONLY, FOR SPEEDS > 45 MPH
701301-04	LANE CLOSURE, 2L, 2W, SHORT TIME OPERATIONS
701901-05	TRAFFIC CONTROL DEVICES
720001-01	SIGN PANEL MOUNTING DETAILS
720006-04	SIGN PANEL ERECTION DETAILS
720011-01	METAL POSTS FOR SIGNS, MARKERS & DELINEATORS
729001-01	APPLICATIONS OF TYPES A & B METAL POSTS (FOR SIGNS & MARKERS)

PLANS FOR PROPOSED FEDERAL AID HIGHWAY

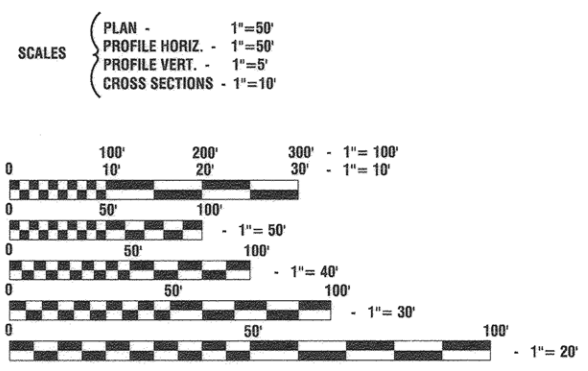
**PFEIFFER ROAD (FAU 3751)
SAUK TRAIL (FAU 3753) TO OLD PLANK TRAIL
MULTI-USE PATH**

**SECTION NO.: 13-00050-00-BT
PROJECT NO.: CMM-4003(307)
VILLAGE of FRANKFORT
WILL COUNTY
JOB NO.: C-91-270-14**



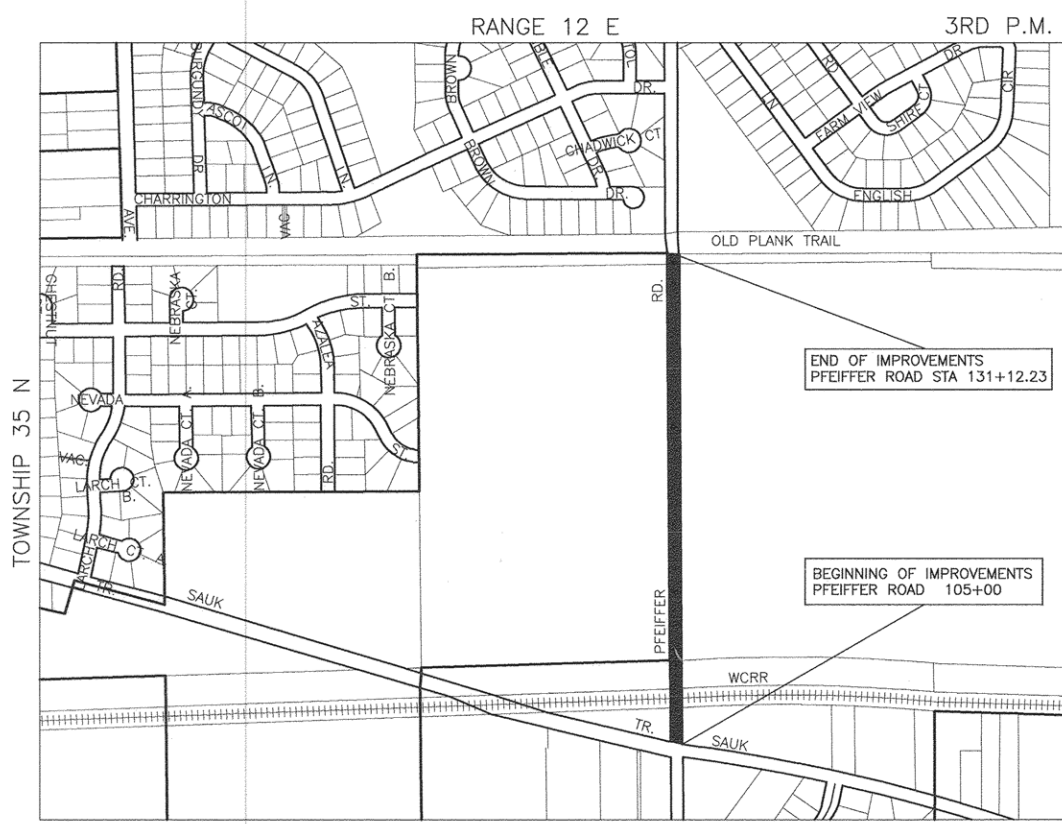
LOCATION OF SECTION INDICATED THUS: - [black rectangle] -

	PFEIFFER ROAD	OFF-STREET PATH
2012 ADT -	3,600	0
2040 ADT -	5,000	100
POSTED SPEED LIMIT -	40 mph	N/A
DESIGN PERIOD -	20 YEARS	20 YEARS
DESIGN SPEED LIMIT -	40 mph	20 mph
STREET CLASSIFICATION -	MAJOR COLLECTOR	N/A



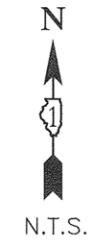
FULL SIZE PLANS HAVE BEEN PREPARED USING STANDARD ENGINEERING SCALES, REDUCED SIZED PLANS WILL NOT CONFORM TO STANDARD SCALES, IN MAKING MEASUREMENTS ON REDUCED PLANS, THE ABOVE SCALES MAY BE USED.

J. U. L. I. E.
JOINT UTILITY LOCATION INFORMATION FOR EXCAVATION
1-800-892-0123 or 811



LOCATION MAP

GROSS LENGTH=2,612.23 FEET=0.49 MILES
NET LENGTH=2,612.23 FEET=0.49 MILES



STATE OF ILLINOIS DEPARTMENT OF TRANSPORTATION
DIVISION OF HIGHWAYS

Approved: *[Signature]* 3/9/16
Mayor, Village of Frankfort

Passed: MARCH 29, 2016
[Signature]
District 1 Engineer of Local Roads & Streets

Released for Bid Based on Limited Review: *[Signature]*
MARCH 24, 2016
Region One Engineer

PRINTED BY THE AUTHORITY OF THE STATE OF ILLINOIS

PREPARED BY OR UNDER THE DIRECT SUPERVISION OF:

[Signature]
3/10/16



FEDERAL AID PROGRAM ENGINEER: FAWAD AQUEEL, P.E. 847-705-4021, SCHAMBOURG, IL
CONSULTANTS: ROBINSON ENGINEERING, LTD. 708-331-6700

CONTRACT NO. 61B46

SUMMARY OF QUANTITIES					CONSTRUCTION TYPE CODE
S.I.	CODE NO.	ITEM	UNIT	QUANTITY	0028
	20200100	EARTH EXCAVATION	CU YD	1185	1185
	20201200	REMOVAL AND DISPOSAL OF UNSUITABLE MATERIAL	CU YD	100	100
	20700220	POROUS GRANULAR EMBANKMENT	CU YD	250	250
	20800150	TRENCH BACKFILL	CU YD	5	5
	21101615	TOPSOIL FURNISH AND PLACE, 4"	SQ YD	4300	4300
	28000400	PERIMETER EROSION BARRIER	FOOT	2600	2600
	28100105	STONE RIPRAP, CLASS A3	SQ YD	6	6
	35101600	AGGREGATE BASE COURSE, TYPE B 4"	SQ YD	32	32
	35101800	AGGREGATE BASE COURSE, TYPE B 6"	SQ YD	2900	2900
	40201000	AGGREGATE FOR TEMPORARY ACCESS	TON	40	40
	40600275	BITUMINOUS MATERIALS (PRIME COAT)	POUND	6500	6500
	40603335	HOT-MIX ASPHALT SURFACE COURSE, MIX "D", N50	TON	500	500
	42400200	PORTLAND CEMENT CONCRETE SIDEWALK 5 INCH	SQ FT	280	280
	42400800	DETECTABLE WARNINGS	SQ FT	60	60
	44000200	DRIVEWAY PAVEMENT REMOVAL	SQ YD	135	135
	48101500	AGGREGATE SHOULDERS, TYPE B 6"	SQ YD	120	120
	50105220	PIPE CULVERT REMOVAL	FOOT	30	30
	54205053	PIPE CULVERTS, SPECIAL 18"	FOOT	47	47
	54205056	PIPE CULVERTS, SPECIAL 21"	FOOT	15	15
	54215553	METAL END SECTIONS 18"	EACH	2	2
	54215556	METAL END SECTIONS 21"	EACH	1	1
*	56400700	FIRE HYDRANTS (SPECIAL)	EACH	2	2
*	56400825	FIRE HYDRANT WITH AUXILIARY VALVE, VALVE BOX AND TEE	EACH	5	5

* - INDICATES SPECIALTY ITEMS

SUMMARY OF QUANTITIES					CONSTRUCTION TYPE CODE
S.I.	CODE NO.	ITEM	UNIT	TOTAL QUANTITY	0028
	60265700	VALVE VAULTS TO BE ADJUSTED	EACH	3	3
	67100100	MOBILIZATION	LSUM	1	1
	70100450	TRAFFIC CONTROL AND PROTECTION, STANDARD 701201	LSUM	1	1
*	72000100	SIGN PANEL - TYPE 1	SQ FT	5	5
*	72400500	RELOCATE SIGN PANEL ASSEMBLY - TYPE A	EACH	3	3
*	72900100	METAL POST - TYPE A	FOOT	60	60
	Z0004538	HOT-MIX ASPHALT DRIVEWAY PAVEMENT, 10"	SQ YD	212	212
*	Z0022810	FENCE REMOVAL (SPECIAL)	FOOT	2035	2035
	Z0048665	RAILROAD PROTECTIVE LIABILITY INSURANCE	LSUM	1	1
	X0322936	REMOVE EXISTING FLARED END SECTION	EACH	2	2
*	X0327024	FIRE HYDRANTS TO BE REMOVED & SALVAGED	EACH	7	7
	X0350805	FOLD DOWN BOLLARDS	EACH	1	1
	XX001472	WOOD BOLLARD	EACH	2	2
	XX006343	SEEDING (COMPLETE)	SQ YD	4300	4300
	XX006846	AGGREGATE FIELD ENTRANCE	SQ YD	30	30

* - INDICATES SPECIALTY ITEMS

FILE NAME = 12891_02-QUAN-01 - IDOT P01

USER NAME =	DESIGNED -- TAG	REVISED --
	CHECKED -- JMN	REVISED --
PLOT SCALE =	DRAWN -- RG	REVISED --
PLOT DATE = 03-09-16	CHECKED -- AG	REVISED --

STATE OF ILLINOIS
DEPARTMENT OF TRANSPORTATION

F.A.U. 3751 (PFEIFFER ROAD)
MULTI-USE PATH
SUMMARY OF QUANTITIES

SCALE: NA SHEET NO. 02 OF 23 SHEETS STA. TO STA.

F.A.U. RTE. 3751	SECTION 13-00050-00-BT	COUNTY WILL	TOTAL SHEETS 23	SHEET NO. 02
FED. ROAD DIST. NO. 1 ILLINOIS			CONTRACT NO. 61B46	
FED. AID PROJECT CMM-4003(307)				

GENERAL NOTES

1. BOTH THE ROBINSON ENGINEERING, LTD. FIELD OFFICE (708-331-6700) AND ADAM NIELSEN AT THE VILLAGE OF FRANKFORT (815-469-2177) SHALL BE NOTIFIED TWO (2) WORKING DAYS BEFORE CONSTRUCTION BEGINS.
2. AREAS DISTURBED BY CONSTRUCTION SHALL BE KEPT TO A MINIMUM. ALL AREAS DISTURBED UNNECESSARILY SHALL BE RESTORED AS REQUIRED IN THE SPECIAL PROVISION AT THE CONTRACTOR'S EXPENSE.
3. ACCESS TO EXISTING DRIVEWAYS, PATHS, AND ALL PUBLIC FACILITIES SHALL BE MAINTAINED AT ALL TIMES BY PLACEMENT OF TEMPORARY AGGREGATE. THE CONTRACTOR SHALL PERIODICALLY MONITOR ALL AFFECTED AREAS DURING THE PROJECT, AND SHALL PLACE ADDITIONAL AGGREGATE WHEN NECESSARY.
4. UTILITIES INDICATED ON THE PLANS ARE PROVIDED FOR THE CONTRACTOR'S USE AND ARE BASED UPON INFORMATION AVAILABLE AT THE TIME OF THE ADVERTISEMENT FOR BIDS. THE OWNER AND ENGINEER DO NOT GUARANTEE THE ACCURACY OF UTILITIES INFORMATION. IT SHALL BE THE CONTRACTOR'S RESPONSIBILITY TO NOTIFY J.U.L.I.E. AT LEAST 48 HOURS PRIOR TO EXCAVATION TO VERIFY LOCATIONS OF ALL UTILITIES. IF DETERMINED NECESSARY UTILITY RELOCATIONS SHALL BE PERFORMED BY PRIVATE UTILITY OWNERS. NO ADDITIONAL COMPENSATION SHALL BE ALLOWED DUE TO DELAYS OR INCONVENIENCES CAUSED BY SUCH ADJUSTMENTS.
5. CONTRACTOR SHALL BE RESPONSIBLE AT ALL TIMES FOR TRAFFIC CONTROL AND PROTECTION IN ACCORDANCE WITH IDOT STANDARD SPECIFICATIONS ADOPTED APRIL 1, 2016, THE LATEST EDITION OF THE ILLINOIS MANUAL ON UNIFORM TRAFFIC CONTROL DEVICES FOR STREETS AND HIGHWAYS, AND THE STANDARD SPECIFICATIONS FOR TRAFFIC CONTROL ITEMS. TRAFFIC CONTROL AND PROTECTION WILL BE PAID FOR AS TRAFFIC CONTROL AND PROTECTION (SPECIAL).
6. THE TOP OF ALL STRUCTURES SHALL BE FLUSH WITH THE ADJACENT SURFACE OR THE INDICATED ELEVATION SHOWN ON THE PLANS. FRAME ELEVATIONS ARE GIVEN ONLY TO ASSIST IN DETERMINING THE OVERALL HEIGHT OF THE STRUCTURE. FRAMES ON ALL NEW STRUCTURES SHALL BE ADJUSTED TO THE FINAL SURFACE ELEVATION AS PART OF THE NEW STRUCTURE COST.
7. ITEMS OF WORK LISTED IN THE SUMMARY OF QUANTITIES NOT SPECIFICALLY CALLED OUT ON THE PLANS SHALL BE PERFORMED AS DIRECTED BY THE ENGINEER.
8. WHEN EXISTING DRAINAGE FACILITIES ARE DISTURBED THE CONTRACTOR SHALL PROVIDE AND MAINTAIN TEMPORARY OUTLETS AND CONNECTION FOR ALL PRIVATE OR PUBLIC DRAINS, SEWERS OR CATCH BASINS. HE SHALL PROVIDE FACILITIES TO TAKE ALL STORM WATER WHICH WILL BE RECEIVED BY THESE DRAINS AND SEWERS AND DISCHARGE SAME. HE SHALL PROVIDE AND MAINTAIN AN EFFICIENT PUMPING PLANT, IF NECESSARY, AND A TEMPORARY OUTLET, AND BE PREPARED AT ALL TIMES TO DISPOSE OF THE WATER RECEIVED FROM THESE TEMPORARY SEWER CONNECTIONS UNTIL SUCH TIME AS THE PERMANENT CONNECTIONS WITH SEWERS ARE BUILT AND IN SERVICE. THIS WORK WILL NOT BE PAID FOR SEPARATELY, BUT WILL BE INCLUDED IN THE COST OF VARIOUS ITEMS.
9. THE CONTRACTOR SHALL MAKE EVERY ATTEMPT NOT TO DAMAGE EXISTING TREES.
10. CONTRACTOR SHALL OBTAIN A SPECIAL USE PERMIT FROM FOREST PRESERVE DISTRICT OF WILL COUNTY. CALL 815-727-8700, 48 HOURS BEFORE CONSTRUCTION BEGINS.
11. IT SHALL BE THE CONTRACTOR'S RESPONSIBILITY TO VERIFY ALL DIMENSIONS AND CONDITIONS EXISTING IN THE FIELD PRIOR TO CONSTRUCTION AND ORDERING OF MATERIALS.
12. THE REMOVAL AND/OR REPLACEMENT OF ANY DRIVEWAYS, PAVEMENT, CURB, SIDEWALK, ECT. SHALL BE ACCOMPLISHED BY MEANS OF A SAW CUT JOINT, AT THE DIRECTION OF THE ENGINEER. THIS WORK WILL NOT BE PAID FOR SEPARATELY, BUT SHALL BE INCLUDED IN THE UNIT PRICE FOR THE VARIOUS ITEMS BEING REMOVED.
13. ANY LOOSE MATERIAL DEPOSITED IN THE FLOW LINE OF DITCHES, GUTTERS OR OTHER DRAINAGE STRUCTURES SHALL BE REMOVED BY THE END OF EACH DAY BY THE CONTRACTOR AT THEIR EXPENSE.
14. ANY PROPOSED ACTIVITY IN THE VICINITY OF A HIGHWAY-RAIL GRADE CROSSING MUST ADHERE TO THE GUIDELINES SET FORTH IN THE CURRENT EDITION OF THE MANUAL ON UNIFORM TRAFFIC CONTROL DEVICES (MUTCD) REGARDING WORK IN TEMPORARY TRAFFIC CONTROL ZONES IN THE VICINITY OF HIGHWAY-RAIL GRADE CROSSINGS WHICH STATES THAT LANE RESTRICTIONS, FLAGGING, OR OTHER OPERATIONS SHALL NOT CREATE CONDITIONS WHERE VEHICLES CAN BE QUEUED ACROSS THE RAILROAD TRACKS. IF THE QUEUING OF VEHICLES ACROSS THE TRACKS CANNOT BE AVOIDED, A UNIFORMED LAW ENFORCEMENT OFFICER OR FLAGGER SHALL BE PROVIDED AT THE CROSSING TO PREVENT VEHICLES FROM STOPPING ON THE TRACKS, EVEN IF AUTOMATIC WARNING DEVICES ARE IN PLACE. IT IS THE CONTRACTOR'S SOLE RESPONSIBILITY TO COORDINATE WITH THE WISCONSIN CENTRAL RAILROAD WHENEVER CONSTRUCTION ACTIVITY IS WITHIN 25 FEET OF THE RAILROAD ROW. THE CONTRACTOR SHALL RETAIN FLAGMEN EMPLOYED AND DESIGNATED BY THE WISCONSIN CENTRAL RAILROAD TO MONITOR ON-COMING TRAIN TRAFFIC, AND ADVISE CONTRACTOR PERSONNEL WHEN ACTIVITY ON OR NEAR THE RAILROAD RIGHT-OF-WAY MAY PROCEED. THIS ITEM WILL BE PAID FOR ACCORDING TO ARTICLE 107.12 AND WILL BE REIMBURSED ACCORDING TO ARTICLE 109.05.
15. ANY NECESSARY BUSH AND BRUSH REMOVAL/CLEARING WILL BE INCLUDED IN THE COST OF EARTH EXCAVATION OR EARTH EXCAVATION, SPECIAL. EARTH EXCAVATION, SPECIAL PAY ITEM IS USED IN THE AREAS OF THE COMED LEASE AGREEMENT.
16. ADDITIONAL 6 INCHES OF TOPSOIL STRIPPING IN AREAS OF FILL WILL BE INCLUDED IN THE COST OF EARTH EXCAVATION OR EARTH EXCAVATION, SPECIAL. EARTH EXCAVATION, SPECIAL PAY ITEM IS USED IN THE AREAS OF THE COMED LEASE AGREEMENT. POROUS GRANULAR EMBANKMENT (PGE) WILL BE USED FOR FILL MATERIAL AS DIRECTED BY THE RESIDENT ENGINEER.

FILE NAME = 12691_02-QUAN-01 - IDOT P02

USER NAME =	DESIGNED -- TAG	REVISED --
	CHECKED -- JMN	REVISED --
PLOT SCALE =	DRAWN -- RG	REVISED --
PLOT DATE = 03-09-16	CHECKED -- AG	REVISED --

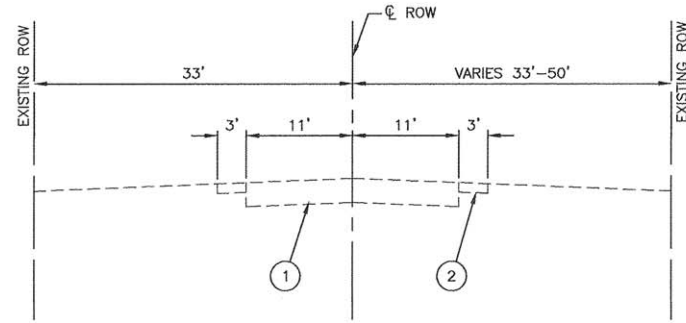
**STATE OF ILLINOIS
DEPARTMENT OF TRANSPORTATION**

F.A.U. 3751 (PFEIFFER ROAD)
MULTI-USE PATH
GENERAL NOTES

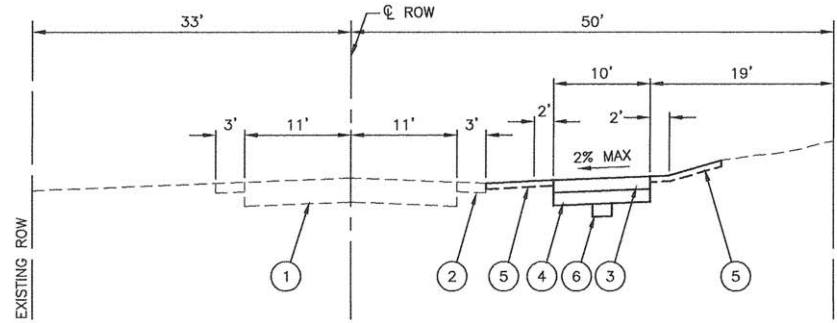
SCALE: NA SHEET NO. 03 OF 23 SHEETS STA. TO STA.

F.A.U. RTE.	SECTION	COUNTY	TOTAL SHEETS	SHEET NO.
3751	13-00050-00-BT	WILL	23	03
FED. ROAD DIST. NO. 1 ILLINOIS			FED. AID PROJECT CMM-4003(307)	

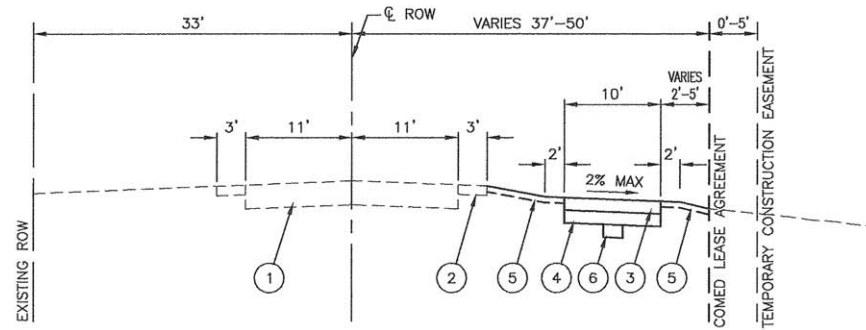
CONTRACT NO. 61B46



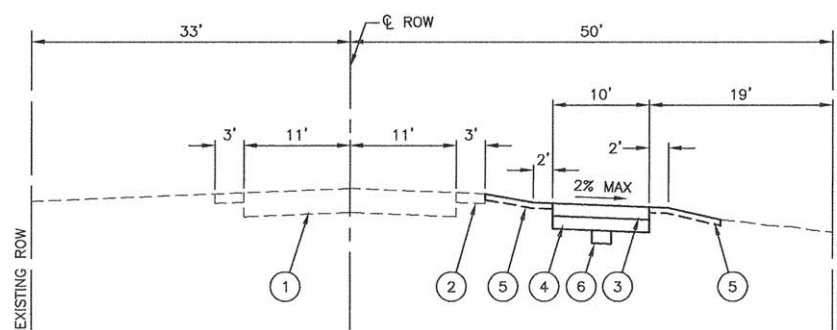
EXISTING TYPICAL SECTION
PFEIFFER ROAD
STA 105+00.00 TO STA 131+12.23



PROPOSED TYPICAL SECTION
PFEIFFER ROAD
STA 110+50 TO STA 114+00



PROPOSED TYPICAL SECTION
PFEIFFER ROAD
STA 105+00 TO STA 109+90



PROPOSED TYPICAL SECTION
PFEIFFER ROAD
STA 109+90 TO STA 110+50
AND
STA 114+00 TO STA 131+12.23

LEGEND

- ① EXISTING PAVEMENT
- ② EXISTING AGGREGATE SHOULDER
- ③ HOT-MIX ASPHALT SURFACE COURSE, MIX D, N50, 3"
- ④ AGGREGATE BASE COURSE, TYPE B, 6"
- ⑤ TOPSOIL FURNISH AND PLACE, 4" AND SODDING
- ⑥ POROUS GRANULAR EMBANKMENT (AS DIRECTED BY THE ENGINEER)

HOT-MIX ASPHALT MIXTURE REQUIREMENTS

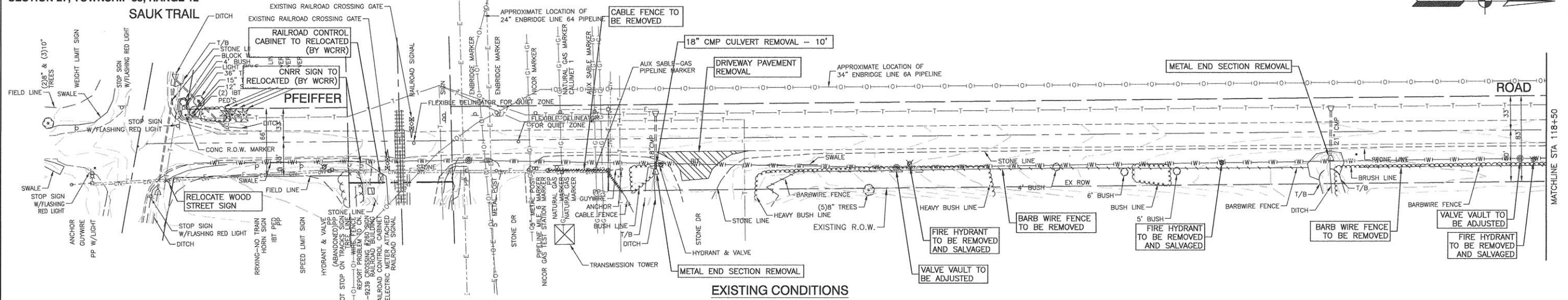
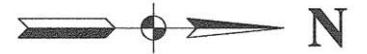
MIXTURE TYPE	AIR VOIDS @ Ndes
MULTI-USE PATH	
HOT MIX ASPHALT SURFACE COURSE, MIX "D", N50(IL-9.5mm), 3"	4% @ 50 Gyr.
DRIVEWAYS	
HOT MIX ASPHALT SURFACE COURSE, MIX "D", N50 (IL-9.5mm); 2"	4% @ 50 Gyr.
HOT MIX ASPHALT BASE COURSE, (HMA BINDER IL-19.0mm); CE-B"	4% @ 50 Gyr.

NOTES:

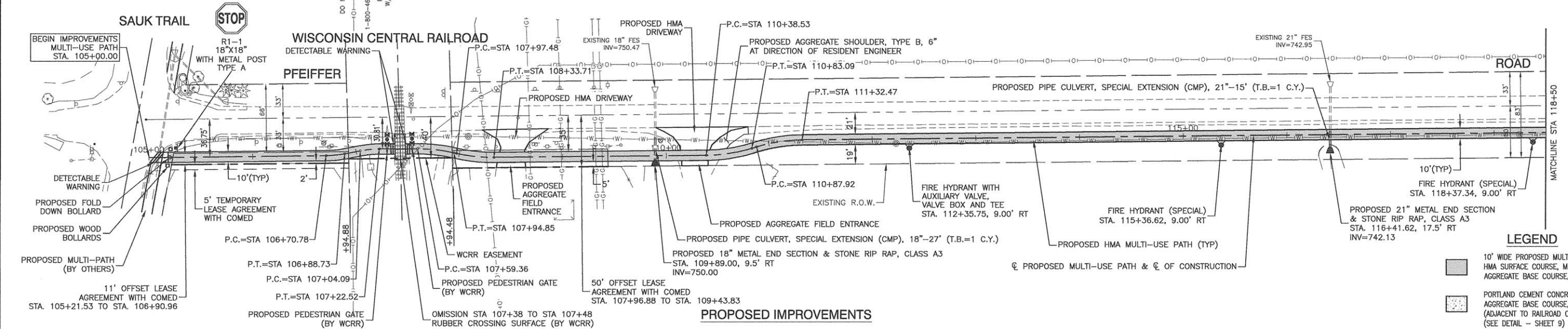
1. THE UNIT WEIGHT USED TO CALCULATE ALL HOT-MIX ASPHALT SURFACE MIXTURE QUANTITIES IS 112 LBS/SQ YD/IN.
2. THE "AC TYPE" FOR POLYMERIZED HMA MIXES SHALL BE "SBS/SBR PG 76-22" AND FOR NON-POLYMERIZED HMA THE "AC" TYPE" SHALL BE "PG 64-22" UNLESS MODIFIED BY DISTRICT ONE SPECIAL PROVISIONS.
3. FOR HMA FULL DEPTH "AC TYPE" SEE SPECIAL PROVISIONS.
4. FOR USE OF RECYCLED MATERIALS SEE SPECIAL PROVISIONS.

SECTION 26, TOWNSHIP 35, RANGE 12
SECTION 27, TOWNSHIP 35, RANGE 12

WISCONSIN CENTRAL RAILROAD

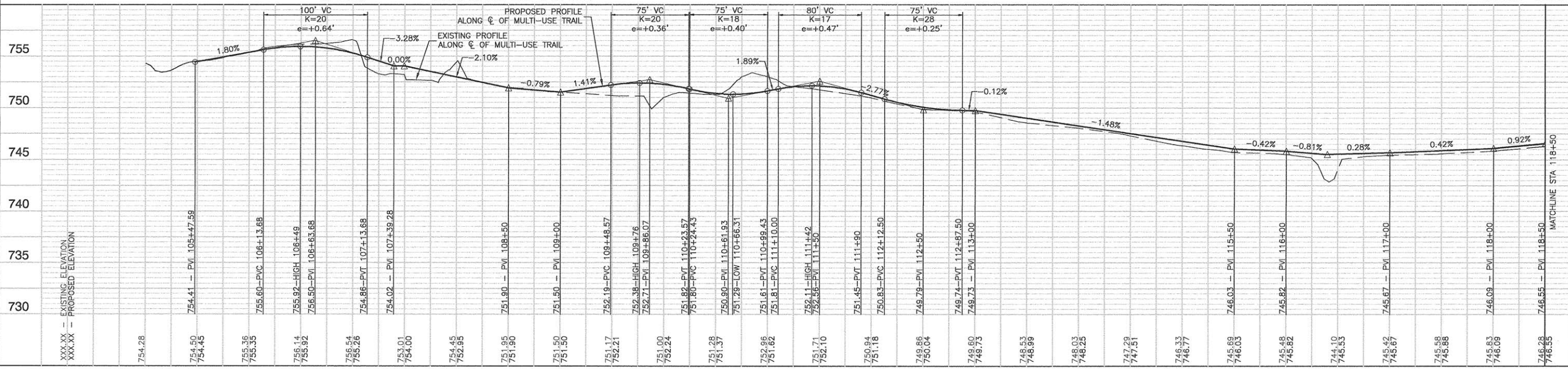


EXISTING CONDITIONS



PROPOSED IMPROVEMENTS

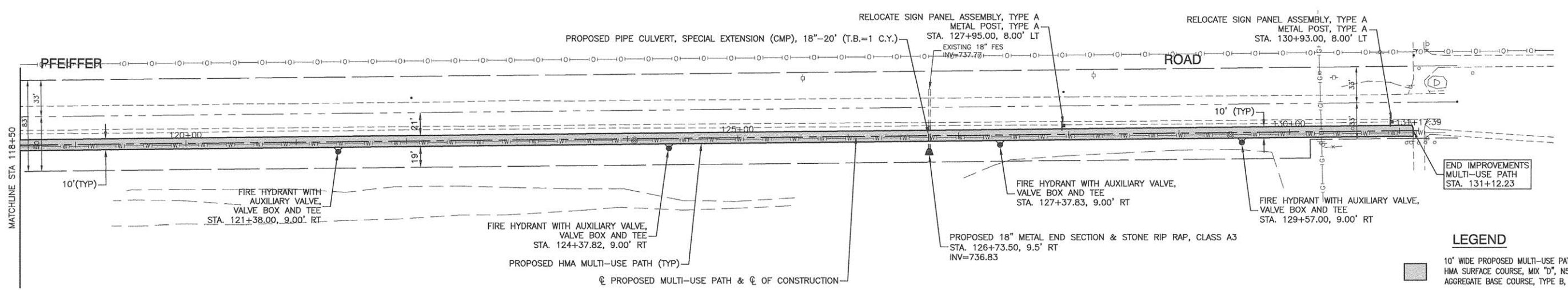
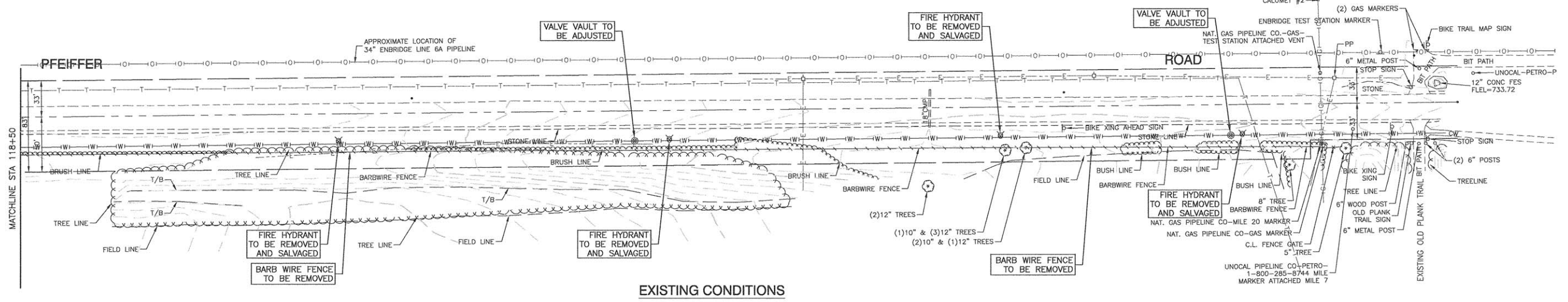
- LEGEND**
- 10' WIDE PROPOSED MULTI-USE PATH HMA SURFACE COURSE, MIX "D", N50, 3" AGGREGATE BASE COURSE, TYPE B, 6"
 - PORTLAND CEMENT CONCRETE SIDEWALK, 5" AGGREGATE BASE COURSE, TYPE B, 4" (ADJACENT TO RAILROAD CROSSING) (SEE DETAIL - SHEET 9)



DATE	
BY	
REVISIONS	
NO.	
DESCRIPTION	
DATE	
BY	
REVISIONS	
NO.	
DESCRIPTION	
DATE	
BY	
REVISIONS	
NO.	
DESCRIPTION	

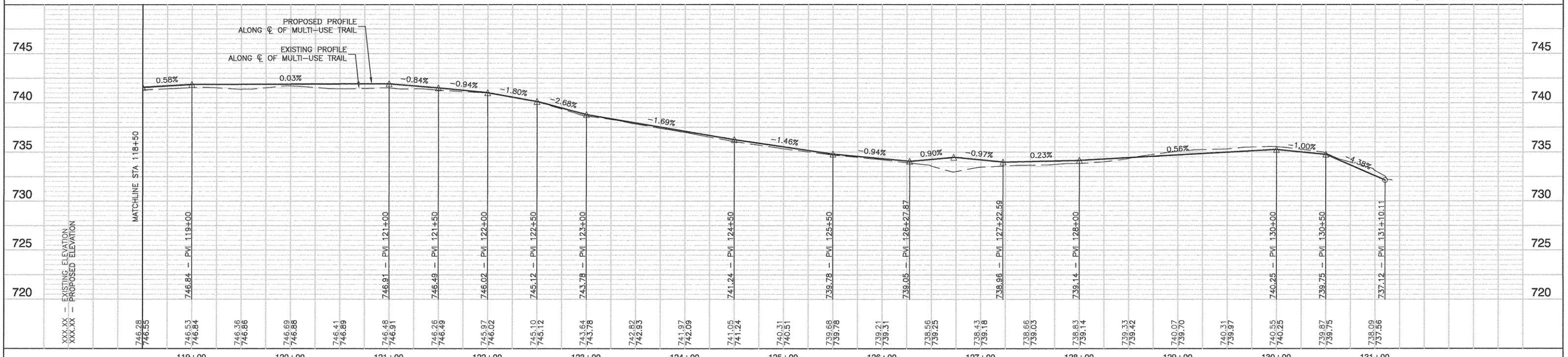
DATE	
BY	
REVISIONS	
NO.	
DESCRIPTION	
DATE	
BY	
REVISIONS	
NO.	
DESCRIPTION	
DATE	
BY	
REVISIONS	
NO.	
DESCRIPTION	

FILE NAME = 12991_02-PLPR-01 - IDOT PLPR01	USER NAME =	DESIGNED -- TAG	REVISOR --	STATE OF ILLINOIS DEPARTMENT OF TRANSPORTATION		F.A.U. 3751 (PFEIFFER ROAD) MULTI-USE PATH PLAN & PROFILE		F.A.U. RTE = 3751	SECTION = 13-00050-00-BT	COUNTY = WILL	TOTAL SHEETS = 23	SHEET NO. = 06
	PLOT SCALE =	DRAWN -- KWM	REVISOR --					FED. ROAD DIST. NO. = 1	ILLINOIS	FED. AID PROJECT = CMM-4003(307)		
	PLOT DATE = 03-09-16	CHECKED -- ACAD	REVISOR --	SCALE: H 1"=50' V 1"=5'		SHEET NO. 06 OF 23 SHEETS		STA. 105+00.00 TO STA. 118+50.00		CONTRACT NO. 61B46		



LEGEND

- 10' WIDE PROPOSED MULTI-USE PATH
HMA SURFACE COURSE, MIX "D", N50, 3"
AGGREGATE BASE COURSE, TYPE B, 6"
- PORTLAND CEMENT CONCRETE SIDEWALK, 5"
AGGREGATE BASE COURSE, TYPE B, 4"
(ADJACENT TO RAILROAD CROSSING)



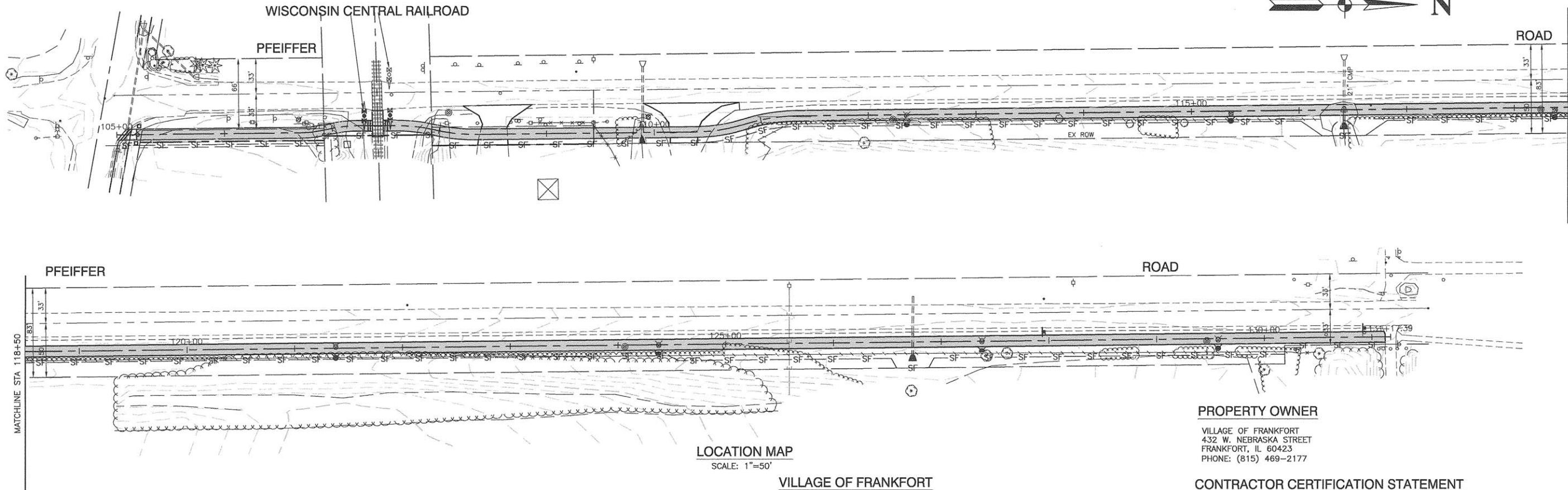
PLAN

DATE	
BY	
SURVEYED	
ALIGNED	
CHECKED	
RT. OF WAY CHECKED	
NO. OF WAY CHECKED	
NO. OF FILE NAME	

PROFILE

DATE	
BY	
SURVEYED	
GRADES CHECKED	
B.M. NOTED	

FILE NAME = 12691_02-PLPR-01 - IDOT PLPR02	USER NAME =	DESIGNED - TAG	REVISED -	STATE OF ILLINOIS DEPARTMENT OF TRANSPORTATION	F.A.U. 3751 (PFEIFFER ROAD) MULTI-USE PATH PLAN & PROFILE		F.A.U. RTE = 3751	SECTION = 13-00050-00-BT	COUNTY = WILL	TOTAL SHEETS = 23	SHEET NO. = 07
	PLOT SCALE =	CHECKED - JMN	REVISED -		SCALE: H 1"=50' V 1"=5'						
	PLOT DATE = 03-09-16	DRAWN - KWM	REVISED -		SHEET NO. 07 OF 23 SHEETS		STA. TO STA.				
		CHECKED - ACAD	REVISED -		FED. ROAD DIST. NO. 1			ILLINOIS	FED. AID PROJECT	CMM-4003(307)	



DATE	BY	DATE	BY

DATE	BY	DATE	BY

LOCATION MAP
SCALE: 1"=50'

PROPERTY OWNER
VILLAGE OF FRANKFORT
432 W. NEBRASKA STREET
FRANKFORT, IL 60423
PHONE: (815) 469-2177

CONTRACTOR CERTIFICATION STATEMENT
I CERTIFY UNDER PENALTY OF LAW THAT I UNDERSTOOD THE TERMS AND CONDITIONS OF THE GENERAL NATIONAL POLLUTANT DISCHARGE ELIMINATION SYSTEM PERMIT (ILR 100000) THAT AUTHORIZES THE STORMWATER DISCHARGES ASSOCIATED WITH INDUSTRIAL ACTIVITY FROM CONSTRUCTION SITE IDENTIFIED AS PART OF THIS CERTIFICATION.

DATED THIS _____ DAY OF _____ 20____

BY: _____ TITLE: _____

COMPANY: _____

ADDRESS: _____

TELEPHONE: _____

LEGEND:
— SF — PERIMETER EROSION BARRIER

GENERAL NOTES:
1. ALL DISTURBED AREAS, UNLESS OTHERWISE INDICATED, SHALL BE RESTORED WITH TOPSOIL, 4", SODDING PER THE SPECIAL PROVISIONS.

TYPICAL CONSTRUCTION SEQUENCING (90 DAY DURATION)

- INSTALLATION OF SOIL EROSION AND SEDIMENT CONTROL (SE/SC) MEASURES
 - SELECTIVE VEGETATION REMOVAL FOR SILT FENCE INSTALLATION
 - SILT FENCE INSTALLATION
 - CONSTRUCTION FENCING AROUND AREAS NOT TO BE DISTURBED
- TREE REMOVAL WHERE NECESSARY (CLEAR AND GRUB)
- CONSTRUCT SEDIMENT TRAPPING DEVICES (SEDIMENT TRAPS, BASINS, ETC.)
- INSTALL FIRE HYDRANTS AND CULVERTS.
- TEMPORARILY STABILIZE ALL AREAS INCLUDING AREAS THAT HAVE REACHED TEMPORARY GRADE.
- INSTALL MULTI-USE PATH.
- INSTALL STRUCTURES AND GRADE.
- PERMANENTLY STABILIZE LOTS.
- REMOVE ALL TEMPORARY SE/SC MEASURES AFTER SITE IS STABILIZED WITH VEGETATION.

STORMWATER POLLUTION PREVENTION NOTES

- ANY SEDIMENT REACHING PUBLIC OR PRIVATE ROAD SHALL BE REMOVED BY SHOVELING OR STREET CLEANING (NOT FLUSHING) BEFORE THE END OF EACH WORKDAY AND TRANSPORTED TO A CONTROLLED SEDIMENT DISPOSAL SITE.
- DISTURBED AREAS SHALL BE STABILIZED WITH TEMPORARY OR PERMANENT MEASURES WITHIN 7 CALENDAR DAYS FOLLOWING THE END OF ACTIVE DISTURBANCE OR REDISTURBANCE.
- ANY SEDIMENT REACHING THE STORM SEWER SYSTEM SHALL BE REMOVED FROM THE SEWER AND SHALL NOT BE FLUSHED DOWNSTREAM.
- ANY ERODED SEDIMENT CAPTURED IN DETENTION, RETENTION, OR DEPRESSIONAL STORAGE AREA SHALL BE REMOVED BY THE APPLICANT BEFORE PROJECT COMPLETION.
- ALL TEMPORARY AND PERMANENT EROSION AND SEDIMENT CONTROL PRACTICES MUST BE MAINTAINED AND REPAIRED AS NEEDED TO ASSURE EFFECTIVE PERFORMANCE OF THEIR INTENDED FUNCTION.
- ALL TEMPORARY EROSION AND SEDIMENT CONTROL MEASURES SHALL BE DISPOSED OF WITHIN 30 DAYS AFTER FINAL SITE STABILIZATION IS ACHIEVED WITH PERMANENT SOIL STABILIZATION MEASURES.
- ALL CONSTRUCTED OR MODIFIED STORM WATER CONVEYANCE CHANNELS SHALL BE STABILIZED WITHIN 48 HOURS CONSISTENT WITH THE FOLLOWING:
 - FOR GRADES UP TO 4% SEEDING IN COMBINATION WITH MULCH, EROSION CONTROL BLANKET, OR AN EQUIVALENT MEASURE SHALL BE APPLIED.
 - FOR GRADES OF FOUR (4%) TO EIGHT (8%) PERCENT, SOD OR AN EQUIVALENT CONTROL MEASURE SHALL BE APPLIED TO THE CHANNEL.
 - FOR GRADES GREATER THAN EIGHT PERCENT, ROCK, RIP-RAP, OR AN EQUIVALENT EROSION CONTROL MEASURE SHALL BE APPLIED.
- PROPOSED MAJOR AMENDMENTS OF THE SITE DEVELOPMENT OR EROSION AND SEDIMENTATION CONTROL PLANS SHALL BE SUBMITTED TO THE DEPARTMENT OF COMMUNITY SERVICES AND DEVELOPMENT TO BE APPROVED IN THE SAME MANNER AS THE ORIGINAL PLANS.

CONTROLS AND BEST MANAGEMENT PRACTICES:

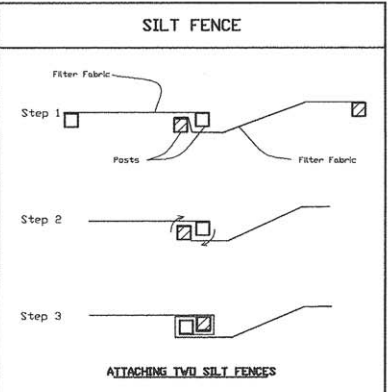
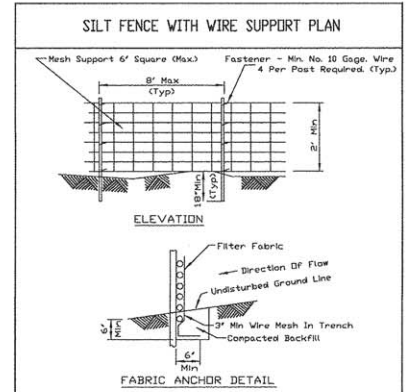
- ALL EROSION AND SEDIMENT CONTROL MEASURES ARE TO BE CONSTRUCTED AND MAINTAINED IN ACCORDANCE WITH "PROCEDURES AND STANDARDS FOR URBAN SOIL EROSION AND SEDIMENTATION CONTROL IN ILLINOIS" AND THE "ILLINOIS URBAN MANUAL".
- THE CONTRACTOR SHALL KEEP ALL ADJACENT STREETS CLEAN AT ALL TIMES.
- SEEDING AND MULCHING SHALL BE INITIATED WITHIN 7 DAYS AFTER THE FINAL GRADES HAVE BEEN ATTAINED. ALL UNSTABILIZED AREAS NOT DISTURBED FOR 7 DAYS SHALL BE SEEDED TEMPORARILY. THE TEMPORARY SEED MIXTURE SHALL BE AS DIRECTED BY THE "ILLINOIS URBAN MANUAL".
- THE CONTRACTOR SHALL PREVENT SILT FROM ENTERING ANY DOWNSTREAM STORMWATER CONVEYANCE SYSTEM THAT MAY BE ENCOUNTERED BY INSTALLING THE REQUIRED INLET PROTECTION IN ALL STRUCTURES WITH OPEN GRATES.
- IF BLOWING DUST SHOULD BE A PROBLEM, AS DETERMINED BY THE VILLAGE OF FRANKFORT, THE CONTRACTOR SHALL EMPLOY A WATER TRUCK AS OFTEN AS NECESSARY, TO KEEP THE SOIL IN A DAMPENED CONDITION TO MINIMIZE AIRBORNE PARTICLES. INSTRUCTIONS IN THE ILLINOIS URBAN MANUAL STANDARD #825 SHALL BE FOLLOWED.
- THE CONTRACTOR SHALL INSPECT ALL SOIL EROSION CONTROL MEASURES ON A WEEKLY BASIS OR AFTER A 0.5 INCH RAINFALL AND REPLACE THEM IN A TIMELY BASIS. A REPORT SUMMARIZING THE SCOPE OF THE INSTALLATION, NAME(S) AND QUALIFICATIONS OF PERSONNEL MAKING THE INSPECTION, THE DATE(S) OF THE INSPECTION, MAJOR OBSERVATIONS RELATING TO THE IMPLEMENTATION OF THE STORMWATER PREVENTION POLLUTION PLAN (SWPPP) AND ACTIONS TAKEN. THESE REPORTS SHALL BE MADE AND RETAINED AS PART OF THE SWPPP FOR AT LEAST 3 YEARS AFTER DATE OF INSPECTION.
- ANY SOIL EROSION CONTROL MEASURES IN ADDITION TO THOSE OUTLINED IN THE PLANS, AND WHICH ARE DEEMED NECESSARY BY THE VILLAGE OF FRANKFORT INSPECTOR, SHALL BE IMPLEMENTED IMMEDIATELY BY THE CONTRACTOR.
- TEMPORARY PERIMETER EROSION CONTROL BARRIERS, DITCH CHECKS AND CULVERT INLET PROTECTION SHALL BE REMOVED AFTER FINAL SITE STABILIZATION.
- ALL REPORTS OF NON-COMPLIANCE SHALL BE MAILED TO THE FOLLOWING ADDRESS:
ILLINOIS ENVIRONMENTAL PROTECTION AGENCY
DIVISION OF WATER POLLUTION CONTROL
COMPLIANCE ASSURANCE SECTION
1021 NORTH GRAND EAST
POST OFFICE BOX 19276
SPRINGFIELD, ILLINOIS 62794-9276

STORMWATER POLLUTION PREVENTION NOTES

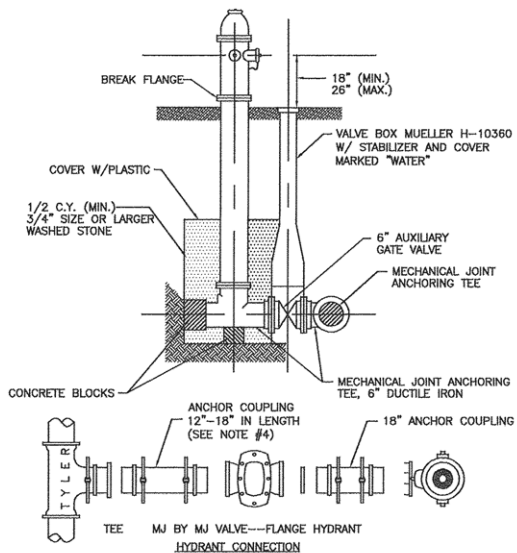
- THIS DEVELOPMENT WILL CONSIST OF GRADING AND THE CONSTRUCTION OF UTILITIES.
- THE SEQUENCE OF CONSTRUCTION WILL BE AS FOLLOWS: INSTALLATION OF EROSION CONTROL MEASURES, INSTALLATION OF UTILITIES, FINAL GRADING, PLACEMENT OF TOPSOIL AND SEEDING.
- EROSION AND SEDIMENTATION CONTROLS:
 - PERMANENT VEGETATION WILL BE ESTABLISHED AFTER TOPSOIL IS RESPREAD.
 - SILT FENCE WILL PREVENT SEDIMENT FROM ENTERING DETENTION BASINS.
 - STORMWATER MANAGEMENT FACILITIES WILL PREVENT SEDIMENT FROM LEAVING THE SITE.
 - DEWATERING OPERATIONS WILL BE PUMPED INTO SEDIMENT BASINS.
 - SILT SAVER OR APPROVED EQUAL WILL BE INSTALLED AT ALL OPEN GRATE STORM STRUCTURES.
- THE EARTHWORK CONTRACTOR SHALL MAINTAIN THE SEDIMENT AND EROSION CONTROL MEASURES IDENTIFIED ON THIS PLAN UNTIL THE SITE IS STABILIZED.

NOTES VILLAGE OF FRANKFORT:

- THE CONTRACTOR SHALL TAKE NECESSARY STEPS TO CONTAIN WASTE SUCH AS DISCARDED BUILDING MATERIALS, CONCRETE TRUCK WASH OUTS, CHEMICAL LITTER AND SANITARY WASTE AT THE CONSTRUCTION SITE THAT MAY CAUSE ADVERSE IMPACTS ON WATER QUALITY.
- ALL STORM SEWER FRAMES AND GRATES/LIDS SHALL BE MARKED WITH "DUMP NO WASTE" AND "DRAINS TO CREEK" AS SHOWN IN THE DETAILS.
- AN INCIDENT OF NON-COMPLIANCE (ION) MUST BE COMPLETED AND SUBMITTED TO THE IEPA IF, AT ANY TIME, AN EROSION OR SEDIMENT CONTROL DEVICE FAILS.
- A NOTICE OF TERMINATION (NOT) MUST BE COMPLETED AND SUBMITTED TO THE IEPA WHEN ALL PERMANENT EROSION CONTROL MEASURES ARE IN PLACE WITH A 70% ESTABLISHMENT OF VEGETATION.
- ANY PROPOSED TOPSOIL AND/OR TRENCH SPOIL STOCKPILES MUST BE SECURED BY A ROW OF SILT FENCE AROUND THE PERIMETER OF THE STOCKPILES.

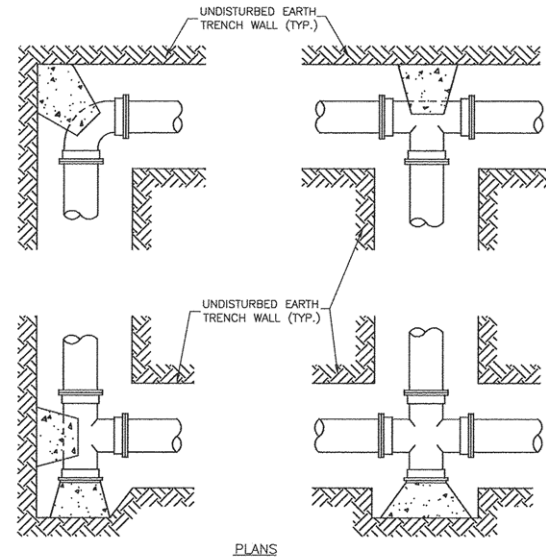


NOTES:
1. Wires of mesh support shall be min. gage no. 12.
2. Temporary sediment fence shall be installed prior to any grading work in the area to be protected. They shall be maintained throughout the construction period and removed in conjunction with the final grading and site stabilization.
3. Filter fabric shall meet the requirements of material specification 598 Geotextile Table 1 or 2, Class I with equivalent opening size of at least 30 for removal and 50 for seven.
4. Fence posts shall be either standard steel post or wood post with a minimum cross-sectional area of 3.5 sq. in.

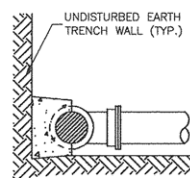


- NOTES:**
1. ALL CASTINGS SHALL BE MADE IN THE U.S.A. WITH U.S.A. MATERIALS. FIRE HYDRANTS SHALL MEET AWWA C-502 AND SHALL BE MUELLER "CENTURION" A-423, WITH AN OIL- ENCASED BONNET, STAINLESS STEEL BOLTS, 5-1/4" VALVE OPENING, TWO 2-1/2" HOSE NOZZLES AND ONE 4-1/2" PUMPER NOZZLE. THREADS SHALL CONFORM TO NATIONAL STANDARD SPECIFICATIONS.
 2. HYDRANTS SHALL BE INSTALLED NO CLOSER THAN THREE FEET NOR FARTHER THAN 8 FEET FROM THE BACK OF CURB. NO HYDRANT SHALL BE INSTALLED WITHIN 48" OF ANY OBSTRUCTION NOR SHALL ANY OBSTRUCTION BE PLACED WITHIN 48" OF A HYDRANT.
 3. THE HYDRANTS SHALL BE PAINTED RED BY THE MANUFACTURER.
 4. ANCHOR COUPLING TO BE INSTALLED AT A LENGTH TO PROVIDE A MINIMUM 1' BETWEEN BACK OF CURB/EDGE OF PAVEMENT AND AUXILIARY VALVE.
 5. AUXILIARY VALVES SHALL ALWAYS BE INSTALLED IN THE PARKWAY. INSTALLATION IN PAVED SURFACE IS PROHIBITED.

**FIRE HYDRANT INSTALLATION
WHERE MAIN IS IN THE PAVEMENT**



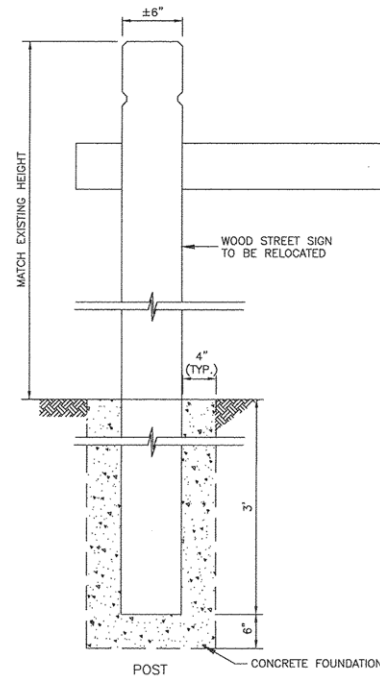
PLANS



SECTION

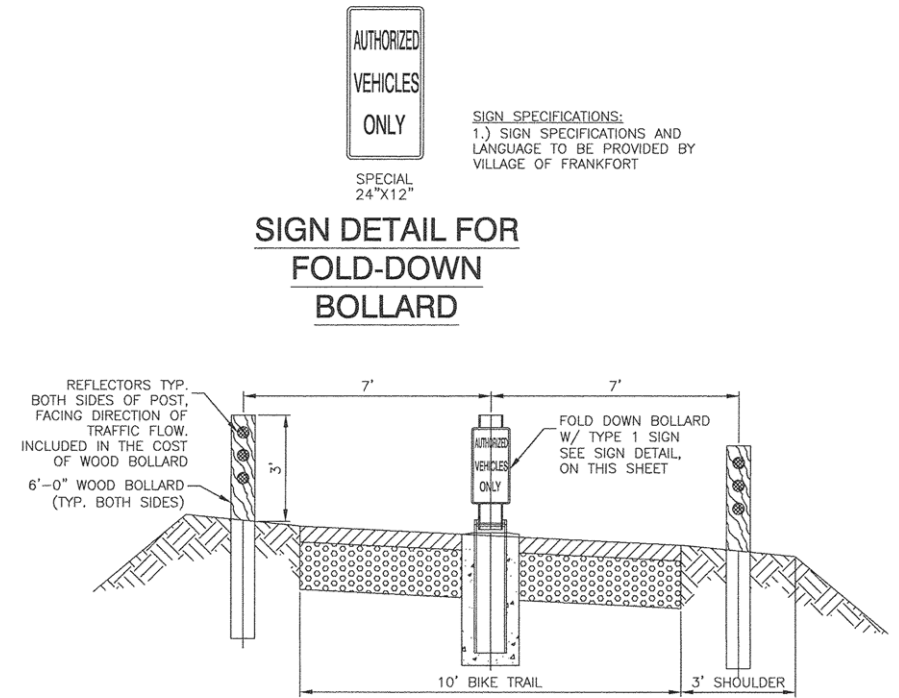
- NOTES:**
1. PROVIDE PRECAST OR CAST-IN-PLACE CONCRETE THRUST BLOCKS OF ADEQUATE SIZE (12" MINIMUM) AND THRUST BEARING SURFACE TO PREVENT MOVEMENT OF PIPELINE UNDER PRESSURE.
 2. PLACE THE BASE AND THE THRUST BEARING SIDES OF THRUST BLOCK DIRECTLY AGAINST UNDISTURBED EARTH.
 3. PLACE THRUST BLOCKING SO THE FITTING JOINTS WILL BE ACCESSIBLE FOR REPAIR.

TYPICAL THRUST BLOCK INSTALLATIONS



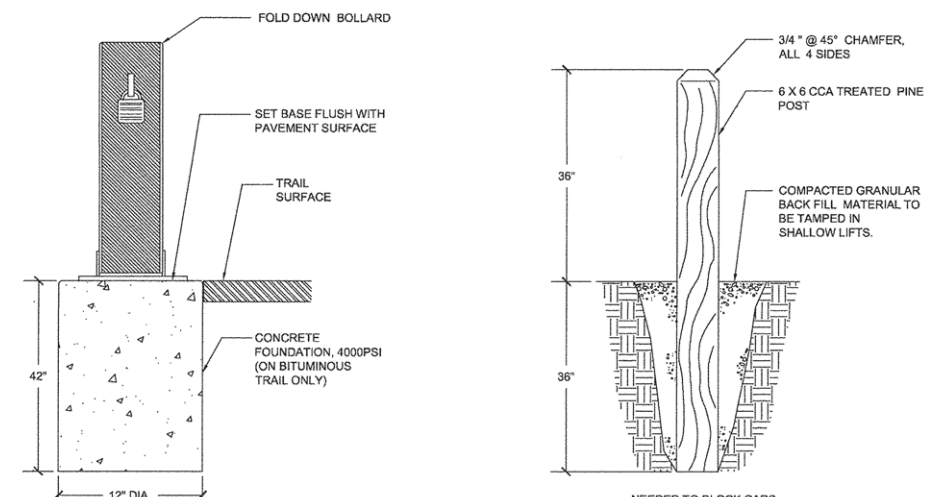
WOOD STREET SIGN RELOCATION

NOT TO SCALE



FOLD DOWN BOLLARD INSTALLATION DETAIL

NOT TO SCALE



- NOTES:**
1. BOLLARDS SHALL BE DOUBLE POST MODEL WITH DOUBLE LOCKS AND OPTIONAL PIN.
 2. INSTALL SO THAT BOLLARD LIES FLAT ON PAVEMENT WHEN UNLOCKED. OPEN BOLLARD TO BE FLUSH WITH PAVEMENT AND PARALLEL TO EDGES OF TRAIL.

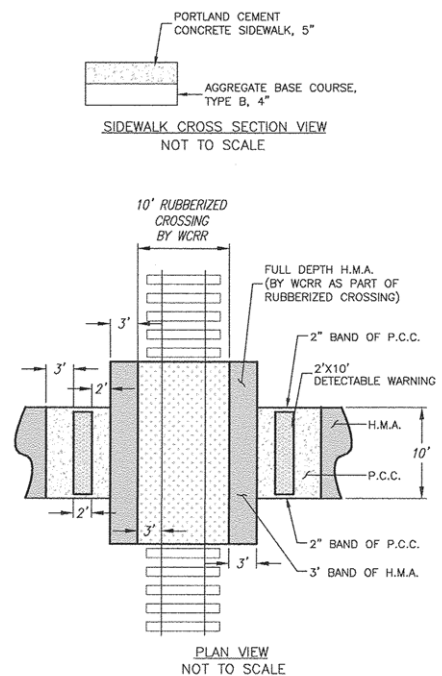
FOLD DOWN BOLLARD

NOT TO SCALE

WOOD BOLLARD

NOT TO SCALE

BOLLARDS



**SIDEWALK ADJACENT TO
RAILROAD CROSSING**

NOT TO SCALE

FILE NAME = 12691_02-DTSL-01 - IDOT P01

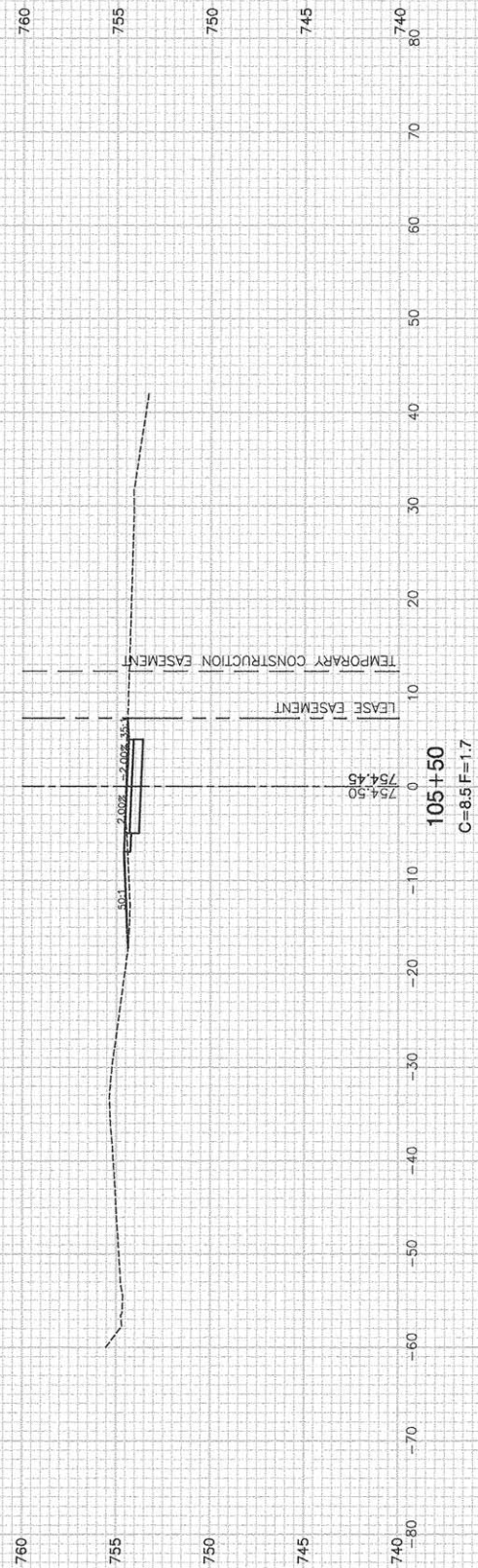
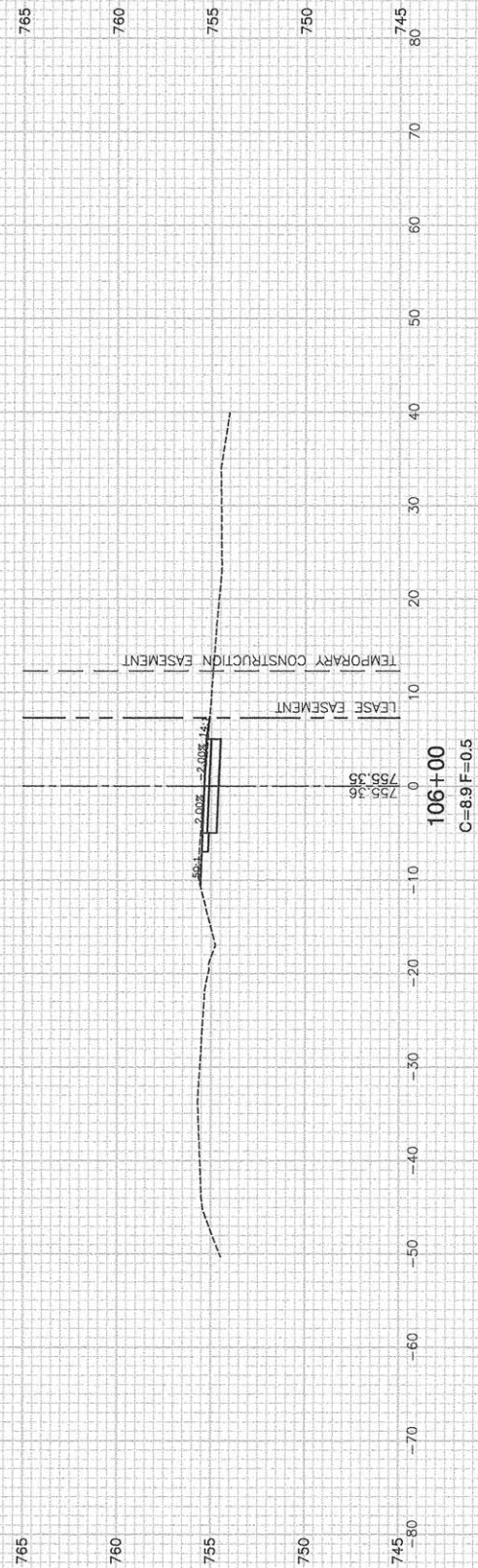
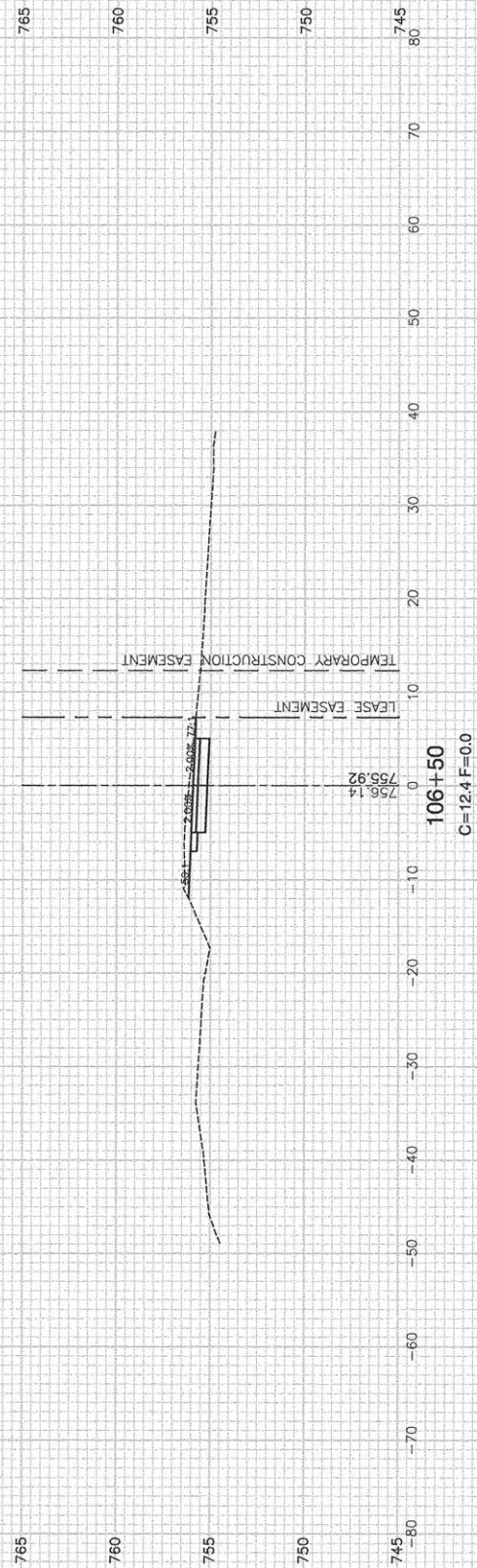
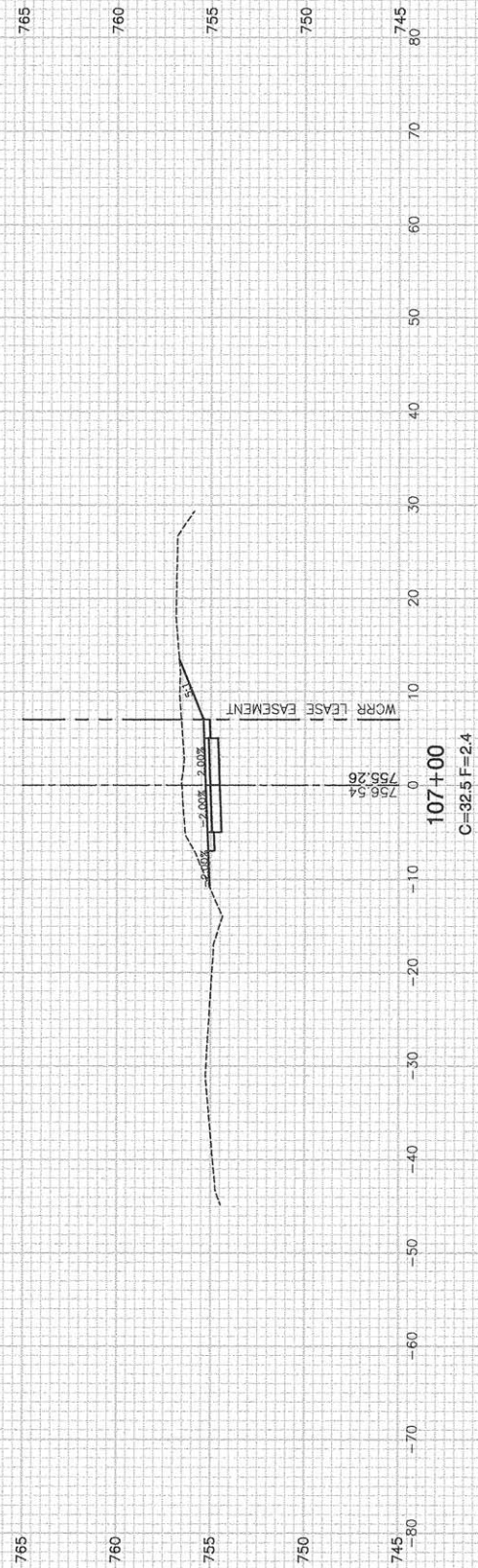
USER NAME =	DESIGNED -- TAG	REVISED --
	CHECKED -- JMN	REVISED --
PLOT SCALE =	DRAWN -- RG	REVISED --
PLOT DATE = 03-09-16	CHECKED -- AG	REVISED --

STATE OF ILLINOIS
DEPARTMENT OF TRANSPORTATION

F.A.U. 3751 (PFEIFFER ROAD)
MULTI-USE PATH
CONSTRUCTION DETAILS

SCALE: NA SHEET NO. 09 OF 23 SHEETS STA. TO STA.

F.A.U. RTE. 3751	SECTION 13-00050-00-BT	COUNTY WILL	TOTAL SHEETS 23	SHEET NO. 09
FED. ROAD DIST. NO. 1 ILLINOIS			FED. AID PROJECT CMM-4003(307)	



FILE NAME = 12691_02-XSCT-01 - IDOT P(1)

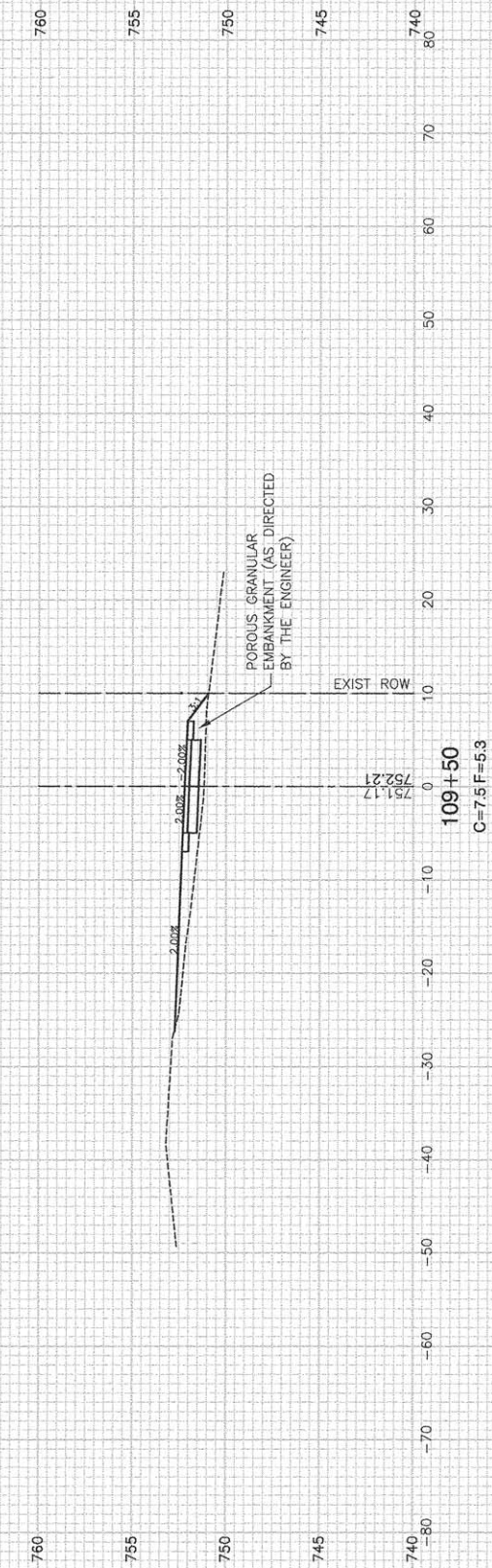
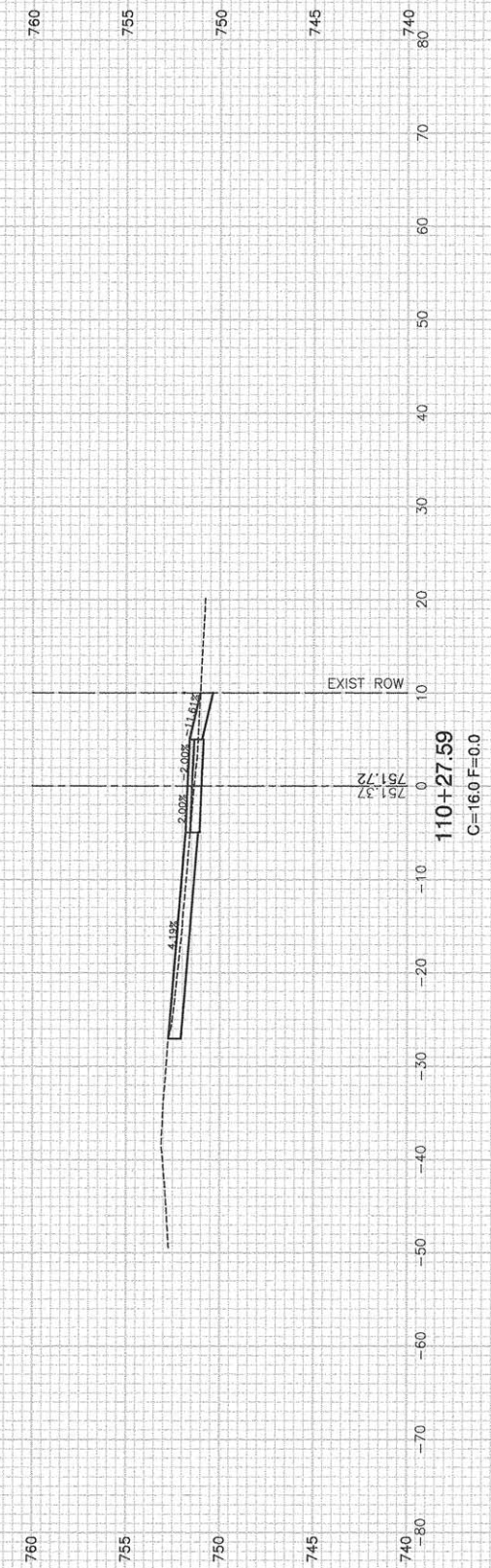
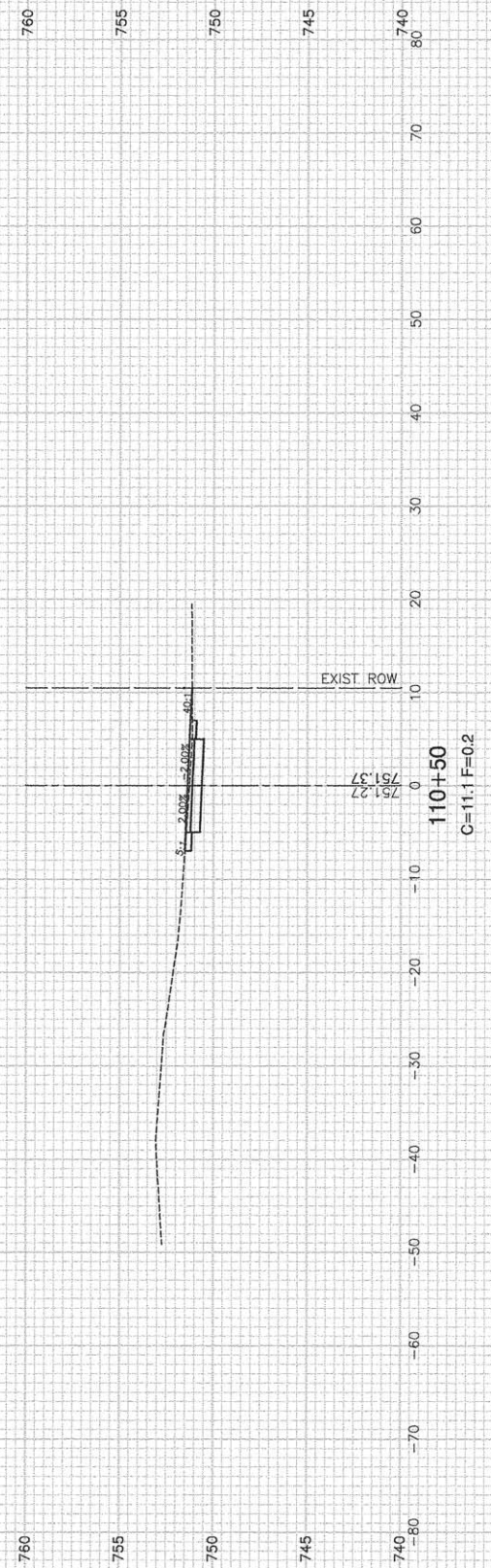
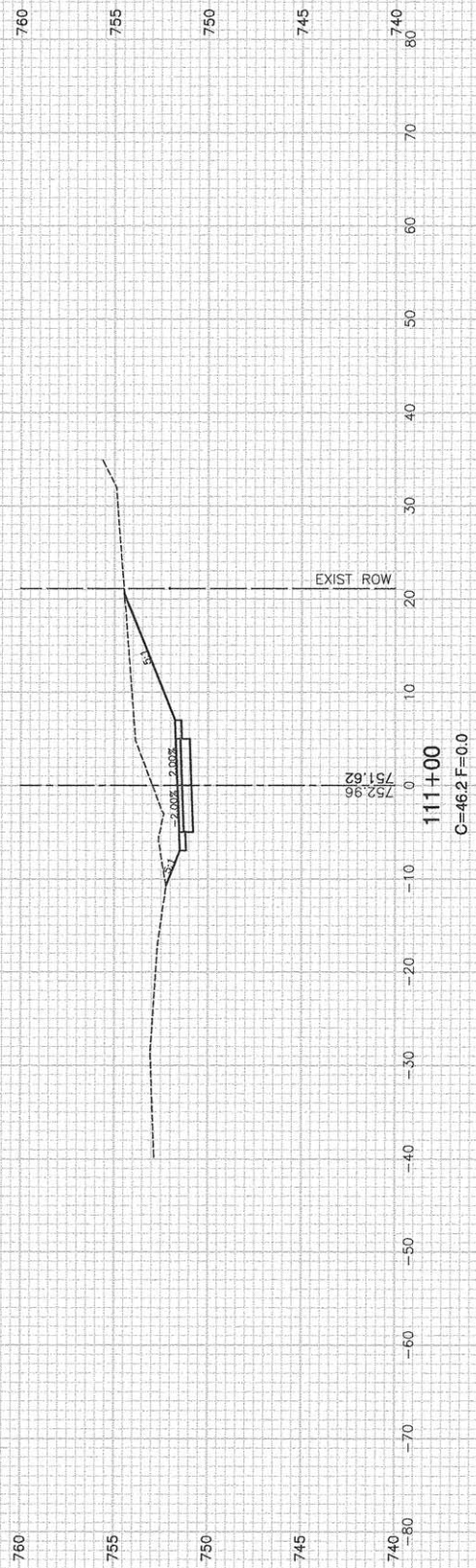
USER NAME =	DESIGNED -- TAG	REVISED --
	CHECKED -- JMN	REVISED --
PLOT SCALE =	DRAWN -- ACAD	REVISED --
PLOT DATE = 03-09-16	CHECKED -- ACAD	REVISED --

STATE OF ILLINOIS
DEPARTMENT OF TRANSPORTATION

F.A.U. 3751 (PFEIFFER ROAD)
MULTI-USE PATH
CROSS SECTIONS

SCALE: SHEET NO. 10 OF 23 SHEETS STA. TO STA.

F.A.U. RTE. 3751	SECTION 13-00050-00-BT	COUNTY WILL	TOTAL SHEETS 23	SHEET NO. 10
FED. ROAD DIST. NO. 1		ILLINOIS	FED. AID PROJECT CMM-4003(307)	
CONTRACT NO. 61B46				

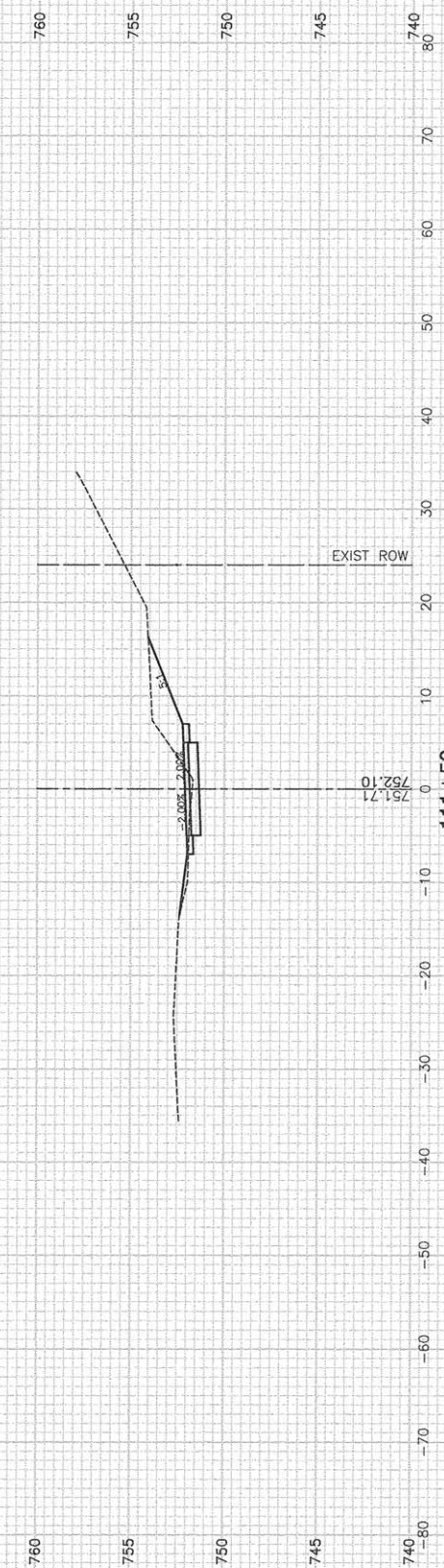
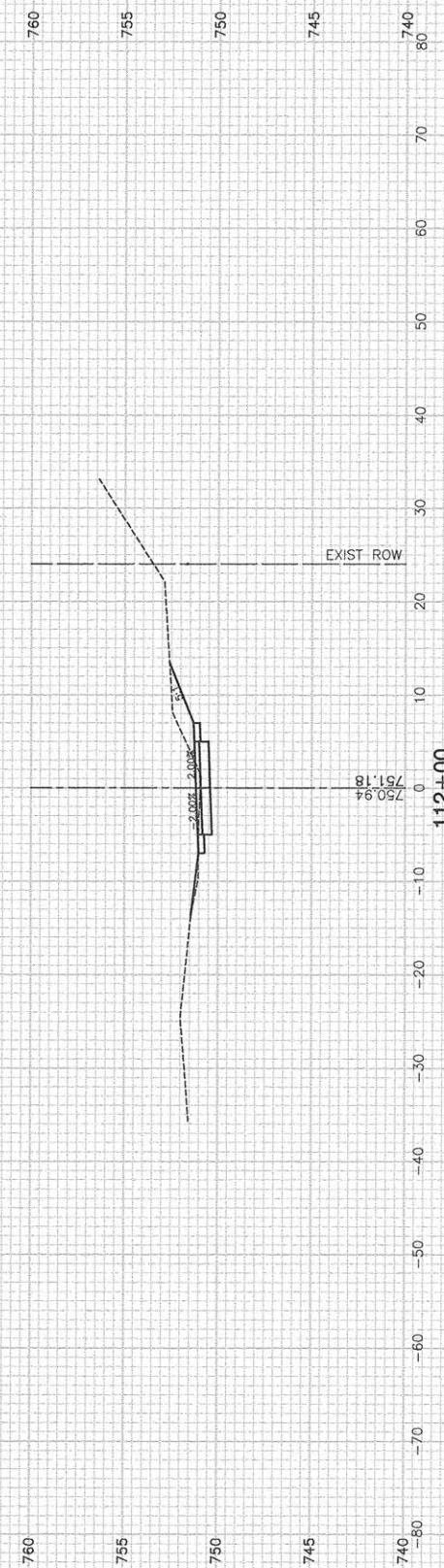
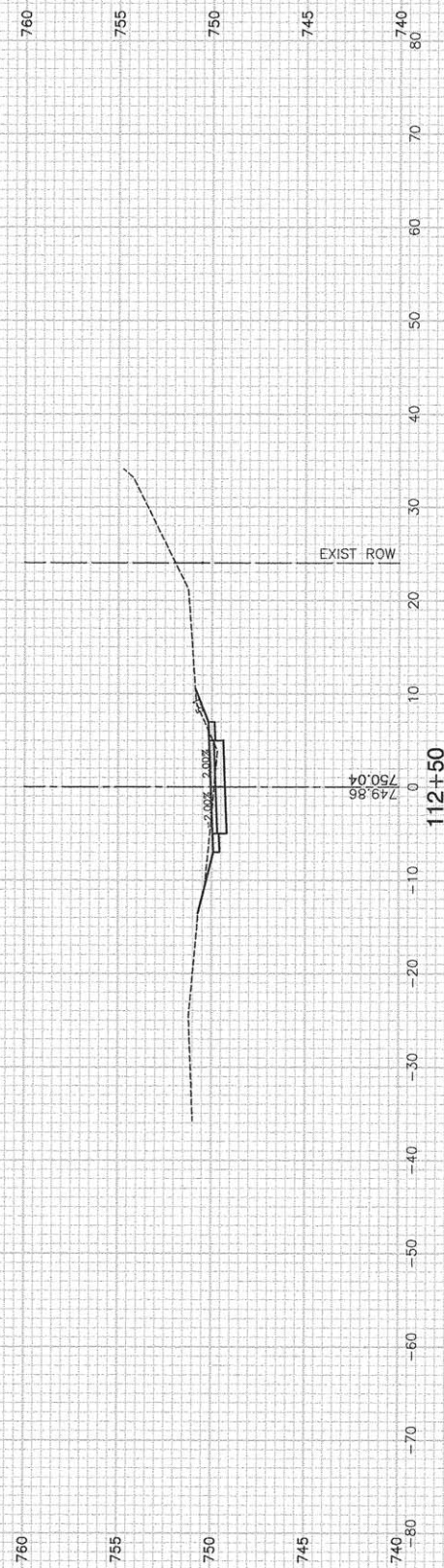
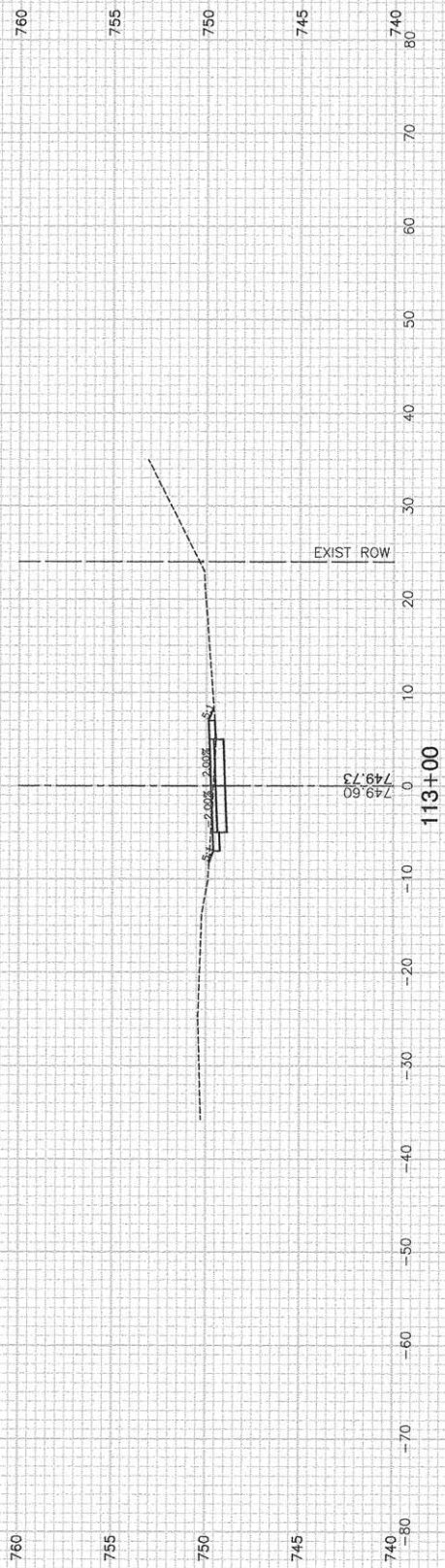


FILE NAME = 12891_02-XSCT-01 - IDOT P(8)

USER NAME =	DESIGNED -- TAG	REVISED --
	CHECKED -- JMN	REVISED --
PLOT SCALE =	DRAWN -- ACAD	REVISED --
PLOT DATE = 03-09-16	CHECKED -- ACAD	REVISED --

**STATE OF ILLINOIS
DEPARTMENT OF TRANSPORTATION**

F.A.U. 3751 (PFEIFFER ROAD)		F.A.U. RTE. 3751	SECTION 13-00050-00-BT	COUNTY WILL	TOTAL SHEETS 23	SHEET NO. 12
SCALE:		SHEET NO. 12	OF 23 SHEETS	STA. TO STA.	CONTRACT NO. 61B46	
		FED. ROAD DIST. NO. 1		ILLINOIS	FED. AID PROJECT CMM-4003(307)	



FILE NAME = 12691_02-XSCT-01 - IDOT P(4)

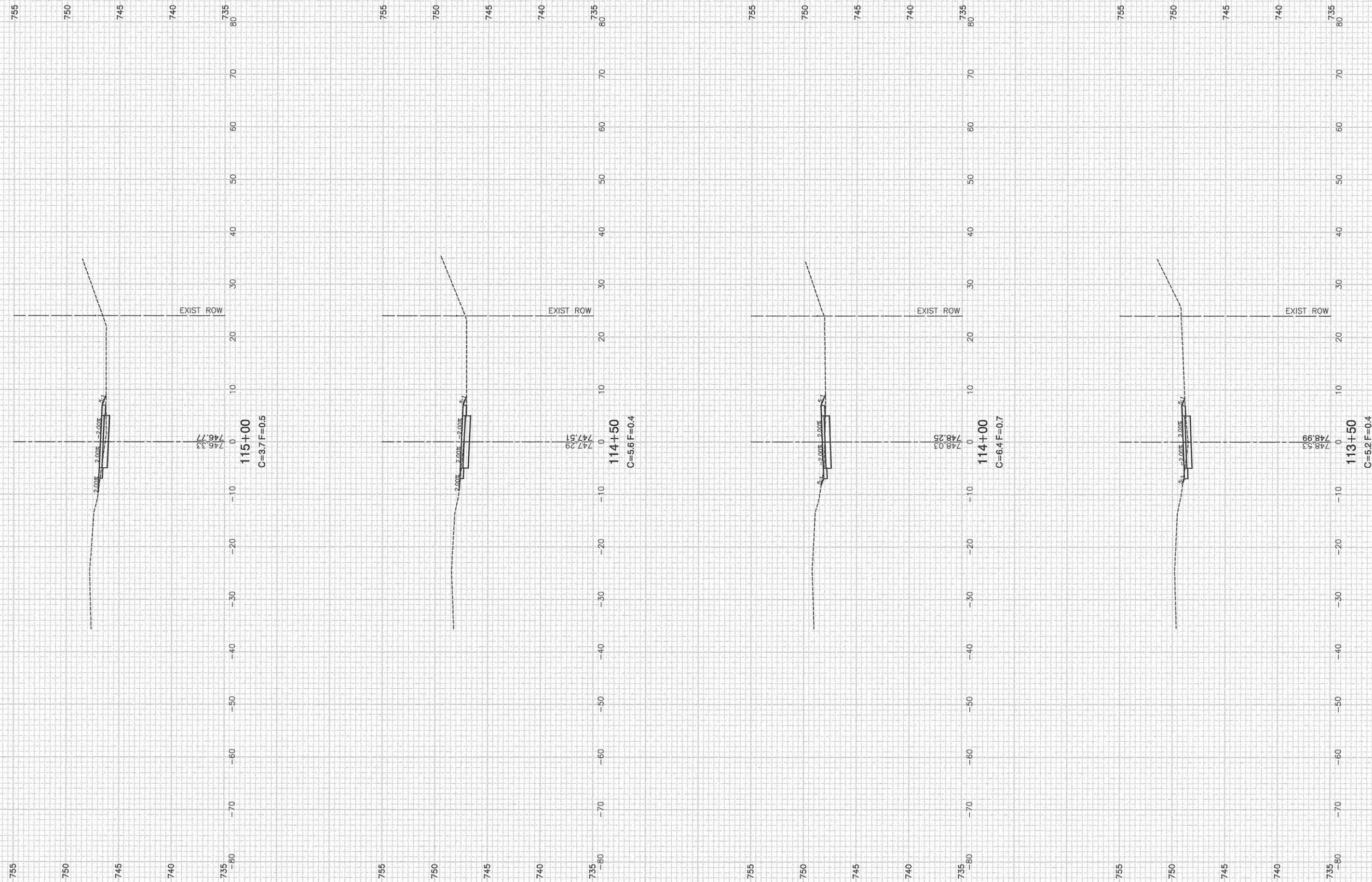
USER NAME =	DESIGNED -- TAG	REVISED --
	CHECKED -- JMN	REVISED --
PLOT SCALE =	DRAWN -- ACAD	REVISED --
PLOT DATE = 03-09-16	CHECKED -- ACAD	REVISED --

**STATE OF ILLINOIS
DEPARTMENT OF TRANSPORTATION**

F.A.U. 3751 (PFEIFFER ROAD)
MULTI-USE PATH
CROSS SECTIONS

SCALE: SHEET NO. 13 OF 23 SHEETS STA. TO STA.

F.A.U. RTE.	SECTION	COUNTY	TOTAL SHEETS	SHEET NO.
3751	13-00050-00-BT	WILL	23	13
FED. ROAD DIST. NO. 1 ILLINOIS FED. AID PROJECT CMM-4003(307)			CONTRACT NO. 61B46	



FILE NAME = 12691_02-XSCT-01 - IDOT P(5)

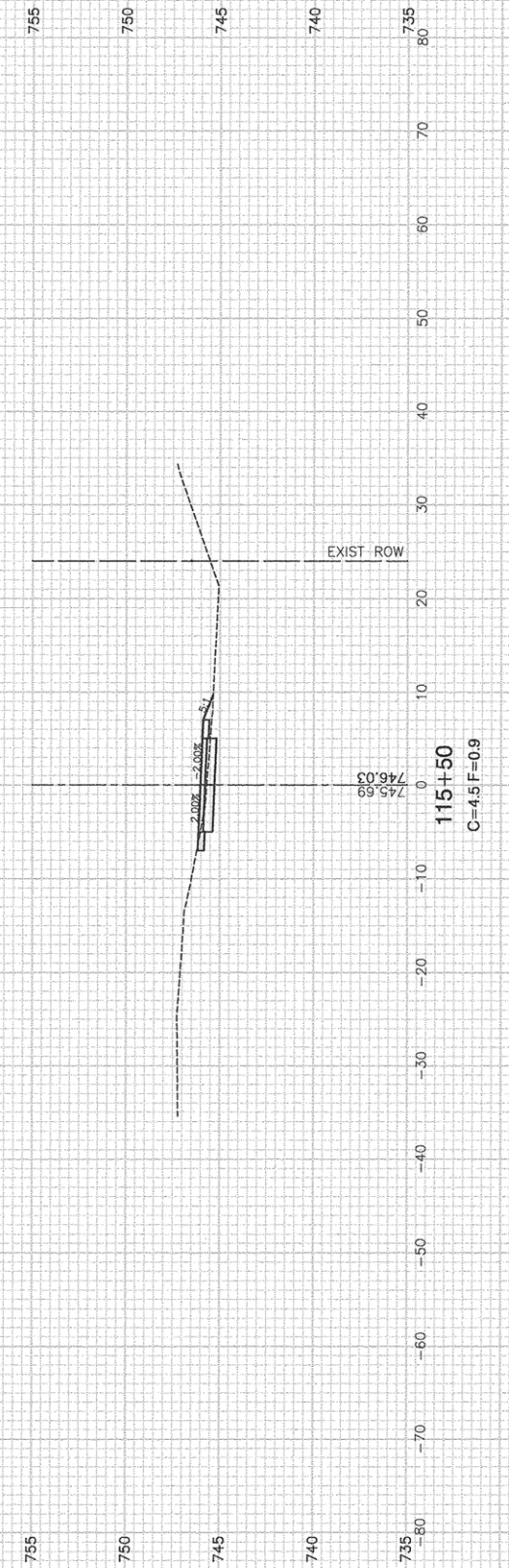
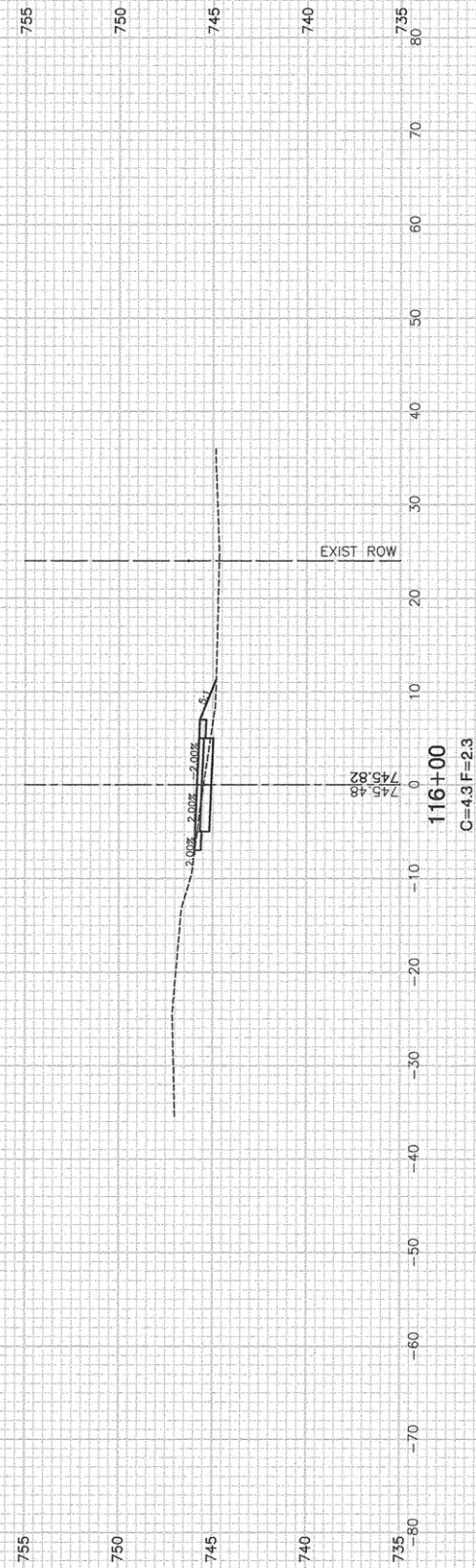
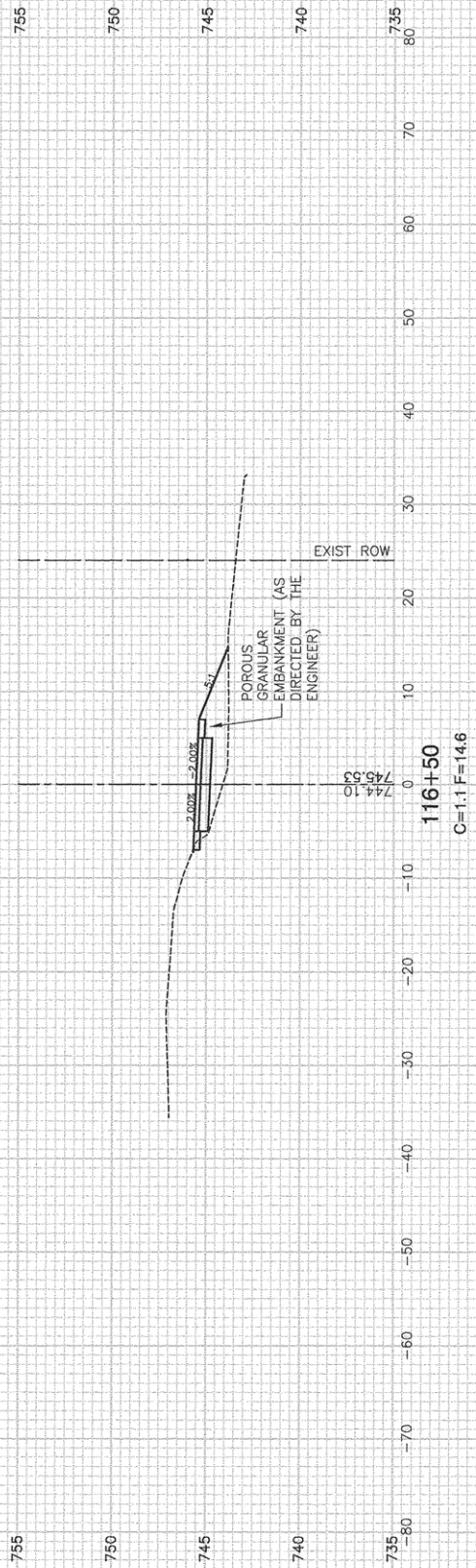
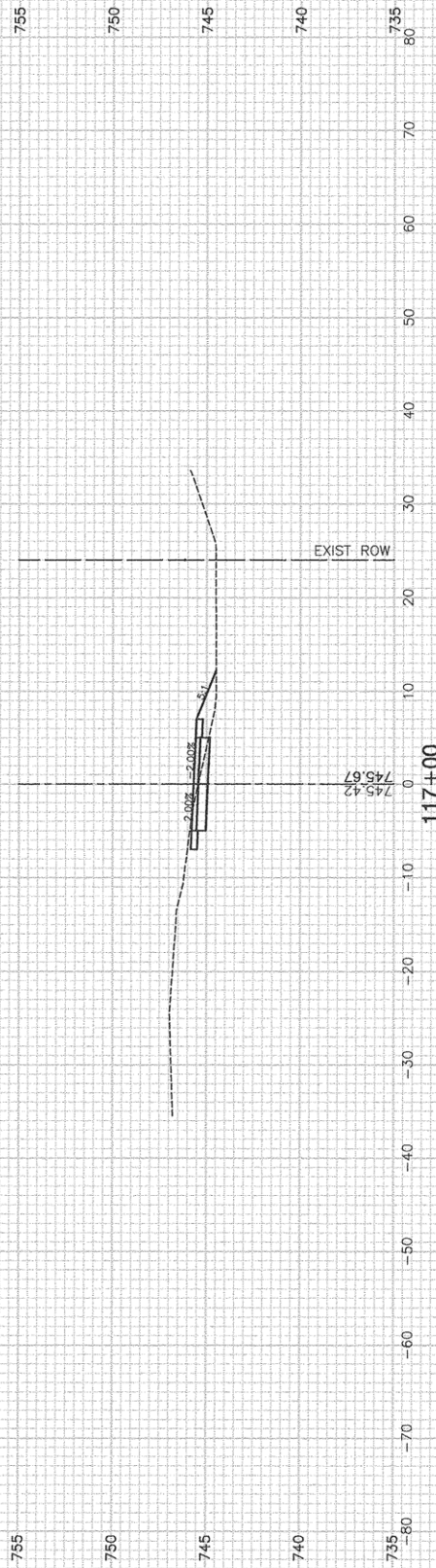
USER NAME =	DESIGNED -- TAG	REVISED --
	CHECKED -- JMN	REVISED --
PLOT SCALE =	DRAWN -- ACAD	REVISED --
PLOT DATE = 03-09-16	CHECKED -- ACAD	REVISED --

STATE OF ILLINOIS
DEPARTMENT OF TRANSPORTATION

F.A.U. 3751 (PFEIFFER ROAD)
MULTI-USE PATH
CROSS SECTIONS

SCALE: SHEET NO. 14 OF 23 SHEETS STA. TO STA.

F.A.U. RTE. 3751	SECTION 13-00050-00-BT	COUNTY WILL	TOTAL SHEETS 23	SHEET NO. 14
FED. ROAD DIST. NO. 1 ILLINOIS			FED. AID PROJECT CMM-4003(307)	
CONTRACT NO. 61B46				



FILE NAME = 12691_02.XSCT-01 - IDOT P(6)

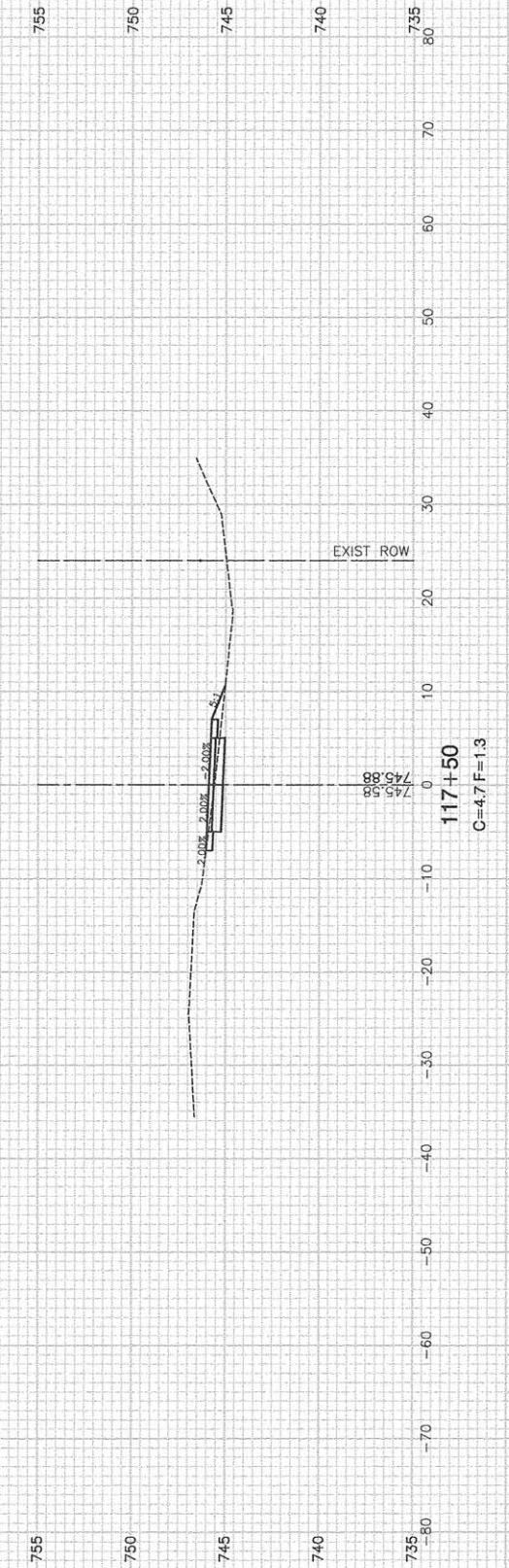
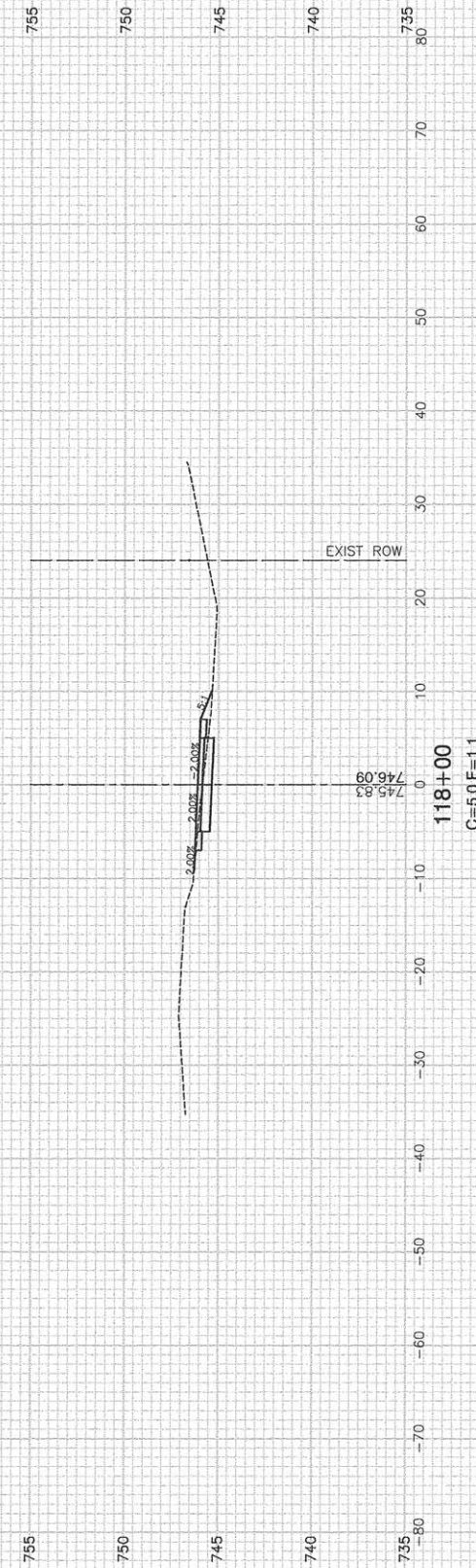
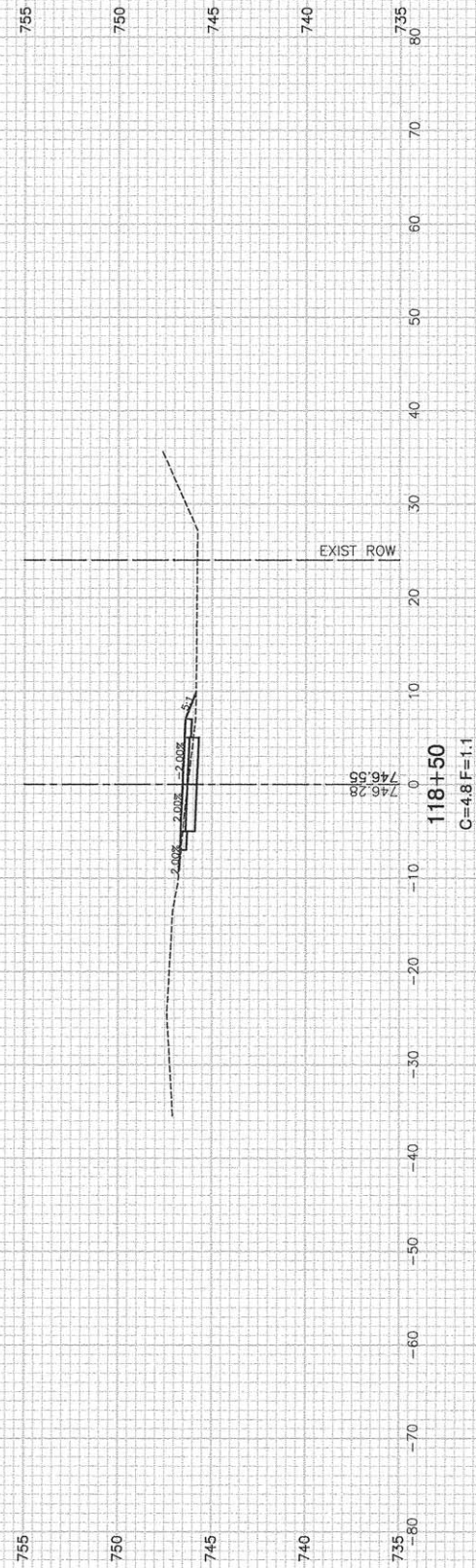
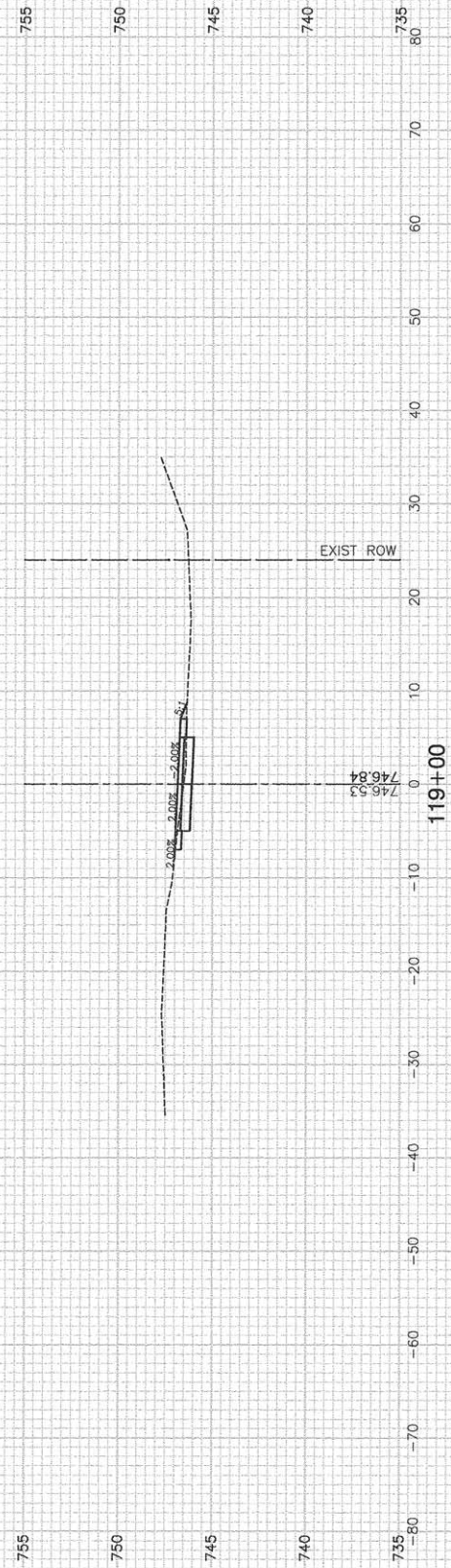
USER NAME =	DESIGNED -- TAG	REVISED --
	CHECKED -- JMN	REVISED --
PLOT SCALE =	DRAWN -- ACAD	REVISED --
PLOT DATE = 03-09-16	CHECKED -- ACAD	REVISED --

STATE OF ILLINOIS
DEPARTMENT OF TRANSPORTATION

F.A.U. 3751 (PFEIFFER ROAD)
MULTI-USE PATH
CROSS SECTIONS

SCALE: SHEET NO. 15 OF 23 SHEETS STA. TO STA.

F.A.U. RTE. 3751	SECTION 13-00050-00-BT	COUNTY WILL	TOTAL SHEETS 23	SHEET NO. 15
FED. ROAD DIST. NO. 1 ILLINOIS			FED. AID PROJECT CMM-4003(307)	
CONTRACT NO. 61B46				



FILE NAME = 12691_02-XSCT-01 - IDOT P(7)

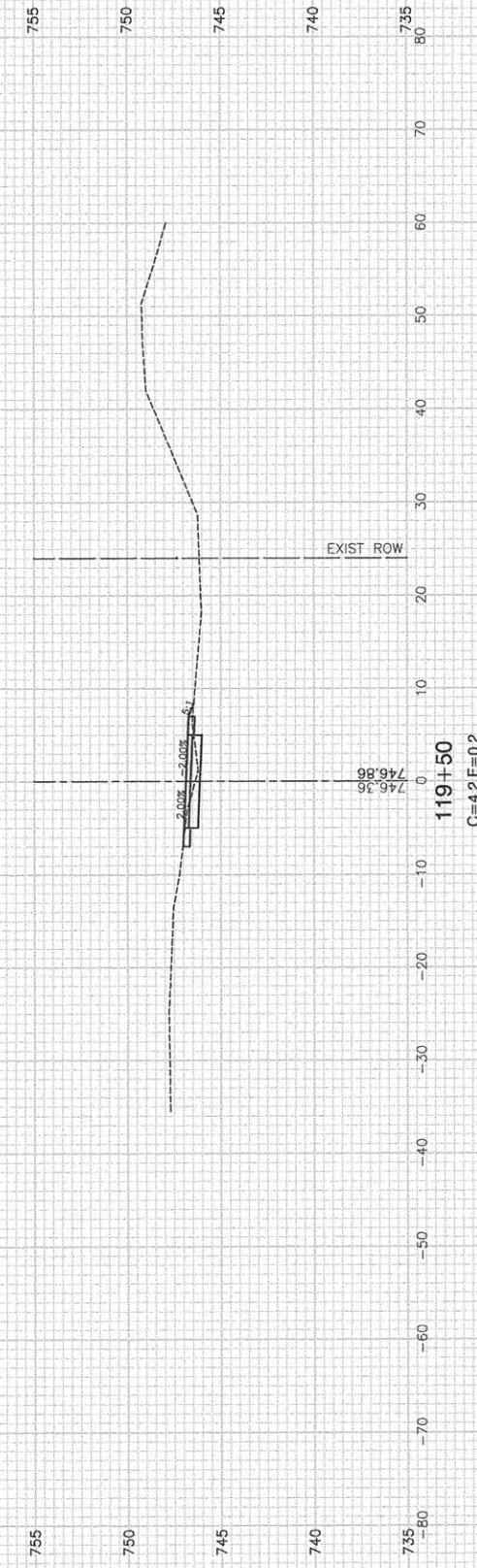
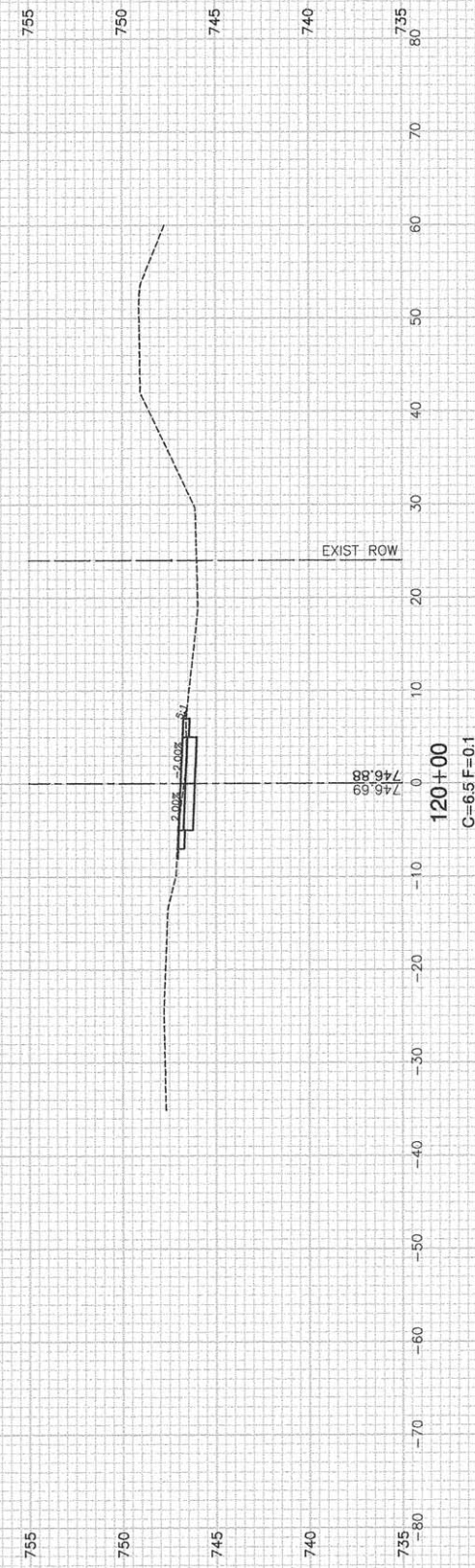
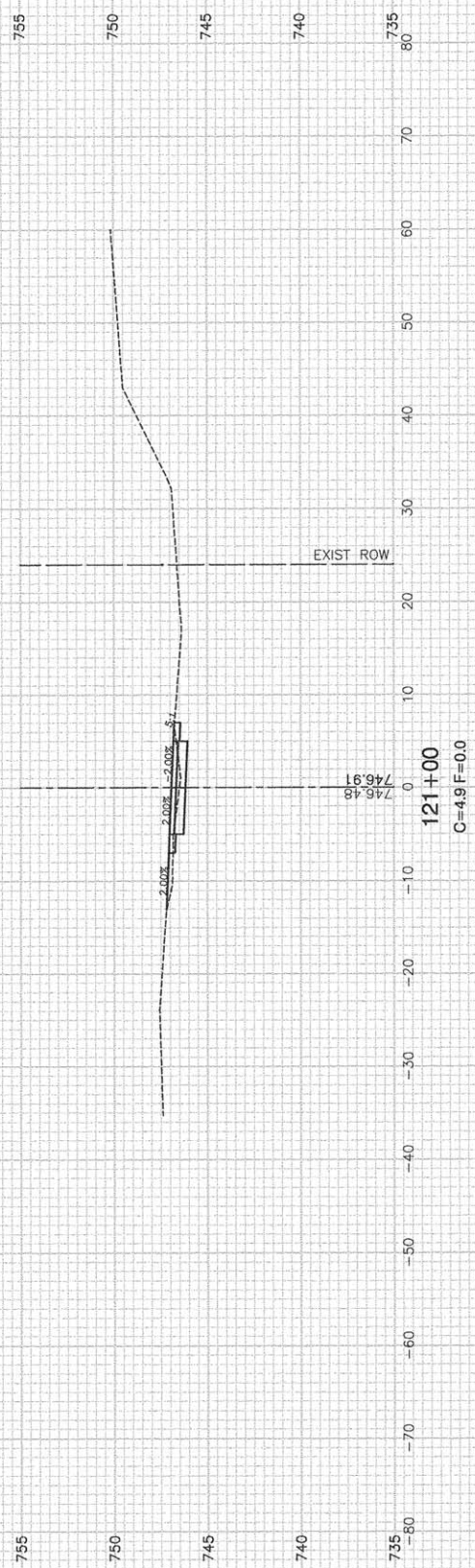
USER NAME =	DESIGNED -- TAG	REVISED --
	CHECKED -- JMN	REVISED --
PLOT SCALE =	DRAWN -- ACAD	REVISED --
PLOT DATE = 03-09-16	CHECKED -- ACAD	REVISED --

STATE OF ILLINOIS
DEPARTMENT OF TRANSPORTATION

F.A.U. 3751 (PFEIFFER ROAD)
MULTI-USE PATH
CROSS SECTIONS

F.A.U. RTE. 3751	SECTION 13-00050-00-BT	COUNTY WILL	TOTAL SHEETS 23	SHEET NO. 16
FED. ROAD DIST. NO. 1 ILLINOIS			FED. AID PROJECT CMM-4003(307)	

SCALE: SHEET NO. 16 OF 23 SHEETS STA. TO STA.



FILE NAME = 12891_02.XSCT-01 - IDOT P(8)

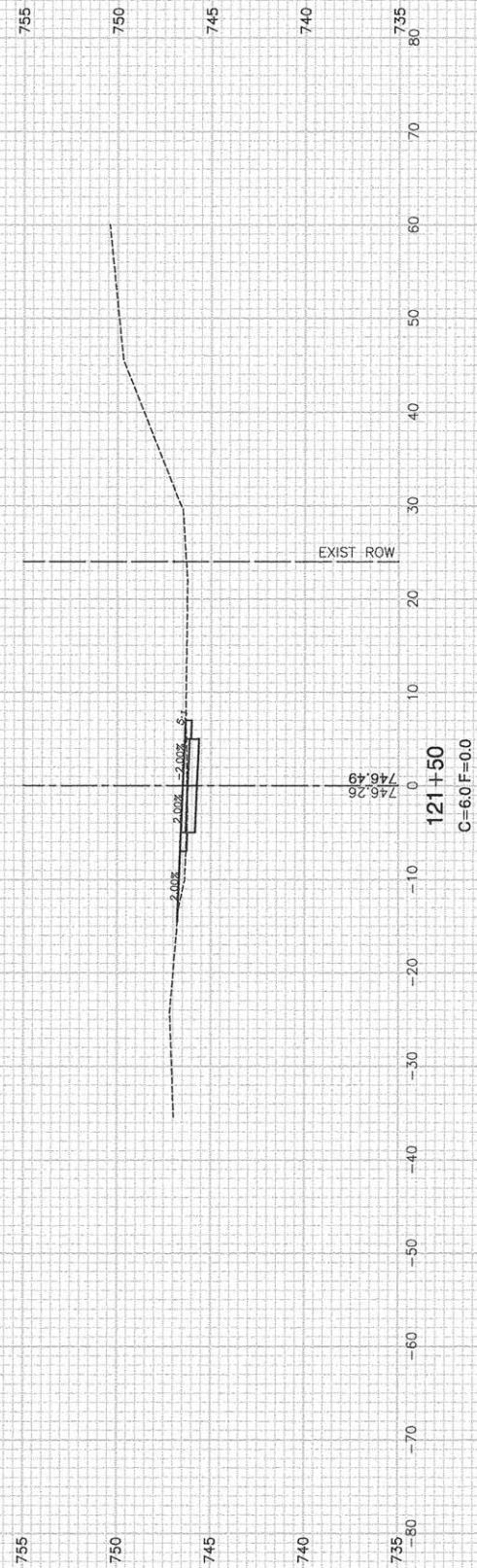
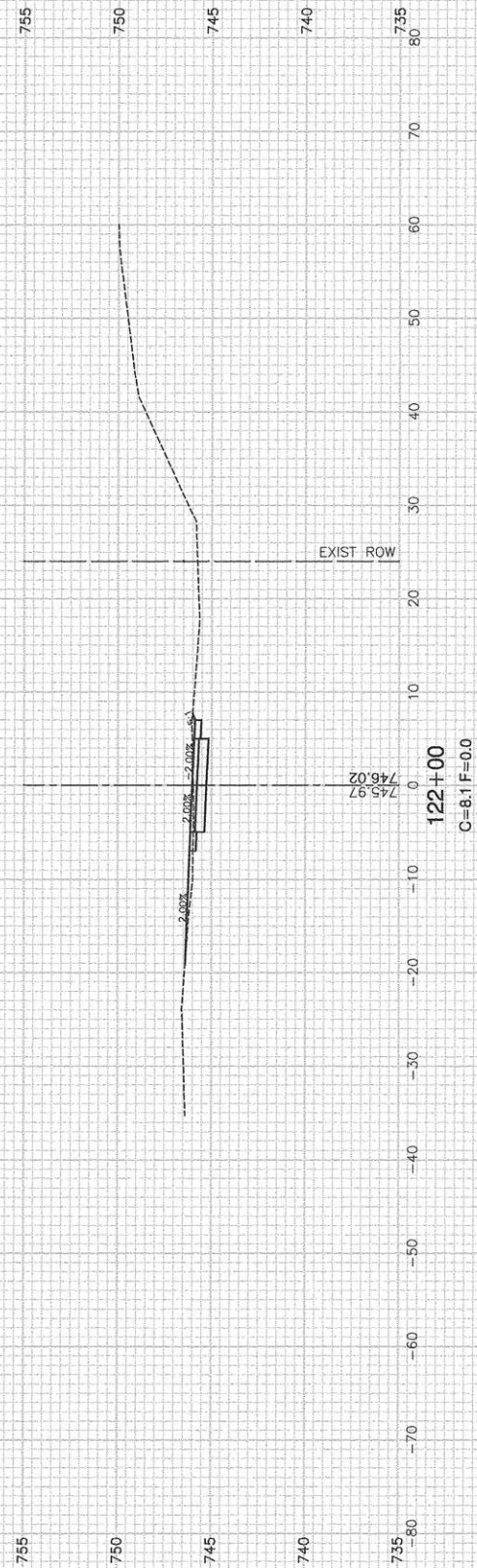
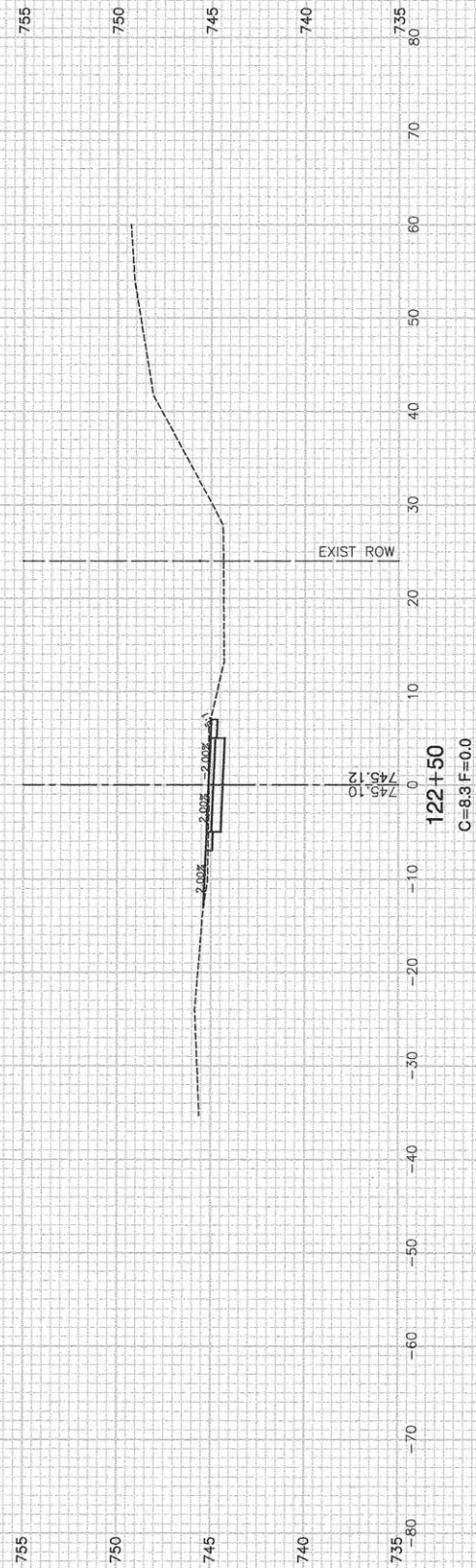
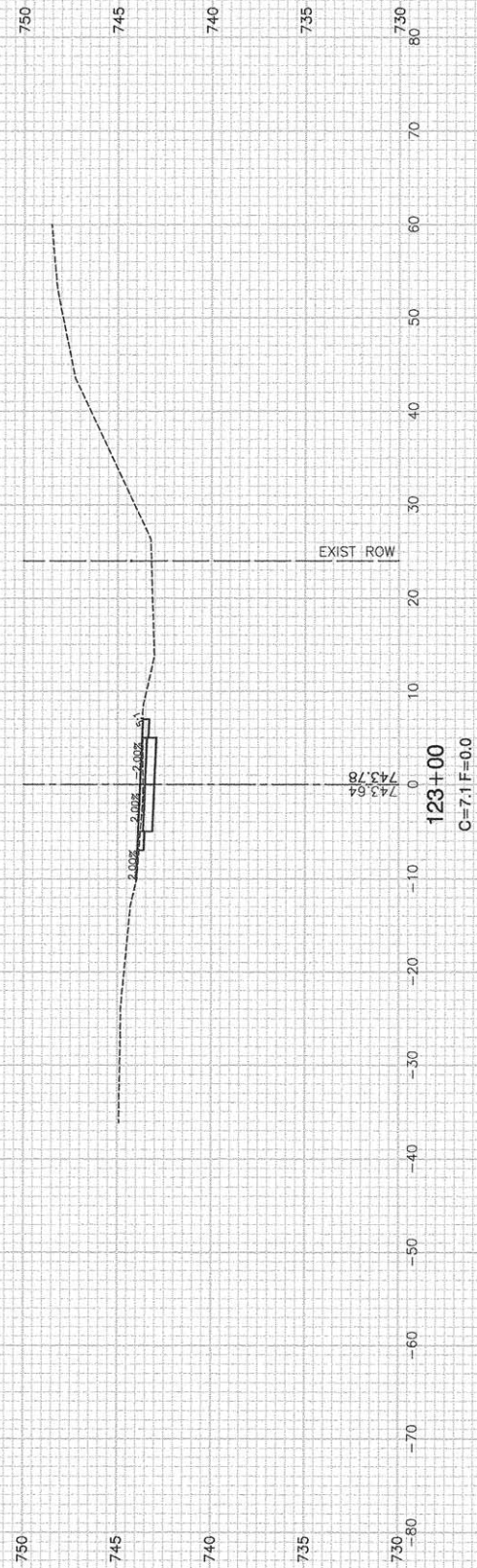
USER NAME =	DESIGNED -- TAG	REVISED --
	CHECKED -- JMN	REVISED --
PLOT SCALE =	DRAWN -- ACAD	REVISED --
PLOT DATE = 03-09-16	CHECKED -- ACAD	REVISED --

**STATE OF ILLINOIS
DEPARTMENT OF TRANSPORTATION**

**F.A.U. 3751 (PFEIFFER ROAD)
MULTI-USE PATH
CROSS SECTIONS**

SCALE: SHEET NO. 17 OF 23 SHEETS STA. TO STA.

F.A.U. RTE.	SECTION	COUNTY	TOTAL SHEETS	SHEET NO.
3751	13-00050-00-BT	WILL	23	17
CONTRACT NO. 61B46				
FED. ROAD DIST. NO. 1	ILLINOIS	FED. AID PROJECT	CMM-4003(307)	



FILE NAME = 12691_02.XSCT-01 - IDOT P(9)

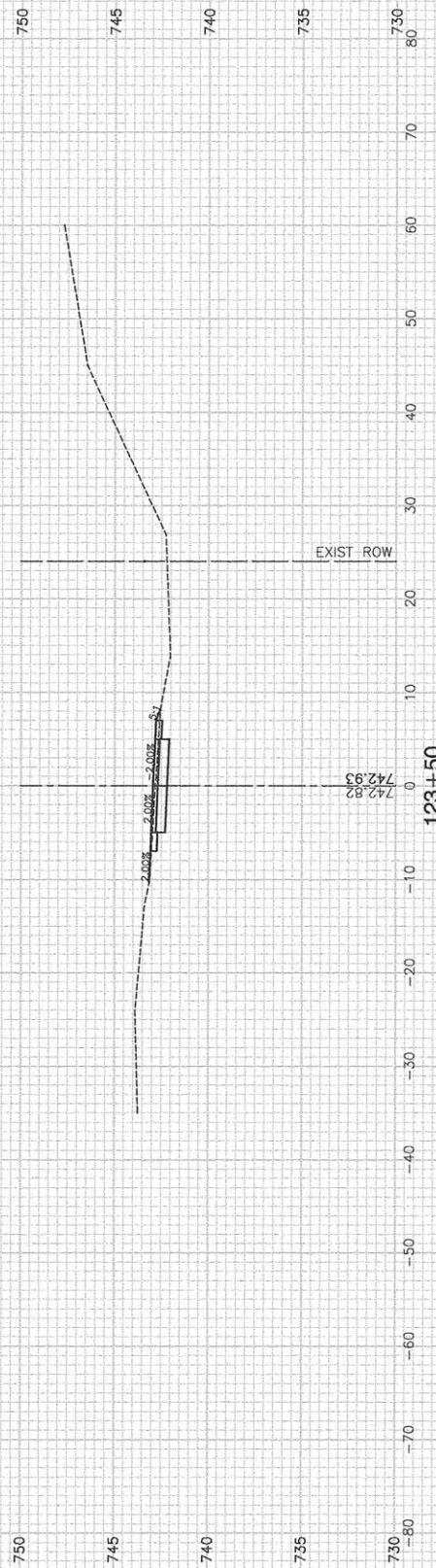
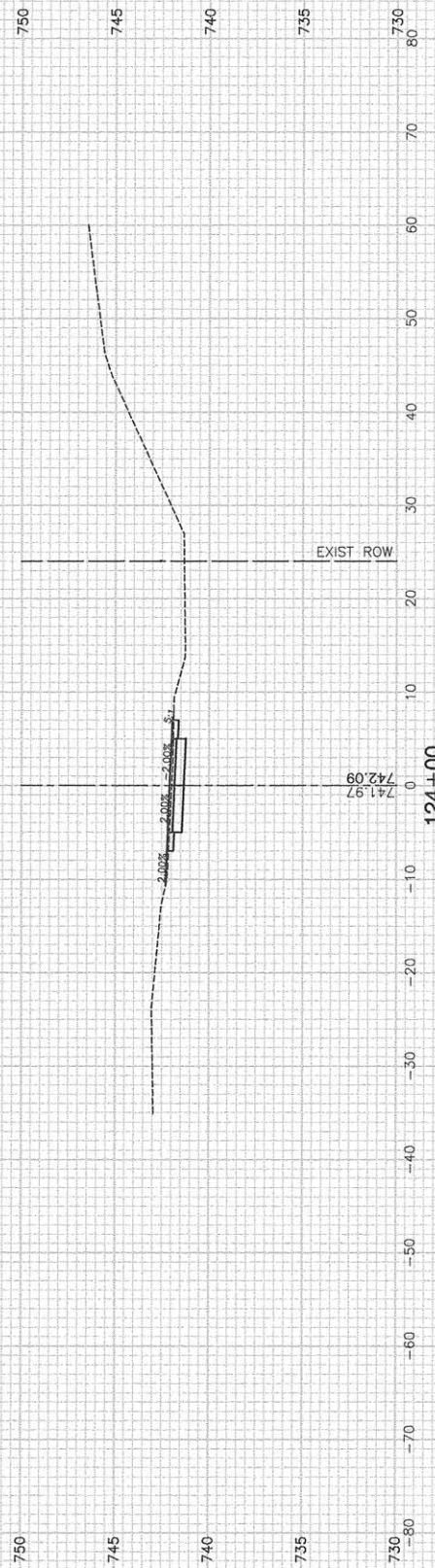
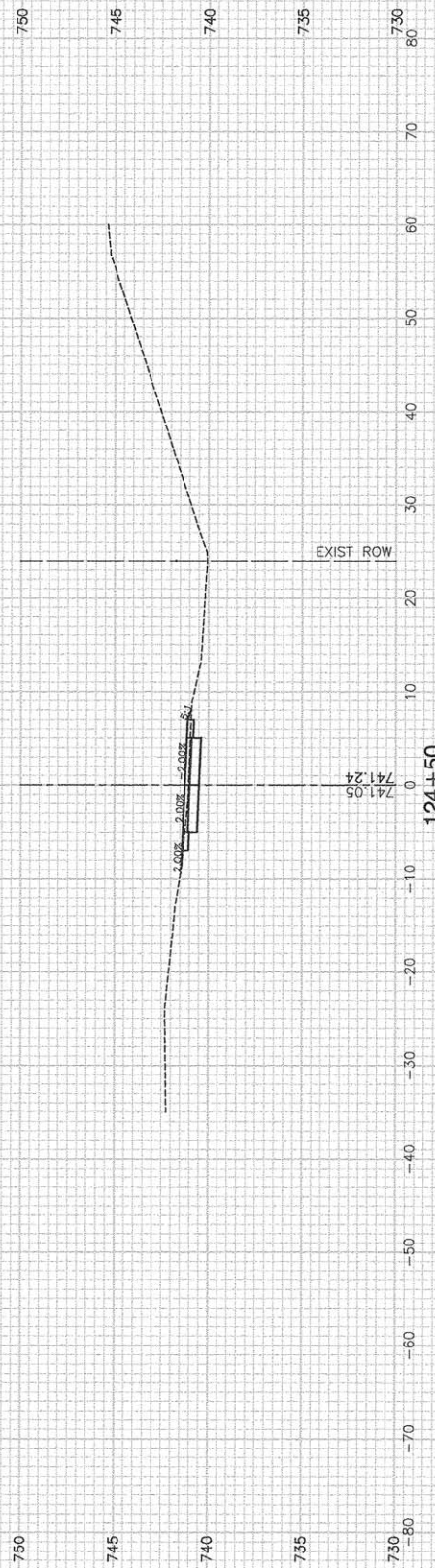
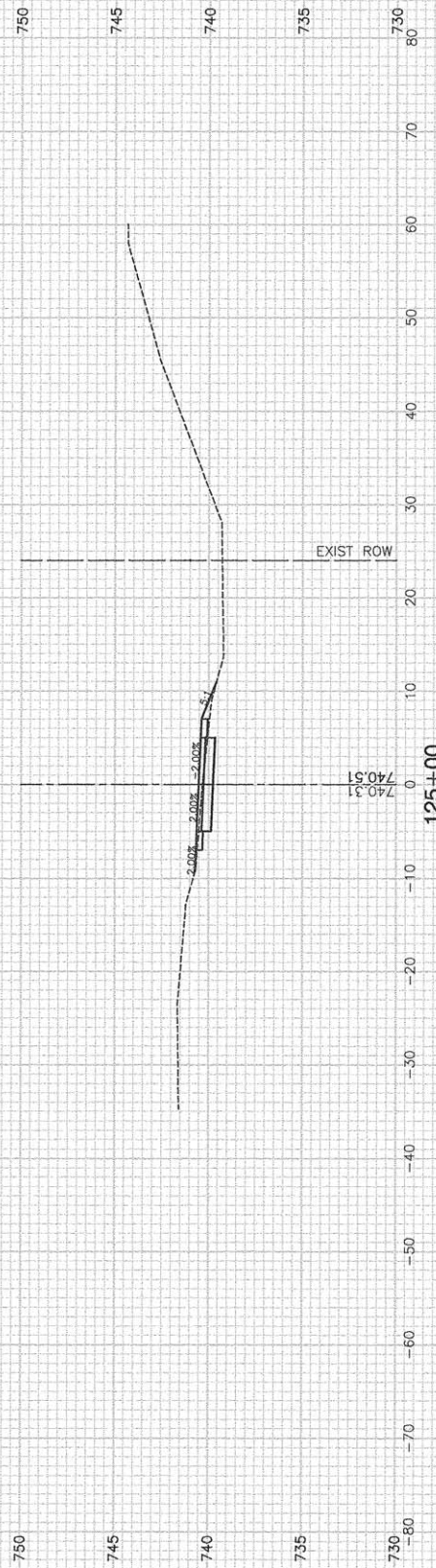
USER NAME =	DESIGNED - TAG	REVISED -
	CHECKED - JMN	REVISED -
PLOT SCALE =	DRAWN - ACAD	REVISED -
PLOT DATE = 03-09-16	CHECKED - ACAD	REVISED -

STATE OF ILLINOIS
DEPARTMENT OF TRANSPORTATION

F.A.U. 3751 (PFEIFFER ROAD)
MULTI-USE PATH
CROSS SECTIONS

SCALE: SHEET NO. 18 OF 23 SHEETS STA. TO STA.

F.A.U. RTE. 3751	SECTION 13-00050-00-BT	COUNTY WILL	TOTAL SHEETS 23	SHEET NO. 18
FED. ROAD DIST. NO. 1		ILLINOIS	FED. AID PROJECT CMM-4003(307)	
		CONTRACT NO. 61B46		



FILE NAME = 12691_02-XSCT-01 - IDOT P(10)

USER NAME =	DESIGNED -- TAG	REVISIONS
	CHECKED -- JMN	REVISIONS
PLOT SCALE =	DRAWN -- ACAD	REVISIONS
PLOT DATE = 03-09-16	CHECKED -- ACAD	REVISIONS

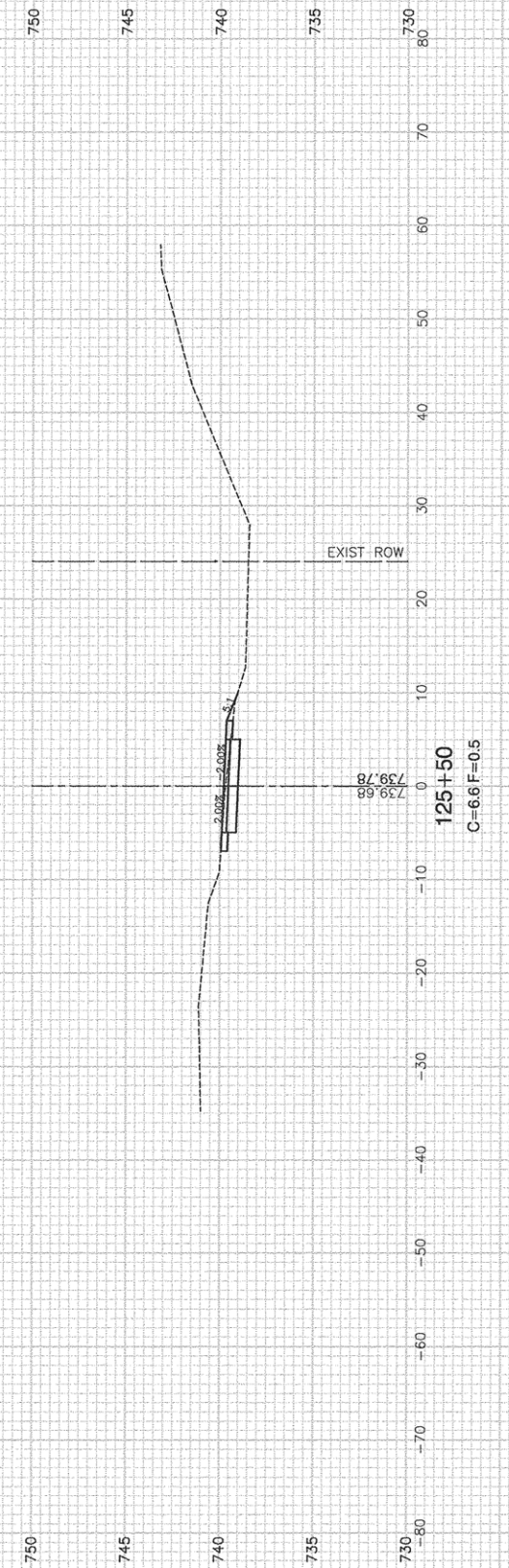
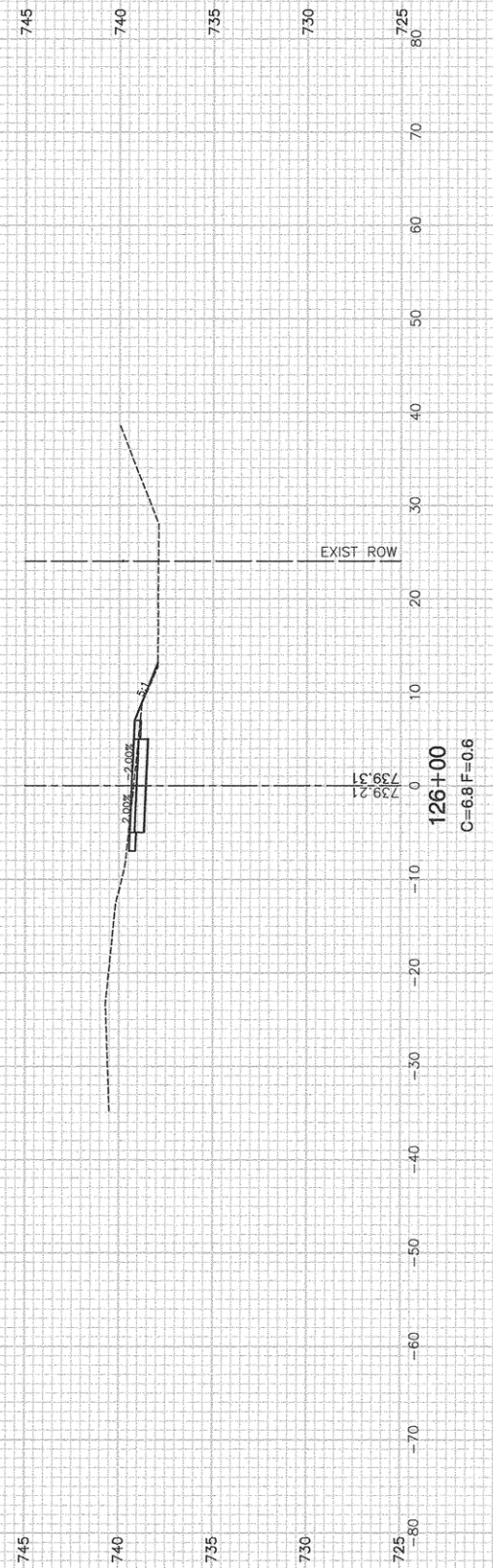
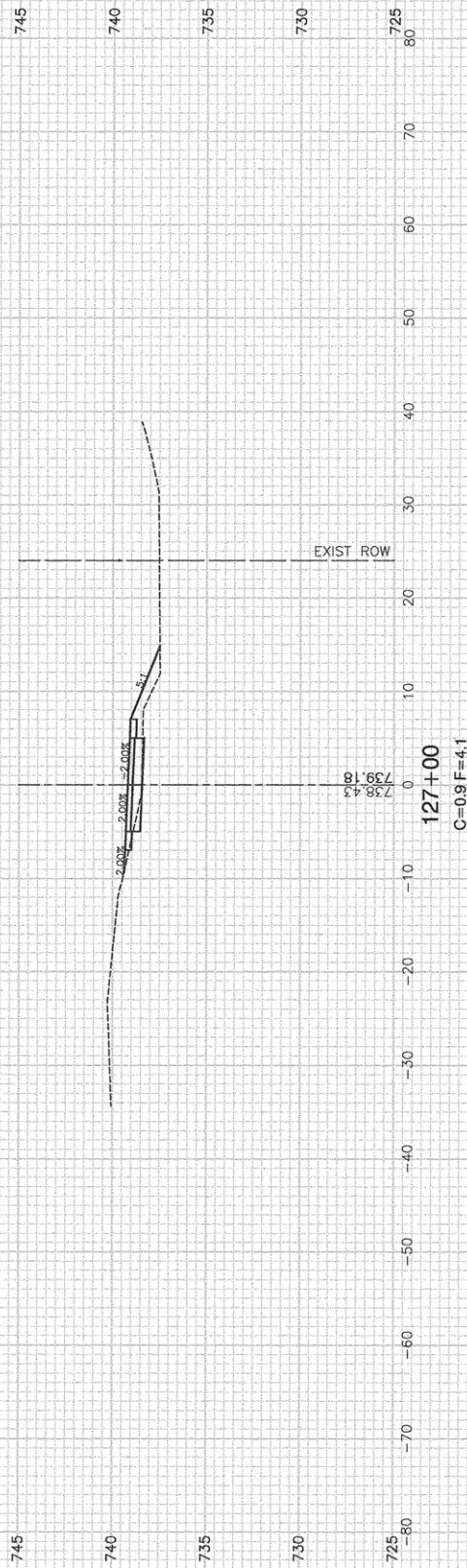
STATE OF ILLINOIS
DEPARTMENT OF TRANSPORTATION

F.A.U. 3751 (PFEIFFER ROAD)
MULTI-USE PATH
CROSS SECTIONS

SCALE: SHEET NO. 19 OF 23 SHEETS STA. TO STA.

F.A.U. RTE. 3751	SECTION 13-00050-00-BT	COUNTY WILL	TOTAL SHEETS 23	SHEET NO. 19
FED. ROAD DIST. NO. 1 ILLINOIS		FED. AID PROJECT CMM-4003(307)		

CONTRACT NO. 61B46



FILE NAME = 12691_02-XSCT-01 - IDOT P(11)

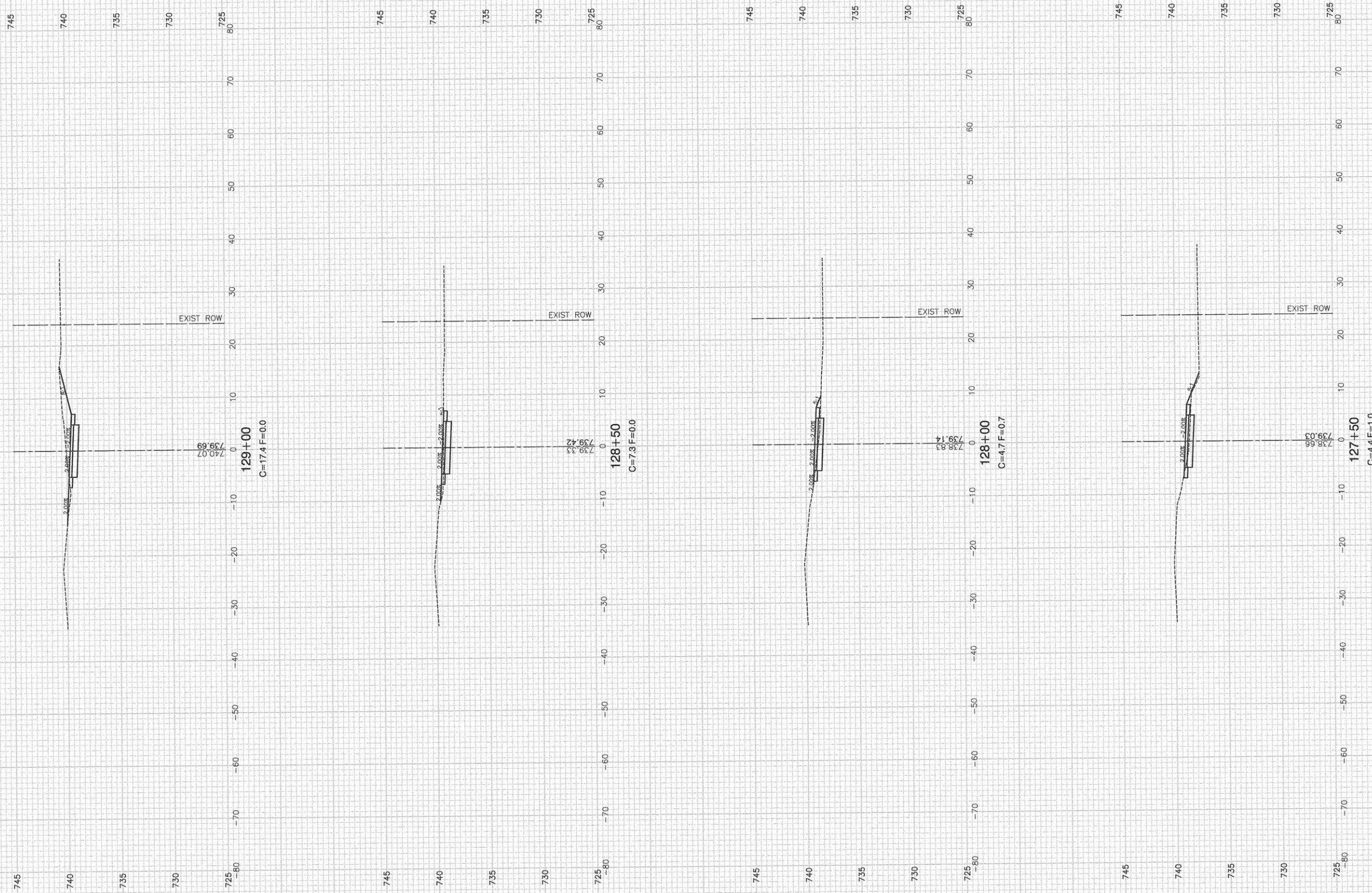
USER NAME =	DESIGNED -- TAG	REVISED --
	CHECKED -- JMN	REVISED --
PLOT SCALE =	DRAWN -- ACAD	REVISED --
PLOT DATE = 03-09-16	CHECKED -- ACAD	REVISED --

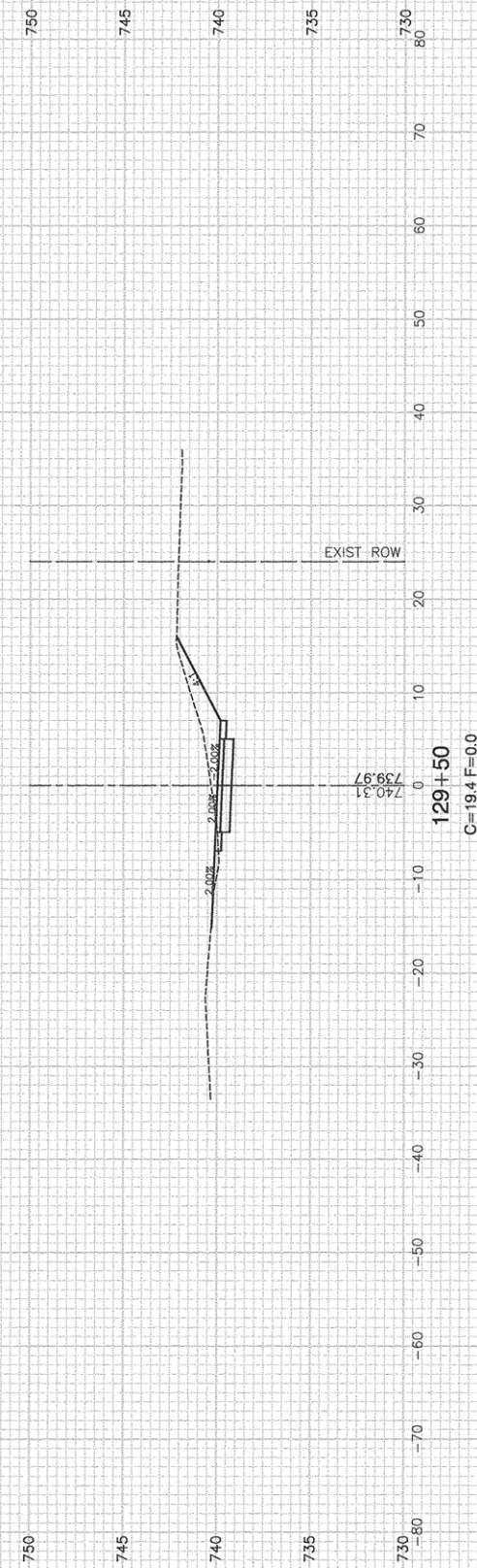
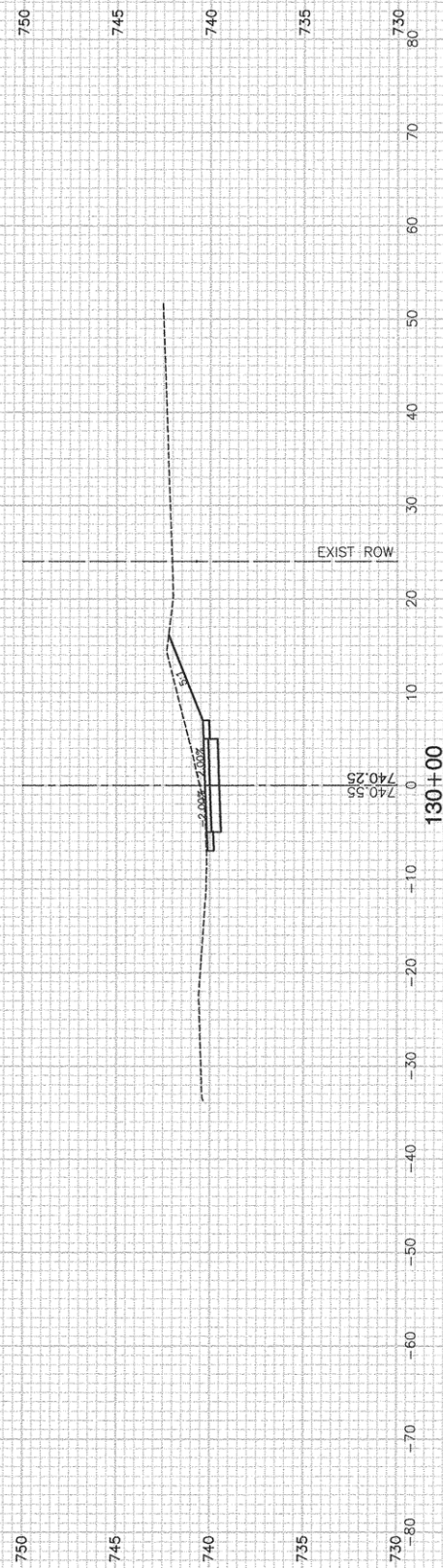
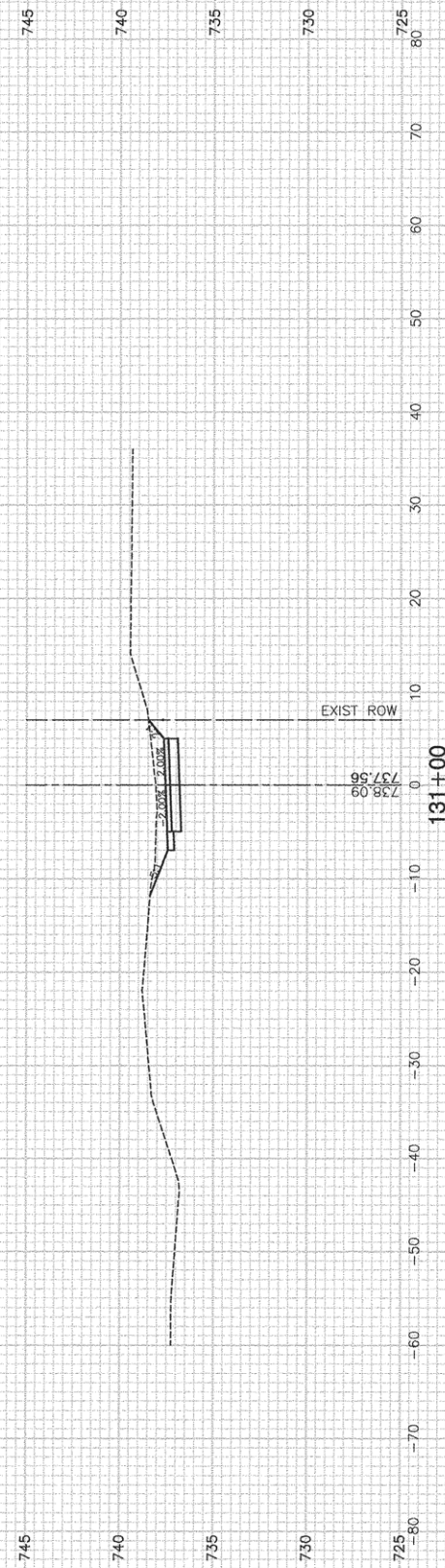
**STATE OF ILLINOIS
DEPARTMENT OF TRANSPORTATION**

F.A.U. 3751 (PFEIFFER ROAD)
MULTI-USE PATH
CROSS SECTIONS

SCALE: SHEET NO. 20 OF 23 SHEETS STA. TO STA.

F.A.U. RTE. 3751	SECTION 13-00050-00-BT	COUNTY WILL	TOTAL SHEETS 23	SHEET NO. 20
FED. ROAD DIST. NO. 1 ILLINOIS			FED. AID PROJECT CMM-4003(307)	
CONTRACT NO. 61B46				





FILE NAME = 12691_02-XSCT-01 - IDOT P(13)

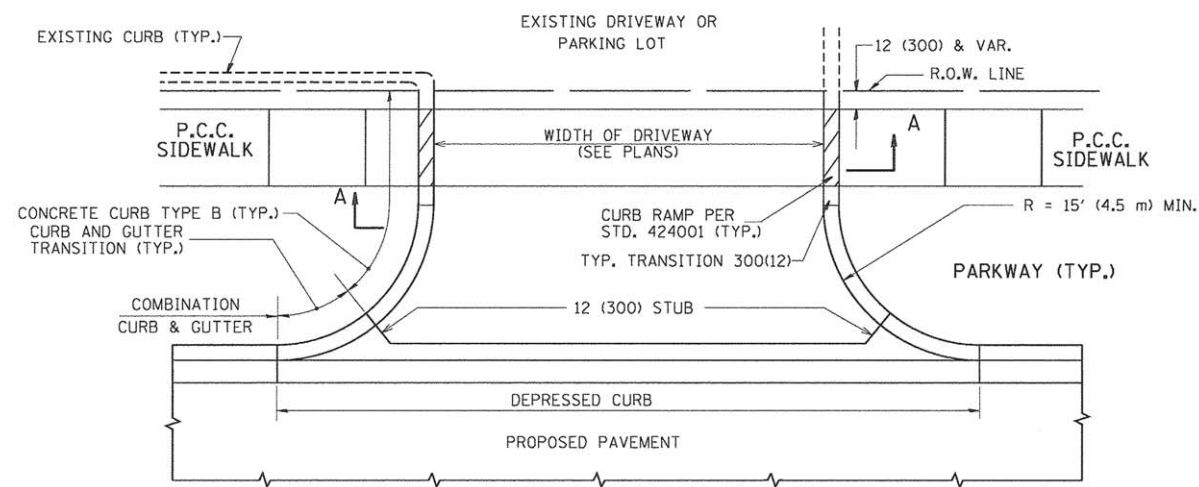
USER NAME =	DESIGNED -- TAG	REVISED --
	CHECKED -- JMN	REVISED --
PLOT SCALE =	DRAWN -- ACAD	REVISED --
PLOT DATE = 03-09-16	CHECKED -- ACAD	REVISED --

**STATE OF ILLINOIS
DEPARTMENT OF TRANSPORTATION**

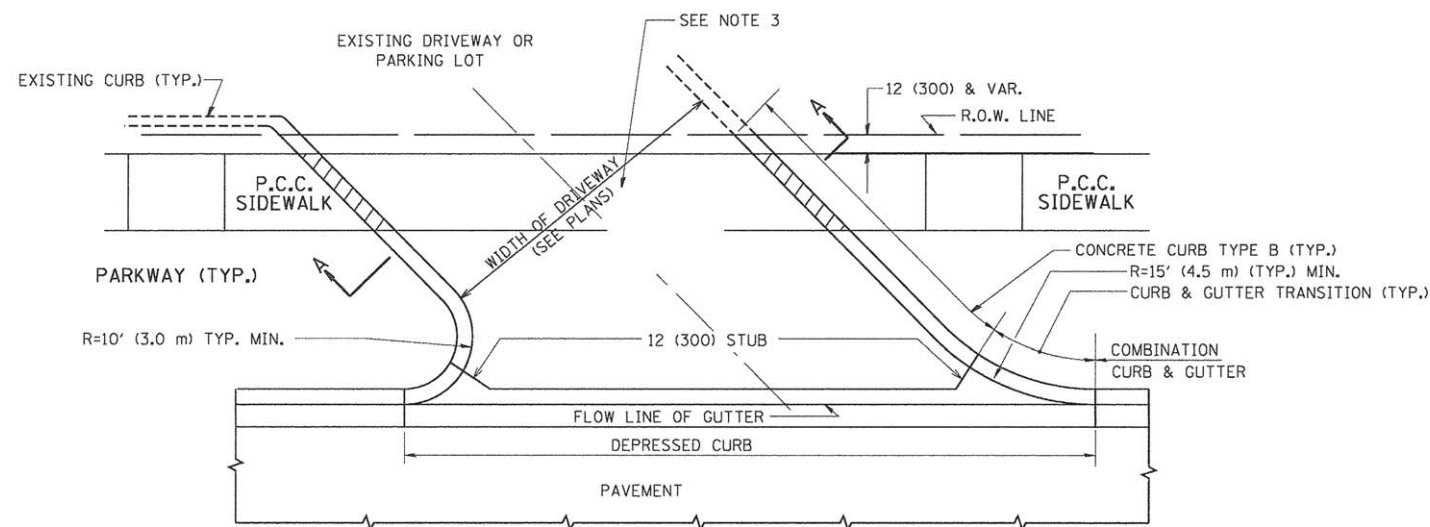
F.A.U. 3751 (PFEIFFER ROAD)
MULTI-USE PATH
CROSS SECTIONS

SCALE: SHEET NO. 22 OF 23 SHEETS STA. TO STA.

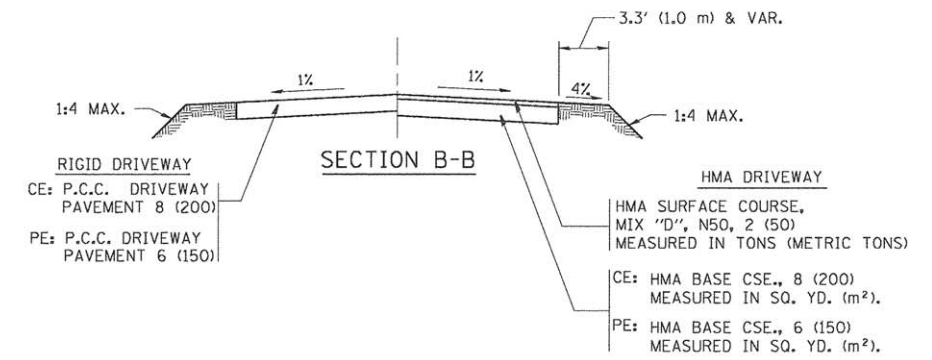
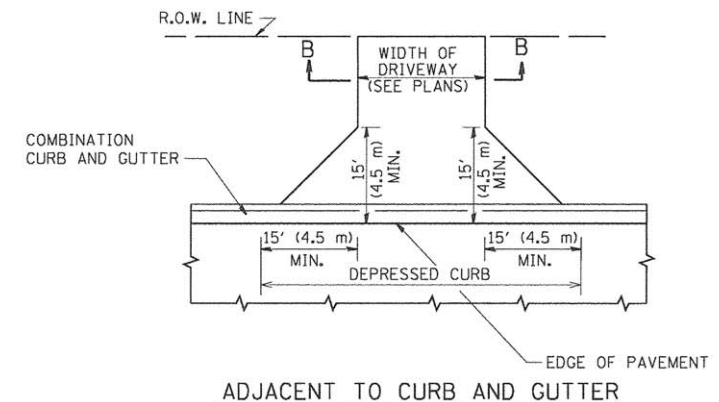
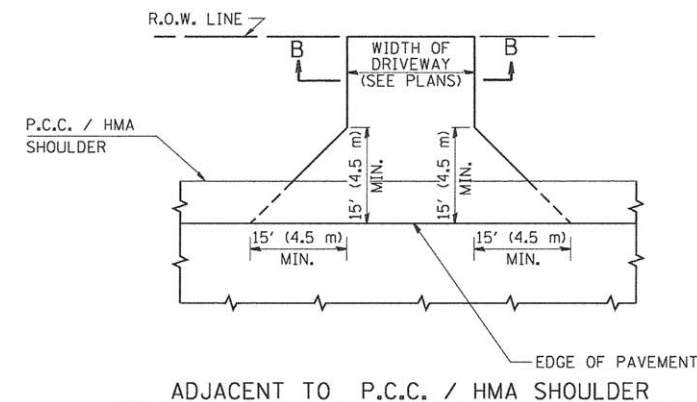
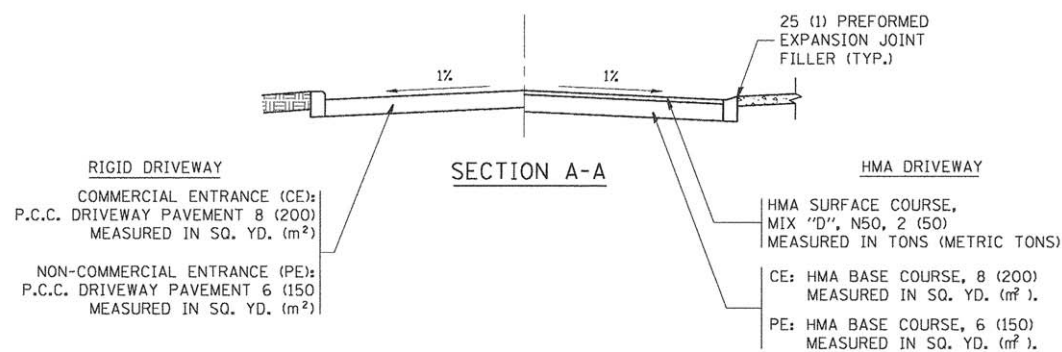
F.A.U. RTE.	SECTION	COUNTY	TOTAL SHEETS	SHEET NO.
3751	13-00050-00-BT	WILL	23	22
FED. ROAD DIST. NO. 1 ILLINOIS FED. AID PROJECT CMM-4003(307)			CONTRACT NO. 61B46	



WITH CONCRETE CURB, TYPE B



WITH CONCRETE CURB, TYPE B



GENERAL NOTES:

DRIVEWAY SLOPES, LOCATIONS, & GEOMETRIC LAYOUT SHALL BE IN ACCORDANCE WITH THE LATEST EDITION OF THE "HANDBOOK FOR POLICY ON PERMITS FOR ACCESS DRIVEWAYS TO STATE HIGHWAYS". FOR FURTHER LAYOUT REQUIREMENTS, REFER TO ILLUSTRATIONS IN THE PERMIT HANDBOOK. DRIVEWAYS SHALL BE REPLACED IN KIND, UNLESS OTHERWISE NOTED ON THE PLANS.

COMMERCIAL DRIVEWAYS SHALL BE CONSTRUCTED WITH CONCRETE CURB, TYPE B RETURNS EXCEPT WHEN THE SIDEWALK EDGE IS 4 FEET (1.2 METERS) OR LESS FROM THE BACK OF CURB, CONSTRUCT A FLARE DRIVEWAY WITHOUT CURB.

THE RESIDENT ENGINEER SHALL CONTACT THE TRAFFIC PERMIT OFFICE AT 847/ 705-4131 FOR ANY QUESTIONS ON DRIVEWAYS SHOWN IN THE PLANS; SPECIFICALLY IN REFERENCE TO ADDITIONAL AND/OR RELOCATION/REMOVAL OF A DRIVEWAY.

COMBINATION CONCRETE CURB & GUTTER SHALL BE MEASURED STRAIGHT ACROSS THE DRIVEWAY. NO ADDITIONAL COMPENSATION WILL BE ALLOWED FOR THE CURB & GUTTER TRANSITION.

1 (25) PREFORMED EXPANSION JOINT FILLER WILL NOT BE PAID SEPARATELY, BUT SHALL BE CONSIDERED INCLUDED IN THE COST OF THE P.C.C. DRIVEWAY PAVEMENT OR P.C.C. SIDEWALK.

WHEN THE P.C.C. SIDEWALK EXTENDS THROUGH THE DRIVEWAY, THE THICKNESS OF THE SIDEWALK IN THE DRIVEWAY AREA SHALL BE THE SAME AS THE DRIVEWAY THICKNESS. SIDEWALK WILL BE PAID FOR AS P.C.C. SIDEWALK OF THE THICKNESS SPECIFIED, SIDEWALK CROSS SLOPE THRU DRIVEWAY AREA TO BE A MAXIMUM OF 1:50.

FILE NAME = 12891_02-DTLS-02 - BD01

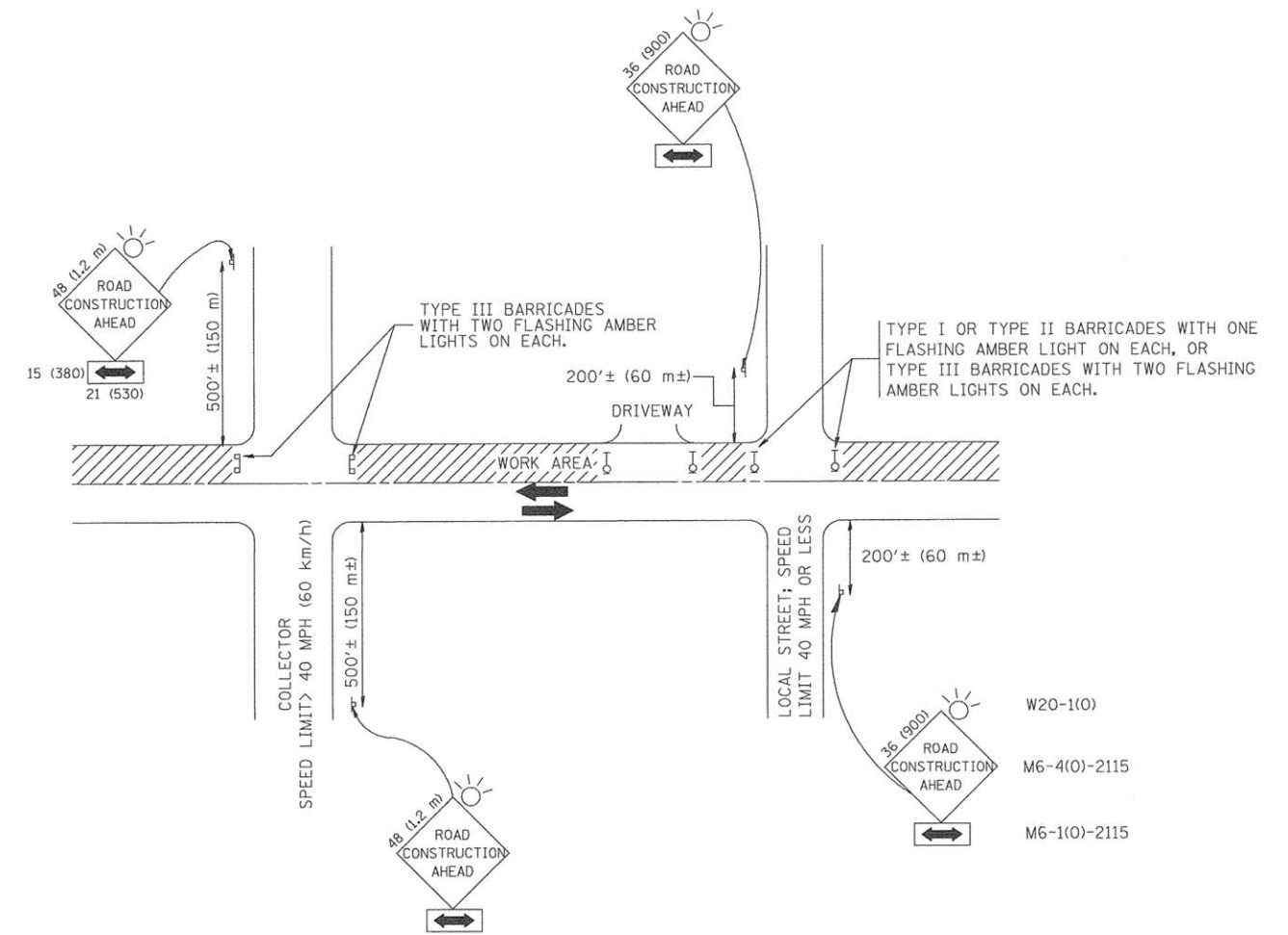
USER NAME = leysa	DESIGNED -- R. SHAH	REVISED -- P. LOFLUER 04-15-03
PLOT SCALE = 50.0000' / 1" =	CHECKED --	REVISED -- R. BORO 01-01-07
PLOT DATE = 9/6/2011	DRAWN --	REVISED -- R. BORO 06-11-08
	CHECKED -- 11-04-95	REVISED -- R. BORO 09-06-11

STATE OF ILLINOIS
DEPARTMENT OF TRANSPORTATION

DRIVEWAY DETAILS - DISTANCE BETWEEN R.O.W.
AND FACE OF CURB & EDGE OF SHOULDER >= 15' (4.5 m)

SCALE: NONE SHEET NO. 23 OF 23 SHEETS STA. TO STA.

F.A.U. RTE.	SECTION	COUNTY	TOTAL SHEETS	SHEET NO.
3751	13-00050-00-BT	WILL	23	23
BD0156-07 (BD-01)		CONTRACT NO. 61B46		
FED. ROAD DIST. NO. 1 ILLINOIS		FED. AID PROJECT CMM-4003(307)		



TRAFFIC CONTROL AND PROTECTION FOR SIDE ROADS, INTERSECTIONS, AND DRIVEWAYS

NOTES:

- A. FOR NO LANE RESTRICTION ON THE SIDE ROAD OR DRIVEWAYS
- SIDE ROAD WITH A SPEED LIMIT OF 40 MPH (60 km/h) OR LESS AS SHOWN ON THE DRAWING AND AS DIRECTED BY THE ENGINEER:
 - ONE **ROAD CONSTRUCTION AHEAD** SIGN 36 x 36 (900x900) WITH A FLASHER AND FLAG MOUNTED ON IT APPROXIMATELY 200' (60 m) IN ADVANCE OF THE MAIN ROUTE.
 - THE CLOSED PORTION OF THE MAIN ROUTE SHALL BE PROTECTED BY BLOCKING WITH TYPE I, TYPE II OR TYPE III BARRICADES, 1/3 OF THE CROSS SECTION OF THE CLOSED PORTION.
 - SIDE ROAD WITH A SPEED LIMIT GREATER THAN 40 MPH (60 km/h) AS SHOWN ON THE DRAWING AND AS DIRECTED BY THE ENGINEER:
 - ONE **ROAD CONSTRUCTION AHEAD** SIGN 48 x 48 (1.2 m x 1.2 m) WITH A FLASHER MOUNTED ON IT APPROXIMATELY 500' (150 m) IN ADVANCE OF THE MAIN ROUTE.
 - THE CLOSED PORTION OF THE MAIN ROUTE SHALL BE PROTECTED BY BLOCKING WITH TYPE III BARRICADES, 1/2 OF THE CROSS SECTION OF THE CLOSED PORTION.
 - WHEN THE SIDE ROAD LIES BETWEEN THE BEGINNING OF THE MAINLINE SIGNING AND THE WORK ZONE, A SINGLE HEADED ARROW (M6-1) SHALL BE USED IN LIEU OF THE DOUBLE HEADED ARROW (M6-4).
- B. FOR A LANE CLOSURE ON A SIDE ROAD OR DRIVEWAY:
- USE APPLICABLE PORTIONS OF THE TYPICAL APPLICATION OF TRAFFIC CONTROL DEVICES (STD. 701501, STD. 701606 OR THE APPROPRIATE STANDARD). THE SPACING OF SIGNS AND BARRICADES SHALL BE ADJUSTED FOR FIELD CONDITIONS AS DIRECTED BY THE ENGINEER. THE DIRECTIONAL ARROW SHALL BE COVERED OR REMOVED WHEN NO LONGER CONSISTENT WITH THE SIDE ROAD LANE CLOSURE.
- C. ADVANCE WARNING SIGNS ARE TO BE OMITTED ON DRIVEWAY UNLESS OTHERWISE NOTED.
- D. THE TRAFFIC CONTROL AND PROTECTION FOR SIDE ROADS, INTERSECTIONS, AND DRIVEWAYS SHALL BE INCIDENTAL TO THE COST OF SPECIFIED TRAFFIC CONTROL STANDARDS OR ITEMS.

All dimensions are in millimeters (Inches) unless otherwise shown.

FILE NAME = 12691_02-DTLS-02 - TC10	USER NAME = gaglianobt	DESIGNED -- LHA	REVISED -- J. OBERLE 10-18-95
		CHECKED --	REVISED -- A. HOUSEH 03-06-96
	PLOT SCALE = 50,000' / IN.	DRAWN --	REVISED -- A. HOUSEH 10-15-96
	PLOT DATE = 1/4/2008	CHECKED -- 06-89	REVISED -- RAMMACHER 01-06-00

STATE OF ILLINOIS
DEPARTMENT OF TRANSPORTATION

TRAFFIC CONTROL AND PROTECTION FOR
SIDE ROADS, INTERSECTIONS, AND DRIVEWAYS

SCALE: NONE SHEET NO. 23A OF 23 SHEETS STA. TO STA.

F.A.U. RTE.	SECTION	COUNTY	TOTAL SHEETS	SHEET NO.
3751	13-00050-00-BT	WILL	23	23A
TC-10		CONTRACT NO. 61B46		
FED. ROAD DIST. NO. 1		ILLINOIS FED. AID PROJECT CMM-4003(307)		