

STATE OF ILLINOIS
DEPARTMENT OF TRANSPORTATION
DIVISION OF HIGHWAYS

F.A. RTE.	SECTION	COUNTY	TOTAL SHEETS	SHEET NO.
		ST. CLAIR	14	1
ILLINOIS CONTRACT NO. 46405				

C-30-004-16 D-8

PROPOSED HIGHWAY PLANS

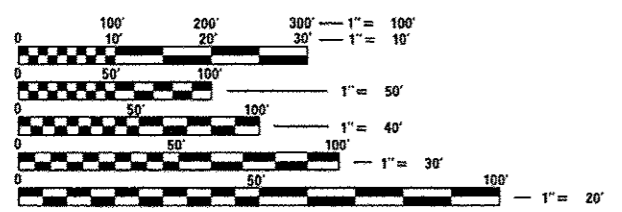
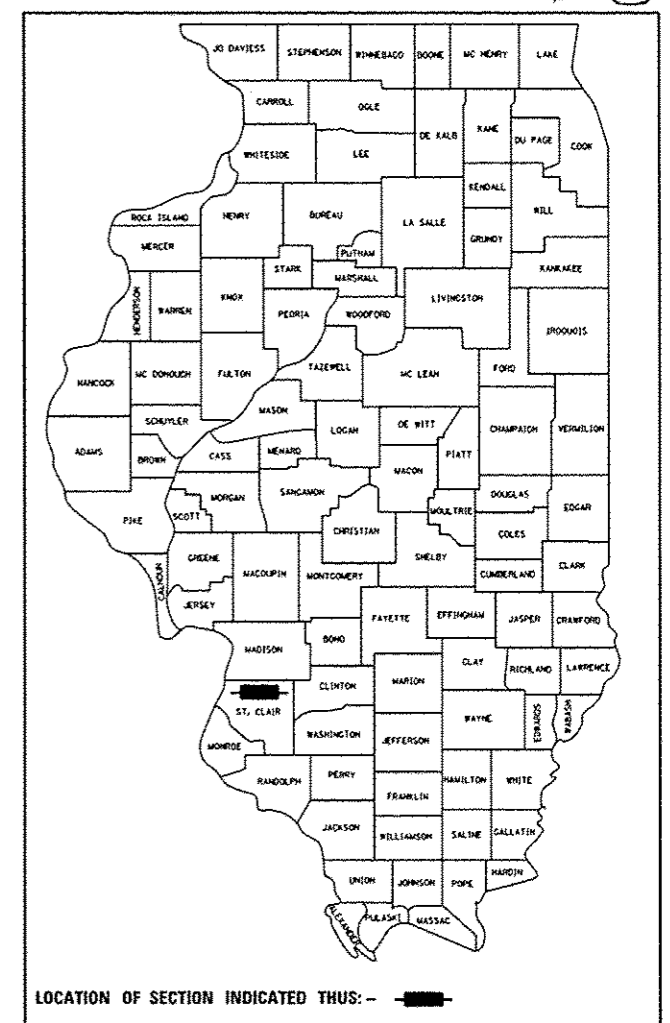
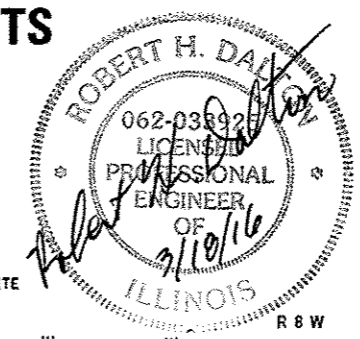
IDOT /IHPA STATEWIDE CAHOKIA MOUNDS STATE HISTORIC SITE SECTION PARK ROADS 2016-04 PARKING AND SIDEWALK IMPROVEMENTS ST. CLAIR COUNTY

INDEX OF SHEETS

SHEET NO.	SHEET TITLE
1	COVER SHEET
2	INDEX OF SHEETS, GENERAL NOTES, LIST OF STANDARDS, AND DETAILS
3-4	SUMMARY OF QUANTITIES
5	SCHEDULE OF QUANTITIES
6	TYPICAL SECTIONS
7	MONKS MOUND
8	COLLINS RD
9-10	PALISADE PATH AND NATIVE PLANT PLOT
11	SOUTH PARKING LOT
12	LITTLE TWIN MOUNDS PATH
13	HANDICAP PARKING SPACE, RAMP, AND MINOR SIGN DETAILS
14	ENTRANCE SIGN DETAILS

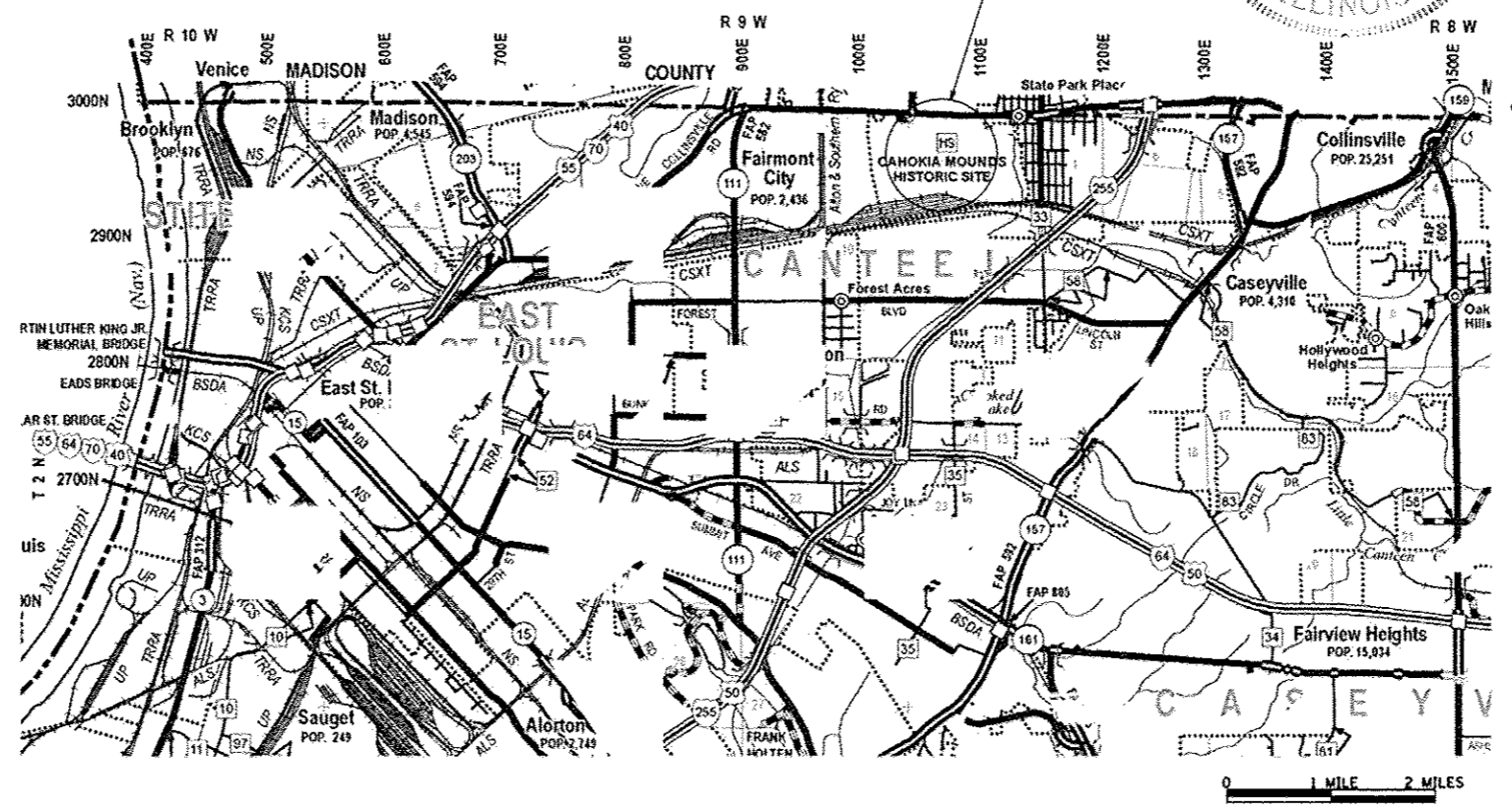
LIST OF STANDARDS

STD. NO.	DESCRIPTION
000001-06	STANDARD SYMBOLS, ABBREVIATIONS AND PATTERNS
001001-02	AREAS OF REINFORCEMENT BARS
001006	DECIMAL OF AN INCH AND OF A FOOT
424001-08	PERPENDICULAR CURB RAMP FOR SIDEWALKS
606001-06	CONCRETE CURB TYPE B AND COMBINATION CONCRETE CURB AND GUTTER
701901-05	TRAFFIC CONTROL DEVICES
720001-01	SIGN PANEL MOUNTING DETAILS
720006-04	SIGN PANEL ERECTION DETAILS
720011-01	METAL POSTS FOR SIGNS, MARKERS AND DELINEATORS
729001-01	APPLICATIONS OF TYPES A & B METAL POSTS (FOR SIGNS & MARKERS)
780001-05	TYPICAL PAVEMENT MARKINGS
STANDARD B.L.R. 21-9	TYPICAL APPLICATION OF TRAFFIC CONTROL DEVICES FOR CONSTRUCTION ON RURAL LOCAL HIGHWAYS



FULL SIZE PLANS HAVE BEEN PREPARED USING STANDARD ENGINEERING SCALES. REDUCED SIZED PLANS WILL NOT CONFORM TO STANDARD SCALES. IN MAKING MEASUREMENTS ON REDUCED PLANS, THE ABOVE SCALES MAY BE USED.

J.U.L.I.E.
JOINT UTILITY LOCATION INFORMATION FOR EXCAVATION
1-800-892-0123
OR 811



STATE OF ILLINOIS
DEPARTMENT OF TRANSPORTATION
DIVISION OF HIGHWAYS

SUBMITTED *March 25 2016*
[Signature]
DEPUTY DIRECTOR OF HIGHWAYS, REGION ENGINEER

May 6 2016
[Signature]
ENGINEER OF DESIGN AND ENVIRONMENT

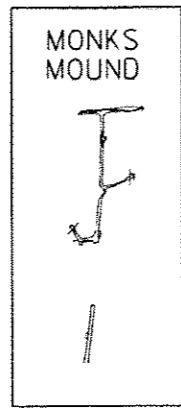
May 6 2016
[Signature]
DIRECTOR OF HIGHWAYS, CHIEF ENGINEER

PROJECT ENGINEER: VINCE MADONIA (217) 782-4074

PRINTED BY THE AUTHORITY
OF THE STATE OF ILLINOIS

PLAN SHEET ARRANGEMENT

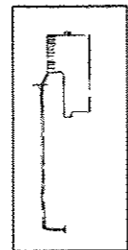
SHEET 7



MONKS
MOUND

COLLINS RD

SHEET 8



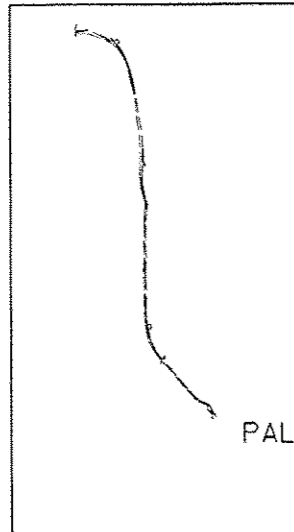
COLLINSVILLE RD

X0324062 ENTRANCE SIGN
1 LUMP SUM
X7240300 SIGN REMOVAL
1 EACH
(SEE DETAIL SHEET)

X7240300 SIGN REMOVAL
1 EACH
(SEE DETAIL SHEET)

SHEET 10

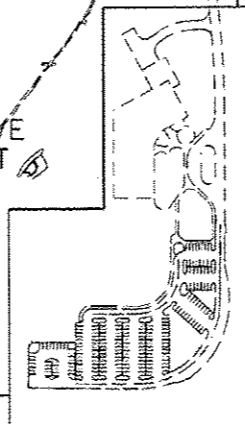
SHEET 9



PALISADE PATH

NATIVE
PLOT

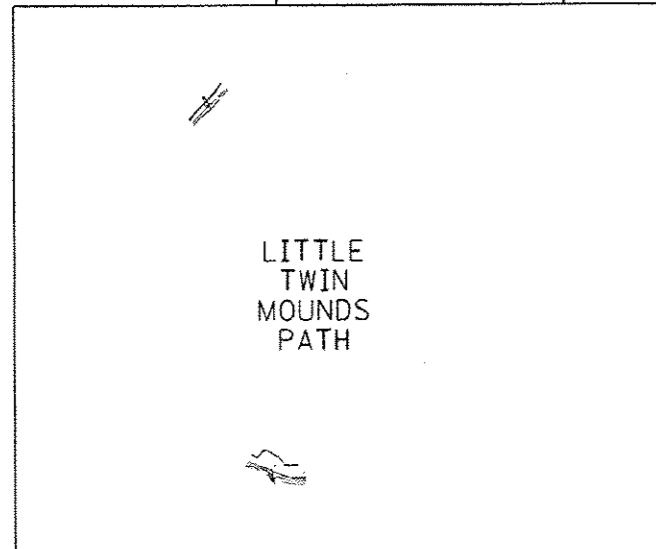
SHEET 11



SOUTH
PARKING
LOT

LITTLE
TWIN
MOUNDS
PATH

SHEET 12



LEGEND

- PROPOSED STORM SEWER
- - - EXISTING STORM SEWER
- - - EXISTING DITCH
- PROPOSED INLET
- ⊕ EXISTING SIGN
- ⊕ EXISTING LIGHT POLE
- ⊕ EXISTING WATER VALVE
- ⊕ EXISTING DECIDUOUS TREE
- ⊕ EXISTING POWER POLE
- ⊕ EXISTING FIRE HYDRANT
- ⊕ EXISTING CATCH BASIN
- ⊕ EXISTING INLET
- ⊕ EXISTING MANHOLE
- ⊕ EXISTING FLARED END SECTION
- ⊕ EXISTING BOLLARD
- ⊕ EXISTING JUNCTION BOX

GENERAL NOTES

- 1) SPECIFICATIONS SHALL BE THE "STANDARD SPECIFICATIONS FOR ROAD AND BRIDGE CONSTRUCTION" ADOPTED APRIL 1, 2016.
- 2) ALL ELEVATIONS ARE REFERENCED TO ELEVATIONS ESTABLISHED BY VASCONCELLES ENGINEERING CORP.
- 3) WHERE SECTION OR SUBSECTION MONUMENTS ARE ENCOUNTERED, THE ENGINEER SHALL BE NOTIFIED BEFORE SUCH MONUMENTS ARE REMOVED. THE CONTRACTOR SHALL PROTECT AND CAREFULLY PRESERVE ALL PROPERTY MARKERS AND MONUMENTS UNTIL THE OWNER AND AUTHORIZED SURVEYOR OR AGENT HAS WITNESSED OR OTHERWISE REFERENCED THEIR LOCATION. IF THE ENGINEER DECIDES TO HAVE THE CONTRACTOR RESET THE MONUMENT, THIS WORK WILL BE PAID FOR IN ACCORDANCE WITH ARTICLE 109.04 OF THE STANDARD SPECIFICATIONS FOR HIGHWAY AND BRIDGE CONSTRUCTION.
- 4) THE CONTRACTOR SHALL CONTACT J.U.L.I.E. TO HAVE PUBLIC AND PRIVATE UTILITIES LOCATED PRIOR TO ANY CONSTRUCTION.
- 5) THE CONTRACTOR SHALL BE RESPONSIBLE FOR PROTECTING UTILITY PROPERTY FROM CONSTRUCTION OPERATIONS AS OUTLINED IN ARTICLE 107.26 OF THE STANDARD SPECIFICATIONS. THE J.U.L.I.E. NUMBER IS (800) 892-0123. A MINIMUM OF 48 HOURS ADVANCE NOTICE IS REQUIRED.
- 6) ANY REFERENCE TO THE STANDARDS THROUGH THE PLANS SHALL BE INTERPRETED TO BE THE LATEST STANDARDS OF THE DEPARTMENT AS INCLUDED IN THESE PLANS.
- 7) THE CONTRACTOR SHALL ASSUME COMPLETE RESPONSIBILITY FOR JOB SITE CONDITIONS DURING THE COURSE OF CONSTRUCTION, INCLUDING SAFETY OF ALL PERSONS AND PROPERTY, THAT THIS REQUIREMENT SHALL APPLY CONTINUOUSLY AND NOT BE LIMITED TO NORMAL WORKING HOURS, AND THAT THE CONTRACTOR SHALL DEFEND, IDENTIFY, AND HOLD THE OWNER AND THE ENGINEER HARMLESS FROM ANY AND ALL LIABILITY, REAL OR ALLEGED, IN CONNECTION WITH THE PERFORMANCE OF WORK ON THIS PROJECT, EXCEPTING FOR THE LIABILITY ARISING FROM THE SOLE NEGLIGENCE OF THE OWNER OR THE ENGINEER.
- 8) ALL CONSTRUCTION LAYOUT SHALL BE THE RESPONSIBILITY OF THE CONTRACTOR.
- 9) THE CONTRACTOR SHALL SEED ALL DISTURBED AREAS WITHIN THE PROJECT LIMITS. SEEDING SHALL BE CLASS I. CONFIRM WITH SITE REPRESENTATIVES THAT THESE MATERIALS ARE ACCEPTABLE FOR THE SITE. THIS WORK WILL BE INCLUDED IN THE CONTRACT UNIT PRICE PER 50 YD FOR "TOPSOIL, FURNISH AND PLACE, VARIABLE DEPTH".
- 10) FERTILIZER SHALL BE APPLIED TO ALL DISTURBED AREAS AND INCORPORATED INTO THE SEEDBED PRIOR TO SEEDING OR PLACEMENT OF SOD AT THE RATE SPECIFIED IN SECTIONS 250 AND 252 OF THE STANDARD SPECIFICATIONS. THIS WORK SHALL BE INCLUDED IN THE COST OF "TOPSOIL, FURNISH AND PLACE, VARIABLE DEPTH".
- 11) MULCH METHOD II SHALL BE APPLIED OVER ALL SEEDED AREAS. THIS SHALL BE INCLUDED IN THE COST OF "TOPSOIL, FURNISH AND PLACE, VARIABLE DEPTH".

FILE NAME *	USER NAME = brsonm	DESIGNED -	REVISED -	STATE OF ILLINOIS DEPARTMENT OF TRANSPORTATION	INDEX OF SHEETS CAHOKIA MOUNDS STATE HISTORIC SITE	F.A. RTE.	SECTION	COUNTY	TOTAL SHEETS	SHEET NO.	
S:\CAD Drawings\CAD Drawings\CAD Drawings\250\250-861-06 Cahokia Mounds\sh12.dwg		DRAWN	REVISED -					ST. CLAIR	14	2	
PLOT SCALE = 48,0000 1/ in.		CHECKED -	REVISED -			CONTRACT NO. 46405					
PLOT DATE = 3/17/2016		DATE -	REVISED -			ILLINOIS FED. AID PROJECT					
					SCALE:		SHEET OF SHEETS		STA. TO STA.		

URBAN
CONSTR. CODE
100% STATE

CODE NO.	ITEM	UNIT	TOTAL QUANTITY	ROADWAY S.N.
21101600	TOPSOIL FURNISH AND PLACE, VARIABLE DEPTH	SQ YD	1,344	1,344
35101800	AGGREGATE BASE COURSE, TYPE B 6"	SQ YD	19	19
40200800	AGGREGATE SURFACE COURSE, TYPE B	TON	737	737
42400200	PORTLAND CEMENT CONCRETE SIDEWALK 5 INCH	SQ FT	64	64
42400800	DETECTABLE WARNINGS	SQ FT	19	19
44000300	CURB REMOVAL	FOOT	115	115
44000600	SIDEWALK REMOVAL	SQ FT	64	64
45100200	CRACK FILLING	POUND	2,700	2,700
50105220	PIPE CULVERT REMOVAL	FOOT	8	8
542C0213	PIPE CULVERTS, CLASS C, TYPE 1 8"	FOOT	13	13
60600605	CONCRETE CURB, TYPE B	FOOT	128	128
67100100	MOBILIZATION	LSUM	1	1
* 72000100	SIGN PANEL - TYPE 1	SQ FT	17	17
* 72900100	METAL POSTS, TYPE A	FOOT	132	132
* 78001100	PAINT PAVEMENT MARKING - LETTERS AND SYMBOLS	SQ FT	84	84

*Specialty Items

FILE NAME *	USER NAME = brianm	DESIGNED -	REVISED -	STATE OF ILLINOIS DEPARTMENT OF TRANSPORTATION	SUMMARY OF QUANTITIES CAHOKIA MOUNDS STATE HISTORIC SITE	F.A. RTE.	SECTION	COUNTY	TOTAL SHEETS	SHEET NO.
S:\CAD Drawings\CAD Drawings\CAD Drawings\250\250-861-AE Cahokia Mounds\shh.03.04	DRAWN:ttt:edgn	CHECKED -	REVISED -			ST. CLAIR	14	3		
Default	PLOT SCALE = 40.0000 1/ in.	DATE -	REVISED -			CONTRACT NO. 46405				
	PLOT DATE = 4/4/2016					ILLINOIS FED. AID PROJECT				

SCALE: SHEET OF SHEETS STA. TO STA.

URBAN

CONSTR. CODE

100% STATE

ROADWAY

0005

S.N.

CODE NO.	ITEM	UNIT	TOTAL QUANTITY	ROADWAY S.N.
* 78001110	PAINT PAVEMENT MARKING - LINE 4"	FOOT	4,765	4,765
* 78001130	PAINT PAVEMENT MARKING - LINE 6"	FOOT	1,061	1,061
K0012950	HERBICIDE SPRAYING	ACRE	0.6	0.6
X0300019	REMOVE AND REINSTALL PARKING BLOCKS	EACH	52	52
X0321158	PARK BENCHES	EACH	-2-	-2-
X0322878	TIMBER CURB	FOOT	157	157
X0324062	ENTRANCE SIGN	L SUM	1	1
X0327008	REMOVE AND RELOCATE SIGN (SPECIAL)	EACH	4	4
X0327172	REMOVE AND REPLACE SIGN AND SUPPORTS	EACH	1	1
X0327308	PARKING LOT SEAL COAT	GALLON	3,300	3,300
X2020410	EARTH EXCAVATION (SPECIAL)	CU YD	72	72
X7240300	SIGN REMOVAL	EACH	2	2
X2100010	MINOR SIGN COMPLETE	EACH	-2-	-2-
Z0013798	CONSTRUCTION LAYOUT	L SUM	1	1

**Specialty Items*

SIGN SCHEDULE									
LOCATION	STA.	STA.	AGGR BSE CSE, TY B, 6" (SQ YD)	SIGN PANEL TYPE I (SQ FT)	METAL POST, TY A (FOOT)	REM AND RELOCATE SIGN (SPCL) (EACH)	REM & REPL SIGN AND SUPPORTS (EACH)	ENTRANCE SIGN (LUMP SUM)	SIGN REMOVAL (EACH)
Little Twin Mounds Path	600+21.77	20.5' LT	to	600+41.60	21.7' LT	10.3			
	701+01.52	5.39' LT	to	701+16.47	6.55' LT	8.3			
Monks Mound Path	403+05.32	32.38' LT	to	403+08.36	32.72' LT		1		
	403+42.82	58.42' LT	to	403+34.24	52.94' LT		1		
	404+82.18	92.60' RT	to	404+79.47	82.17' RT		1		
	404+80.90	89.31' RT	to	404+76.93	79.47' RT		1		
	406+37.84	1.27' RT							
Entire Site	Ten signs, same as previous sign 406+37.84, placed at direction of site personnel			15	12				
Native Plant Plot	310+31.79	103.81' RT	to	310+41.92	104.26' RT		1		
Collinsville Rd.	west/east							1	2
TOTALS =				19	17	132	4	1	1

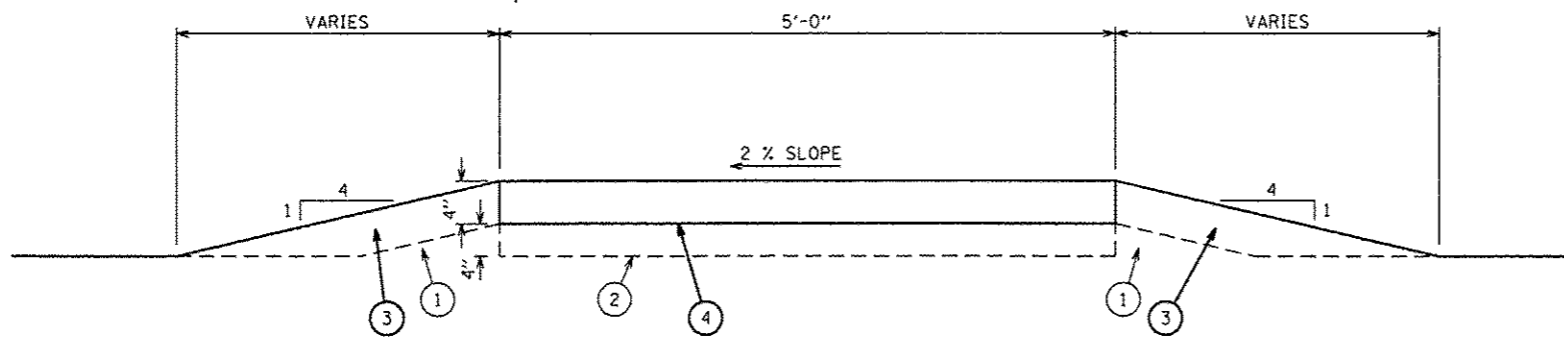
PAVING SCHEDULE				
LOCATION	STA.	STA.	CRACK FILLING (POUND)	PARKING LOT SEAL COAT (GALLON)
South Park Lot	100+00.00	to	101+20.28	423.5
	101+20.28	to	101+81.73	334.2
	101+81.73	to	102+59.59	348.4
	102+59.59	to	103+01.61	348.3
	103+01.61	to	104+88.14	494.8
	104+88.14	to	106+14.93	367.4
	106+14.93	to	107+05.42	255.2
	107+05.42	to	107+91.68	215.6
Collins Ln Parking Lot	500+00.00	to	502+09.34	512.3
TOTALS =			2,700	3,300

PAVEMENT MARKING SCHEDULE						
LOCATION	STA.	STA.	PAINT PVT MKG - LTR & SYM (SQ FT)	PAINT PVT MKG - LINE 4" (FOOT)	PAINT PVT MKG - LINE 6" (FOOT)	REM AND REINSTALL PKG BLOCKS (EACH)
South Park Lot	100+00.00	to	101+20.35	1,236		18
	101+20.35	to	104+88.14	31	2,618	
	104+88.14	to	106+13.40	31	468	135
	106+13.40	to	106+75.00	19	128	
	106+75.00	to	107+91.68	171	721	
Collins Ln Parking Lot	504+39.95	to	505+04.87	3	144	34
TOTALS =			84	4,765	1,061	52

AGGREGATE PATH SCHEDULE							
LOCATION	STA.	STA.	TOPSOIL FURN & PLACE, VAR DEPTH (SQ YD)	AGGR SURF, TY B (TON)	TIMBER CURB (FOOT)	HERBICIDE SPRAYING (ACRE)	
Palisade Path	200+35.67	22.37' RT	to	210+39.23	11.96' RT	0.115	
	300+01.43	8.35' LT	to	304+88.27	9.84' LT	0.056	
	305+01.46	10.21' LT	to	312+70.28	7.43' LT	0.088	
	312+76.71	10.21' LT	to	325+00.36	8.81' RT	0.155	
Native Plant Plot	310+06.84	103.87' RT	to	310+74.92	112.15' RT		
Monks Mound	400+00.00	11.50' RT	to	401+46.70	11.0' RT	0.034	
	403+08.01	5.39' RT	to	406+24.66	8.93' RT	0.074	
	403+17.34	0.94' RT	to	403+47.24	57.16' LT		
	404+48.23	16.05' RT	to	404+81.30	93.27' RT		
	406+29.05	37.34' LT	to	406+30.75	95.85' RT		
Collins Ln Pkg Lot	500+34.38	7.12' LT	to	504+36.17	48.75' LT	0.052	
Little Twin Mounds Path	700+63.89	19.42' LT	to	700+67.59	47.23' LT	0.001	
TOTALS =			1,344	737	157	0.6	

DRAINAGE SCHEDULE					
LOCATION	STA.	STA.	PIPE CULV REM (FOOT)	PIPE CULV, CL C, TY 1, 8" (FOOT)	EARTH EXC (SPCL) (CU YD)
Little Twin Mounds Path	700+58.52	31.5' LT	to	700+71.13	31.3' LT
South Parking Lot	100+00.00	8.0' RT	to	100+20.00	8.0' LT
Entrance Signs	east				
	west				
TOTALS =			8	13	72

HANDICAP RAMP SCHEDULE							
LOCATION	STA.	STA.	PCC SIDEWALK, 5" (SQ FT)	DETECTABLE WARNINGS (SQ FT)	CURB REMOVAL (FOOT)	SIDEWALK REMOVAL (SQ FT)	CONCRETE CURB, TYPE B (FOOT)
South Park Lot	assumed						
	107+45.75	93.7' RT	to	107+57.63	93.7' RT	64	19
TOTALS =			64	19	115	64	128

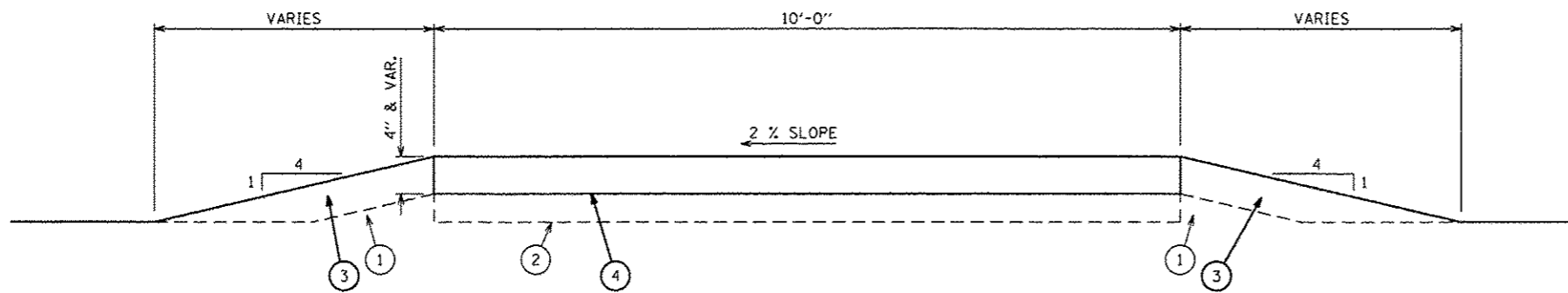


PALISADE PATH AND COLLINS LANE SECTION

STA. 200+35.67 TO STA. 210+39.23
 STA. 300+00.00 TO STA. 304+88.27
 STA. 305+01.46 TO STA. 312+70.28
 STA. 312+76.71 TO STA. 325+00.36
 STA. 500+34.48 TO STA. 504+36.17

LEGEND

- ① EXISTING TOPSOIL
- ② EXISTING AGGREGATE SURFACE COURSE, TYPE B
- ③ 21101600 TOPSOIL FURNISH AND PLACE, VAR. DEPTH
- ④ 40200800 AGGREGATE SURFACE COURSE, TY B, 4"



PATH BETWEEN STAIRS ON MONKS MOUND

STA. 400+00.00 TO STA. 401+46.70
 STA. 403+08.01 TO STA. 406+24.66

FILE NAME *	USER NAME = brianm	DESIGNED -	REVISED -
S:\CAD Drawings\CAD Drawings\CAD Drawings\250\250-061-AE Cahokia Mounds\sh.t.06 Typ		DRAWN.dgn -	REVISED -
Default	PLOT SCALE = 48.0000' / in.	CHECKED -	REVISED -
	PLOT DATE = 3/16/2016	DATE -	REVISED -

**STATE OF ILLINOIS
 DEPARTMENT OF TRANSPORTATION**

**TYPICAL SECTIONS
 CAHOKIA MOUNDS STATE HISTORIC SITE**

SCALE: NTS SHEET OF SHEETS STA. TO STA.

F.A. RTE.	SECTION	COUNTY	TOTAL SHEETS	SHEET NO.
		ST. CLAIR	14	6
			CONTRACT NO. 46405	
ILLINOIS FED. AID PROJECT				

NOTE: BEFORE PLACEMENT OF THE SURFACE AGGREGATE, THE EXISTING VEGETATION ON THE PATH WILL BE REMOVED AND HERBICIDE SPRAYING SHALL BE DONE.

PROP CURVE 4
 P.I. STA. = 203+26.61
 $\Delta = 7^{\circ} 28' 24''$
 $D = 1^{\circ} 08' 45''$
 $R = 5,000.92'$
 $T = 326.61'$
 $L = 652.29'$
 $E = 10.65'$
 $N = 7,722.04$
 $E = -1,052.39$

X0327008 REMOVE AND RELOCATE SIGN (SPECIAL) (RELOCATE MINOR SIGN COMPLETE 10' SOUTHEAST)
 STA. 403+42.82 58.42' LT TO STA. 403+34.24 52.94' LT
 1 EACH

X0327008 REMOVE AND RELOCATE SIGN (SPECIAL) (RELOCATE MINOR SIGN COMPLETE) 3' NORTH
 STA. 403+05.32 32.38' LT TO STA. 403+08.36 32.72' LT
 1 EACH

CONTRACTOR'S PATH TO THE TOP OF THE CREST

72000100 SIGN PANEL, TY I
 STA. 406+37.84 1.27' RT
 1.5 SQ FT
 72900100 METAL POST, TY A
 STA. 406+37.84, 1.27' RT
 12 FOOT
 P.T. STA. 406+52.59
 $N = 7,680.29$
 $E = 3,948.35$

21101600 TOPSOIL, FURNISH AND PLACE, VAR DEPTH
 STA. 406+29.05 37.34' LT TO STA. 406+30.75, 95.85' RT
 193 SQ YD

X0322878 TIMBER CURB (W/ 12" X 12" TIMBERS)
 STA. 406+29.05 37.34' LT TO STA. 406+30.75 95.85' RT
 157 FOOT

40200800 AGGR SURF, TY B, 4"
 STA. 406+09.05 37.34' LT TO STA. 406+30.75 95.85' RT
 33.4 TON

21101600 TOPSOIL, FURNISH AND PLACE, VAR DEPTH
 STA. 403+08.01 5.39' RT TO STA. 406+24.66 8.93' RT
 189 SQ YD

40200800 AGGR SURF, TY B, 4"
 STA. 403+08.01 5.39' RT TO STA. 406+24.66 8.93' RT
 79 TON

X0327008 REMOVE AND RELOCATE SIGN (SPECIAL) (RELOCATE BOTH SIGNS 10' WEST)
 STA. 404+82.18 92.60' RT TO STA. 404+79.47 82.17' RT
 STA. 404+81.30 93.27' RT TO STA. 404+80.90 89.31' RT
 STA. 404+76.93 79.47' RT
 2 EACH

40200800 AGGR SURF, TY B, 4"
 STA. 404+48.23 16.05' RT TO STA. 404+81.30 93.27' RT
 32 TON

21101600 TOPSOIL, FURNISH AND PLACE, VAR DEPTH
 STA. 404+48.23 16.05' RT TO STA. 404+81.30 93.27' RT
 50 SQ YD

EXIST. CONC PAD, MINOR SIGN COMPLETE, AND PARK BENCH

40200800 AGGR SURF, TY B, 4"
 STA. 403+17.34 0.94' RT TO STA. 403+47.24 57.16' RT
 10 TON

21101600 TOPSOIL, FURNISH AND PLACE, VAR DEPTH
 STA. 403+17.34 0.94' RT TO STA. 403+47.24 57.16' RT
 47 SQ YD

EXIST. STEPS

40200800 AGGR SURF, TY B, 4"
 STA. 400+00.00 11.50' RT TO STA. 401+46.70 11.00' RT
 37 TON

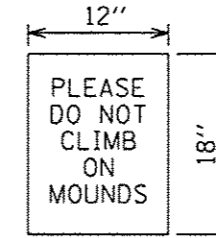
21101600 TOPSOIL, FURNISH AND PLACE, VAR DEPTH
 STA. 400+00.00 11.50' RT TO STA. 401+46.70 11.00' RT
 87 SQ YD

EXIST. CONC PAD, MINOR SIGN COMPLETE, AND PARK BENCH

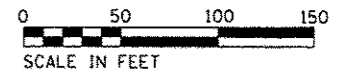
P.T. STA. 400+00.00
 $N = 7,030.22$
 $E = 3,900.44$

EXIST. STEPS

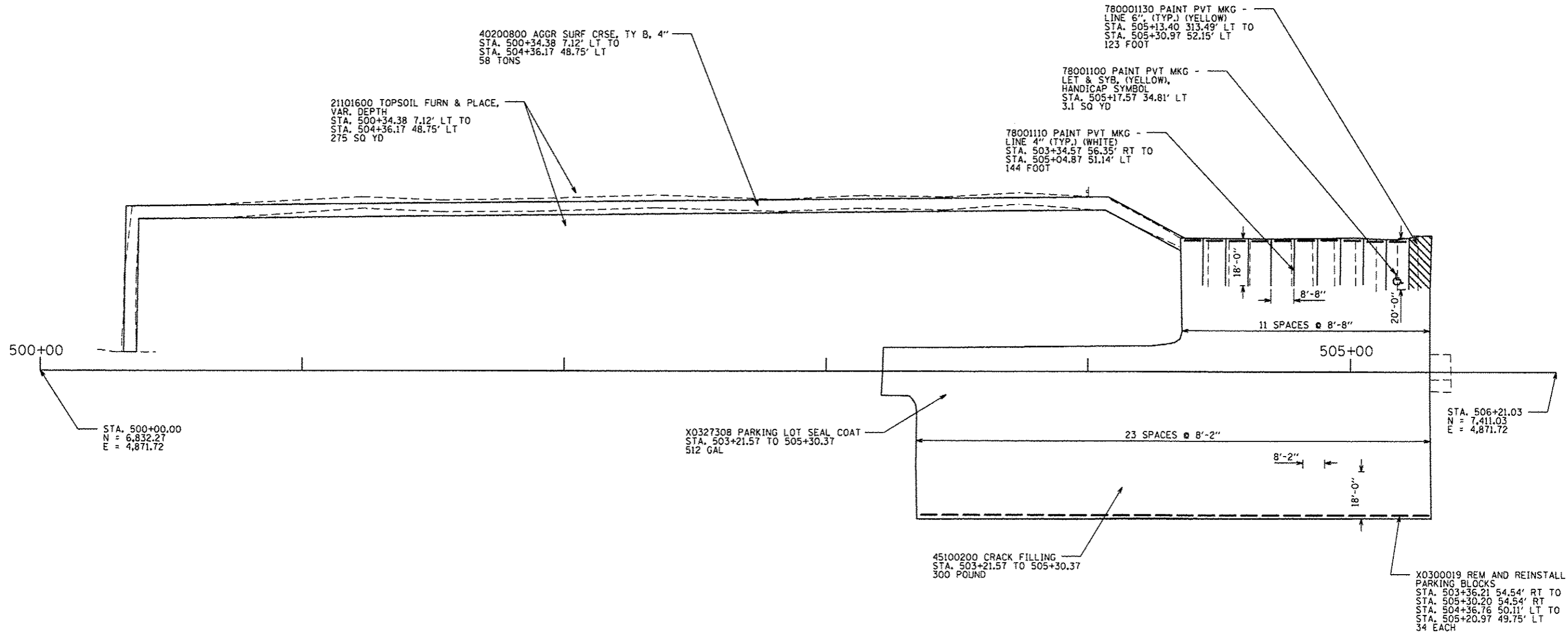
EXIST. CONC PAD, AND MINOR SIGN COMPLETE



SIGN PANEL, TYPE I

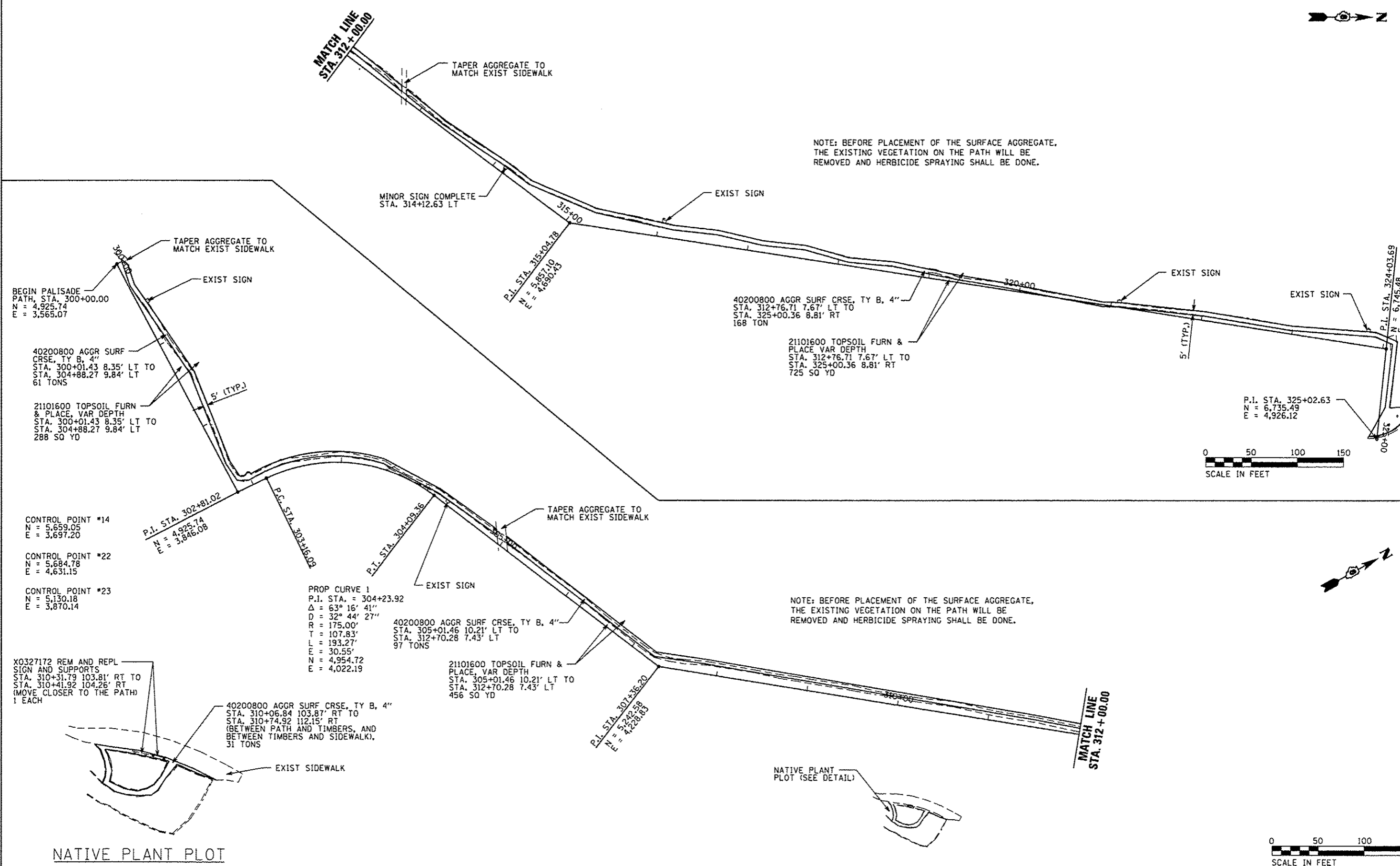


FILE NAME =	USER NAME = brianm	DESIGNED -	REVISED -	STATE OF ILLINOIS DEPARTMENT OF TRANSPORTATION	MONKS MOUND PATH CAHOKIA MOUNDS STATE HISTORIC SITE	F.A. RTE.	SECTION	COUNTY	TOTAL SHEETS	SHEET NO.
S:\CAD Drawings\CAD Drawings\250\250-061-AE Cahokia Mounds\ht.07 Monks Mound Path\ht.dgn		CHECKED -	REVISED -					ST. CLAIR	14	7
Default	PLOT SCALE = 100.0000' / in.	DATE -	REVISED -			SCALE: 1" = 50'	SHEET OF SHEETS	ILLINOIS FED. AID PROJECT		
	PLOT DATE = 3/18/2016					STA. 400+00.00 TO STA. 406+52.59		CONTRACT NO. 46405		



COLLINS LANE PARKING LOT

FILE NAME =	USER NAME = brianm	DESIGNED -	REVISED -	STATE OF ILLINOIS DEPARTMENT OF TRANSPORTATION	COLLINS LANE PARKING LOT CAHOKIA MOUNDS STATE HISTORIC SITE		F.A. RTE.	SECTION	COUNTY	TOTAL SHEETS	SHEET NO.
S:\CAD Drawings\CAD Drawings\CAD Drawings\250\250-051-AE Cahokia Mounds\sh1.00 Col	DRAWING Loc.sh1.dgn	REVISED -	REVISED -				ST. CLAIR	14	8		
Default	PLOT SCALE = 48,0000' / in.	CHECKED -	REVISED -				CONTRACT NO. 46405				
	PLOT DATE = 3/16/2016	DATE -	REVISED -				ILLINOIS FED. AID PROJECT				
				SCALE: 1" = 50'		SHEET OF SHEETS	STA. 500+00.00 TO STA. 506+21.03				



BEGIN PALISADE PATH, STA. 300+00.00
 N = 4,925.74
 E = 3,565.07

40200800 AGGR SURF CRSE, TY B, 4"
 STA. 300+01.43 8.35' LT TO
 STA. 304+88.27 9.84' LT
 61 TONS

21101600 TOPSOIL FURN & PLACE, VAR DEPTH
 STA. 300+01.43 8.35' LT TO
 STA. 304+88.27 9.84' LT
 288 SQ YD

CONTROL POINT #14
 N = 5,659.05
 E = 3,697.20

CONTROL POINT #22
 N = 5,684.78
 E = 4,631.15

CONTROL POINT #23
 N = 5,130.18
 E = 3,870.14

X0327172 REM AND REPL SIGN AND SUPPORTS
 STA. 310+31.79 103.81' RT TO
 STA. 310+41.92 104.26' RT
 (MOVE CLOSER TO THE PATH)
 1 EACH

40200800 AGGR SURF CRSE, TY B, 4"
 STA. 310+06.84 103.87' RT TO
 STA. 310+74.92 112.15' RT
 (BETWEEN PATH AND TIMBERS, AND BETWEEN TIMBERS AND SIDEWALK).
 31 TONS

PROP CURVE 1
 P.I. STA. = 304+23.92
 Δ = 63° 16' 41"
 D = 32° 44' 27"
 R = 175.00'
 T = 107.83'
 L = 193.27'
 E = 30.55'
 N = 4,954.72
 E = 4,022.19

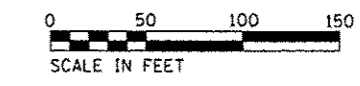
40200800 AGGR SURF CRSE, TY B, 4"
 STA. 305+01.46 10.21' LT TO
 STA. 312+70.28 7.43' LT
 97 TONS

21101600 TOPSOIL FURN & PLACE, VAR DEPTH
 STA. 305+01.46 10.21' LT TO
 STA. 312+70.28 7.43' LT
 456 SQ YD

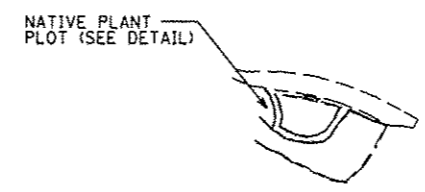
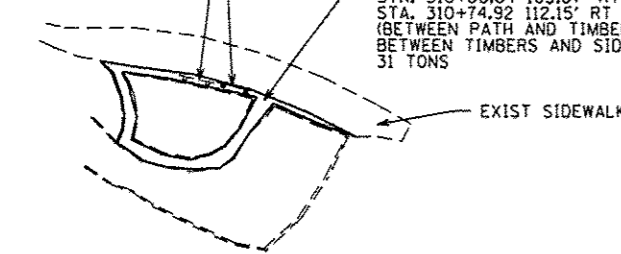
40200800 AGGR SURF CRSE, TY B, 4"
 STA. 312+76.71 7.67' LT TO
 STA. 325+00.36 8.81' RT
 168 TONS

21101600 TOPSOIL FURN & PLACE, VAR DEPTH
 STA. 312+76.71 7.67' LT TO
 STA. 325+00.36 8.81' RT
 725 SQ YD

P.I. STA. 325+02.63
 N = 6,735.49
 E = 4,926.12



NATIVE PLANT PLOT

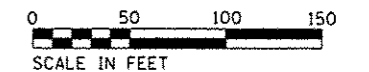
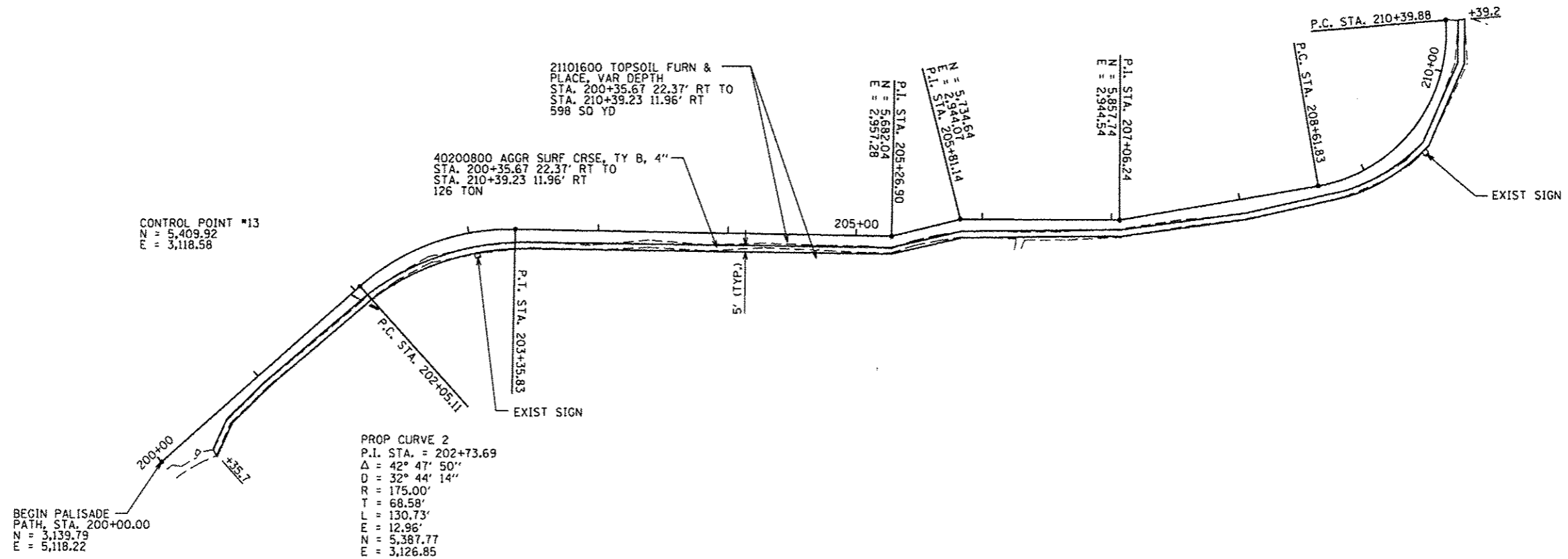


FILE NAME =	USER NAME = briamm	DESIGNED -	REVISED -	STATE OF ILLINOIS DEPARTMENT OF TRANSPORTATION	PALISADE PATH AND NATIVE PLANT PLOT CAHOKIA MOUNDS STATE HISTORIC SITE	F.A. RTE.	SECTION	COUNTY	TOTAL SHEETS	SHEET NO.
S:\CAD Drawings\CAD Drawings\250\250-061-AE Cahokia Mounds\eh1.09 Palisade Path.dgn	DATE = 3/16/2016	CHECKED -	REVISED -			ST. CLAIR	14	9		
Default	PLOT SCALE = 1/8" = 50'	DATE -	REVISED -			CONTRACT NO. 46405				
	PLOT DATE = 3/16/2016					ILLINOIS FED. AID PROJECT				



PROP CURVE 3
 P.I. STA. = 209+69.81
 Δ = 85° 00' 36"
 D = 47° 44' 52"
 R = 120.00'
 T = 107.98'
 L = 178.04'
 E = 42.77'
 N = 5,990.51
 E = 2,799.69

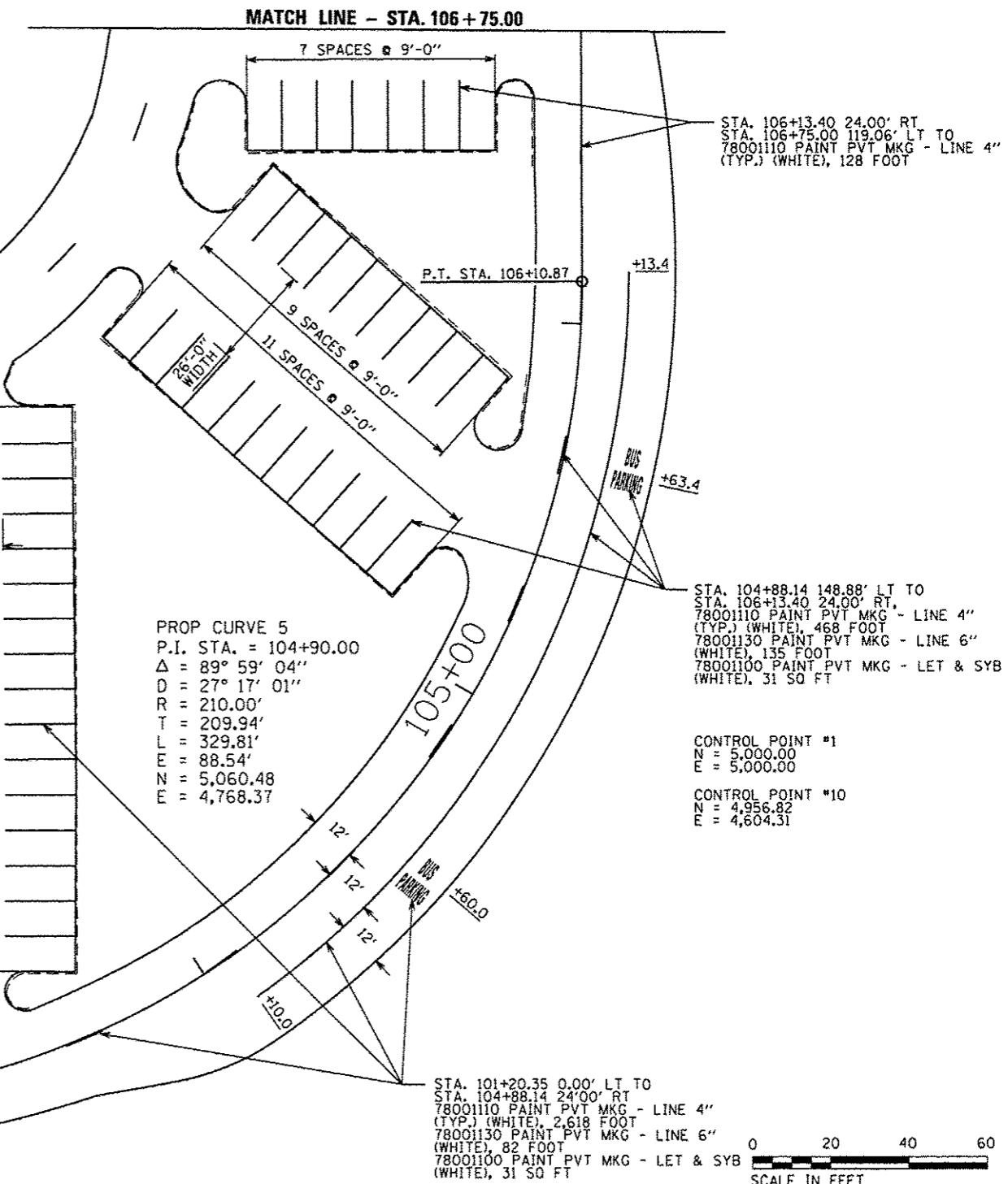
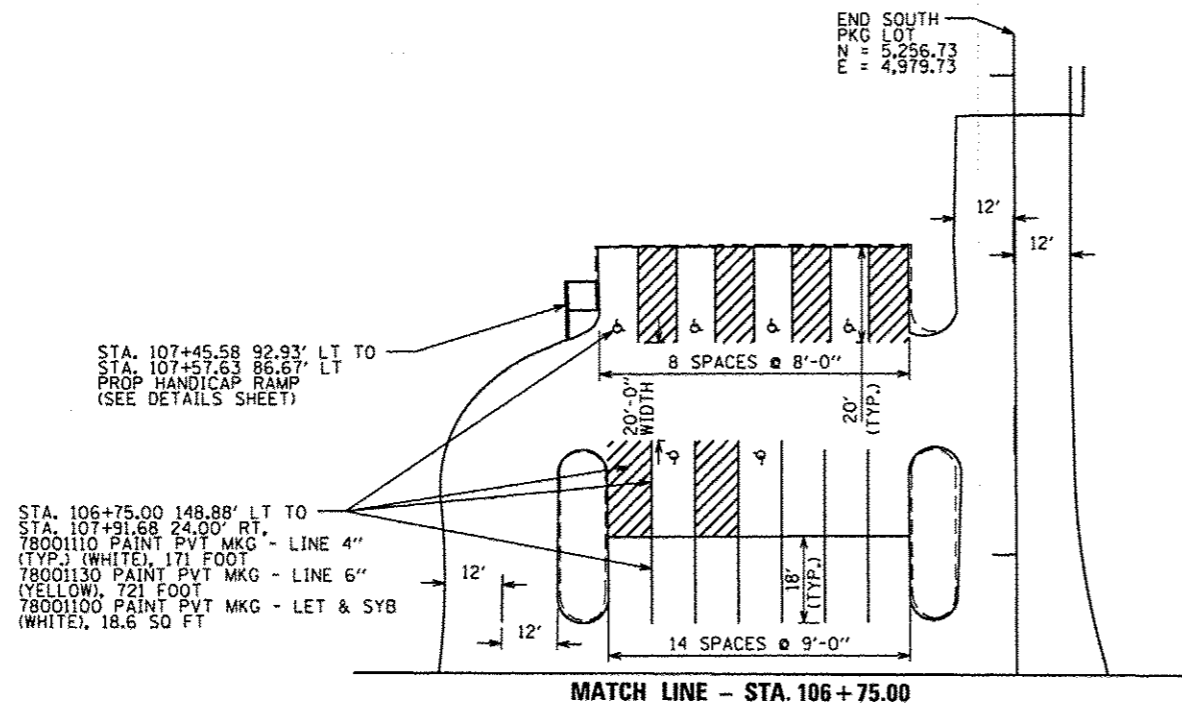
NOTE: BEFORE PLACEMENT OF THE SURFACE AGGREGATE,
 THE EXISTING VEGETATION ON THE PATH WILL BE
 REMOVED AND HERBICIDE SPRAYING SHALL BE DONE.



FILE NAME =	USER NAME = brianm	DESIGNED -	REVISED -	STATE OF ILLINOIS DEPARTMENT OF TRANSPORTATION	PALISADE PATH CAHOKIA MOUNDS STATE HISTORIC SITE	F.A. RTE.	SECTION	COUNTY	TOTAL SHEETS	SHEET NO.
S:\CAD Drawings\CAD Drawings\250\250-081-AE Cahokia Mounds\shl.10 Palisade.dwg	DRW:shl.10	REVISOR -	REVISOR -			ST. CLAIR	14	10		
PLOT SCALE = 1/8" = 1' / in	CHECKED -	REVISOR -	REVISOR -			CONTRACT NO. 46405				
Default	DATE -	REVISOR -	REVISOR -			ILLINOIS FED. AID PROJECT				
					SCALE: 1" = 50'	SHEET 2 OF 2 SHEETS		STA. 200+00.00 TO STA. 210+39.88		



NOTE: USE THE QUANTITIES
 100 FOOT CURB REMOVAL
 100 FOOT CONC. CURB, TY B
 TO FIX ANY MISCELLANEOUS
 BROKEN CURB IN THE LOT
 PRIOR TO RESURFACING.



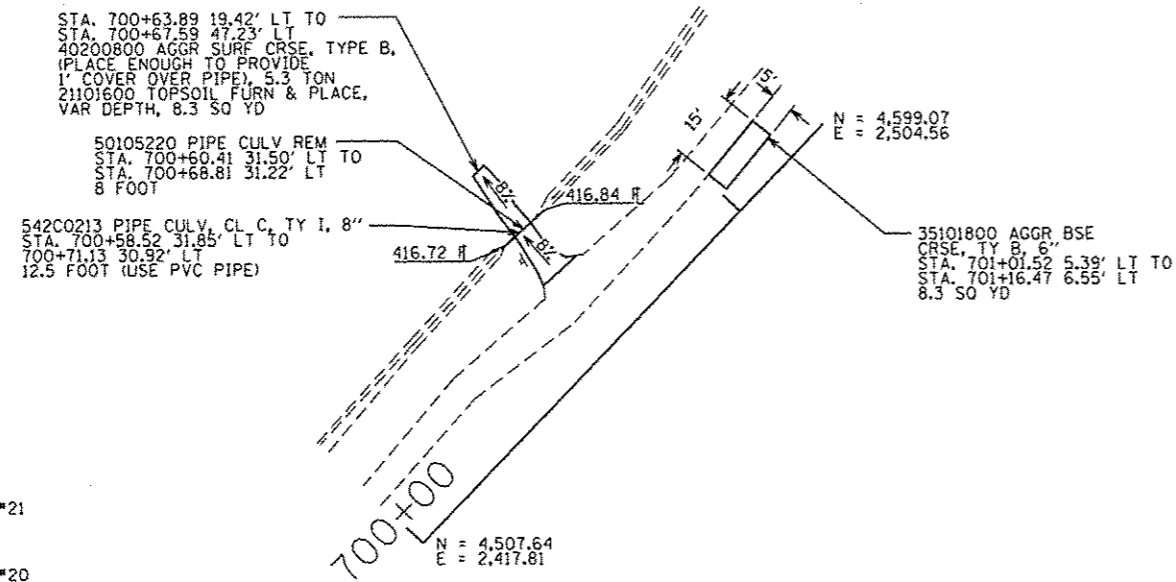
45100200 CRACK FILLING (ENTIRE
 PARKING LOT)
 STA. 100+00.00 TO STA. 107+91.74
 2,400 POUND

X0327308 PKG LOT SEAL COAT
 (ENTIRE PARKING LOT)
 STA. 100+00.00 TO STA. 107+91.74
 2,788 GAL

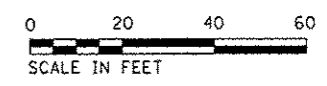
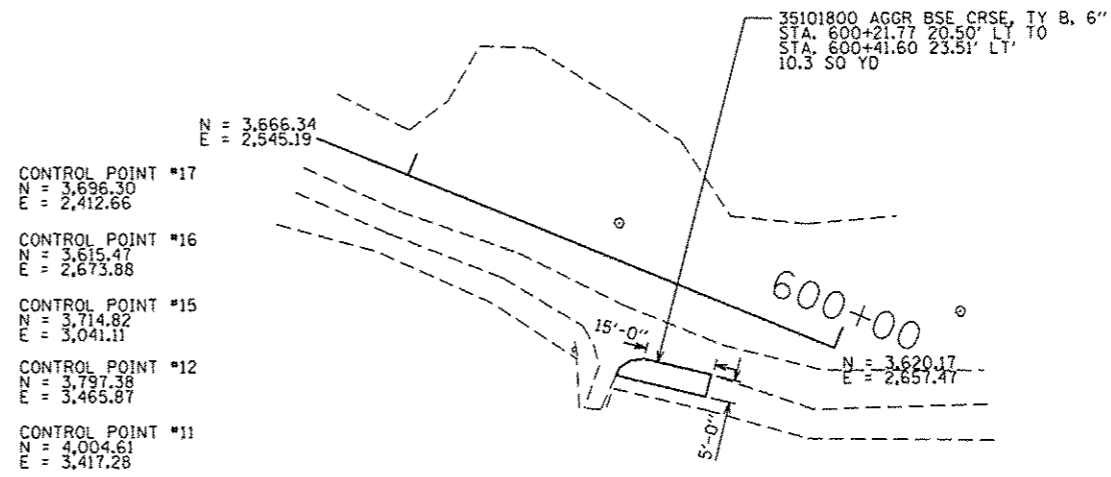
78001110 PAINT PVT MKG - LINE 4"
 (TYP.) (WHITE)
 STA. 100+00.00 LT TO
 STA. 101+20.35 LT
 539 FOOT

78001130 PAINT PVT MKG -
 LINE 4" (TYP.) (YELLOW HATCHING)
 STA. 100+00.00 LT TO
 STA. 101+20.35 LT
 697 FOOT

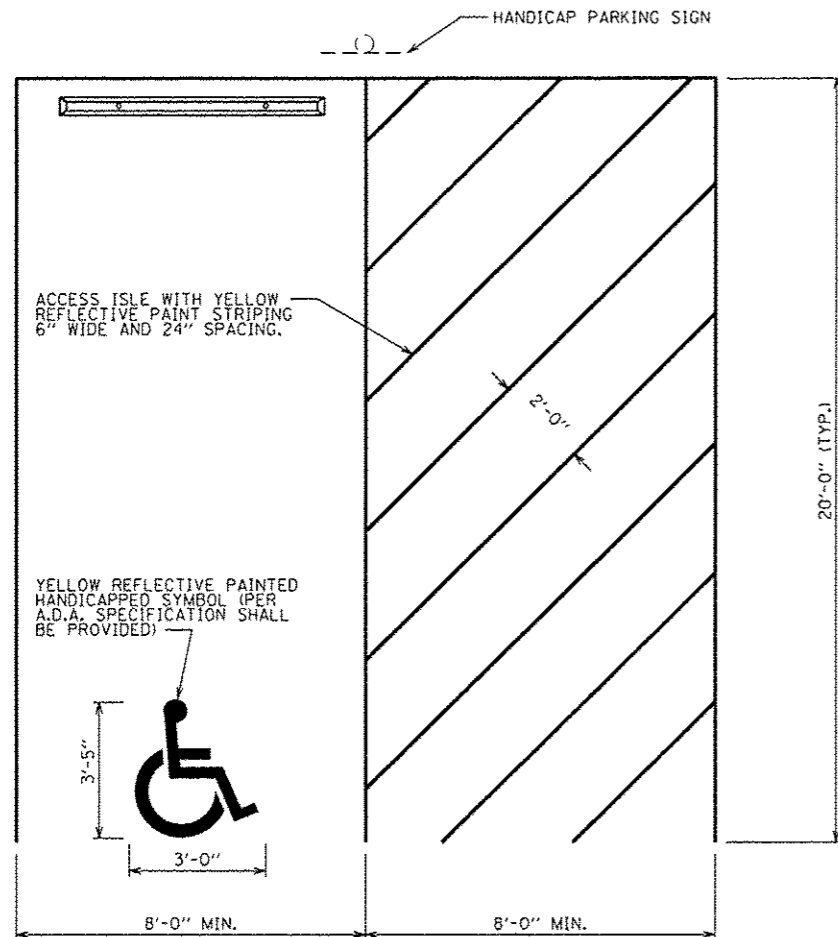
FILE NAME =	USER NAME = brianm	DESIGNED -	REVISED -	STATE OF ILLINOIS DEPARTMENT OF TRANSPORTATION	SOUTH PARKING LOT CAHOKIA MOUNDS STATE HISTORIC SITE		F.A. RTE.	SECTION	COUNTY	TOTAL SHEETS	SHEET NO.		
S:\CAD Drawings\CAD Drawings\250\258-061-AE Cahokia Mounds\shl.11 South DRAWN Lot.shLdgn					SCALE: 1" = 20'	SHEET	OF	SHEETS	STA. 100+00.00	TO STA. 107+91.74	ST. CLAIR	14	11
Default	PLOT SCALE = 48,00000' / in.	CHECKED -	REVISED -		CONTRACT NO. 46405								
	PLOT DATE = 3/17/2016	DATE -	REVISED -		ILLINOIS FED. AID PROJECT								



- CONTROL POINT #21
N = 4,405.93
E = 2,279.07
- CONTROL POINT #20
N = 4,174.07
E = 2,160.19
- CONTROL POINT #19
N = 3,762.95
E = 2,088.38
- CONTROL POINT #18
N = 3,658.67
E = 2,163.02

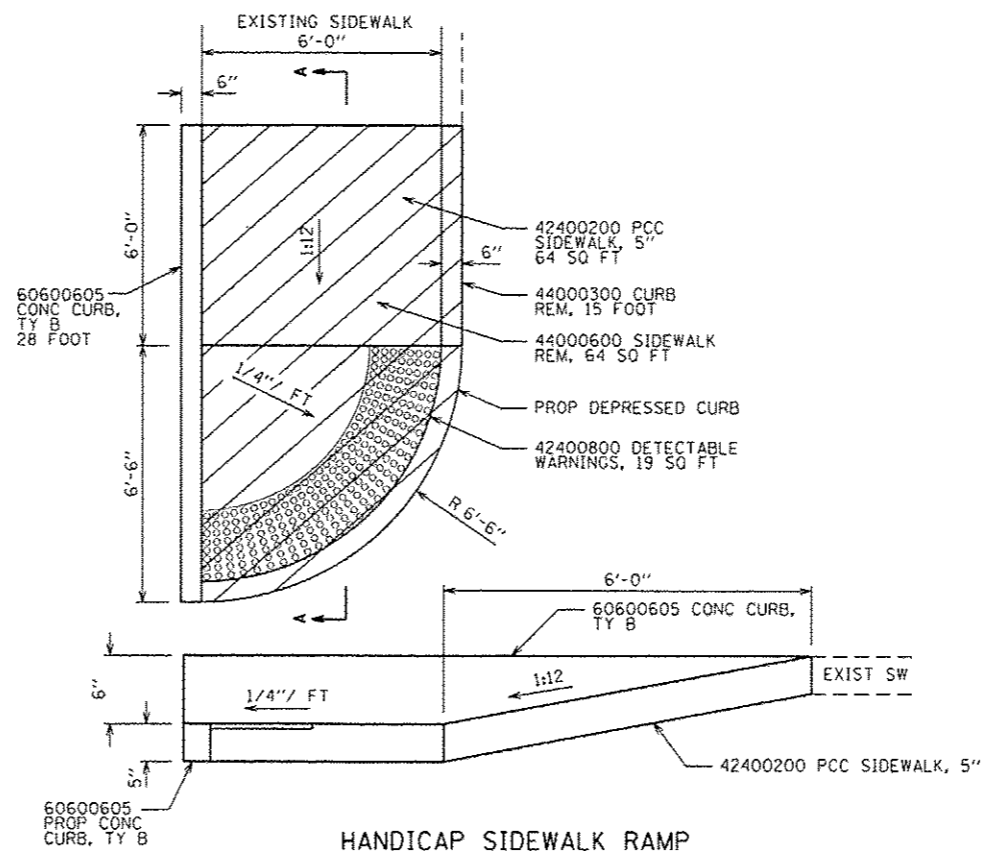


FILE NAME = S:\CAD Drawings\CAD Drawings\CAD Drawings\258\258-001-AE Cahokia Mounds\sh.t.12 LittleTwinMoundsPath.shxdgn	USER NAME = brianm	DESIGNED -	REVISED -	STATE OF ILLINOIS DEPARTMENT OF TRANSPORTATION	LITTLE TWIN MOUNDS PATH CAHOKIA MOUNDS STATE HISTORIC SITE	F.A. RTE.	SECTION	COUNTY	TOTAL SHEETS	SHEET NO.
Default	PLOT SCALE = 40.0000' / 1" =	CHECKED -	REVISED -			ST. CLAIR	14	12		
PLOT DATE = 6/29/2016	DATE -	REVISED -	SCALE: 1" = 20'			SHEET OF SHEETS	STA. TO STA.	(ILLINOIS) FED. AID PROJECT		
						CONTRACT NO. 46405				



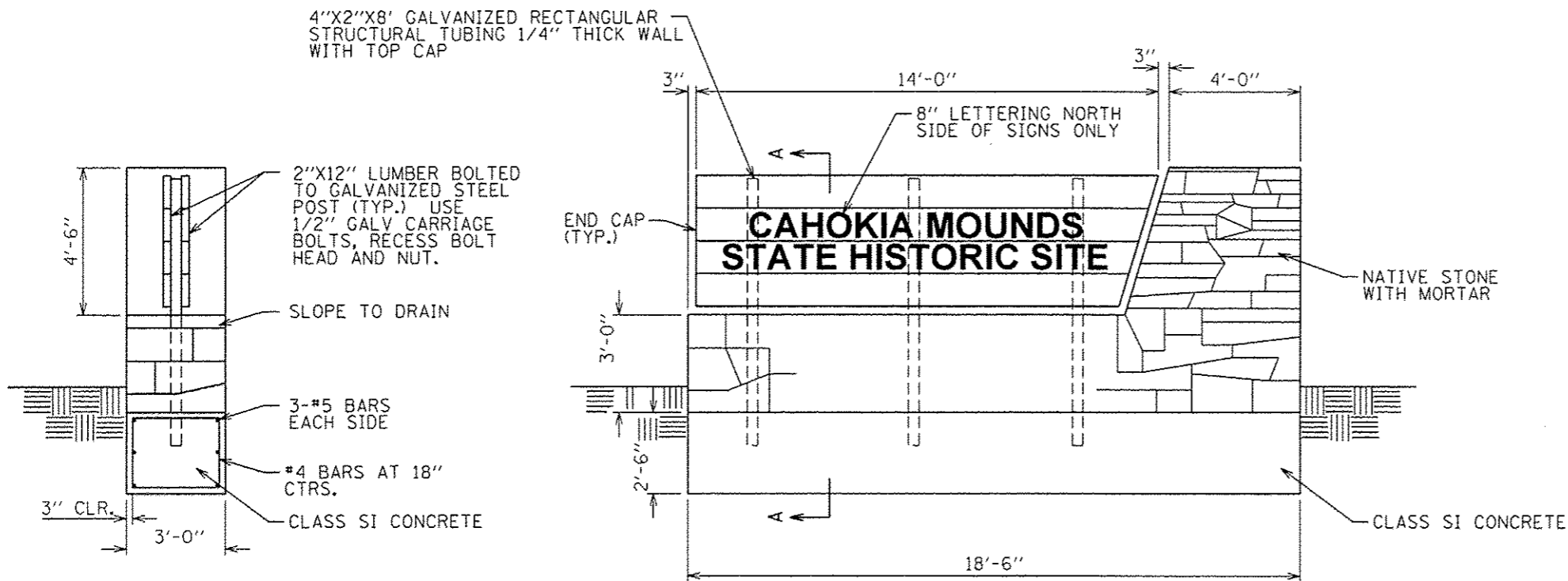
HANDICAP PARKING SPACE DETAIL

X0327172 REMOVE AND REPLACE SIGN AND SUPPORTS



HANDICAP SIDEWALK RAMP (NOT TO SCALE)

FILE NAME :	USER NAME :	DESIGNED -	REVISED -	STATE OF ILLINOIS DEPARTMENT OF TRANSPORTATION	DETAILS			F.A.	SECTION	COUNTY	TOTAL	SHEET
S:\CAD Drawings\CAD Drawings\CAD Drawings\258\258-061-AE Cahokia Mounds\shh.13 Det	BRANKIN	CHECKED -	REVISED -		CAHOKIA MOUNDS STATE HISTORIC SITE			RTE.		ST. CLAIR	SHEETS	NO.
Default	PLOT SCALE = 48.0000' / 1"	DATE -	REVISED -		SCALE:	SHEET	OF	SHEETS	STA.	TO STA.	14	13
	PLOT DATE = 6/29/2016									CONTRACT NO. 46405	ILLINOIS FED. AID PROJECT	



SECTION A-A

ELEVATION

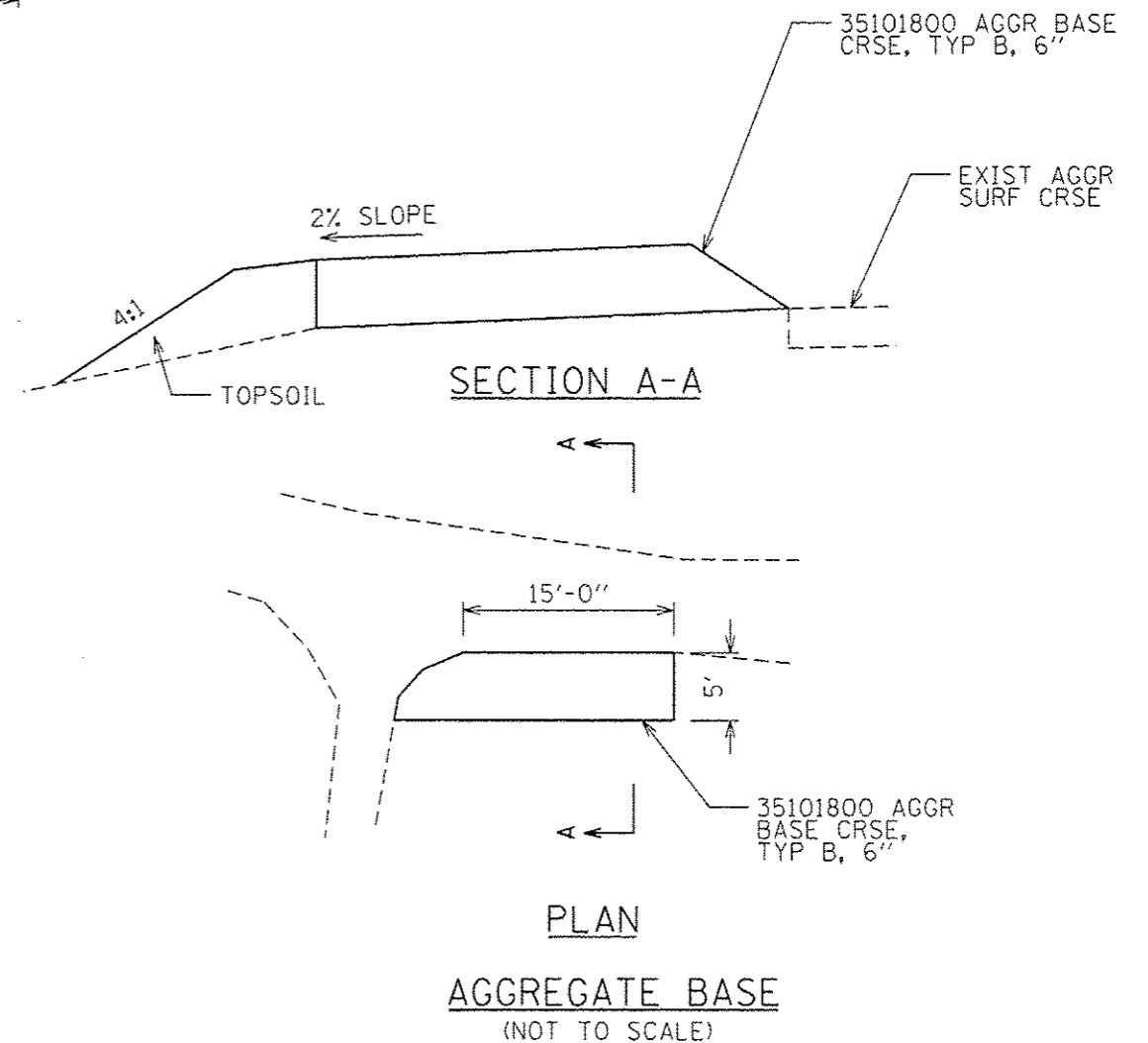
ENTRANCE SIGN
(NOT TO SCALE)

QUANTITIES PER SIGN

BAR	NUMBER	BAR	LENGTH
STIRRUP	12	#4	9'-6"
HORIZONTAL	6	#5	18'-0"

REINFORCEMENT BARS, EPOXY COATED (LB)	189
CLASS SI CONCRETE (CU YD)	5
4" X 2" GALV. STEEL TUBE (FOOT)	24
2" X 12" LUMBER (FOOT)	53
NATIVE STONE (CU YD)	9

THE MATERIALS REQUIRED TO CONSTRUCT THIS ENTRANCE SIGN WILL NOT BE PAID FOR SEPARATELY, BUT WILL BE INCLUDED THE PRICE PER LUMP SUM COST OF X0324062 "ENTRANCE SIGN".



PLAN
AGGREGATE BASE
(NOT TO SCALE)

FILE NAME =	USER NAME = brianm	DESIGNED -	REVISED -	STATE OF ILLINOIS DEPARTMENT OF TRANSPORTATION	DETAILS CAHOKIA MOUNDS STATE HISTORIC SITE		F.A. RTE.	SECTION	COUNTY	TOTAL SHEETS	SHEET NO.
S:\CAD Drawings\CAD Drawings\CAD Drawings\258\258-061-AE Cahokia Mounds\tbl14 Data	BRANNON	CHECKED -	REVISED -		SCALE: NTS	SHEET 2 OF 2 SHEETS	STA.	TO STA.	ST. CLAIR	14	14
Default	PLOT SCALE = 48.0000 1 / in.	DATE -	REVISED -						CONTRACT NO. 46405		
	PLOT DATE = 6/29/2016								ILLINOIS FED. AID PROJECT		