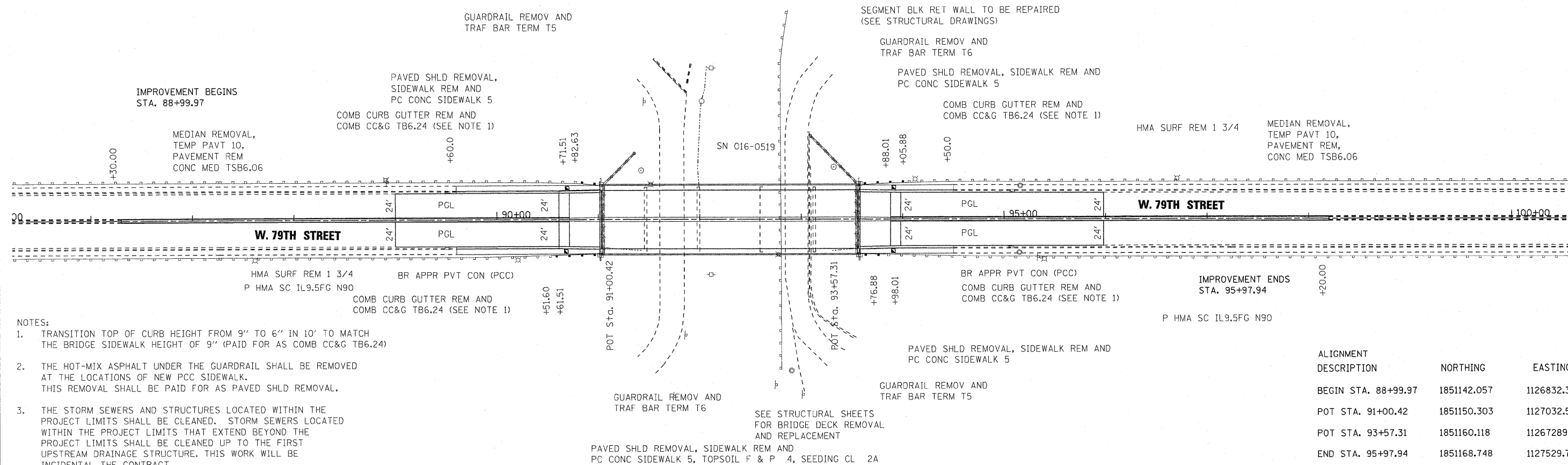


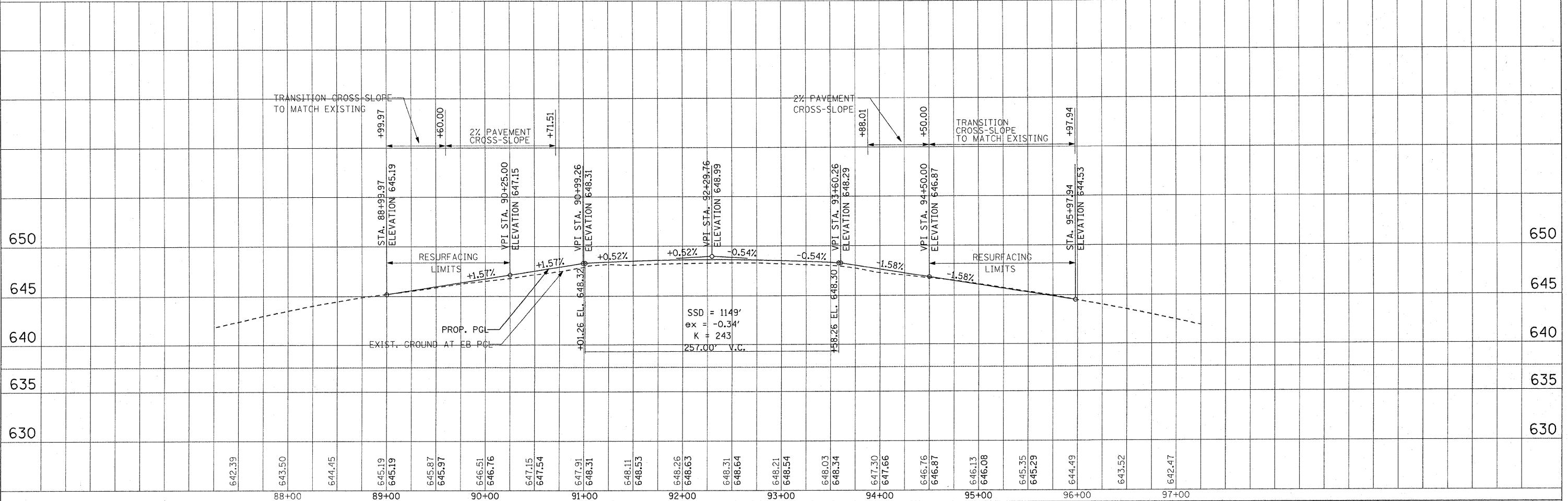
DATE	
BY	
PLAN	
NO.	
DATE	
BY	
PROF. FILE	
NO.	
DATE	
BY	

DATE	
BY	
PROF. FILE	
NO.	
DATE	
BY	



- NOTES:
- TRANSITION TOP OF CURB HEIGHT FROM 9" TO 6" IN 10' TO MATCH THE BRIDGE SIDEWALK HEIGHT OF 9" (PAID FOR AS COMB CC&G TB6.24)
 - THE HOT-MIX ASPHALT UNDER THE GUARDRAIL SHALL BE REMOVED AT THE LOCATIONS OF NEW PCC SIDEWALK. THIS REMOVAL SHALL BE PAID FOR AS PAVED SHLD REMOVAL.
 - THE STORM SEWERS AND STRUCTURES LOCATED WITHIN THE PROJECT LIMITS SHALL BE CLEANED. STORM SEWERS LOCATED WITHIN THE PROJECT LIMITS THAT EXTEND BEYOND THE PROJECT LIMITS SHALL BE CLEANED UP TO THE FIRST UPSTREAM DRAINAGE STRUCTURE. THIS WORK WILL BE INCIDENTAL THE CONTRACT.

ALIGNMENT DESCRIPTION	NORTHING	EASTING
BEGIN STA. 88+99.97	1851142.057	1126832.316
POT STA. 91+00.42	1851150.303	1127032.595
POT STA. 93+57.31	1851160.118	11267289.258
END STA. 95+97.94	1851168.748	1127529.774



FILE NAME =	DESIGNED - RJD	REVISED - RJD 6/11/2010	STATE OF ILLINOIS DEPARTMENT OF TRANSPORTATION	79TH STREET OVER B & OCT & IHB RAILROAD EXISTING & PROPOSED PLAN AND PROFILE		F.A.U. RTE.	SECTION	COUNTY	TOTAL SHEETS	SHEET NO.
#FILEL#	DRAWN - ADW	REVISED -				1548	461 (VB & VF) I	COOK	52	6
	CHECKED - TWL	REVISED -				CONTRACT NO. 60H65				
	DATE - 06/11/2010	REVISED -				FED. ROAD DIST. NO. ILLINOIS FED. AID PROJECT				

SCALE: 1"=50' SHEET NO. 1 OF 1 SHEETS STA. TO STA.

