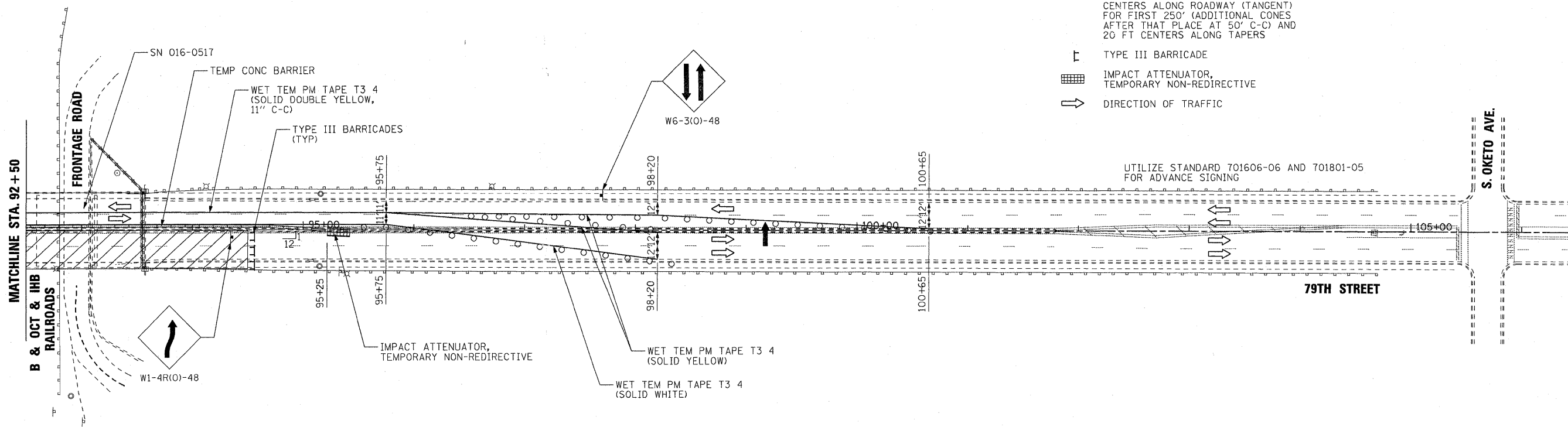


- LEGEND:**
- WORK AREA
 - TEMPORARY CONCRETE BARRIER
 - ARROW BOARD
 - SIGN
 - TYPE II BARRICADE OR DRUM WITH STEADY BURNING LIGHTS @ 25 FT CENTERS ALONG ROADWAY (TANGENT) FOR FIRST 250' (ADDITIONAL CONES AFTER THAT PLACE AT 50' C-C) AND 20 FT CENTERS ALONG TAPERS
 - TYPE III BARRICADE
 - IMPACT ATTENUATOR, TEMPORARY NON-REDIRECTIVE
 - DIRECTION OF TRAFFIC



FILE NAME = \$FILEL\$		DESIGNED RJD	REVISED -	STATE OF ILLINOIS DEPARTMENT OF TRANSPORTATION	SUGGESTED STAGE OF CONSTRUCTION & TRAFFIC CONTROL			F.A.U. RTE.	SECTION	COUNTY	TOTAL SHEETS	SHEET NO.
		DRAWN ADW	REVISED -		STAGE 2			1548	461 (VB & VF) I	COOK	52	11
CHECKED TWL	REVISED -	79TH STREET OVER B & OCT & IHB RAILROAD			SCALE: 1" = 50' SHEET NO. OF SHEETS STA. TO STA.			CONTRACT NO. 60H65				
DATE 06/14/2010	REVISED -	ILLINOIS FED. AID PROJECT										