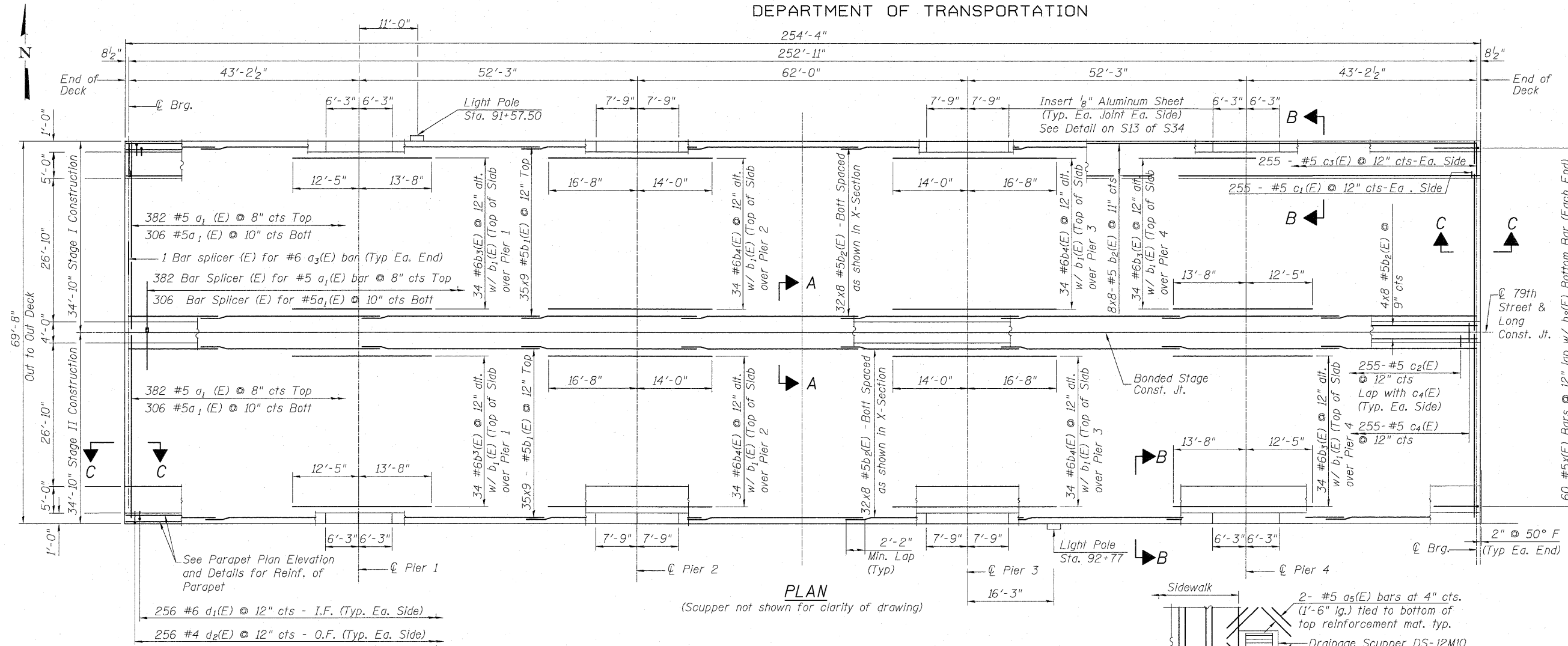


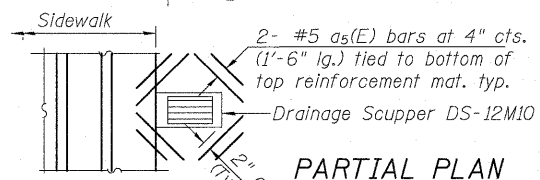
STATE OF ILLINOIS
DEPARTMENT OF TRANSPORTATION

**SUPERSTRUCTURE
BILL OF MATERIAL**



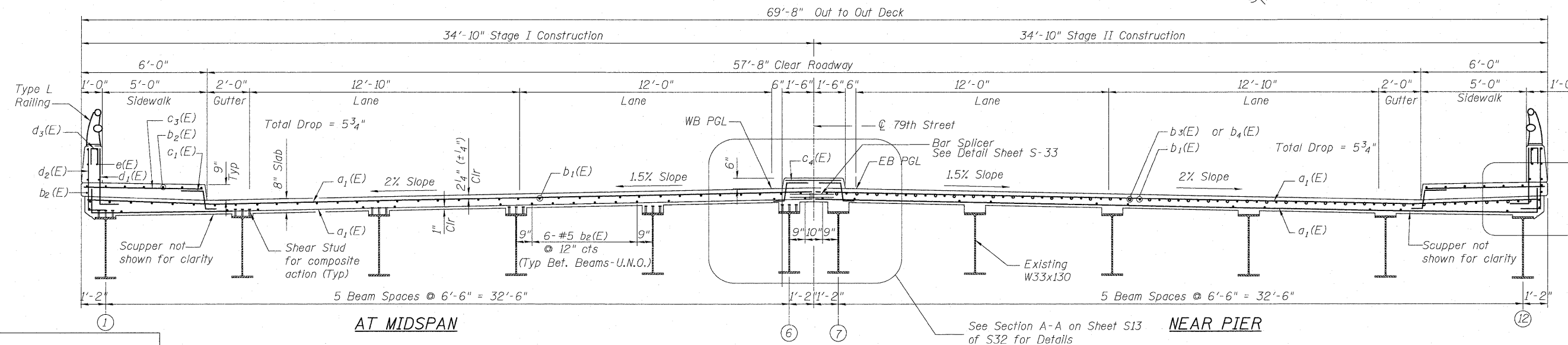
Bar No.	Size	Length	Shape
a ₁ (E)	1376	#5	34'-5"
a ₂ (E)	60	#6	7'-7"
a ₃ (E)	4	#6	34'-5"
a ₄ (E)	6	#6	3'-6"
a ₅ (E)	32	#5	1'-6"
b ₁ (E)	630	#5	31'-2"
b ₂ (E)	672	#5	34'-8"
b ₃ (E)	136	#6	26'-1"
b ₄ (E)	136	#6	30'-8"
b ₅ (E)	24	#4	30'-0"
c ₁ (E)	510	#5	2'-4"
c ₂ (E)	510	#5	2'-1"
c ₃ (E)	510	#5	5'-8"
c ₄ (E)	255	#5	2'-6"
d ₁ (E)	512	#6	3'-10"
d ₂ (E)	512	#4	3'-10"
d ₃ (E)	100	#4	2'-0"
d ₄ (E)	6	#6	4'-3"
d ₅ (E)	10	#6	8'-11"
e ₁ (E)	48	#4	16'-6"
e ₂ (E)	48	#4	6'-0"
e ₃ (E)	48	#4	18'-10"
e ₄ (E)	48	#4	7'-6"
e ₅ (E)	36	#4	15'-3"
u ₁ (E)	100	#4	2'-9"
x(E)	60	#5	6'-5"

Item	Unit	Total
Reinforcement Bars, Epoxy Coated	Pound	120,400
Concrete Superstructure	Cu. Yd.	600.0
Bar Splicers	Each	690
Bridge Deck Grooving	Sq. Yd.	1404
Protective Coat	Sq. Yd.	2245
Name Plates	Each	1
Protective Shield	Sq. Yd.	1545



MIN. BAR LAP
#4 - 2'-7"
#5 - 3'-3"

Note:
I.F. = Denotes Inside Face
O.F. = Denotes Outside Face
U.N.O. = Unless Noted Otherwise
* = For estimate purposes only.
Final Numbers will be determined during construction.



**SUPERSTRUCTURE PLAN
CROSS SECTION &
BILL OF MATERIAL
STRUCTURE NO. 016-0519**

DESIGNED JPM
CHECKED TG
DRAWN MPS
CHECKED JPM, TG



Notes:
1. Reinforcement Bars designated thus: 32x8 - #5, etc indicates 32 lines of bars with 8 lengths per line.
2. See Sheet S13 for Sections A-A, B-B & C-C

BRIDGE CROSS SECTION
Looking East

SHEET NO. S12	F.A.U. RTE.	SECTION	COUNTY	TOTAL SHEETS	SHEET NO.
	S34 SHEETS	1548	461 (VB&VF) I	COOK	52
DATE: 06-22-2010			ILLINOIS FED. AID PROJECT		