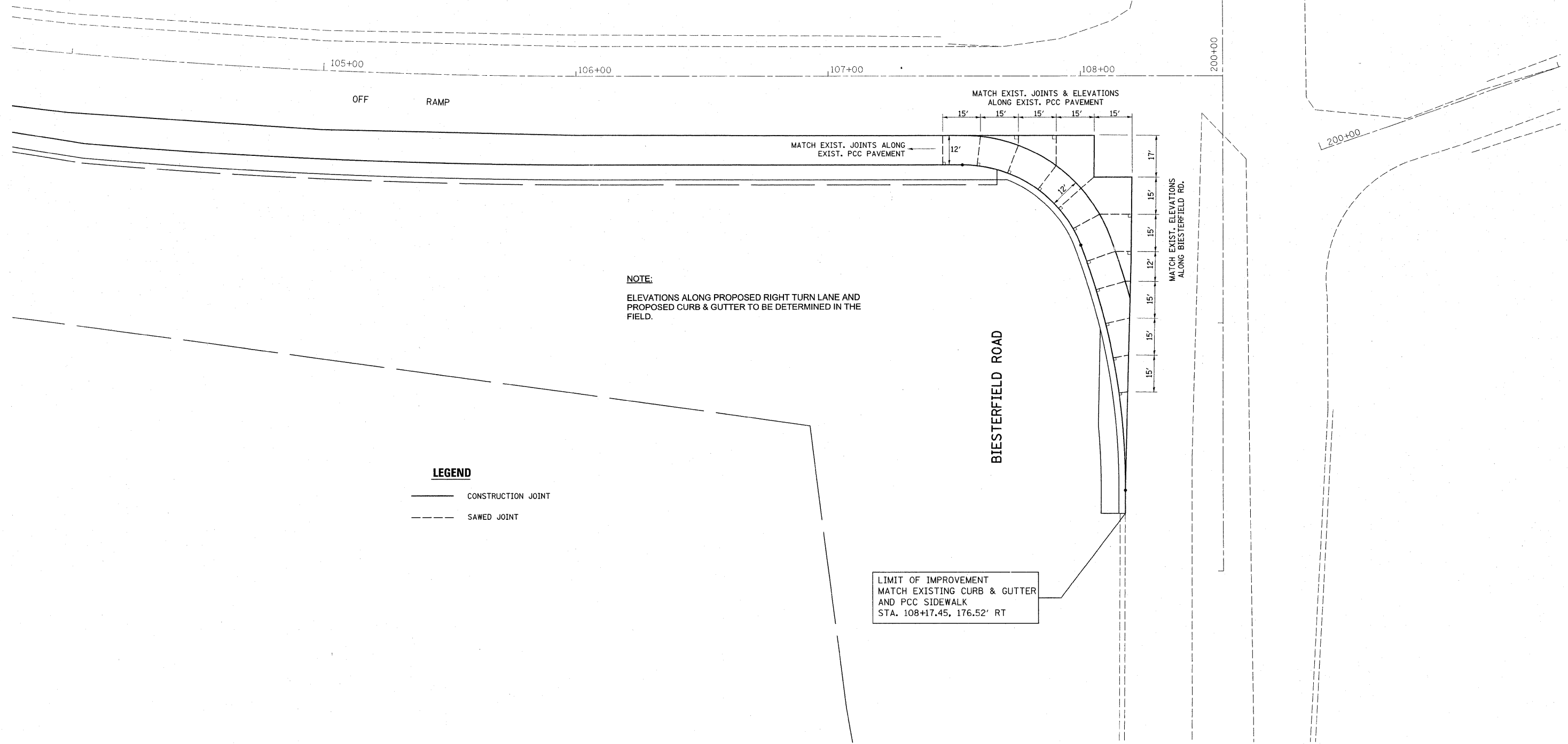




I-290 SB EXIT RAMP



NOTE:
ELEVATIONS ALONG PROPOSED RIGHT TURN LANE AND PROPOSED CURB & GUTTER TO BE DETERMINED IN THE FIELD.

LEGEND

- CONSTRUCTION JOINT
- - - SAWED JOINT

LIMIT OF IMPROVEMENT
MATCH EXISTING CURB & GUTTER
AND PCC SIDEWALK
STA. 108+17.45, 176.52' RT

FILE NAME =	USER NAME = bauerdl	DESIGNED -	REVISED -
ct:\pwork\pwidot\BAUERDL\0155799\141009-shc-Plan.dgn		DRAWN -	REVISED -
		CHECKED -	REVISED -
		DATE -	REVISED -

**STATE OF ILLINOIS
DEPARTMENT OF TRANSPORTATION**

**I-290 @ BIESTERFIELD SOUTHBOUND EXIT RAMP
JOINT DETAIL**

SCALE: 1"=20' SHEET NO. OF SHEETS STA. TO STA.

F.A.I. RTE.	SECTION	COUNTY	TOTAL SHEETS	SHEET NO.
290	0101-311 HBK-1	COOK	44	14
CONTRACT NO. 60J32			ILLINOIS FED. AID PROJECT	