

F.A. RTE.	SECTION	COUNTY	TOTAL SHEETS	SHEET NO.
344	97B-1-1	COOK	16	1
FED ROAD DIST No. 1		ILLINOIS	CONTRACT No. 60J60	

STATE OF ILLINOIS
DEPARTMENT OF TRANSPORTATION
DIVISION OF HIGHWAYS

PROPOSED
HIGHWAY PLANS

FAP 344 / IL 83 (ELMHURST RD.) AT McDONALD CREEK
BRIDGE DECK OVERLAY, JOINT REPAIR
SECTION 97 B-1-1
PROJECT NO. NHF-0344(051)
COOK COUNTY
C-91-250-10

FOR INDEX OF SHEETS, SEE SHEET NO. 2

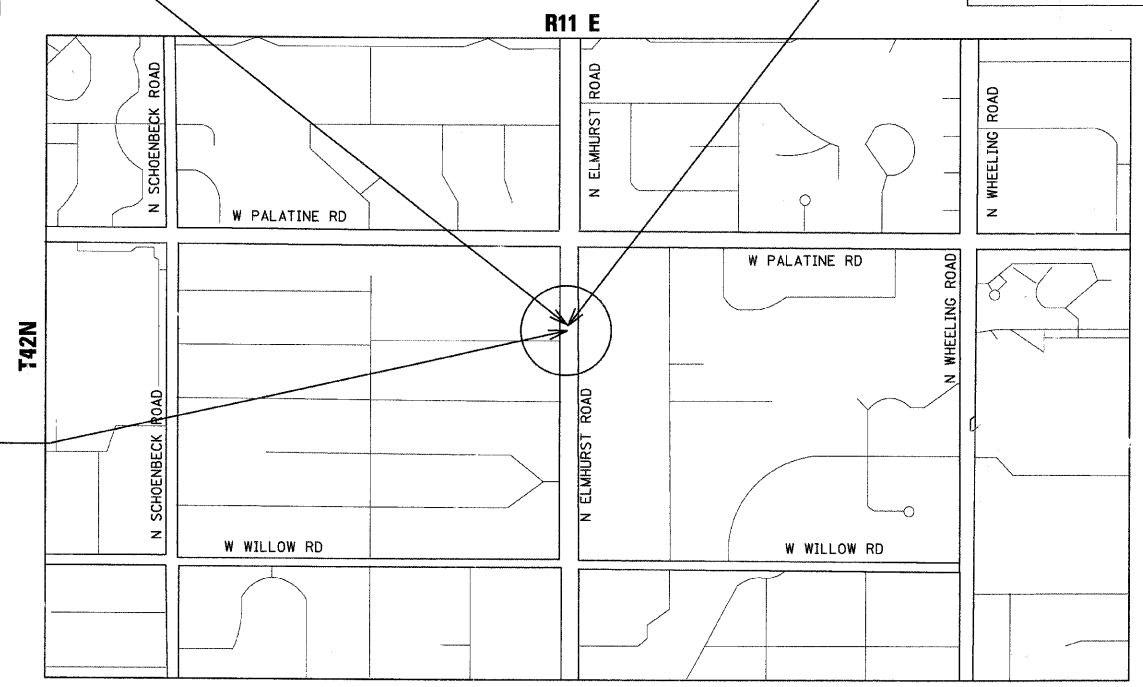
TRAFFIC DATA:
EXISTING ADT IL 83 20300 (2007)
POSTED SPEED = 40 MPH



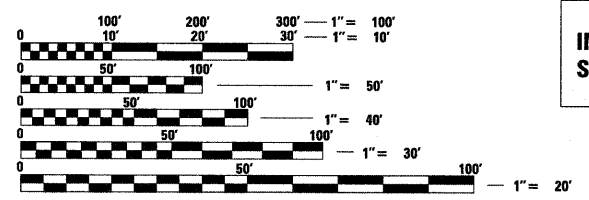
PROJECT LOCATION
IL 83 OVER McDONALD CREEK
STRUCTURE NO. 016-0558

IMPROVEMENT ENDS
STA. 744 + 00.00

IMPROVEMENT BEGINS
STA. 743 + 36.83



PROJECT IS LOCATED IN THE
CITY OF PROSPECT HEIGHTS



FULL SIZE PLANS HAVE BEEN PREPARED USING STANDARD ENGINEERING SCALES. REDUCED SIZED PLANS WILL NOT CONFORM TO STANDARD SCALES. IN MAKING MEASUREMENTS ON REDUCED PLANS, THE ABOVE SCALES MAY BE USED.

J.U.L.I.E.
JOINT UTILITY LOCATION INFORMATION FOR EXCAVATION
1-800-892-0123 OR 811

PROJECT MANAGER RAJENDRA SHAH (847) 705-4555
PROJECT ENGINEER MICHELLE AQUINO (847) 705-4606
CONTRACT NO. 60J60

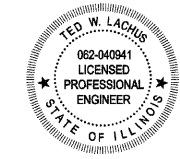
GROSS LENGTH OF PROJECT = 63.17 FEET = 0.012 MILES
NET LENGTH OF PROJECT = 63.17 FEET = 0.012 MILES

STATE OF ILLINOIS
DEPARTMENT OF TRANSPORTATION
DIVISION OF HIGHWAYS

SUBMITTED JANUARY 22, 2010
Diana M. O'Keefe *gc*
DEPUTY DIRECTOR OF HIGHWAYS, REGION ENGINEER
March 19 2010
Scott E. Stitt, P.E. *ka*
ACTING ENGINEER OF DESIGN AND ENVIRONMENT
March 19 2010
Christina M. Reed *ka*
DIRECTOR OF HIGHWAYS, CHIEF ENGINEER

PRINTED BY THE AUTHORITY
OF THE STATE OF ILLINOIS

Primera
100 S. WACKER DRIVE SUITE 700. CHICAGO IL 60606.
P:312-606-0910 F:312-606-0415



Ted W. Lachus
TED W. LACHUS, P.E.
EXPIRES 11-30-2011
DATE 1-29-2010