

ROUTE IL 38

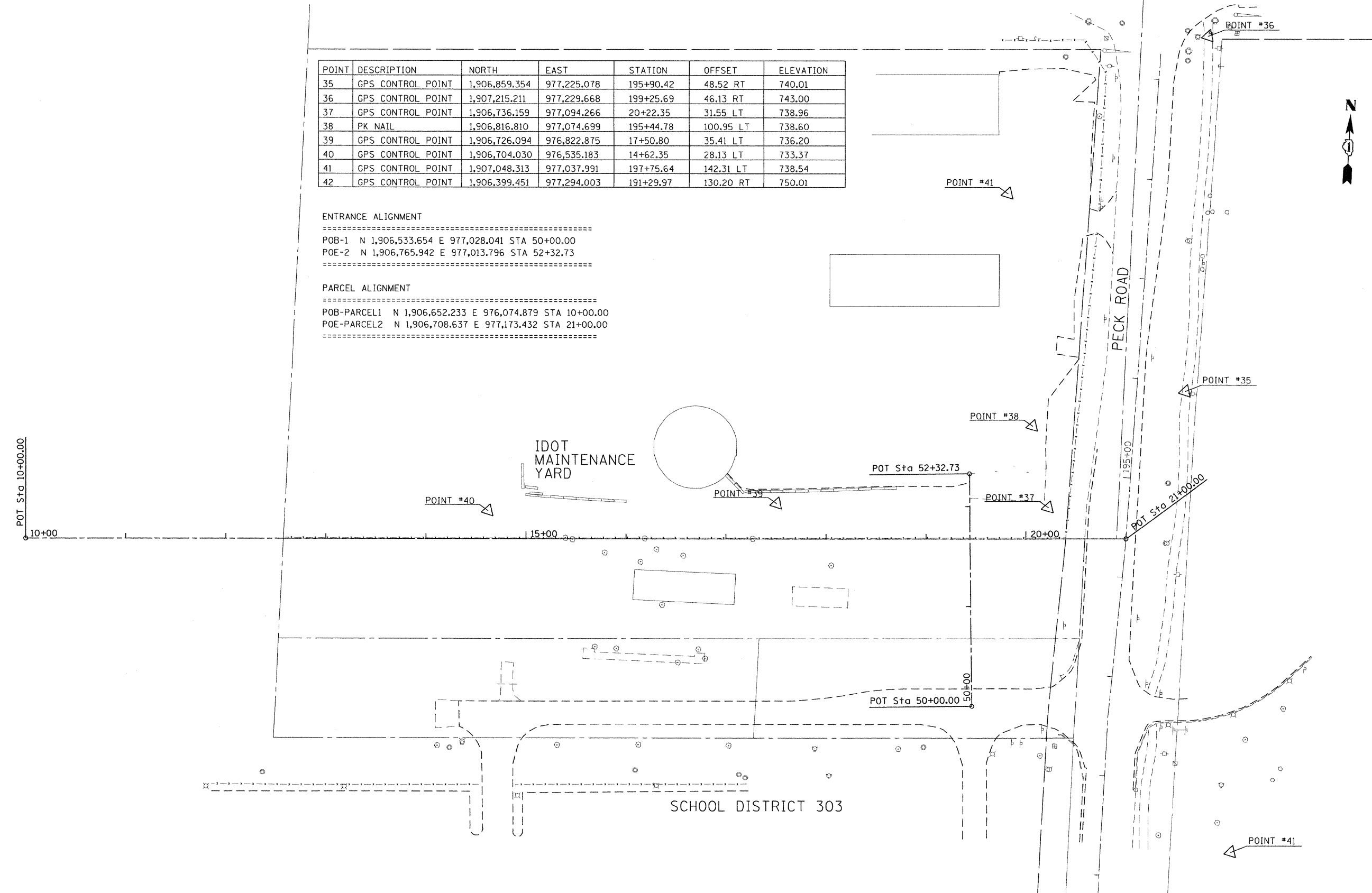
POINT	DESCRIPTION	NORTH	EAST	STATION	OFFSET	ELEVATION
35	GPS CONTROL POINT	1,906,859.354	977,225.078	195+90.42	48.52 RT	740.01
36	GPS CONTROL POINT	1,907,215.211	977,229.668	199+25.69	46.13 RT	743.00
37	GPS CONTROL POINT	1,906,736.159	977,094.266	20+22.35	31.55 LT	738.96
38	PK NAIL	1,906,816.810	977,074.699	195+44.78	100.95 LT	738.60
39	GPS CONTROL POINT	1,906,726.094	976,822.875	17+50.80	35.41 LT	736.20
40	GPS CONTROL POINT	1,906,704.030	976,535.183	14+62.35	28.13 LT	733.37
41	GPS CONTROL POINT	1,907,048.313	977,037.991	197+75.64	142.31 LT	738.54
42	GPS CONTROL POINT	1,906,399.451	977,294.003	191+29.97	130.20 RT	750.01

ENTRANCE ALIGNMENT

POB-1 N 1,906,533.654 E 977,028.041 STA 50+00.00
 POE-2 N 1,906,765.942 E 977,013.796 STA 52+32.73

PARCEL ALIGNMENT

POB-PARCEL1 N 1,906,652.233 E 976,074.879 STA 10+00.00
 POE-PARCEL2 N 1,906,708.637 E 977,173.432 STA 21+00.00



FILE NAME : F:\2009\ME\090806_Ver-Var-Phil\CADD\013_IL38_Shts\0160K16-sh1-atb-01.dgn
 PLOT SCALE : 1"=50'
 USER NAME : Millennium Professional Services

200 22ND Street, Suite 214, Lombard, IL 60148
 630.705.0110 voice, 630.839.2566 fax
 WWW.MPS-IL.COM
MILLENNIA PROFESSIONAL SERVICES

DESIGNED - CJD	REVISED -
DRAWN - CJD	REVISED -
CHECKED - TVN	REVISED -
DATE - 6/1/2010	REVISED -

STATE OF ILLINOIS
DEPARTMENT OF TRANSPORTATION

ILLINOIS ROUTE 38
AT PECK ROAD

SCALE: 1"=50' SHEET NO. OF SHEETS STA. 10+00 TO STA. 21+00

F.A.P. RTE. 347	SECTION 4 R-T	COUNTY KANE	TOTAL SHEETS 20	SHEET NO. 5
CONTRACT NO. 60K16				

ATB-01

F:\2009\ME\090806_Ver-Var-Phil\CADD\013_IL38_Shts\0160K16-sh1-atb-01.dgn