

F.A.U. RTE.	SECTION	COUNTY	TOTAL SHEETS	SHEET NO.
1362	3200-RS-4	COOK	23	1
ILLINOIS		CONTRACT NO. 60L17		

STATE OF ILLINOIS
DEPARTMENT OF TRANSPORTATION
DIVISION OF HIGHWAYS

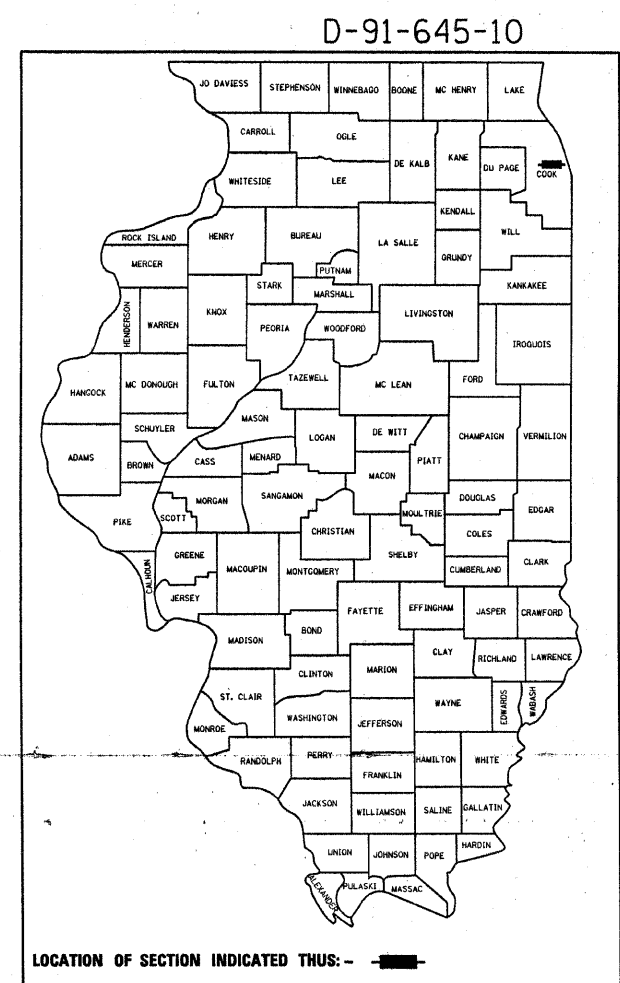
**PROPOSED
HIGHWAY PLANS**

FAP 1362: LAWRENCE AVENUE

SECTION: 3200-RS-4

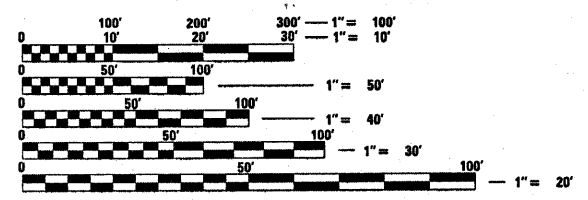
EAST RIVER ROAD TO 0.4 MILE WEST OF ILL 43

**RESURFACING
PROJECT: ACM-1362(003)
COOK COUNTY
C-91-645-10**



FOR INDEX OF SHEETS, SEE SHEET NO. 2

PROJECT IS LOCATED IN THE CITY OF CHICAGO AND THE VILLAGES OF NORRIDGE AND HARWOOD HEIGHTS

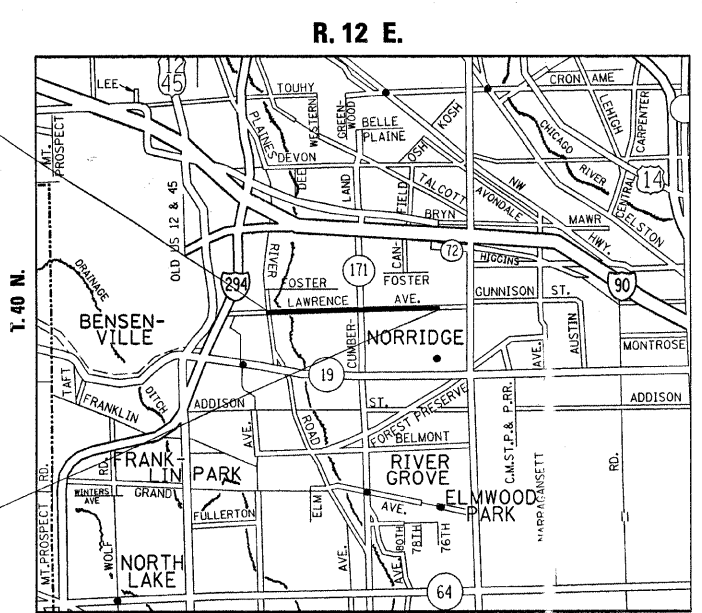


FULL SIZE PLANS HAVE BEEN PREPARED USING STANDARD ENGINEERING SCALES. REDUCED SIZED PLANS WILL NOT CONFORM TO STANDARD SCALES. IN MAKING MEASUREMENTS ON REDUCED PLANS, THE ABOVE SCALES MAY BE USED.

J.U.L.I.E.
JOINT UTILITY LOCATION INFORMATION FOR EXCAVATION
1-800-892-0123
OR 811

PROJECT ENGINEER DAN WILGREEN (847) 705-4240
PROJECT MANAGER KEN ENG (847) 705-4247

CONTRACT NO. 60L17



PROJECT BEGINS
STA. 9+43

PROJECT ENDS
STA. 96+44

NORWOOD PARK TOWNSHIP

TRAFFIC DATA
2006 ADT = 20,200

SPEED LIMIT = 35 MPH

GROSS AND NET LENGTH OF PROJECT = 8,701 FEET = 1.65 MILES

STATE OF ILLINOIS
DEPARTMENT OF TRANSPORTATION
DIVISION OF HIGHWAYS

SUBMITTED MAY 19, 2010

Diane M. O'Keefe
DEPUTY DIRECTOR OF HIGHWAYS, REGION ENGINEER

JUNE 25, 2010

Scott E. Stitt, P.E.
ENGINEER OF DESIGN AND ENVIRONMENT

JUNE 25, 2010

Christine M. Reed
DIRECTOR OF HIGHWAYS, CHIEF ENGINEER

PRINTED BY THE AUTHORITY
OF THE STATE OF ILLINOIS