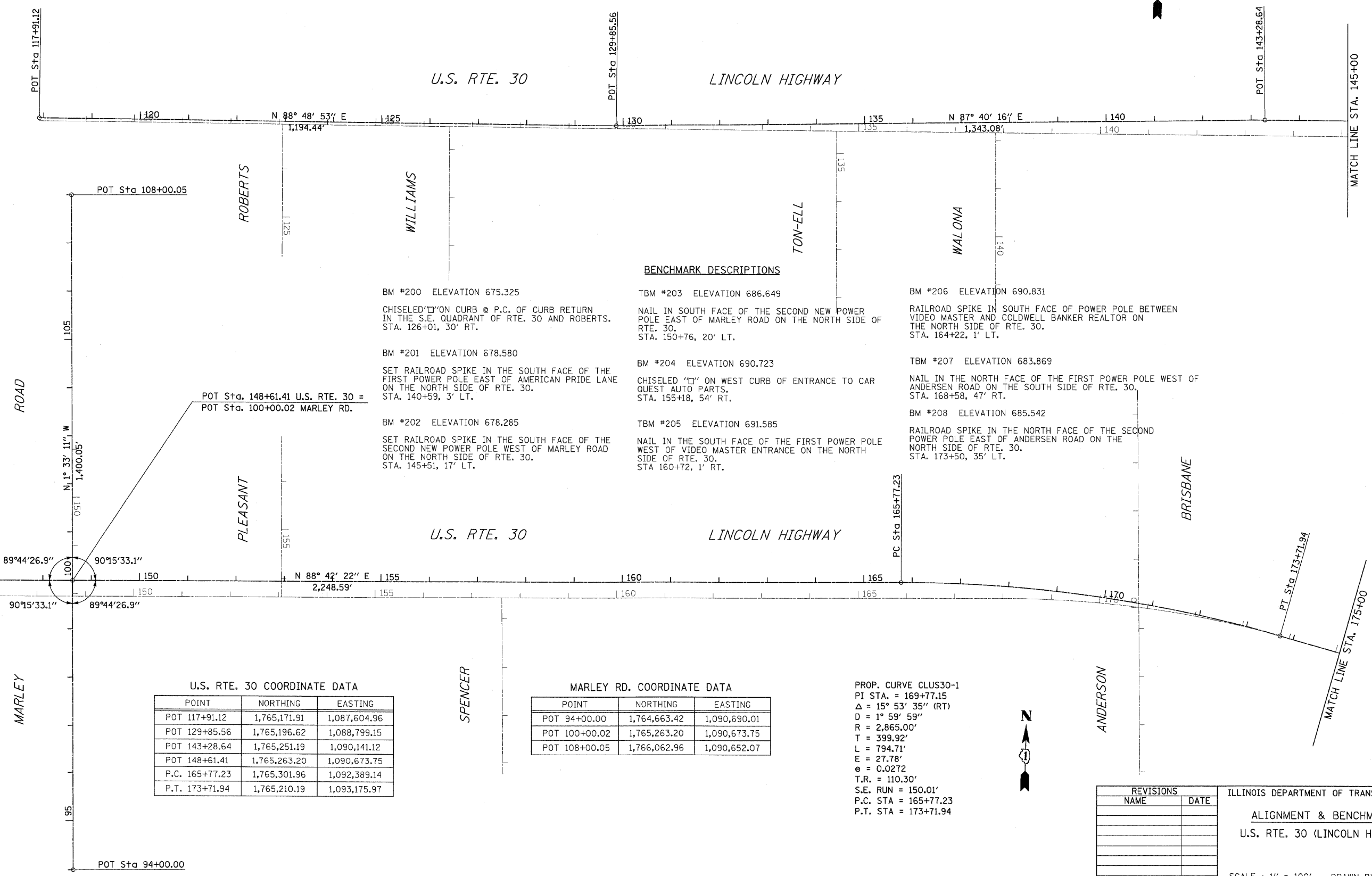


F.A.P. RTE.	SECTION	COUNTY	TOTAL SHEETS	SHEET NO.
353	2010-052 DTR	WILL	210	16
STA. 117+91.12		TO STA. 175+00		
FED. ROAD DIST. NO.		ILLINOIS	FED. AID PROJECT	

CONTRACT NO. 60L33



**BENCHMARK DESCRIPTIONS**

- BM #200 ELEVATION 675.325  
CHISELED 'D' ON CURB @ P.C. OF CURB RETURN IN THE S.E. QUADRANT OF RTE. 30 AND ROBERTS. STA. 126+01, 30' RT.
- BM #201 ELEVATION 678.580  
SET RAILROAD SPIKE IN THE SOUTH FACE OF THE FIRST POWER POLE EAST OF AMERICAN PRIDE LANE ON THE NORTH SIDE OF RTE. 30. STA. 140+59, 3' LT.
- BM #202 ELEVATION 678.285  
SET RAILROAD SPIKE IN THE SOUTH FACE OF THE SECOND NEW POWER POLE WEST OF MARLEY ROAD ON THE NORTH SIDE OF RTE. 30. STA. 145+51, 17' LT.
- TBM #203 ELEVATION 686.649  
NAIL IN SOUTH FACE OF THE SECOND NEW POWER POLE EAST OF MARLEY ROAD ON THE NORTH SIDE OF RTE. 30. STA. 150+76, 20' LT.
- BM #204 ELEVATION 690.723  
CHISELED 'D' ON WEST CURB OF ENTRANCE TO CAR QUEST AUTO PARTS. STA. 155+18, 54' RT.
- TBM #205 ELEVATION 691.585  
NAIL IN THE SOUTH FACE OF THE FIRST POWER POLE WEST OF VIDEO MASTER ENTRANCE ON THE NORTH SIDE OF RTE. 30. STA. 160+72, 1' RT.
- BM #206 ELEVATION 690.831  
RAILROAD SPIKE IN SOUTH FACE OF POWER POLE BETWEEN VIDEO MASTER AND COLDWELL BANKER REALTOR ON THE NORTH SIDE OF RTE. 30. STA. 164+22, 1' LT.
- TBM #207 ELEVATION 683.869  
NAIL IN THE NORTH FACE OF THE FIRST POWER POLE WEST OF ANDERSEN ROAD ON THE SOUTH SIDE OF RTE. 30. STA. 168+58, 47' RT.
- BM #208 ELEVATION 685.542  
RAILROAD SPIKE IN THE NORTH FACE OF THE SECOND POWER POLE EAST OF ANDERSEN ROAD ON THE NORTH SIDE OF RTE. 30. STA. 173+50, 35' LT.

**U.S. RTE. 30 COORDINATE DATA**

POINT	NORTHING	EASTING
POT 117+91.12	1,765,171.91	1,087,604.96
POT 129+85.56	1,765,196.62	1,088,799.15
POT 143+28.64	1,765,251.19	1,090,141.12
POT 148+61.41	1,765,263.20	1,090,673.75
P.C. 165+77.23	1,765,301.96	1,092,389.14
P.T. 173+71.94	1,765,210.19	1,093,175.97

**MARLEY RD. COORDINATE DATA**

POINT	NORTHING	EASTING
POT 94+00.00	1,764,663.42	1,090,690.01
POT 100+00.02	1,765,263.20	1,090,673.75
POT 108+00.05	1,766,062.96	1,090,652.07

PROP. CURVE CLUS30-1  
 PI STA. = 169+77.15  
 $\Delta = 15^\circ 53' 35''$  (RT)  
 $D = 1^\circ 59' 59''$   
 $R = 2,865.00'$   
 $T = 399.92'$   
 $L = 794.71'$   
 $E = 27.78'$   
 $e = 0.0272$   
 $T.R. = 110.30'$   
 $S.E. RUN = 150.01'$   
 $P.C. STA = 165+77.23$   
 $P.T. STA = 173+71.94$



REVISIONS	
NAME	DATE

ILLINOIS DEPARTMENT OF TRANSPORTATION  
**ALIGNMENT & BENCHMARKS**  
 U.S. RTE. 30 (LINCOLN HIGHWAY)

SCALE : 1" = 100'  
 DATE : / /  
 DRAWN BY : BAE  
 CHECKED BY : GB