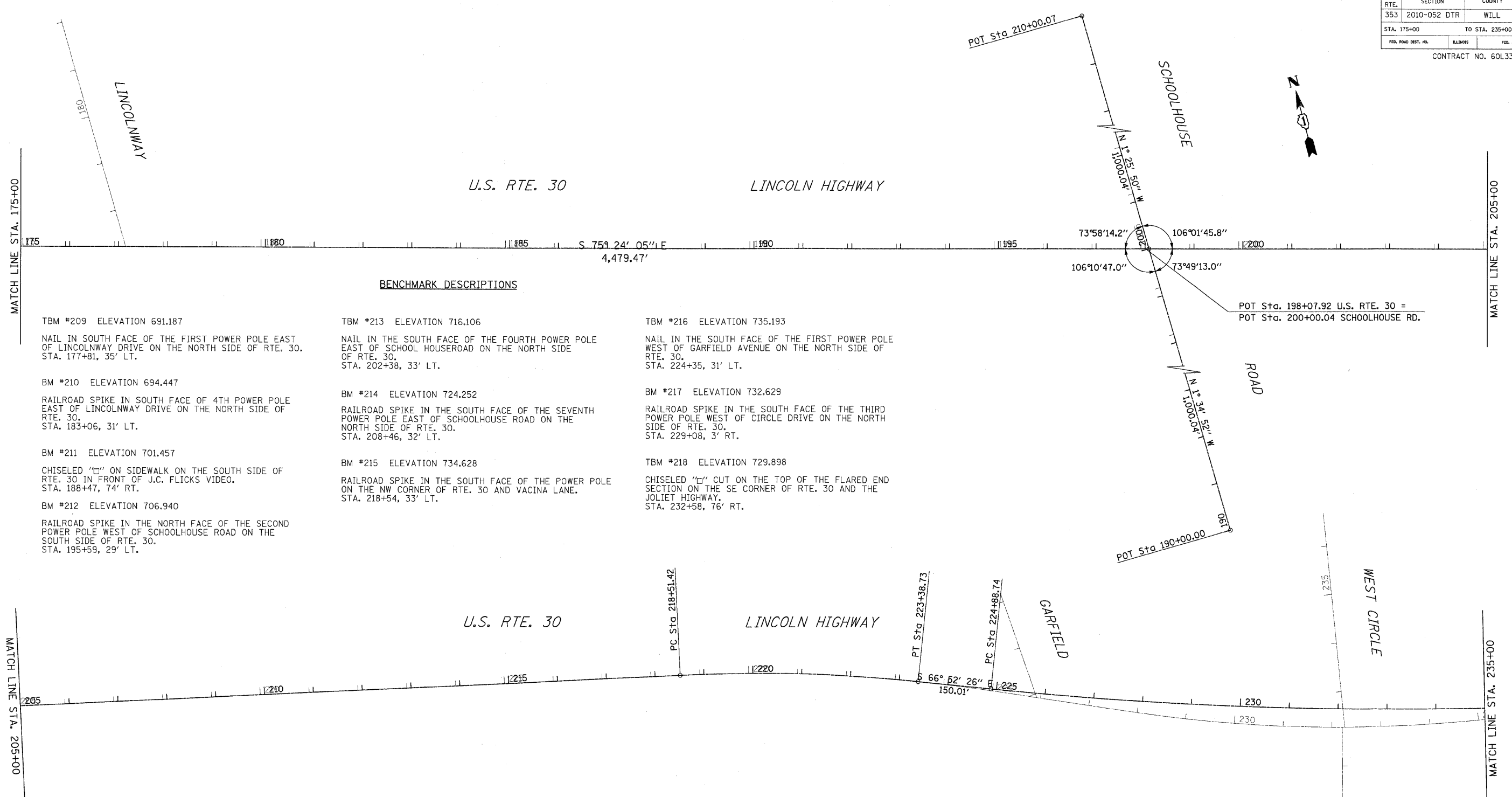


F.A.P. RTE.	SECTION	COUNTY	TOTAL SHEETS	SHEET NO.
353	2010-052 DTR	WILL	210	17
STA. 175+00		TO STA. 235+00		
FED. ROAD DIST. NO.	ILLINOIS	FED. AID PROJECT		

CONTRACT NO. 60L33



**BENCHMARK DESCRIPTIONS**

- |  |   |   |
|--|---|---|
| <p>TBM #209 ELEVATION 691.187<br/>NAIL IN SOUTH FACE OF THE FIRST POWER POLE EAST OF LINCOLNWAY DRIVE ON THE NORTH SIDE OF RTE. 30. STA. 177+81, 35' LT.</p> <p>BM #210 ELEVATION 694.447<br/>RAILROAD SPIKE IN SOUTH FACE OF 4TH POWER POLE EAST OF LINCOLNWAY DRIVE ON THE NORTH SIDE OF RTE. 30. STA. 183+06, 31' LT.</p> <p>BM #211 ELEVATION 701.457<br/>CHISELED "C" ON SIDEWALK ON THE SOUTH SIDE OF RTE. 30 IN FRONT OF J.C. FLICKS VIDEO. STA. 188+47, 74' RT.</p> <p>BM #212 ELEVATION 706.940<br/>RAILROAD SPIKE IN THE NORTH FACE OF THE SECOND POWER POLE WEST OF SCHOOLHOUSE ROAD ON THE SOUTH SIDE OF RTE. 30. STA. 195+59, 29' LT.</p> | <p>TBM #213 ELEVATION 716.106<br/>NAIL IN THE SOUTH FACE OF THE FOURTH POWER POLE EAST OF SCHOOL HOUSEROAD ON THE NORTH SIDE OF RTE. 30. STA. 202+38, 33' LT.</p> <p>BM #214 ELEVATION 724.252<br/>RAILROAD SPIKE IN THE SOUTH FACE OF THE SEVENTH POWER POLE EAST OF SCHOOLHOUSE ROAD ON THE NORTH SIDE OF RTE. 30. STA. 208+46, 32' LT.</p> <p>BM #215 ELEVATION 734.628<br/>RAILROAD SPIKE IN THE SOUTH FACE OF THE POWER POLE ON THE NW CORNER OF RTE. 30 AND VACINA LANE. STA. 218+54, 33' LT.</p> | <p>TBM #216 ELEVATION 735.193<br/>NAIL IN THE SOUTH FACE OF THE FIRST POWER POLE WEST OF GARFIELD AVENUE ON THE NORTH SIDE OF RTE. 30. STA. 224+35, 31' LT.</p> <p>BM #217 ELEVATION 732.629<br/>RAILROAD SPIKE IN THE SOUTH FACE OF THE THIRD POWER POLE WEST OF CIRCLE DRIVE ON THE NORTH SIDE OF RTE. 30. STA. 229+08, 3' RT.</p> <p>TBM #218 ELEVATION 729.898<br/>CHISELED "C" CUT ON THE TOP OF THE FLARED END SECTION ON THE SE CORNER OF RTE. 30 AND THE JOLIET HIGHWAY. STA. 232+58, 76' RT.</p> |
|--|---|---|

**U.S. RTE. 30 COORDINATE DATA**

POINT	NORTHING	EASTING
POT 198+07.92	1,764,596.21	1,095,533.30
P.C. 218+51.42	1,764,081.15	1,097,510.82
P.T. 223+38.73	1,763,923.75	1,097,971.54
P.C. 224+88.74	1,763,864.83	1,098,109.50

**SCHOOLHOUSE RD. COORDINATE DATA**

POINT	NORTHING	EASTING
POT 190+00.00	1,763,596.55	1,095,560.89
POT 200+00.04	1,764,596.21	1,095,533.30
POT 210+00.07	1,765,595.93	1,095,508.33

**PROP. CURVE CLUS30-2**  
 PI STA. = 220+95.53  
 $\Delta = 8^\circ 31' 39''$  (RT)  
 $D = 1^\circ 45' 00''$   
 $R = 3,274.22'$   
 $T = 244.11'$   
 $L = 487.32'$   
 $E = 9.09'$   
 $e = 0.0256$   
 $T.R. = 117.19'$   
 $S.E. RUN = 150.01'$   
 $P.C. STA = 218+51.42$   
 $P.T. STA = 223+38.73$

**PROP. CURVE CLUS30-3**  
 PI STA. = 233+09.46  
 $\Delta = 11^\circ 25' 52''$  (LT)  
 $D = 0^\circ 41' 55''$   
 $R = 8,200.00'$   
 $T = 820.72'$   
 $L = 1,635.98'$   
 $E = 40.97'$   
 $e = 0.0256$   
 $T.R. = 117.19'$   
 $S.E. RUN = 150.01'$   
 $P.C. STA = 224+88.74$   
 $P.T. STA = 241+24.73$

**REVISIONS**

NAME	DATE

ILLINOIS DEPARTMENT OF TRANSPORTATION  
**ALIGNMENT & BENCHMARKS**  
 U.S. RTE. 30 (LINCOLN HIGHWAY)

SCALE : 1" = 100'  
 DATE : / /

DRAWN BY : BAE  
 CHECKED BY : GB