

F.A.P. RTE.	SECTION	COUNTY	TOTAL SHEETS	SHEET NO.
353	2010-052 DTR	WILL	210	27
STA. 515+00		TO STA. 543+00		
FED. ROAD DIST. NO. 1		ILLINOIS	FED. AID PROJECT	



**HILLSIDE ROAD ALIGNMENT**

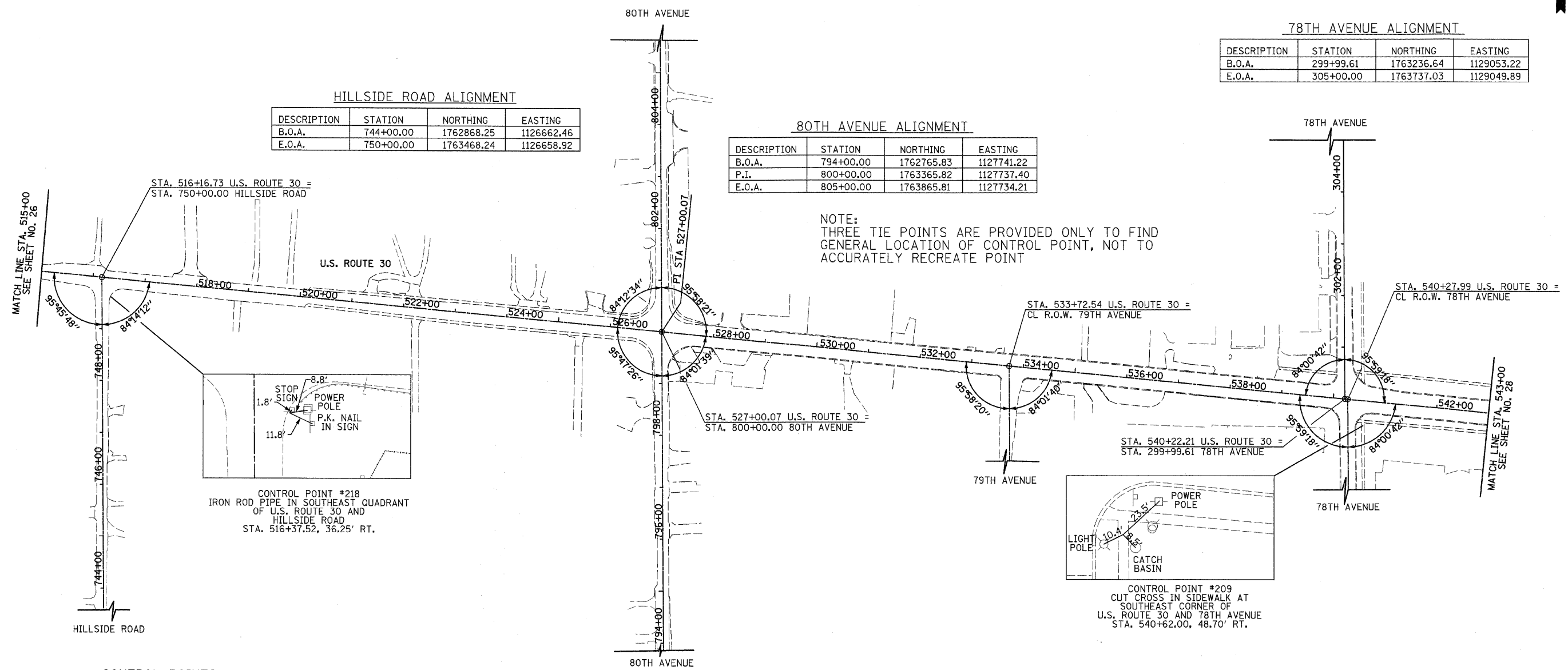
DESCRIPTION	STATION	NORTHING	EASTING
B.O.A.	744+00.00	1762868.25	1126662.46
E.O.A.	750+00.00	1763468.24	1126658.92

**80TH AVENUE ALIGNMENT**

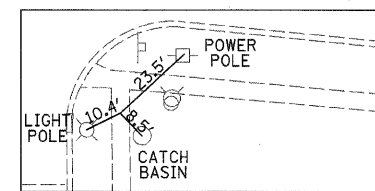
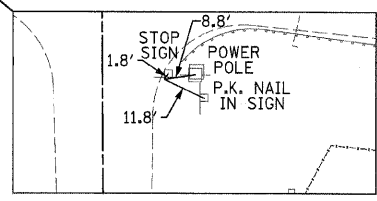
DESCRIPTION	STATION	NORTHING	EASTING
B.O.A.	794+00.00	1762765.83	1127741.22
P.I.	800+00.00	1763365.82	1127737.40
E.O.A.	805+00.00	1763865.81	1127734.21

**78TH AVENUE ALIGNMENT**

DESCRIPTION	STATION	NORTHING	EASTING
B.O.A.	299+99.61	1763236.64	1129053.22
E.O.A.	305+00.00	1763737.03	1129049.89



NOTE:  
THREE TIE POINTS ARE PROVIDED ONLY TO FIND  
GENERAL LOCATION OF CONTROL POINT, NOT TO  
ACCURATELY RECREATE POINT



**CONTROL POINTS**

C.P. #	NORTHING	EASTING	STATION	OFFSET	ELEVATION
218	1763430.19	1126676.18	516+37.52	36.25' RT.	698.19
209	1763184.29	1129088.06	540+62.00	48.70' RT.	731.83

NOTES:  
EXISTING ROAD CONFIGURATION SHOWN  
B.O.A. = BEGINNING OF ALIGNMENT  
P.C. = POINT OF CURVATURE  
P.R.C. = POINT OF REVERSE CURVATURE  
P.T. = POINT OF TANGENT  
P.I. = POINT OF INTERSECTION  
E.O.A. = END OF ALIGNMENT  
B.M. = BENCHMARK  
C.P. = CONTROL POINT

REVISIONS	
NAME	DATE

ILLINOIS DEPARTMENT OF TRANSPORTATION  
**U.S. ROUTE 30  
ALIGNMENT, TIES AND BENCHMARKS**

STATION 515+00 TO STATION 543+00

SCALE IN FEET

DATE 5/5/2010

DRAWN BY JRR  
CHECKED BY JRV