

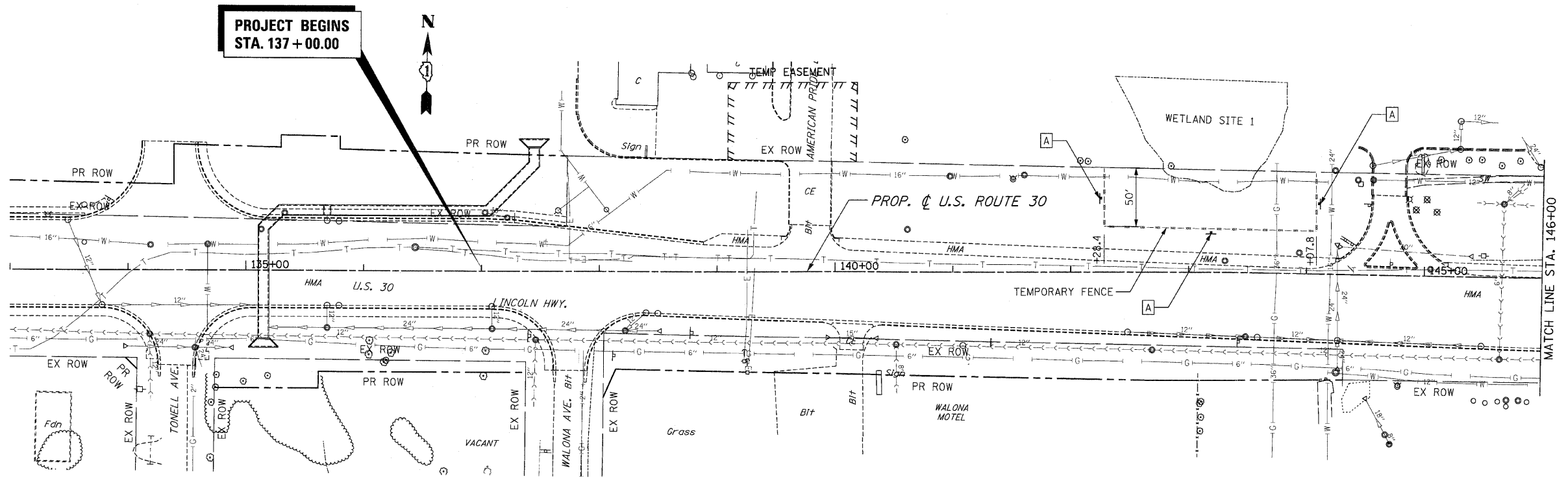
F.A.P. RTE.	SECTION	COUNTY	TOTAL SHEETS	SHEET NO.
353	2010-052 DTR	WILL	210	30
STA. 118+00		TO STA. 146+00		
FED. ROAD DIST. NO.	ILLINOIS	FED. AID PROJECT		
CONTRACT NO. 60L33				

NOTES:

1. THE STATION AND OFFSETS OF TREES BEING PAID FOR REMOVAL ARE LOCATED IN THE SCHEDULE OF QUANTITIES. ALL STATION AND OFFSETS ARE GIVEN TO THE PROPOSED US RTE 30 CENTERLINE.
2. TREES LESS THAN 6 INCHES ARE TO BE REMOVED AS CLEARING (ARTICLE 201.01 OF THE STANDARD SPECIFICATIONS). DIAMETERS HAVE NOT BEEN SHOWN ON THE PLANS FOR THESE TREES.
3. SEE PAGE 43 FOR TEMPORARY INFORMATION SIGNING DETAIL.

REMOVAL LEGEND

- ⊗ 10" TREE REMOVAL, DIAMETER
- TEMPORARY FENCE



REVISIONS		ILLINOIS DEPARTMENT OF TRANSPORTATION REMOVAL PLANS U.S. RTE. 30 (LINCOLN HIGHWAY) STA. 118+00 TO STA. 146+00 SCALE : 1" = 50' DRAWN BY : CAT DATE : 05/03/10 CHECKED BY : GB
NAME	DATE	