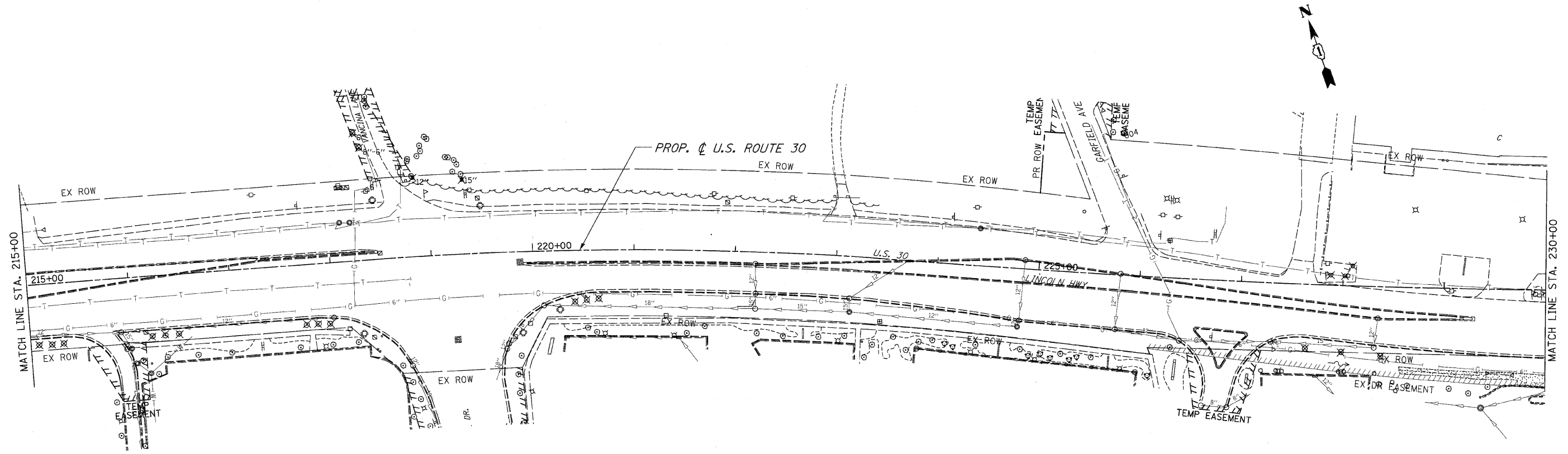


F.A.P. RTE.	SECTION	COUNTY	TOTAL SHEETS	SHEET NO.
353	2010-052 DTR	WILL	210	33
STA. 202+00		TO STA. 230+00		
FED. ROAD DIST. NO.	ILLINOIS	FED. AID PROJECT		
CONTRACT NO. 60L33				



- NOTES:
1. FOR REMOVAL NOTES SEE FIRST PAGE REMOVAL PLANS.
  2. FOR REMOVAL LEGEND SEE FIRST PAGE REMOVAL PLANS.

REVISIONS	
NAME	DATE

ILLINOIS DEPARTMENT OF TRANSPORTATION  
**REMOVAL PLANS**  
 U.S. RTE. 30 (LINCOLN HIGHWAY)  
 STA. 202+00 TO STA. 230+00  
 SCALE : 1" = 50' DRAWN BY : CAT  
 DATE : 05/03/10 CHECKED BY : GB