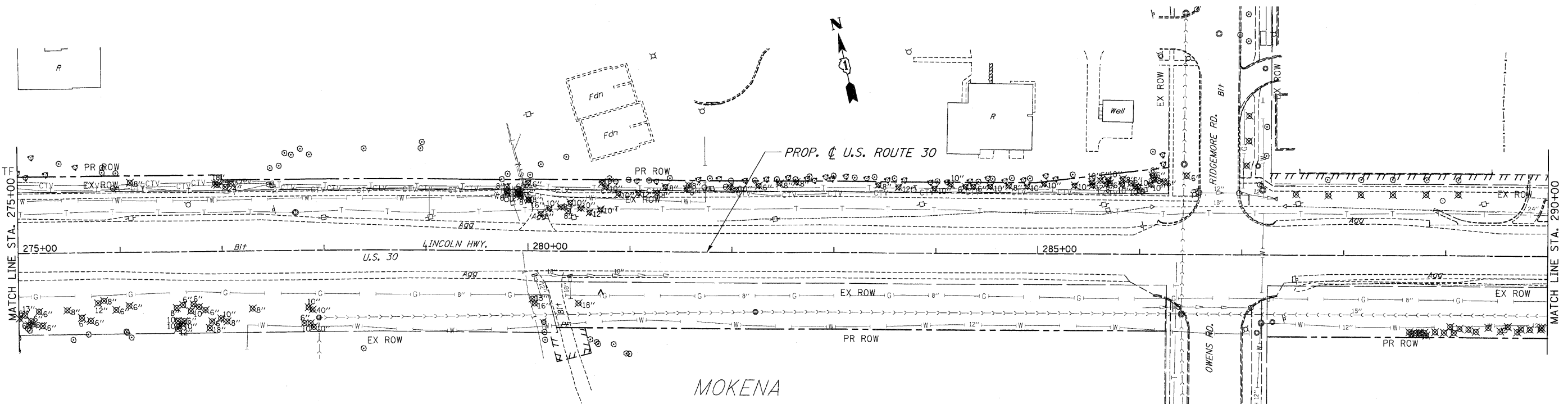
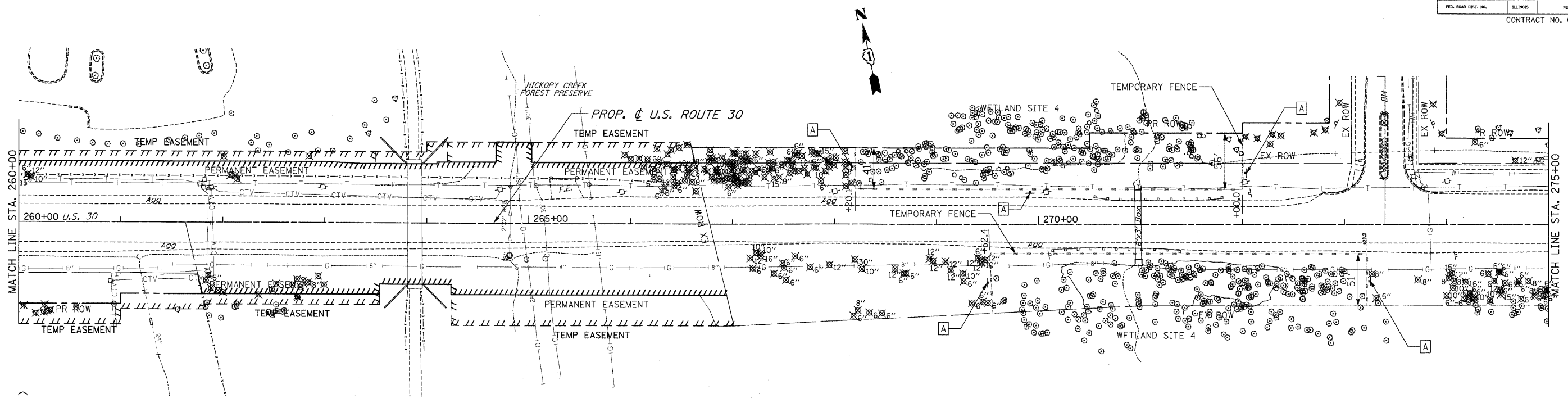


F.A.P. RTE.	SECTION	COUNTY	TOTAL SHEETS	SHEET NO.
353	2010-052 DTR	WILL	210	35
STA. 260+00		TO STA. 290+00		
FED. ROAD DIST. NO.	ILLINOIS	FED. AID PROJECT		
CONTRACT NO. 60L33				



- NOTES:
- FOR REMOVAL NOTES SEE FIRST PAGE REMOVAL PLANS.
 - FOR REMOVAL LEGEND SEE FIRST PAGE REMOVAL PLANS.

REVISIONS		ILLINOIS DEPARTMENT OF TRANSPORTATION	
NAME	DATE	REMOVAL PLANS	
		U.S. RTE. 30 (LINCOLN HIGHWAY)	
		STA. 260+00 TO STA. 290+00	
		SCALE : 1" = 50'	DRAWN BY : CAT
		DATE : 05/03/10	CHECKED BY : GB