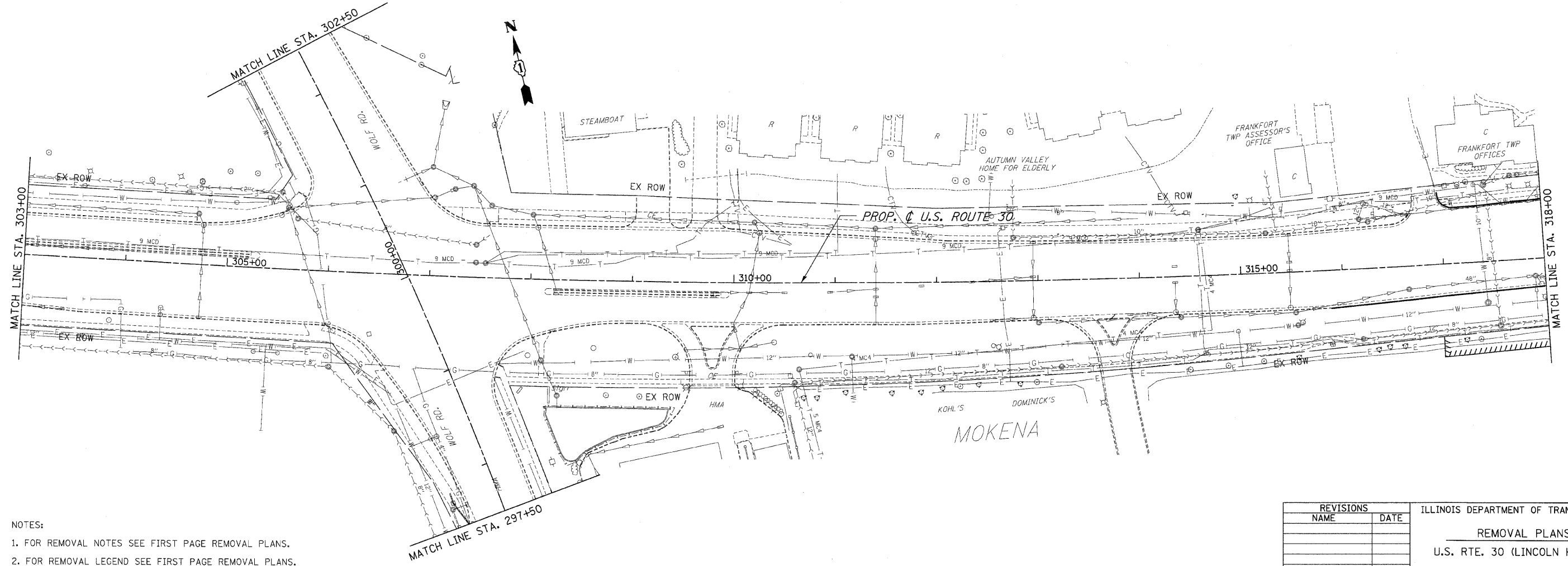
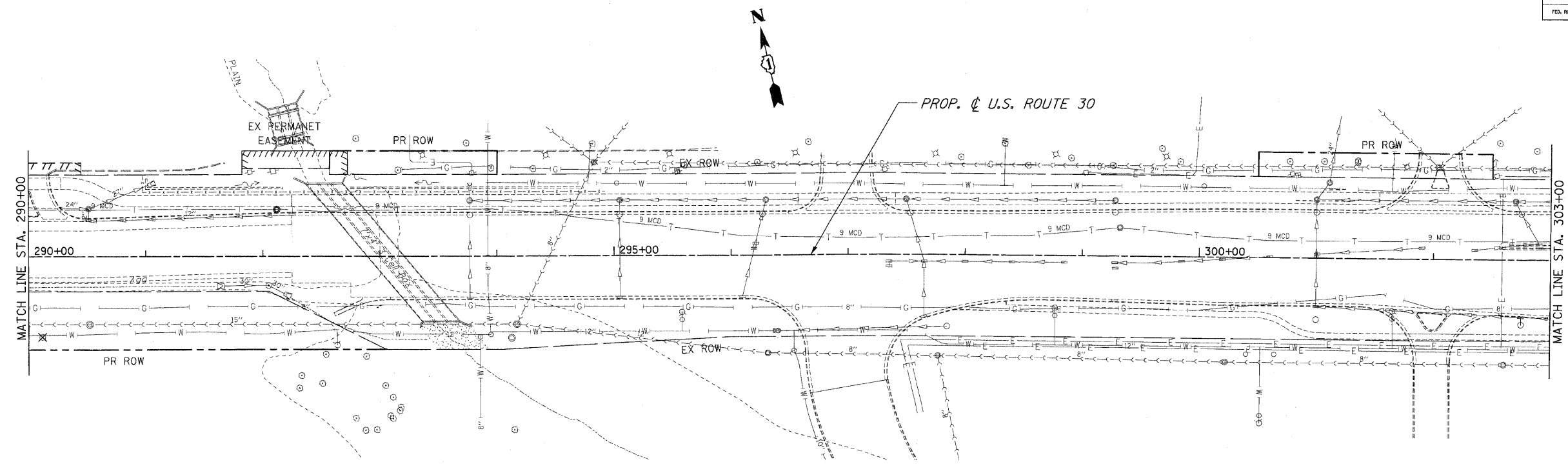


| | | | | |
|---------------------|--------------|------------------|--------------|-----------|
| F.A.P. RTE. | SECTION | COUNTY | TOTAL SHEETS | SHEET NO. |
| 353 | 2010-052 DTR | WILL | 210 | 36 |
| STA. 290+00 | | TO STA. 318+00 | | |
| FED. ROAD DIST. NO. | ILLINOIS | FED. AID PROJECT | | |
| CONTRACT NO. 60L33 | | | | |



- NOTES:
1. FOR REMOVAL NOTES SEE FIRST PAGE REMOVAL PLANS.
 2. FOR REMOVAL LEGEND SEE FIRST PAGE REMOVAL PLANS.

| REVISIONS | | ILLINOIS DEPARTMENT OF TRANSPORTATION REMOVAL PLANS U.S. RTE. 30 (LINCOLN HIGHWAY) STA. 290+00 TO STA. 318+00 SCALE : 1" = 50' DRAWN BY : CAT DATE : 05/03/10 CHECKED BY : GB |
|-----------|------|--|
| NAME | DATE | |
| | | |
| | | |
| | | |
| | | |
| | | |
| | | |
| | | |
| | | |
| | | |
| | | |