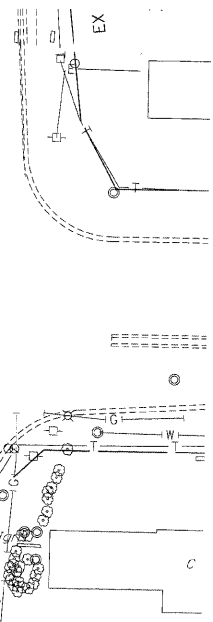
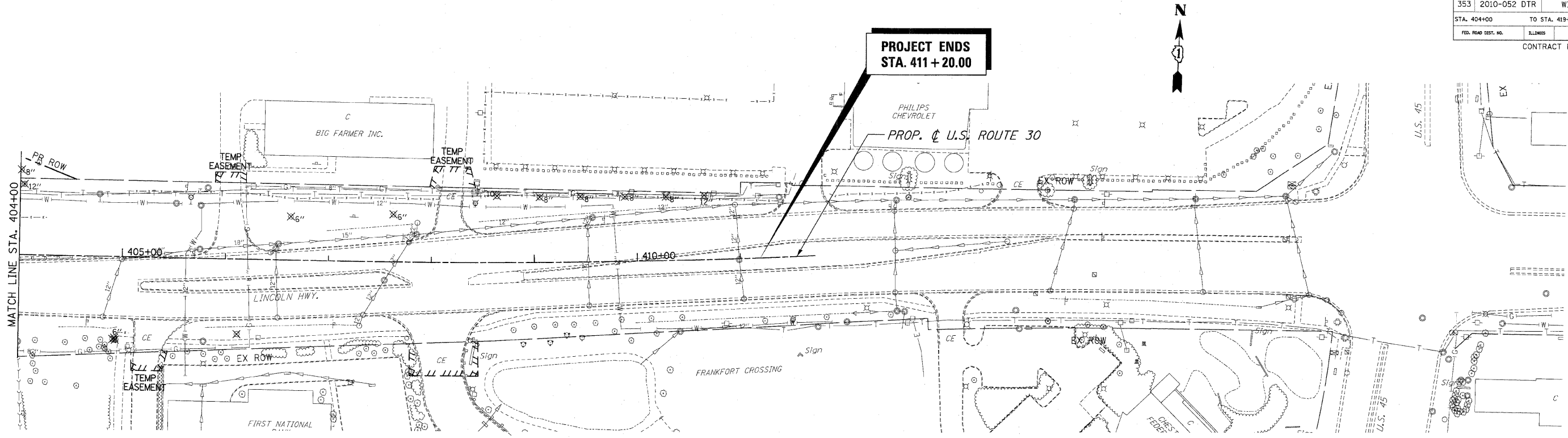


F.A.P. RTE.	SECTION	COUNTY	TOTAL SHEETS	SHEET NO.
353	2010-052 DTR	WILL	210	40
STA. 404+00		TO STA. 419+00		
FED. ROAD DIST. NO.	ILLINOIS	FED. AID PROJECT		
CONTRACT NO. 60L33				



NOTES:

1. FOR REMOVAL NOTES SEE FIRST PAGE REMOVAL PLANS.
2. FOR REMOVAL LEGEND SEE FIRST PAGE REMOVAL PLANS.

REVISIONS	
NAME	DATE

ILLINOIS DEPARTMENT OF TRANSPORTATION
REMOVAL PLANS
 U.S. RTE. 30 (LINCOLN HIGHWAY)
 STA. 404+00 TO STA. 419+00
 SCALE : 1" = 50' DRAWN BY : CAT
 DATE : 05/03/10 CHECKED BY : GB