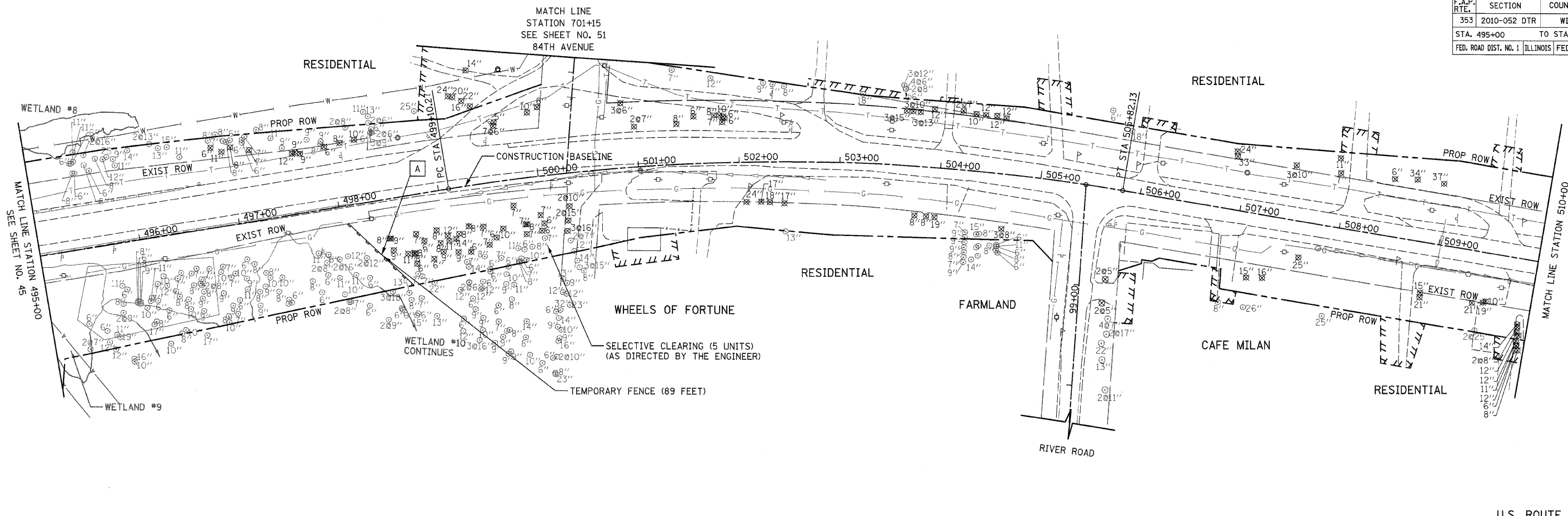
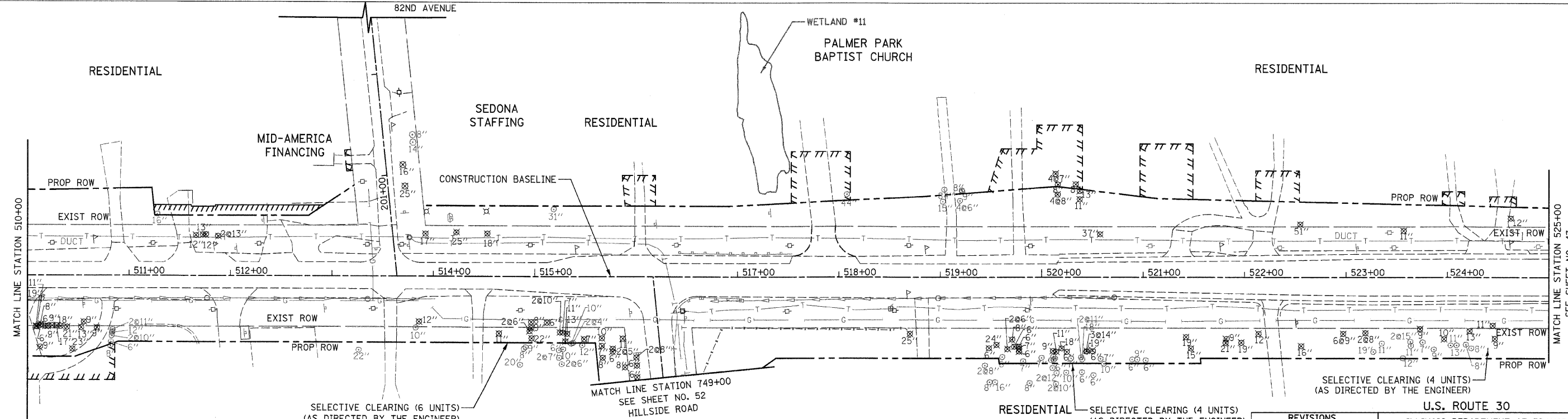


F.A.P. RTE.	SECTION	COUNTY	TOTAL SHEETS	SHEET NO.
353	2010-052 DTR	WILL	210	46
STA. 495+00		TO STA. 525+00		
FED. ROAD DIST. NO. 1 ILLINOIS FED. AID PROJECT				



U.S. ROUTE 30



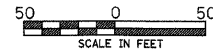
SELECTIVE CLEARING (4 UNITS)
(AS DIRECTED BY THE ENGINEER)

U.S. ROUTE 30

REVISIONS	
NAME	DATE

ILLINOIS DEPARTMENT OF TRANSPORTATION
U.S. ROUTE 30
TREE REMOVAL PLANS

STATION 495+00 TO STATION 525+00



SCALE IN FEET
DATE 5/5/2010
DRAWN BY DJK
CHECKED BY JRJ