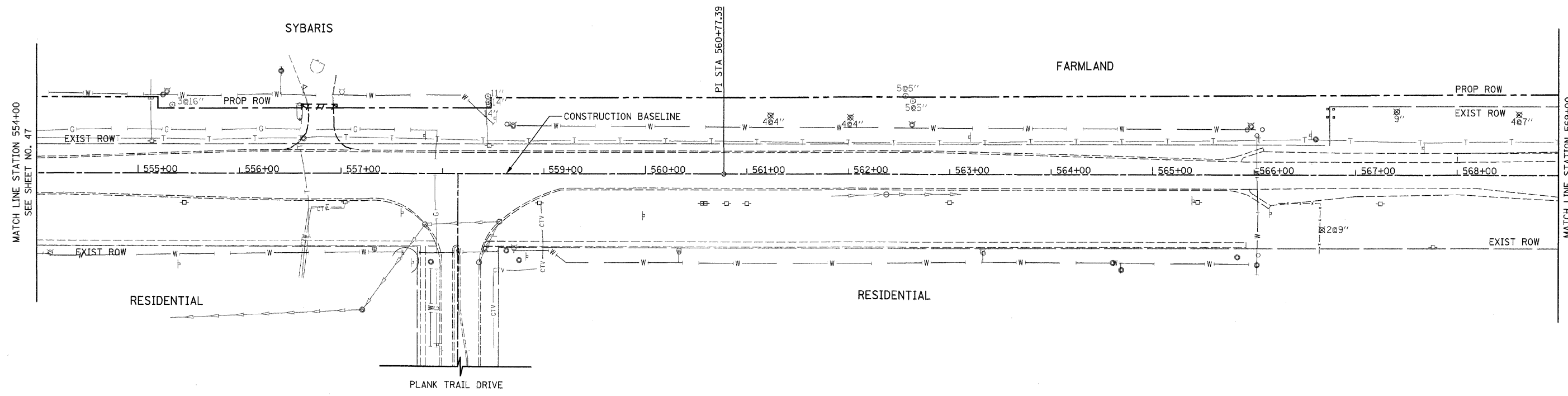
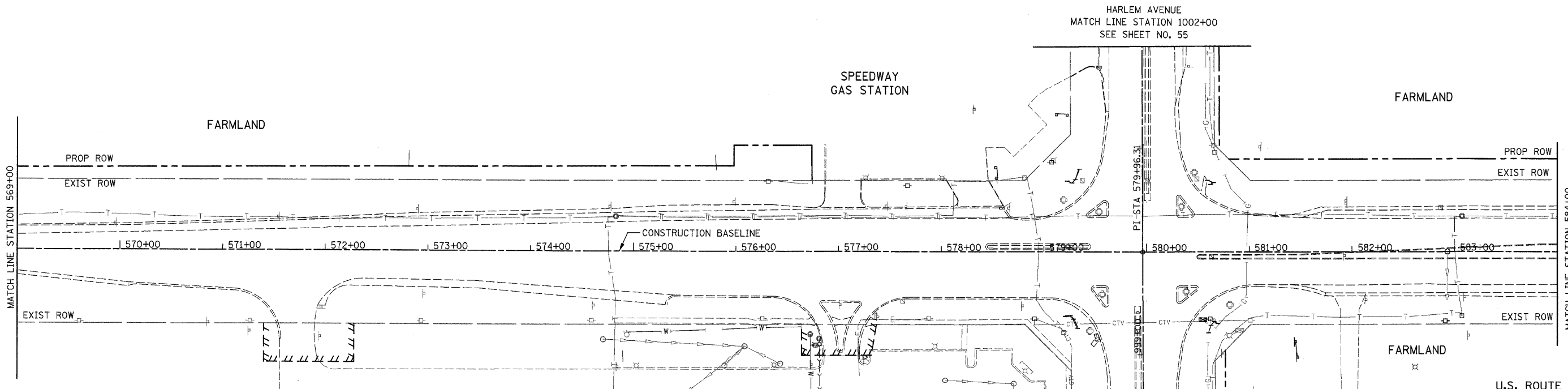


CONTRACT NO. 60L33				
F.A.P. RTE.	SECTION	COUNTY	TOTAL SHEETS	SHEET NO.
353	2010-052 DTR	WILL	210	48
STA. 554+00		TO STA. 584+00		
FED. ROAD DIST. NO. 1 ILLINOIS FED. AID PROJECT				



U.S. ROUTE 30



U.S. ROUTE 30

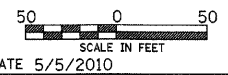
MCDONALDS WALGREENS

HARLEM AVENUE
MATCH LINE STATION 998+00
SEE SHEET NO. 54

REVISIONS	
NAME	DATE

ILLINOIS DEPARTMENT OF TRANSPORTATION
**U.S. ROUTE 30
TREE REMOVAL PLANS**

STATION 554+00 TO STATION 584+00



DRAWN BY DJK
CHECKED BY JRV

DATE 5/5/2010