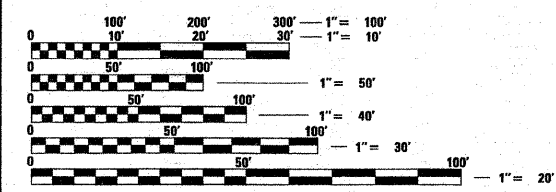
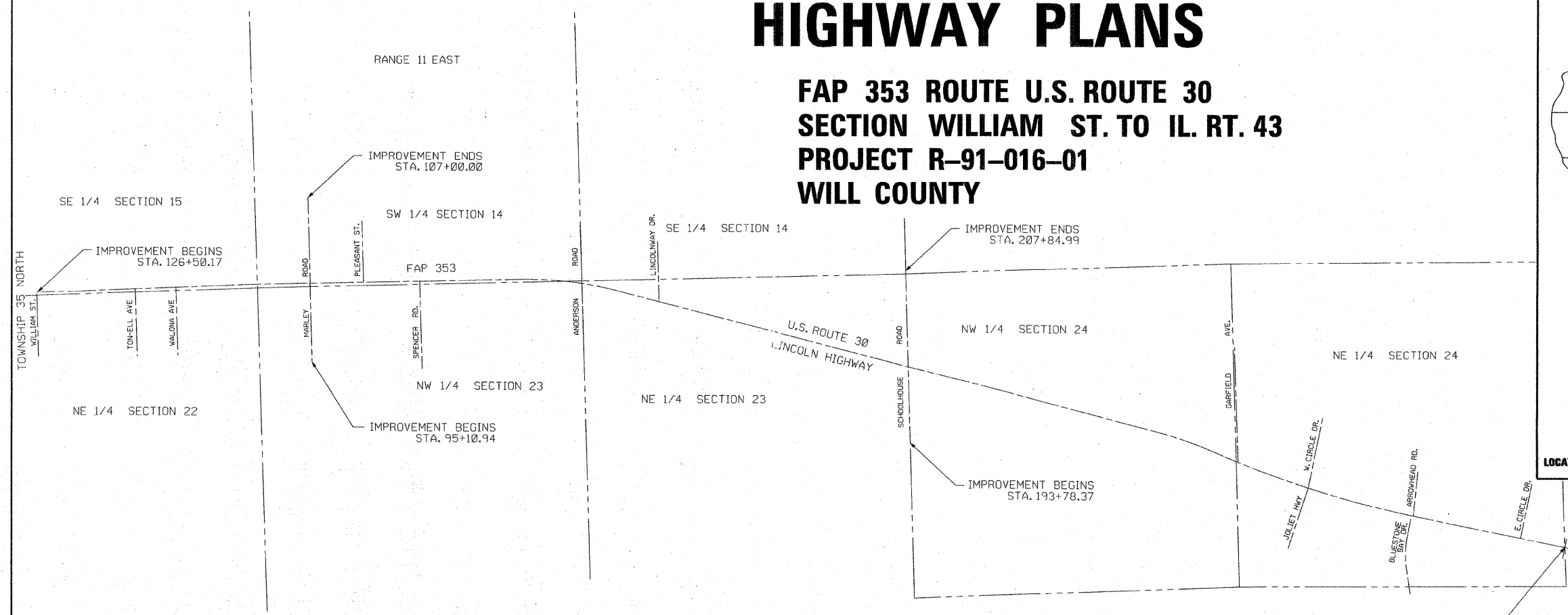
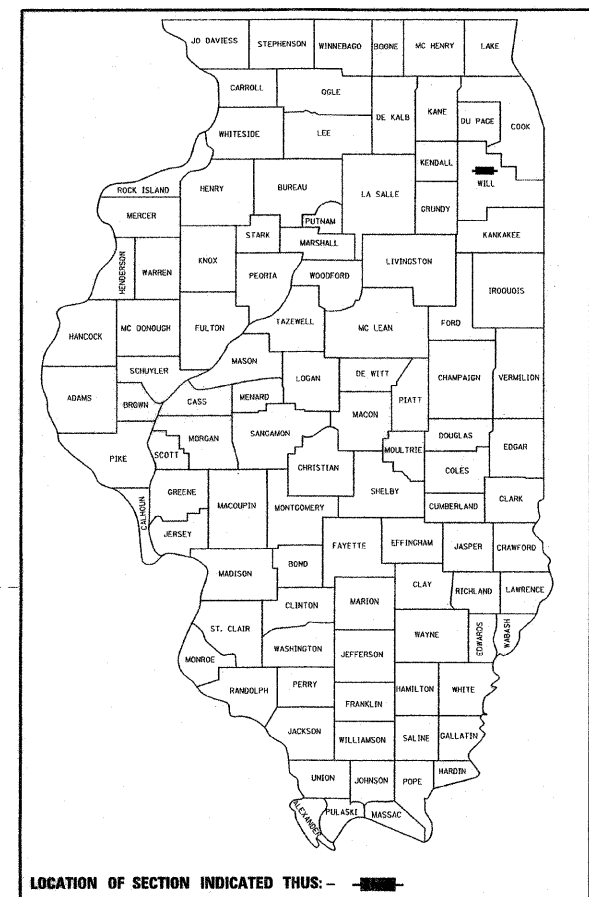


F.A. RTE.	SECTION	COUNTY	TOTAL SHEETS	SHEET NO.
				1

STATE OF ILLINOIS
 DEPARTMENT OF TRANSPORTATION
 DIVISION OF HIGHWAYS

**PROPOSED
 HIGHWAY PLANS**

FAP 353 ROUTE U.S. ROUTE 30
 SECTION WILLIAM ST. TO IL. RT. 43
 PROJECT R-91-016-01
 WILL COUNTY



FULL SIZE PLANS HAVE BEEN PREPARED USING STANDARD ENGINEERING SCALES. REDUCED SIZED PLANS WILL NOT CONFORM TO STANDARD SCALES. IN MAKING MEASUREMENTS ON REDUCED PLANS, THE ABOVE SCALES MAY BE USED.

J.U.L.I.E.
 JOINT UTILITY LOCATION INFORMATION FOR EXCAVATION
 1-800-892-0123

CONTRACT NO.

PROJECT LENGTH = 12695.80 L.F. = 2.40 MILES FAP 353 (U.S. ROUTE 30)
 1189.06 L.F. = 0.23 MILES MARLEY ROAD
 1406.62 L.F. = 0.27 MILES SCHOOLHOUSE ROAD

IMPROVEMENT ENDS
 STA. 253+45.97

STATE OF ILLINOIS
 DEPARTMENT OF TRANSPORTATION
 DIVISION OF HIGHWAYS

SUBMITTED _____ 20 _____

DEPUTY DIRECTOR OF HIGHWAYS, REGION ENGINEER
 _____ 20 _____

ENGINEER OF DESIGN AND ENVIRONMENT
 _____ 20 _____

DIRECTOR OF HIGHWAYS, CHIEF ENGINEER

**PRINTED BY THE AUTHORITY
 OF THE STATE OF ILLINOIS**

RECEIVED
 AUG 20 2009
 PLATS & LEGALS