

PART OF THE NE 1/4 OF SECTION 24, T.35N., R.11E., OF THE 3rd. P.M. WILL COUNTY, ILLINOIS
PART OF THE NW 1/4 OF SECTION 24, T.35N., R.11E., OF THE 3rd. P.M. WILL COUNTY, ILLINOIS

PARCEL NO.	OWNER	TOTAL HOLDING ACRES	PART TAKEN ACRES	REMAINDER ACRES	PREVIOUSLY DED. ACRES	EASEMENT ACRES	EASEMENT PURPOSE	PERMANENT ID. NO.	PROPERTY ACQUIRED BY
1FW0049	FIRST MIDWEST TRUST COMPANY, NA TRUST NO. 4667	6.026	N/A	6.026	N/A	0.075	CONSTRUCTION	08-13-300-010 08-24-100-006 08-24-100-024	
1FW0050	NLI, LLC	6.402	0.049	6.353	N/A	0.005 215 S.F.	CONSTRUCTION	08-24-100-012 08-24-100-030	
1FW0051	BRUCE A. & KAREN A. BURNS	0.912	N/A	0.912	N/A	0.007 285 S.F.	CONSTRUCTION	08-24-200-019	

PROP. CURVE NO. 2
 PI STA. = 220+95.51
 Δ = 8° 31' 38" (RT)
 D = 1° 45' 00"
 R = 3,274.22'
 T = 244.10'
 L = 487.30'
 P.C. STA. = 218+51.41
 P.T. STA. = 223+38.71

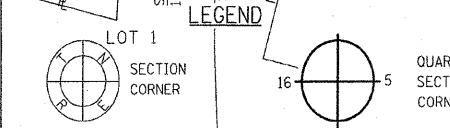
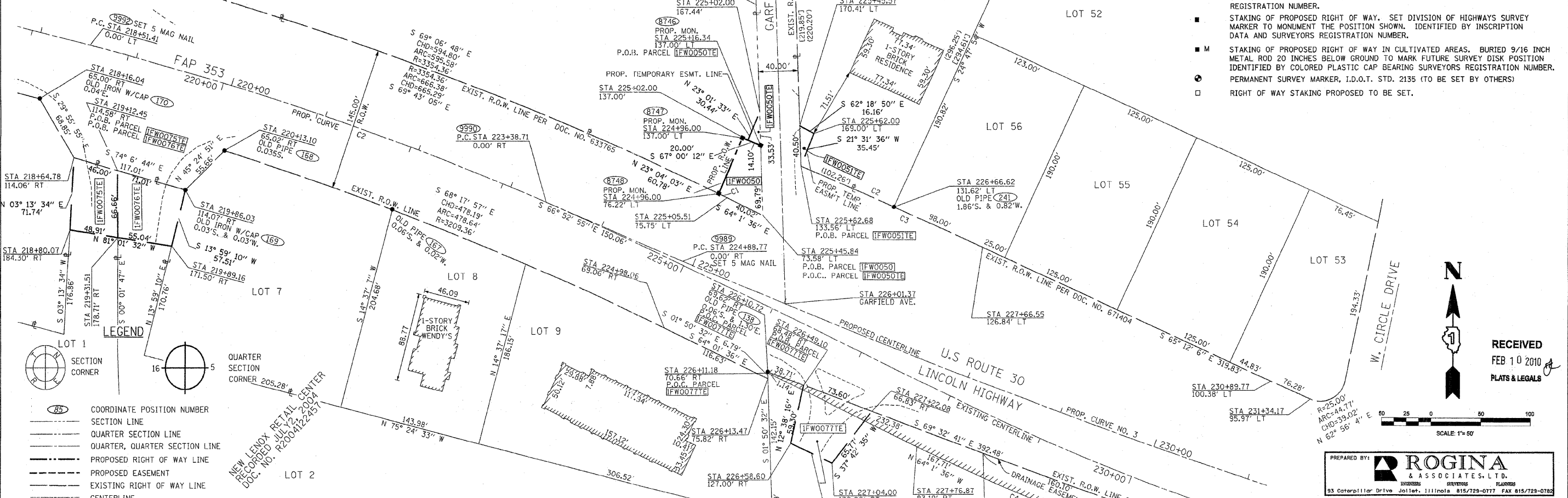
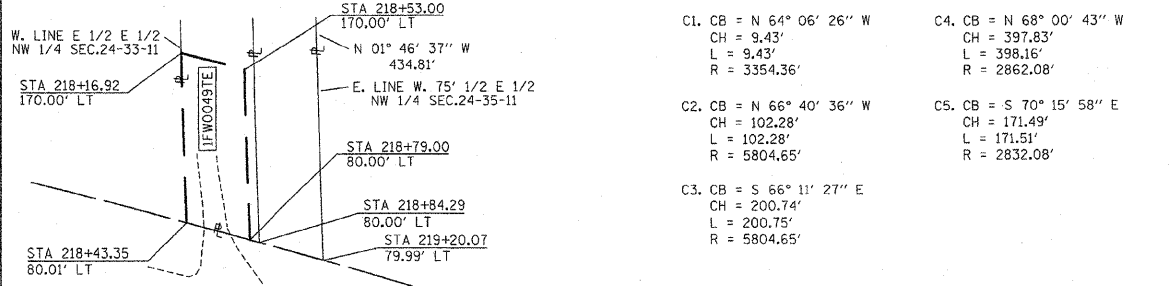
EXIST. CURVE NO. 3
 Δ = 14°15'51"
 D = 02°02'41"
 T = 350.61'
 L = 697.59'
 R = 2802.06'

PROP. CURVE NO. 3
 PI = 233+09.46
 Δ = 11° 24' 32"
 D = 0° 41' 51"
 R = 8215.79'
 T = 620.69'
 L = 1635.95'
 P.C. STA. = 224+88.77
 P.T. STA. = 241+24.72

EXIST. CURVE NO. 2
 Δ = 11° 22' 57"
 D = 1° 44' 59"
 R = 3,274.36'
 T = 326.32'
 L = 650.49'
 P.C. STA. = 218+5501.94
 P.T. STA. = 218+24.72

STATE OF ILLINOIS)
) SS
 COUNTY OF WILL)
 THIS IS TO CERTIFY THAT I, ROBERT A. ROGINA, AN ILLINOIS PROFESSIONAL LAND SURVEYOR, HAVE SURVEYED THE PLAT OF HIGHWAYS SHOWN HERE IN SECTION 24, TOWNSHIP 35 NORTH, AND RANGE 11 EAST OF THE THIRD PRINCIPAL MERIDIAN, WILL COUNTY; THAT THE SURVEY IS TRUE AND COMPLETE AS SHOWN TO THE BEST OF MY KNOWLEDGE AND BELIEF; THAT THE PLAT CORRECTLY REPRESENTS SAID SURVEY, THAT ALL MONUMENTS FOUND AND ESTABLISHED ARE OF PERMANENT QUALITY AND OCCUPY THE POSITIONS SHOWN THEREON AND THAT THE MONUMENTS ARE SUFFICIENT TO ENABLE THE SURVEY TO BE RETRACED, MADE FOR THE DEPARTMENT OF TRANSPORTATION, STATE OF ILLINOIS.
 THIS PROFESSIONAL SERVICE CONFORMS TO THE CURRENT MINIMUM ILLINOIS STANDARDS FOR A BOUNDARY SURVEY.
 DATED AT JOLIET, ILLINOIS THIS 18th DAY OF AUGUST, 2008 A.D.

SEE SHEET 21A FOR TOTAL HOLDINGS OF PARCELS 1FW0050



SEE SHEET 31A FOR TOTAL HOLDINGS OF PARCELS 1FW0075, 1FW0076 & 1FW0077

PARCEL NO.	OWNER	TOTAL HOLDING ACRES	PART TAKEN ACRES	REMAINDER ACRES	PREVIOUSLY DED. ACRES	EASEMENT ACRES	EASEMENT PURPOSE	PERMANENT ID. NO.	PROPERTY ACQUIRED BY
1FW0075	TARGET CORP.	12.799	N/A	12.799	N/A	0.074	CONSTRUCTION	08-24-106-017	
1FW0076	LOWE'S HOME CENTERS INC.	13.259	N/A	13.259	N/A	0.088	CONSTRUCTION	08-24-106-019	
1FW0077	BLUE STONE COMMONS LLC	1.501	N/A	1.501	N/A	0.084	CONSTRUCTION	08-24-211-005	

REVISION	DATE	DESCRIPTION
	07/22/08	IDOT REVIEW
	08/11/08	IDOT REVIEW
	02/04/10	IDOT REVIEW

ILLINOIS DEPT. OF TRANSPORTATION
 PLAT OF HIGHWAYS
 ROUTE FAP 353 U.S. ROUTE 30
 SECTION WILLIAM ST. TO IL. 43
 COUNTY WILL
 JOB# R-91-016-01 PROJECT#
 SEC 24 T 35N, R 11E OF 3rd P.M.
 STA 218+00.00 TO STA 231+00.00
 DRAWN M.MILTON CHECKED J.KELLA
 SCALE: 1"=50' SHEET NO. 10A OF 31A

DATE = 2/4/2010
 FILE NAME = Y:\URB\2312315\Design\Shores\Sheet_10A.dwg
 PLOT SCALE = 1/50
 USER = blueflr

RECEIVED
 FEB 10 2010
 PLATS & LEGALS

PREPARED BY:
ROGINA & ASSOCIATES, L.T.D.
 53 Caterpillar Drive Joliet, Illinois 61572-0117 FAX 815/728-0762