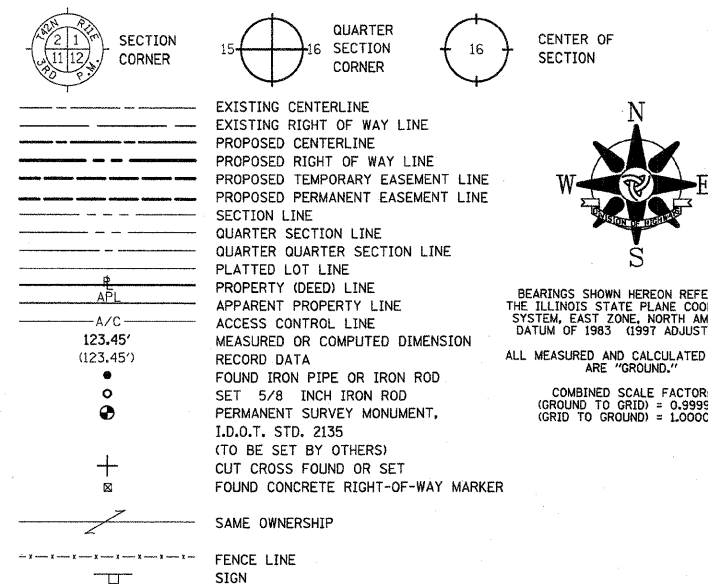


PART OF SECTION 24, T35N, R12E, OF THE 3RD PM, WILL COUNTY, ILLINOIS

LEGEND



527+40.92 / 90.00' LT. 20000	527+57.00 / 75.00' LT. 20001	527+59.96 / 92.00' RT. 20046	528+21.00 / 49.84' RT. 20045	529+42.46 / 75.00' LT. 20002	529+43.50 / 65.00' LT. 20003
529+46.78 / 49.67' RT. 20044	529+48.00 / 65.00' RT. 20043	529+57.14 / 65.43' RT. 21540	530+52.16 / 69.93' RT. 21541	531+38.26 / 74.00' RT. 20042	531+43.45 / 65.48' LT. 21544
531+47.10 / 73.56' RT. 21542	532+65.70 / 65.77' LT. 21545	533+40.00 / 64.00' RT. 20041	533+48.36 / 86.00' RT. 20040	533+64.74 / 66.00' LT. 20004	534+13.88 / 78.00' RT. 20039
534+38.00 / 64.00' RT. 20038	534+65.12 / 71.00' LT. 20005	535+12.39 / 63.84' RT. 21543	535+62.03 / 71.00' LT. 20006	535+63.00 / 61.00' LT. 20007	536+76.25 / 71.00' LT. 20009
536+77.30 / 61.00' LT. 20008	537+06.91 / 63.42' RT. 21546	537+87.39 / 71.00' LT. 20010	537+88.44 / 61.02' LT. 20011	538+88.37 / 61.55' LT. 21539	539+01.43 / 63.00' RT. 20037

- T1 THESE STAKES REFERENCE FOUND OR SET MONUMENTATION. SET 5/8 INCH IRON ROD FLUSH WITH GROUND. IDENTIFIED BY COLORED PLASTIC CAP BEARING SURVEYORS REGISTRATION NUMBER.
- T2
- T3
- BT1 THESE STAKES, IN CULTIVATED AREAS, REFERENCE FOUND OR SET MONUMENTATION. BURIED 5/8 INCH IRON ROD 20 INCHES BELOW GROUND SURFACE. IDENTIFIED BY COLORED PLASTIC CAP BEARING SURVEYORS REGISTRATION NUMBER.
- BT2
- BT3
- STAKING OF PROPOSED RIGHT OF WAY. SET DIVISION OF HIGHWAYS SURVEY MARKER TO MONUMENT THE POSITION SHOWN. IDENTIFIED BY INSCRIPTION DATA AND SURVEYORS REGISTRATION NUMBER.
- M STAKING OF PROPOSED RIGHT OF WAY IN CULTIVATED AREAS. BURIED 5/8 INCH IRON ROD 20 INCHES BELOW GROUND SURFACE TO MARK FUTURE SURVEY MARKER POSITION. IDENTIFIED BY COLORED PLASTIC CAP AND SURVEYORS REGISTRATION NUMBER.
- U STAKING OF PROPOSED RIGHT OF WAY IN CLOSE PROXIMITY TO UNDERGROUND UTILITIES. SET DIVISION OF HIGHWAYS SURVEY MARKER ON 5/8 INCH IRON ROD (BETWEEN 6 INCHES AND 12 INCHES IN LENGTH) TO MONUMENT THE POSITION SHOWN. IDENTIFIED BY INSCRIPTION DATA AND SURVEYORS REGISTRATION NUMBER.

STATE OF ILLINOIS)
) S.S.
COUNTY OF COOK)

THIS IS TO CERTIFY THAT I, COVENTINE FIDIS, AN ILLINOIS PROFESSIONAL LAND SURVEYOR, HAVE SURVEYED THE PLAT OF HIGHWAYS SHOWN HEREON IN SECTION 24, TOWNSHIP 35 NORTH, RANGE 12 EAST OF THE THIRD PRINCIPAL MERIDIAN, IN WILL COUNTY, THAT THE PLAT CORRECTLY REPRESENTS SAID SURVEY, THAT ALL MONUMENTS FOUND AND ESTABLISHED ARE OF PERMANENT QUALITY AND OCCUPY THE POSITIONS SHOWN THEREON AND THAT THE MONUMENTS ARE SUFFICIENT TO ENABLE THE SURVEY TO BE RETRACED. MADE FOR THE DEPARTMENT OF TRANSPORTATION, STATE OF ILLINOIS.

DATED AT CHICAGO, ILLINOIS THIS 16TH DAY OF JANUARY, 2009.

COVENTINE FIDIS
ILLINOIS PROFESSIONAL LAND SURVEYOR NO. 2159
LICENSE EXPIRATION DATE 11/30/2010

THIS PROFESSIONAL SERVICE CONFORMS TO THE CURRENT ILLINOIS MINIMUM SURVEY STANDARDS.



DESCRIPTION LEGEND

950 - MAG NAIL IN UTILITY POLE	957 - NE CORNER OF BUILDING	965 - "4" ON CONCRETE RETAINING WALL	973 - MAG NAIL ON WOOD GUARDRAIL POST
951 - MAG NAIL IN TREE	958 - SE CORNER OF BUILDING	966 - "4" ON CONCRETE HEADWALL	974 - "4" ON CONC. SIGN FOUNDATION
952 - "4" IN POLE FOUNDATION, BASE, OR BOLT	959 - SW CORNER OF BUILDING	967 - MAG NAIL IN LIGHT POLE	975 - MAG NAIL ON STUMP
953 - CENTER TOP SPINDLE BOLT OF FIRE HYDRANT	960 - IRON ROD WITH YELLOW PLASTIC CAP	968 - MAG NAIL IN WOOD SIGN POST	976 - "4" ON BUILDING FACE
954 - "4" ON CURB	961 - "4" ON METAL FENCE POST	969 - MAG NAIL IN RAILROAD TIE	977 - "4" ON RAILROAD SPIKE
955 - "4" ON WALK / CONCRETE PAD	962 - MAG NAIL IN FENCE POST	970 - "4" ON LEG OF ELECTRIC TRANSMISSION TOWER	978 - CORNER OF PLANTER
956 - NW CORNER OF BUILDING	963 - "4" ON MANHOLE, CATCH BASIN, OR VAULT RIM	971 - CORNER OF LARGE SIGN	979 - CORNER OF COLUMN
	964 - MAG NAIL IN PAVEMENT	972 - FENCE CORNER	

RECEIVED
JAN 28 2009
PLATS & LEGALS

**PLAT OF HIGHWAYS
STATE OF ILLINOIS
DEPARTMENT OF TRANSPORTATION
F.A.P. 353
LINCOLN HIGHWAY (U.S. ROUTE 30)**

SECTION: WILL COUNTY
PROJECT: JOB NO. R-91-016-01
STATION: 527+41 TO STATION: 539+01
SCALE: NONE SHEET E14

**BUREAU OF LAND ACQUISITION
201 WEST CENTER COURT
SCHAUMBURG, ILLINOIS 60196**

AMERICAN SURVEYING & ENGINEERING, P.C.
841 N. Galena Avenue / Dixon, IL 61021 / 815-288-6231
8604 W. Catalpa Avenue / Chicago, IL 60656 / 773-444-0800
888 S. Edgelawn Drive / Aurora, IL 60506 / 630-897-4105
Illinois Professional Design Firm No. 184-003192