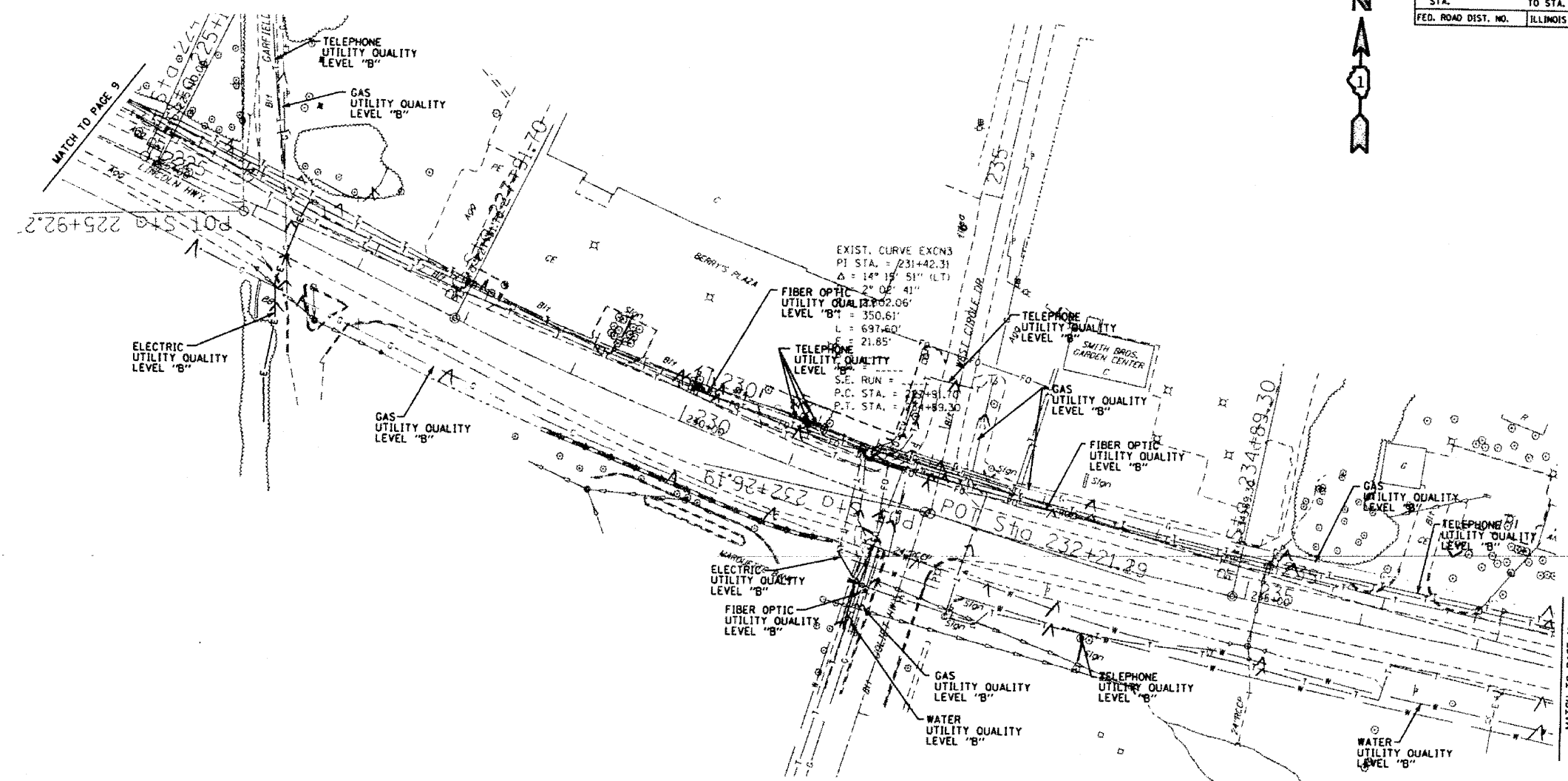


SECTION	COUNTY	TOTAL SHEET SHEETS NO.
112 & 131 WRS-3	WILL	
STA.	TO STA.	
FED. ROAD DIST. NO.	ILLINOIS FED. AID PROJECT	



—T—T—T	TELEPHONE
—W—W—W	WATER
—G—G—G	GAS
—CTV—CTV—CTV	CABLE TELEVISION
—FO—FO—FO	FIBER OPTIC
—E—E—E	ELECTRIC

TBE GROUP, INC.
 CIVIL ENGINEERING • TRANSPORTATION • ENVIRONMENTAL
 PLANNING • UTILITY ENGINEERING/LOCATING

IL09500213, 222, 233
 Checked by: *Sandra Arnesen*
 PAGE 10 OF 25
 Utility Quality Level "B" : Designating

Utility shown on these plans as depicted in the legend have been investigated by TBE Group, Inc in accordance with SUE Industry Standards. All other information shown has been provided to TBE Group, Inc by others. TBE's SUE field investigation was performed during the period 10-13-04 through 04-21-05. Changes to utilities after these dates may have been made and therefore may result in variances from this plan. Consideration should be given to updating this plan if deemed advisable prior to final design and construction.

The SBC locations depicted have been obtained through the application of geophysical methods to determine the existence and approximate horizontal position of these facilities. However, SBC will not provide TBE Group, Inc with utility records nor allow access to their field closures (pedestals/manholes etc.) to help verify the locations of their existing underground facilities. Therefore, TBE is unable to verify the completeness of the SBC locations depicted in accordance with the CI/ASCE Standard 38-02.



205 W. WACKER DRIVE
 SUITE 1020
 CHICAGO, IL 60606
 (312) 704-1970

REVISIONS	
NAME	DATE

ILLINOIS DEPARTMENT OF TRANSPORTATION
 US RT. 30 from William Street to Wolf Road and US RT. 30 from Wolf Road to US RT. 45 in Frankfort, Illinois-Will County
 Contract No: 62479
 Section No.: 112 & 131 WRS-4
 DRAWN BY - KLC
 SCALE : 1" = 50'