

F.A.P. RTE.	SECTION	COUNTY	TOTAL SHEETS	SHEET NO.
347	2010-061-RS	COOK	25	1
FED. ROAD DIST. NO. 1	ILLINOIS	CONTRACT NO. 60L40		

D-91-692-10

STATE OF ILLINOIS
DEPARTMENT OF TRANSPORTATION
DIVISION OF HIGHWAYS
PROPOSED
HIGHWAY PLANS
F.A.P. 347: ROOSEVELT ROAD
BRISTOL AVENUE TO 9TH AVENUE
SECTION: 2010-061-RS
RESURFACING (3P)

FOR INDEX OF SHEETS, SEE SHEET NO. 2

IMPROVEMENT LOCATED WITHIN
 THE VILLAGE OF BROADVIEW
 AND THE VILLAGE OF MAYWOOD

COOK COUNTY
C-91-692-10



LOCATION OF SECTION INDICATED THUS: — ■ —

STATE OF ILLINOIS
 DEPARTMENT OF TRANSPORTATION
 DIVISION OF HIGHWAYS

SUBMITTED MAY 26 20 10


Diane M. O'Keefe DEPUTY DIRECTOR OF HIGHWAYS, REGION ENGINEER

June 05 20 10

Scott E. Stitt, P.E. acting ENGINEER OF DESIGN AND ENVIRONMENT

June 05 20 10

Christine M. Reed DIRECTOR OF HIGHWAYS, CHIEF ENGINEER



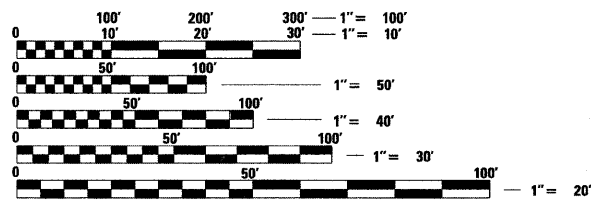
200 22ND Street, Suite 216, Lombard, IL 60148
 630.705.0110 voice, 630.839.2566 fax
 www.mps-il.com

MILLENNIA PROFESSIONAL SERVICES

**PRINTED BY THE AUTHORITY
 OF THE STATE OF ILLINOIS**

DISTRICT ONE - PLAN PREP ENGINEER: KEN ENG (847) 705-4247

TRAFFIC DATA
ROOSEVELT ROAD
 2009 ADT = 28,300
 SPEED LIMIT = 30 MPH

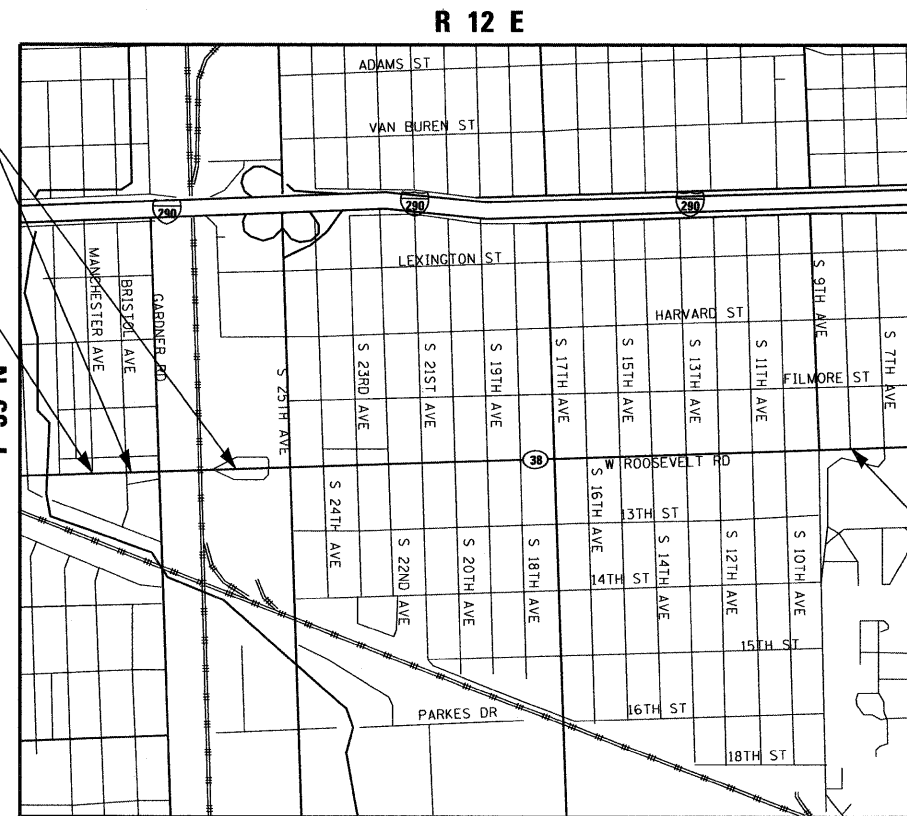


FULL SIZE PLANS HAVE BEEN PREPARED USING STANDARD ENGINEERING SCALES. REDUCED SIZED PLANS WILL NOT CONFORM TO STANDARD SCALES. IN MAKING MEASUREMENTS ON REDUCED PLANS, THE ABOVE SCALES MAY BE USED.

J.U.L.I.E.
 JOINT UTILITY LOCATION INFORMATION FOR EXCAVATION
 1-800-892-0123 OR 811

BRIDGE OMISSION
 STA. 109 + 18 TO
 STA. 118 + 53


IMPROVEMENT
 BEGINS
 STA. 103 + 27



IMPROVEMENT
 ENDS
 STA. 179 + 03

MILLENNIA PROFESSIONAL SERVICES
 THOMAS V. NGO, P.E.
 # 062-058379

Thomas V. Ngo
 DATE: 05/26/10
 SIGNATURE AND SEAL APPLIES TO DRWG.



SCALE: NTS
 PROVISIO TOWNSHIP

GROSS LENGTH OF PROJECT = 6641 FT = 1.26 MILES
 NET LENGTH OF PROJECT = 7576 FT = 1.43 MILES

CONTRACT NO. 60L40