

LEGEND

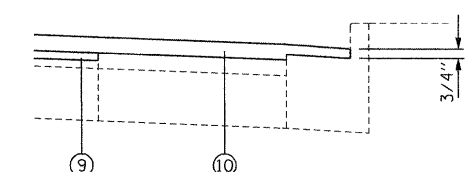
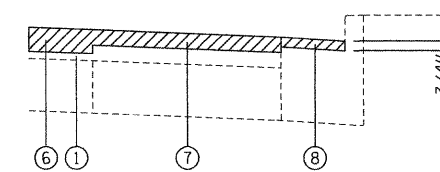
- ① EXISTING HMA SURFACE, 4" +/-
- ② EXISTING +/-9" P.C.C BASE
- ③ EXISTING B-6.12 CURB & GUTTER
- ④ EXISTING B-6.24 CURB & GUTTER
- ⑤ EXISTING P.C.C. SIDEWALK
- ⑥ PROPOSED HMA SURFACE REMOVAL, 2 1/2" (SEE NOTE 1)
- ⑦ PROPOSED HMA SURFACE REMOVAL, 1 3/4"
- ⑧ PROPOSED HMA SURFACE REMOVAL (VARIABLE DEPTH)
- ⑨ PROPOSED POLYMERIZED LEVELING BINDER (MACHINE METHOD), IL-4.75, N50, (3/4")
- ⑩ PROPOSED POLYMERIZED HMA SURFACE COURSE, MIX. F, N90 (IL-9.5 MM), 1 3/4"

NOTES

1. THE CONTRACTOR SHALL PERFORM THE PAVEMENT PATCHING OPERATIONS PRIOR TO THE HMA SURFACE REMOVAL OPERATION. SEE IDOT DISTRICT 1 DETAIL PAVEMENT PATCHING FOR HMA SURFACED PAVEMENT (BD-22) FOR ADDITIONAL INFORMATION.
2. SEE ROADWAY PLAN SHEETS FOR LOCATIONS

OMISSIONS

STA 109+18 TO STA. 118+53



DETAIL "A"

(SEE NOTE 2)

DETAIL "B"

(SEE NOTE 2)

HOT MIX ASPHALT MIXTURE REQUIREMENTS	
MIXTURE TYPE	AIR VOIDS @ Ndes
PAVEMENT RESURFACING	
POLYMERIZED HOT-MIX ASPHALT SURFACE COURSE, MIX "F", N90 (IL-9.5mm)	4% @ 90 GYR.
POLYMERIZED LEVELING BINDER (MACHINE METHOD), IL-4.75, N50	4% @ 50 GYR.
PATCHING	
CLASS D PATCHES (HMA BINDER IL-19 MM)	4% @ 70 GYR.
HMA REPLACEMENT OVER PATCHES (HMA BINDER IL-19MM)	4% @ 70 GYR.
DRIVEWAY	
HMA SURFACE COURSE, MIX C, N50 (IL 9.5 MM); 2"	4% @ 50 GYR.
HMA BASE COURSE (HMA BINDER IL-19MM); 8"	4% @ 50 GYR.

MIXTURE NOTES:

1. THE UNIT WEIGHT USED TO CALCULATE ALL HOT-MIX ASPHALT SURFACE MIXTURES IS 112 LBS/SQ YD/IN
2. THE "AC TYPE" FOR POLYMERIZED HMA MIXES SHALL BE "SBS/SBR PG70-22" AND FOR NON-POLYMERIZED HMA THE "AC TYPE" SHALL BE "PG 64-22" UNLESS MODIFIED BY DISTRICT ONE SPECIAL PROVISIONS. FOR "PERCENT OF RAP" SEE DISTRICT ONE SPECIAL PROVISIONS.

FILE NAME: P:\2009\ME0906-VorVar-Phil\CADD\MOIE-RooseveltRd\Shs\05-DIGL40-sht-Roosevelt-TYP.dgn
 USER: Phil
 USER NAME: Millennium Professional Services



200 22ND Street, Suite 216, Lombard, IL 60148
 630.785.8110 voice, 630.839.2566 fax
 WWW.MPS-IL.COM

MILLENNIA PROFESSIONAL SERVICES

DESIGNED - CJD	REVISED -
DRAWN - CJD	REVISED -
CHECKED - TVN	REVISED -
DATE - 5/28/2010	REVISED -

**STATE OF ILLINOIS
 DEPARTMENT OF TRANSPORTATION**

**ROOSEVELT ROAD
 BRISTOL AVENUE TO 9TH AVENUE**

TYPICAL SECTIONS

F.A.P. RTE. 347	SECTION 2010-061-RS	COUNTY COOK	TOTAL SHEETS 25	SHEET NO. 4
CONTRACT NO. 60L40				
FED. ROAD DIST. NO. 1 ILLINOIS FED. AID PROJECT				

SCALE: SHEET NO. OF SHEETS STA. TO STA.

TYP-01

P:\2009\ME0906-VorVar-Phil\CADD\MOIE-RooseveltRd\Shs\05-DIGL40-sht-Roosevelt-TYP.dgn