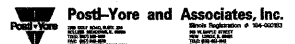


| | | | | | |
|---|-----------------|---------------------------|----------------|--------------------|----------------|
| VILLAGE OF GLENVIEW PROJECT NUMBER E 08-56 | F.A. RTE. NA | SECTION 08-00169-00-PK | COUNTY COOK | TOTAL SHEETS 24 | SHEET NO. 1 |
| | | | ILLINOIS | CONTRACT NO. 63360 | |

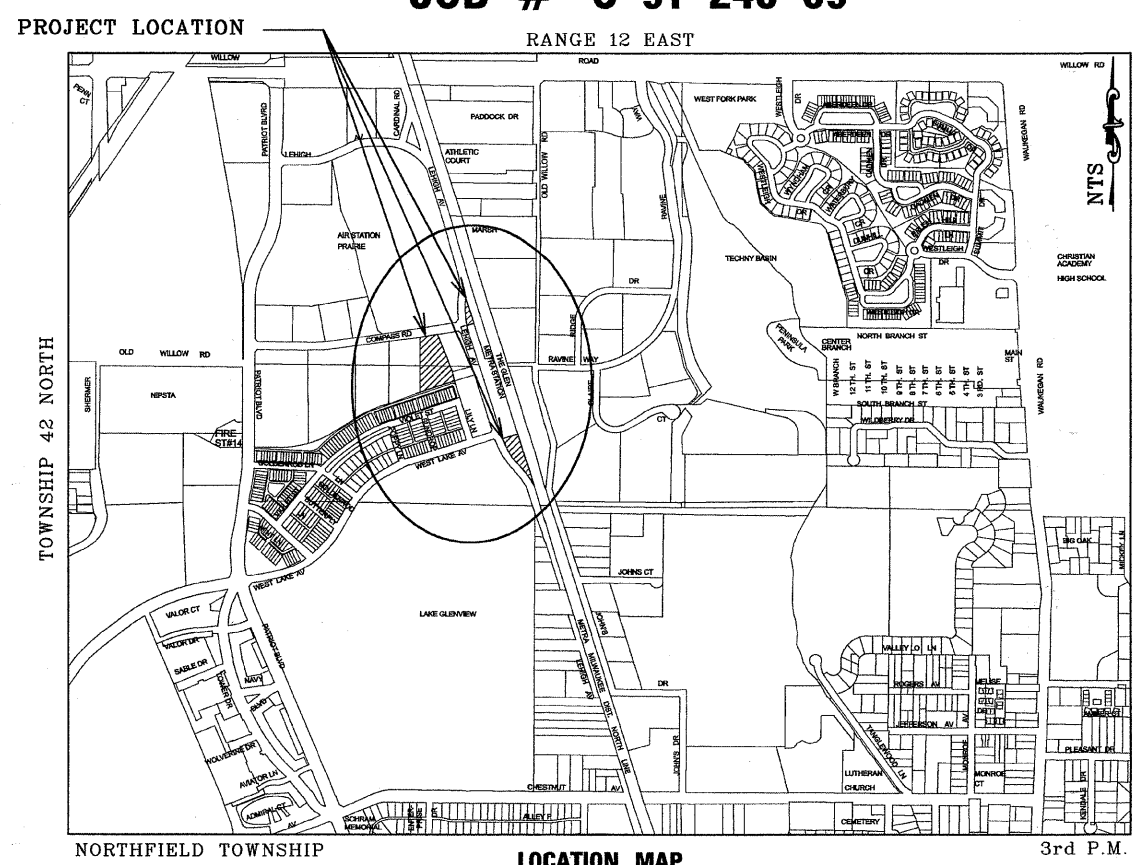
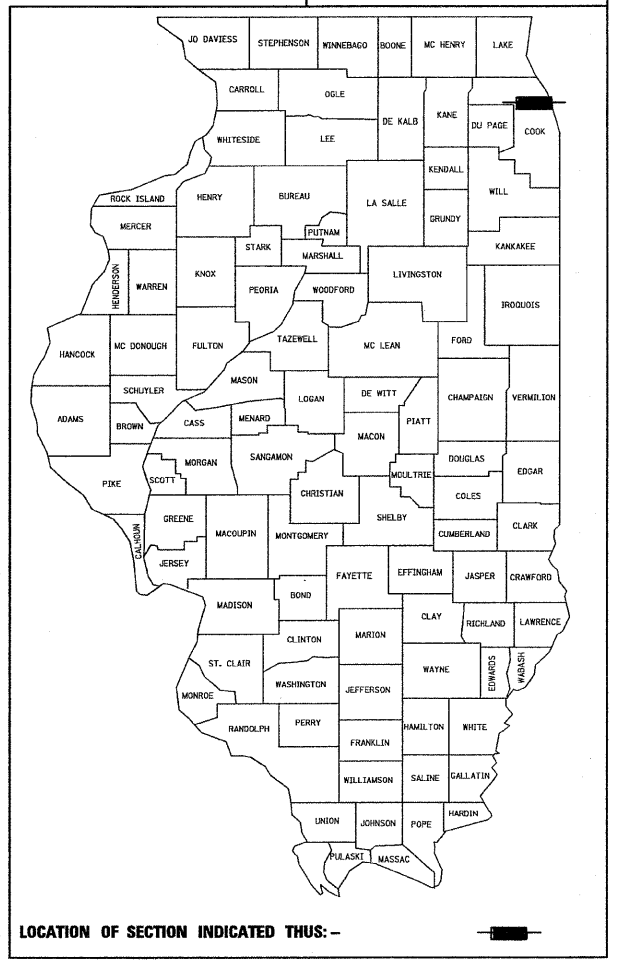
PLANS PREPARED BY:

 Post-Yore and Associates, Inc.
 1100 N. WILSON AVE.
 SUITE 200
 GLENVIEW, ILL. 60025
 (708) 421-1100

SHEET INDEX

1. TITLE SHEET
 2. GENERAL NOTES AND LEGENDS
 3. SUMMARY OF QUANTITIES
 4. OVERALL SITE PLAN
- WEST LOT SOUTH POD PARKING LOT
5. EXISTING CONDITIONS AND REMOVAL PLAN
 6. SITE DIMENSIONAL & PAVING PLAN
 7. SITE GRADING PLAN AND SITE UTILITY PLAN
 8. SOIL EROSION CONTROL PLAN AND LANDSCAPE PLAN
- WEST LOT NORTH POD PARKING LOT
9. EXISTING CONDITIONS AND REMOVAL PLAN
 10. SITE DIMENSIONAL & PAVING PLAN
 11. SITE GRADING PLAN AND SITE UTILITY PLAN
 12. SOIL EROSION CONTROL PLAN AND LANDSCAPE PLAN
- COMPASS ROAD SOUTH PARKING LOT
13. EXISTING CONDITIONS AND REMOVAL PLAN
 14. SITE DIMENSIONAL & PAVING PLAN
 15. SITE UTILITY PLAN
 16. SITE GRADING PLAN
 17. SOIL EROSION CONTROL PLAN & PAVEMENT TYPES
 18. LANDSCAPE PLAN
 19. PARKING LOT LIGHTING PHOTOMETRIC PLAN
20. CONSTRUCTION DETAILS
 21. CONSTRUCTION DETAILS
 22. CONSTRUCTION DETAILS
 23. CONSTRUCTION DETAILS
 24. CONSTRUCTION DETAILS

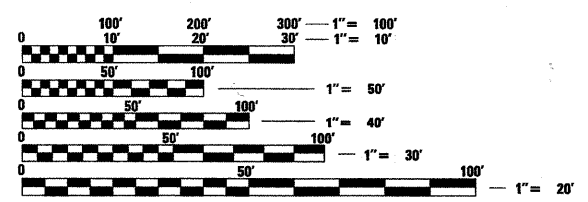
STATE OF ILLINOIS
DEPARTMENT OF TRANSPORTATION
PLANS FOR PROPOSED FEDERAL AID HIGHWAY
LEHIGH AVENUE AND COMPASS ROAD
INTERSECTION OF COMPASS ROAD AND LEHIGH AVENUE AND
INTERSECTION OF LEHIGH AVENUE AND WEST LAKE AVENUE
GLEN-METRA COMMUTER PARKING LOTS

SECTION: 08-00169-00-PK
PROJECT: CMM-9003 (191)
VILLAGE OF GLENVIEW PROJECT E 08-56
COOK COUNTY
JOB # C-91-248-09




- OFF SITE BENCHMARKS
1. VILLAGE OF GLENVIEW GPS MONUMENT STATION NO. 14
ELEV. = 647.73
 2. VILLAGE OF GLENVIEW GPS MONUMENT STATION NO. 18
ELEV. = 631.10
 3. VILLAGE OF GLENVIEW GPS MOUNMENT STATION NO. 55
ELEV. = 636.38

NOTES:
 SEE DETAIL SHEET NO. 23 FOR GPS MONUMENT SHEETS



FULL SIZE PLANS HAVE BEEN PREPARED USING STANDARD ENGINEERING SCALES. REDUCED SIZED PLANS WILL NOT CONFORM TO STANDARD SCALES. IN MAKING MEASUREMENTS ON REDUCED PLANS, THE ABOVE SCALES MAY BE USED.

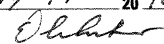
J.U.L.I.E.
JOINT UTILITY LOCATION
INFORMATION FOR EXCAVATION
 1-800-892-0123
 OR 811

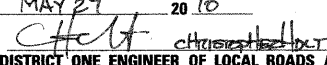


PROJECT MANAGER: LOU ARRIGONI


CONTRACT NO. 63360

STATE OF ILLINOIS
DEPARTMENT OF TRANSPORTATION
DIVISION OF HIGHWAYS

APPROVED May 17 2010

 VILLAGE OF GLENVIEW - VILLAGE ENGINEER

PASSED MAY 27 2010

 DISTRICT ONE ENGINEER OF LOCAL ROADS AND STREETS

RELEASING FOR BID MAY 27, 2010
 BASED ON LIMITED REVIEW


 DEPUTY DIRECTOR OF HIGHWAYS, REGION ONE ENGINEER

PRINTED BY THE AUTHORITY
OF THE STATE OF ILLINOIS

ASSOCIATE FIELD ENGINEER: KEVIN STALLWORTH (847) 705-4169