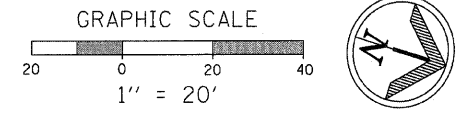
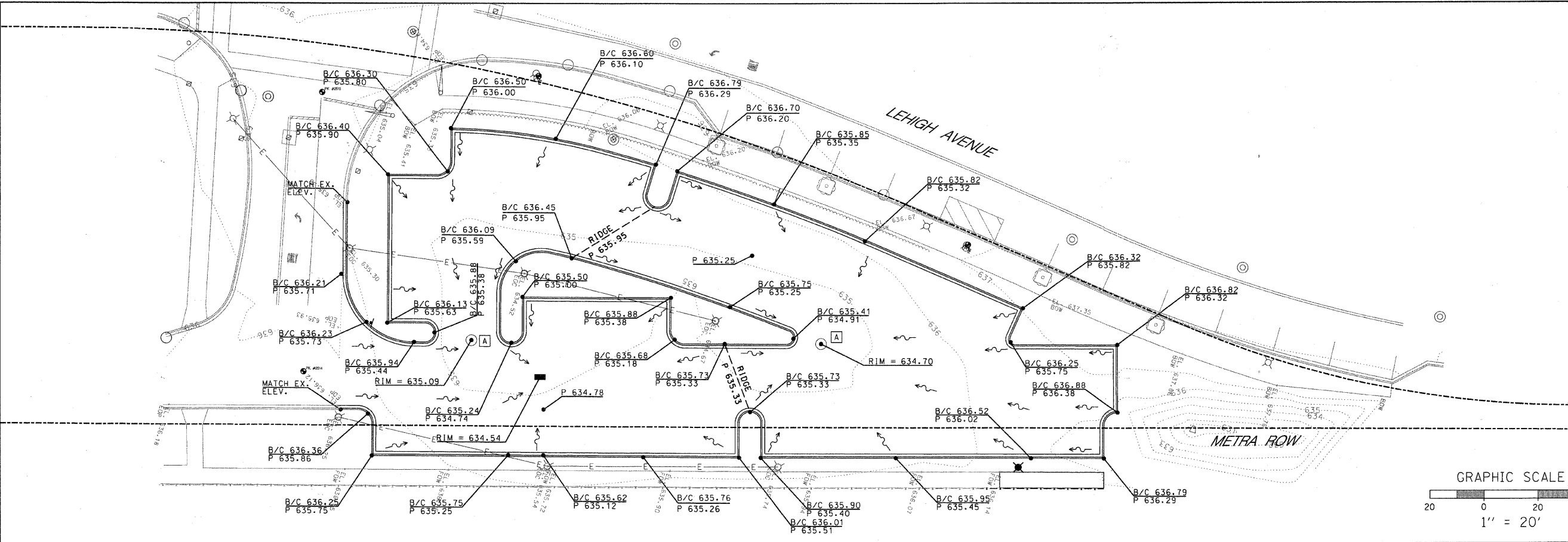
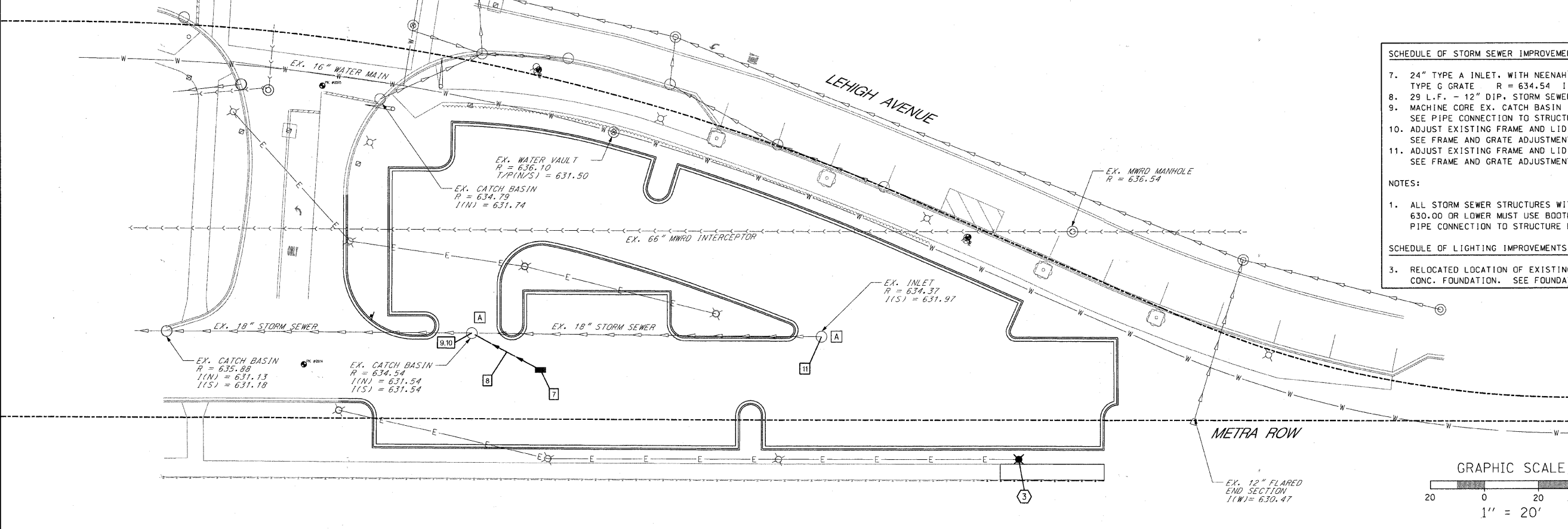


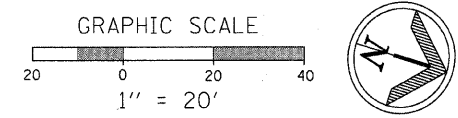
**GRADING PLAN**



**UTILITY PLAN**



- SCHEDULE OF STORM SEWER IMPROVEMENTS**
7. 24" TYPE A INLET, WITH NEENAH R-1713 FRAME AND TYPE G GRATE R = 634.54 I(SW) = 631.80
  8. 29 L.F. - 12" DIP, STORM SEWER @ 0.30%
  9. MACHINE CORE EX. CATCH BASIN I(NE) = 631.70  
SEE PIPE CONNECTION TO STRUCTURE DETAIL ON SHEET 20
  10. ADJUST EXISTING FRAME AND LID R = 635.09  
SEE FRAME AND GRATE ADJUSTMENT DETAIL ON SHEET 21
  11. ADJUST EXISTING FRAME AND LID R = 634.70  
SEE FRAME AND GRATE ADJUSTMENT DETAIL ON SHEET 21
- NOTES:**
1. ALL STORM SEWER STRUCTURES WITH PIPE ELEVATIONS OF 630.00 OR LOWER MUST USE BOOTED CONNECTION SEE PIPE CONNECTION TO STRUCTURE DETAIL ON SHEET 20
- SCHEDULE OF LIGHTING IMPROVEMENTS**
3. RELOCATED LOCATION OF EXISTING LIGHT POLE WITH NEW CONC. FOUNDATION. SEE FOUNDATION DETAIL ON SHEET 21



<b>PLANS PREPARED BY:</b> 	SURVEY - DJG	DESIGNED - DJG	REVISED - 10/05/09 PER BLRS
	UTILITIES - JC	DRAWN - DJG	REVISED -
	CHECKED - DJG	CHECKED - LVA	REVISED -
	DATE - 04-23-09	DATE - 09-17-09	REVISED -

**VILLAGE OF GLENVIEW  
PROJECT E 08-56**

**SITE GRADING PLAN AND SITE UTILITY PLAN  
WEST LOT NORTH POD PARKING LOT**

SCALE: 1" = 20' SHEET NO. 11 OF 24 SHEETS

F.A. RTE. NA	SECTION 08-00169-00-PK	COUNTY COOK	TOTAL SHEETS 24	SHEET NO. 11
CONTRACT NO. 63360				
ILLINOIS FED. AID PROJECT				