

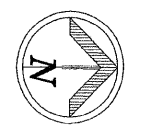
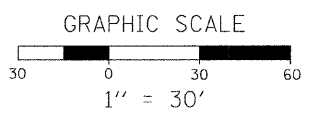
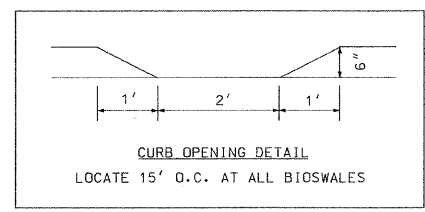
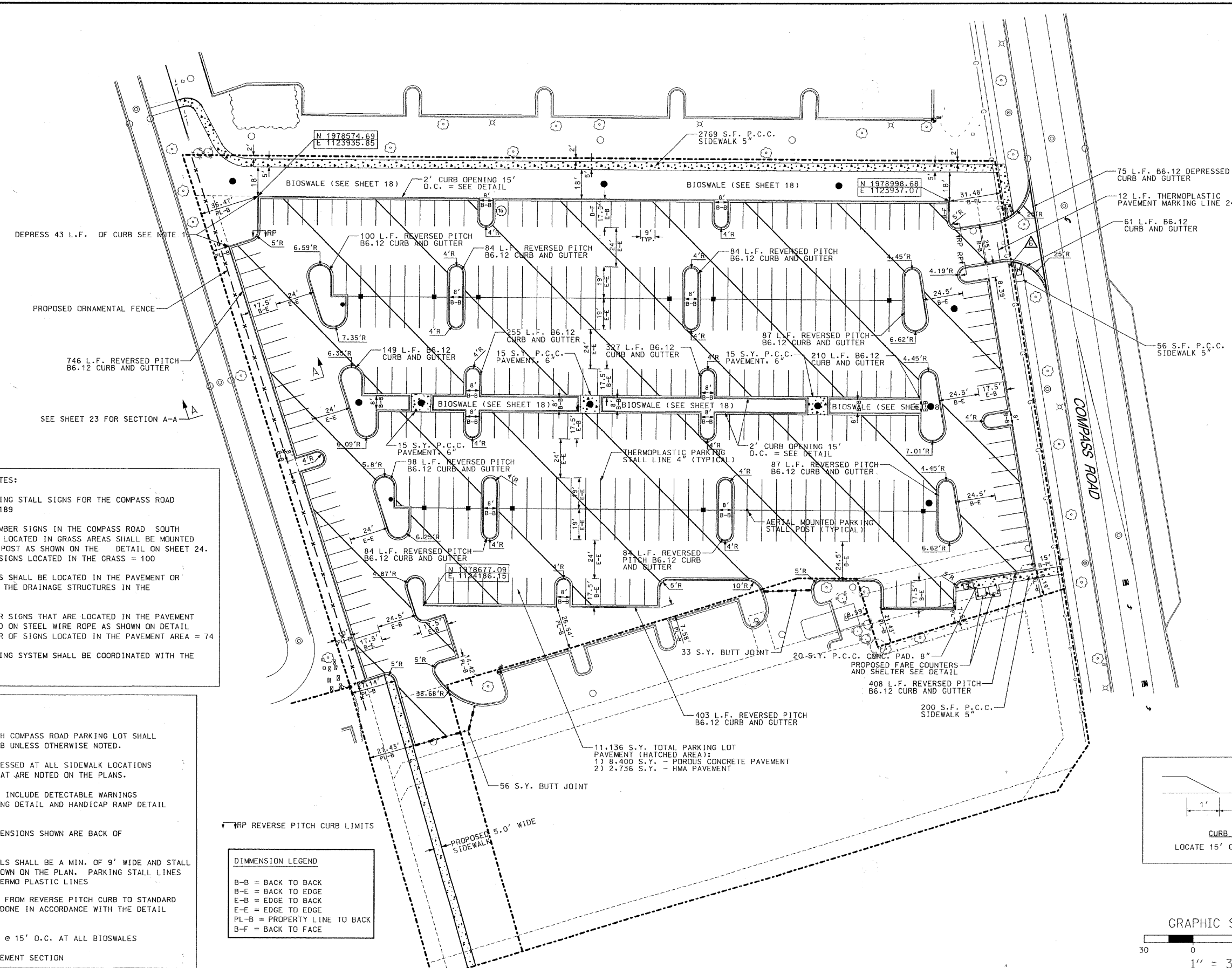


SCHEDULE OF SIGNS 

6. STOP SIGN R1-1



R1-1  
30" x 30"




- PARKING STALL SIGNAGE NOTES:**
- TOTAL NUMBER OF PARKING STALL SIGNS FOR THE COMPASS ROAD SOUTH PARKING LOT = 189
  - ALL PARKING STALL NUMBER SIGNS IN THE COMPASS ROAD SOUTH PARKING LOT THAT ARE LOCATED IN GRASS AREAS SHALL BE MOUNTED ON A GALVANIZED 2 3/8" POST AS SHOWN ON THE DETAIL ON SHEET 24. THE TOTAL NUMBER OF SIGNS LOCATED IN THE GRASS = 100
  - NO POST MOUNTED SIGNS SHALL BE LOCATED IN THE PAVEMENT OR CONCRETE PADS AROUND THE DRAINAGE STRUCTURES IN THE CENTER ISLAND.
  - PARKING STALLS NUMBER SIGNS THAT ARE LOCATED IN THE PAVEMENT AREA SHALL BE MOUNTED ON STEEL WIRE ROPE AS SHOWN ON DETAIL SHEET 24 TOTAL NUMBER OF SIGNS LOCATED IN THE PAVEMENT AREA = 74
  - PARKING STALL NUMBERING SYSTEM SHALL BE COORDINATED WITH THE VILLAGE OF GLENVIEW.

- NOTES:**
- ALL CURB IN THE SOUTH COMPASS ROAD PARKING LOT SHALL BE REVERSE PITCH CURB UNLESS OTHERWISE NOTED.
  - CURBS SHALL BE DEPRESSED AT ALL SIDEWALK LOCATIONS AND ANY LOCATIONS THAT ARE NOTED ON THE PLANS.
  - HANDICAP RAMPS SHALL INCLUDE DETECTABLE WARNINGS SEE DETECTABLE WARNING DETAIL AND HANDICAP RAMP DETAIL ON SHEET 24.
  - ALL CURB RADIUS DIMENSIONS SHOWN ARE BACK OF CURB RADIUS.
  - ALL PARKING LOT STALLS SHALL BE A MIN. OF 9' WIDE AND STALL DEPTH SHALL BE AS SHOWN ON THE PLAN. PARKING STALL LINES SHALL BE 4" WHITE THERMO PLASTIC LINES
  - ALL CURB TRANSITIONS FROM REVERSE PITCH CURB TO STANDARD PITCH CURB SHALL BE DONE IN ACCORDANCE WITH THE DETAIL SHOWN ON SHEET 21
  - CURB OPENINGS LOCATE @ 15' O.C. AT ALL BIOSWALES
  - SEE SHEET 23 FOR PAVEMENT SECTION

**DIMENSION LEGEND**

- B-B = BACK TO BACK
- B-E = BACK TO EDGE
- E-B = EDGE TO BACK
- E-E = EDGE TO EDGE
- PL-B = PROPERTY LINE TO BACK
- B-F = BACK TO FACE

<b>PLANS PREPARED BY:</b> 	SURVEY - DJG	DESIGNED - DJG	REVISED - 10/05/09 PER BLRS
	UTILITIES - JC	DRAWN - DJG	REVISED - 12/03/09 VOG
	CHECKED - DJG	CHECKED - LVA	REVISED -
	DATE - 04-23-09	DATE - 09-17-09	REVISED -

**VILLAGE OF GLENVIEW  
PROJECT E 08-56**

**SITE DIMENSIONAL AND PAVING PLAN  
COMPASS ROAD SOUTH PARKING LOT**

SCALE: 1" = 30' SHEET NO. 14 OF 24 SHEETS

F.A. RTE. NA	SECTION 08-00169-00-PK	COUNTY COOK	TOTAL SHEETS 24	SHEET NO. 14
CONTRACT NO. 63360				
ILLINOIS FED. AID PROJECT				