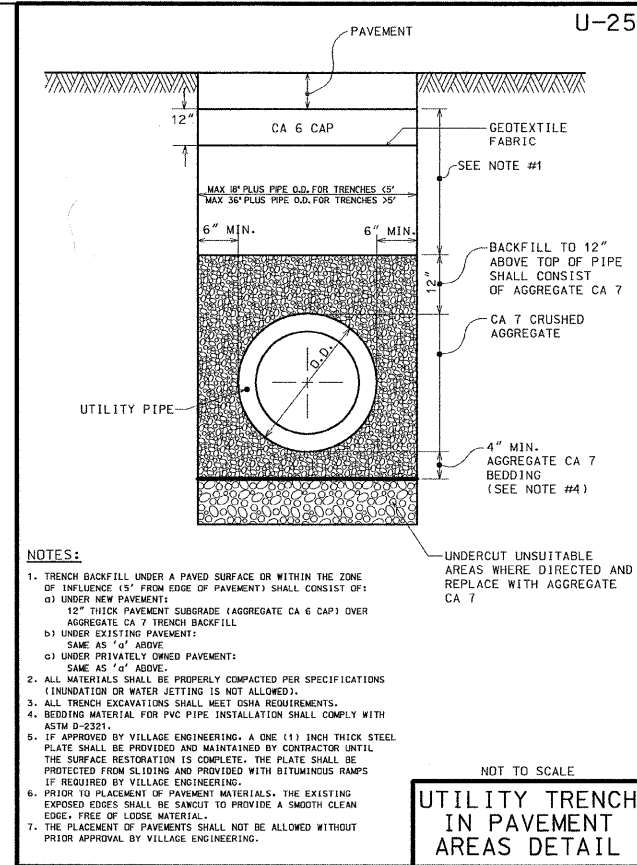


- NOTES:**
1. SILT FENCE (PERIMETER EROSION BARRIER) SHALL BE PLACED AT LOCATIONS SHOWN ON THE PLANS AND WHERE INDICATED BY VILLAGE ENGINEERING.
 2. ATTACH GEOTEXTILE FABRIC TO WIRE MESH WITH HOG RINGS, TO WOOD POSTS WITH NAILS, AND TO STEEL POSTS WITH TIE-WIRES AT TOP AND MID-SECTION.
 3. OVERLAP GEOTEXTILE FABRIC BY 6" AND FOLD WHERE 2 SECTIONS ADJOIN.
 4. INSPECTION OF SILT FENCES SHALL BE AT LEAST ONCE PER WEEK AND AFTER RAIN EVENTS IN EXCESS OF HALF INCH (1/2") PER DAY OR EQUAL SNOW MELT. REPAIR OR REPLACEMENT OF SILT FENCE SHALL BE MADE PROMPTLY AS NEEDED.
 5. SEDIMENT TRAPPED BY THE SILT FENCE SHALL BE REMOVED (AND PROMPTLY DISPOSED OF) WHENEVER SEDIMENT ACCUMULATION DEPTH AT THE SILT FENCE IS APPROXIMATELY EQUAL TO TWELVE (12) INCHES (ONE-HALF OF SILT FENCE HEIGHT).
 6. MATERIAL (GEOTEXTILE & POST) INSTALLATION, MAINTENANCE, AND SILT FENCE REMOVAL SHALL COMPLY WITH AASHTO, M 288 REQUIREMENTS.
 7. THE FABRIC FOR SILT FENCE SHALL BE A WOVEN FABRIC MEETING THE REQUIREMENTS OF AASHTO M 288 (TABLE 7) FOR UNSUPPORTED SILT FENCE WITH LESS THAN 50 PERCENT GEOTEXTILE ELONGATION.
 8. SILT FENCE SHALL BE MAINTAINED IN PLACE UNTIL COMPLETION OF CONSTRUCTION AND THE UPSLOPE AREA HAS BEEN STABILIZED, AND SHALL BE REMOVED ONLY WHEN DIRECTED BY VILLAGE ENGINEERING.

NOT TO SCALE
SILT FENCE DETAIL

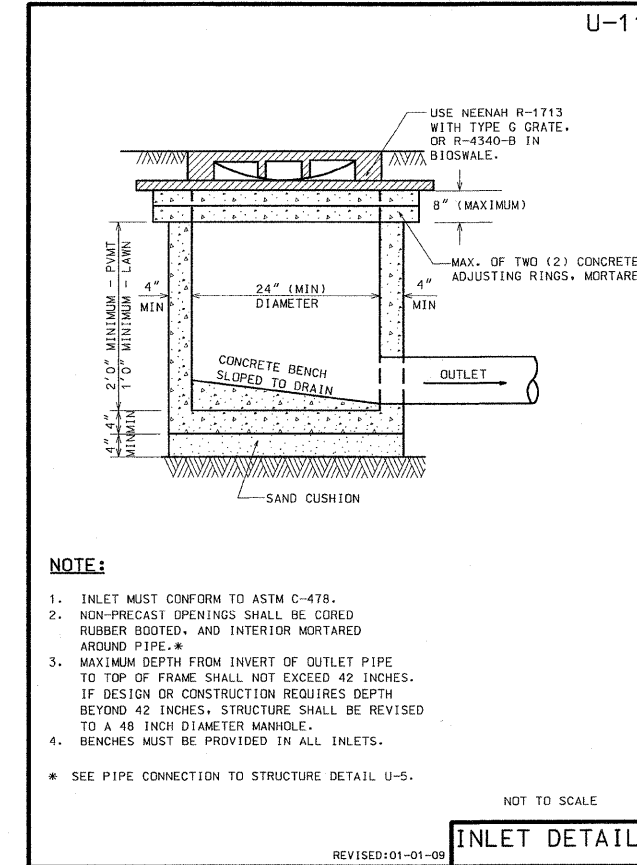
REVISED:01-01-09



- NOTES:**
1. TRENCH BACKFILL UNDER A PAVED SURFACE OR WITHIN THE ZONE OF INFLUENCE (5' FROM EDGE OF PAVEMENT) SHALL CONSIST OF:
 - a) UNDER NEW PAVEMENTS: 12" THICK PAVEMENT SUBGRADE (AGGREGATE CA 6 CAP) OVER AGGREGATE CA 7 TRENCH BACKFILL
 - b) UNDER EXISTING PAVEMENT: SAME AS 'a' ABOVE.
 - c) UNDER PRIVATELY OWNED PAVEMENT: SAME AS 'a' ABOVE.
 2. ALL MATERIALS SHALL BE PROPERLY COMPACTED PER SPECIFICATIONS (INUNDATION OR WATER JETTING IS NOT ALLOWED).
 3. ALL TRENCH EXCAVATIONS SHALL MEET OSHA REQUIREMENTS.
 4. BEDDING MATERIAL FOR PVC PIPE INSTALLATION SHALL COMPLY WITH ASTM D-2321.
 5. IF APPROVED BY VILLAGE ENGINEERING, A ONE (1) INCH THICK STEEL PLATE SHALL BE PROVIDED AND MAINTAINED BY CONTRACTOR UNTIL THE SURFACE RESTORATION IS COMPLETE. THE PLATE SHALL BE PROTECTED FROM SLIDING AND PROVIDED WITH BITUMINOUS RAMP UP IF REQUIRED BY VILLAGE ENGINEERING.
 6. PRIOR TO PLACEMENT OF PAVEMENT MATERIALS, THE EXISTING EXPOSED EDGES SHALL BE SAWN TO PROVIDE A SMOOTH CLEAN EDGE, FREE OF LOOSE MATERIAL.
 7. THE PLACEMENT OF PAVEMENTS SHALL NOT BE ALLOWED WITHOUT PRIOR APPROVAL BY VILLAGE ENGINEERING.

NOT TO SCALE
UTILITY TRENCH IN PAVEMENT AREAS DETAIL

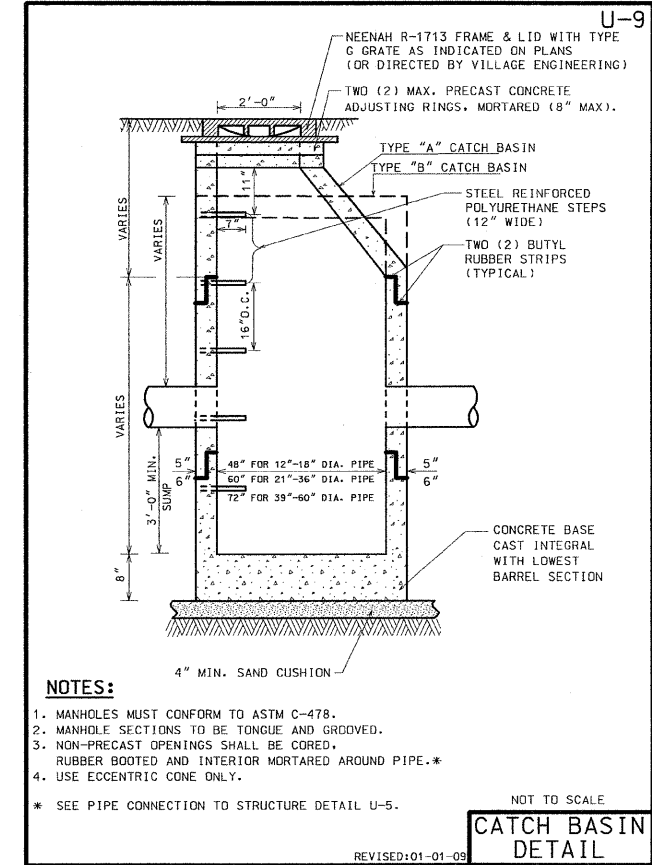
REVISED:01-01-09



- NOTE:**
1. INLET MUST CONFORM TO ASTM C-478.
 2. NON-PRECAST OPENINGS SHALL BE CORED, RUBBER BOOTED, AND INTERIOR MORTARED AROUND PIPE.*
 3. MAXIMUM DEPTH FROM INVERT OF OUTLET PIPE TO TOP OF FRAME SHALL NOT EXCEED 42 INCHES. IF DESIGN OR CONSTRUCTION REQUIRES DEPTH BEYOND 42 INCHES, STRUCTURE SHALL BE REVISED TO A 48 INCH DIAMETER MANHOLE.
 4. BENCHES MUST BE PROVIDED IN ALL INLETS.
- * SEE PIPE CONNECTION TO STRUCTURE DETAIL U-5.

NOT TO SCALE
INLET DETAIL

REVISED:01-01-09



- NOTES:**
1. MANHOLES MUST CONFORM TO ASTM C-478.
 2. MANHOLE SECTIONS TO BE TONGUE AND GROOVED.
 3. NON-PRECAST OPENINGS SHALL BE CORED, RUBBER BOOTED AND INTERIOR MORTARED AROUND PIPE.*
 4. USE ECCENTRIC CONE ONLY.
- * SEE PIPE CONNECTION TO STRUCTURE DETAIL U-5.

NOT TO SCALE
CATCH BASIN DETAIL

REVISED:01-01-09

PLANS PREPARED BY: 	SURVEY - DJG	DESIGNED - DJG	REVISED - 10/05/09 PER BLRS
	UTILITIES - JC	DRAWN - DJG	REVISED - 12/03/09 VOG
	CHECKED - DJG	CHECKED - LVA	REVISED -
	DATE - 04-23-09	DATE - 09-17-09	REVISED -

**VILLAGE OF GLENVIEW
PROJECT E 08-56**

STATE OF ILLINOIS DEPARTMENT OF TRANSPORTATION	
SCALE: NONE	SHEET NO. 22 OF 24 SHEETS

F.A. RTE. NA	SECTION 08-00169-00-PK	COUNTY COOK	TOTAL SHEETS 24	SHEET NO. 22
CONTRACT NO. 63360				
ILLINOIS FED. AID PROJECT				