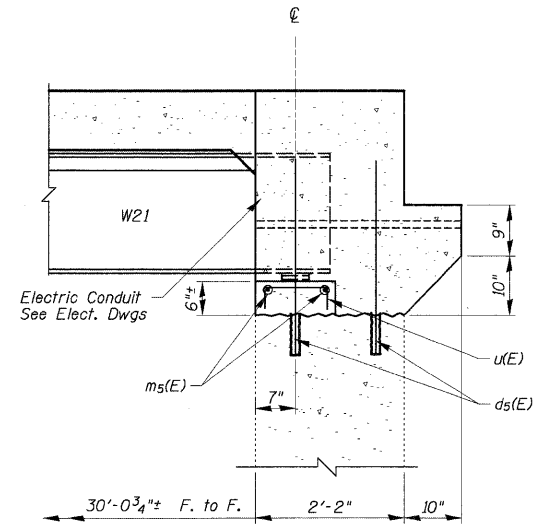
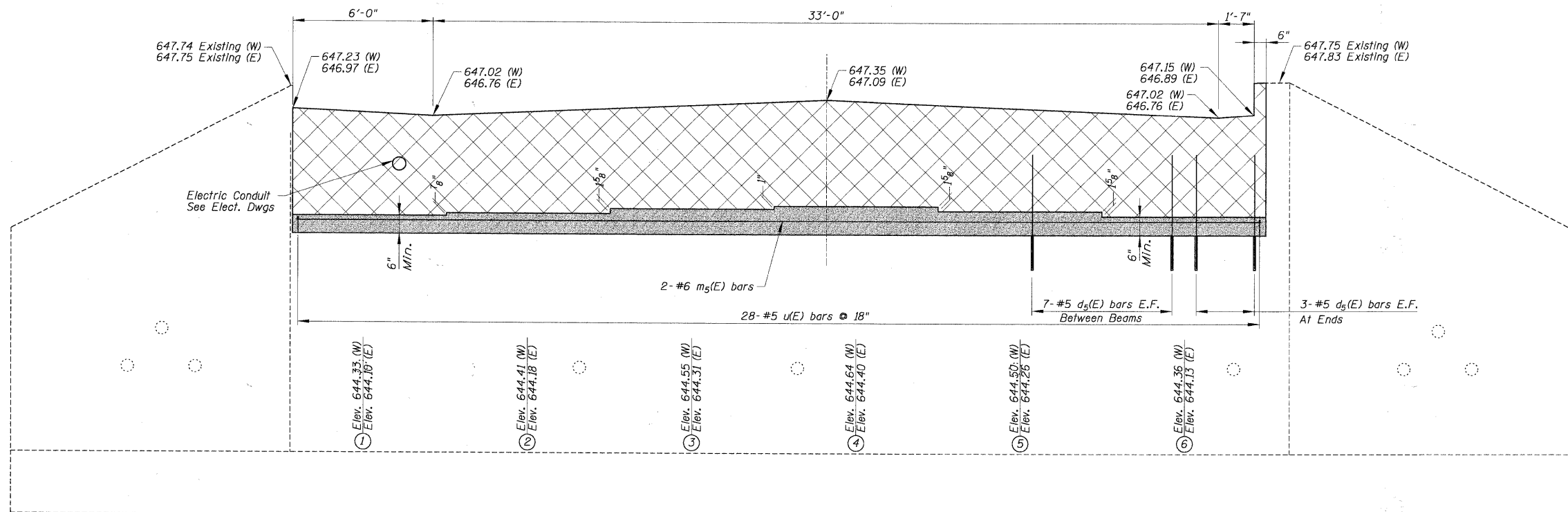


STATE OF ILLINOIS  
DEPARTMENT OF TRANSPORTATION

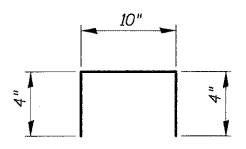


SECTION THRU ABUTMENTS

BILL OF MATERIAL  
(FOR EACH ABUTMENT)

Bar	No.	Size	Length	Shape
d5(E)	82	#5	2'-8"	—
m5(E)	2	#6	40'-6"	—
u(E)	28	#5	1'-6"	□
Reinforcement Bars, Epoxy Coated			Pound	400
Concrete Structures			Cu. Yds.	1.1

Bars indicated thus 1 x 3 - #8 etc. indicates 1 line of bars with 3 lengths per line.



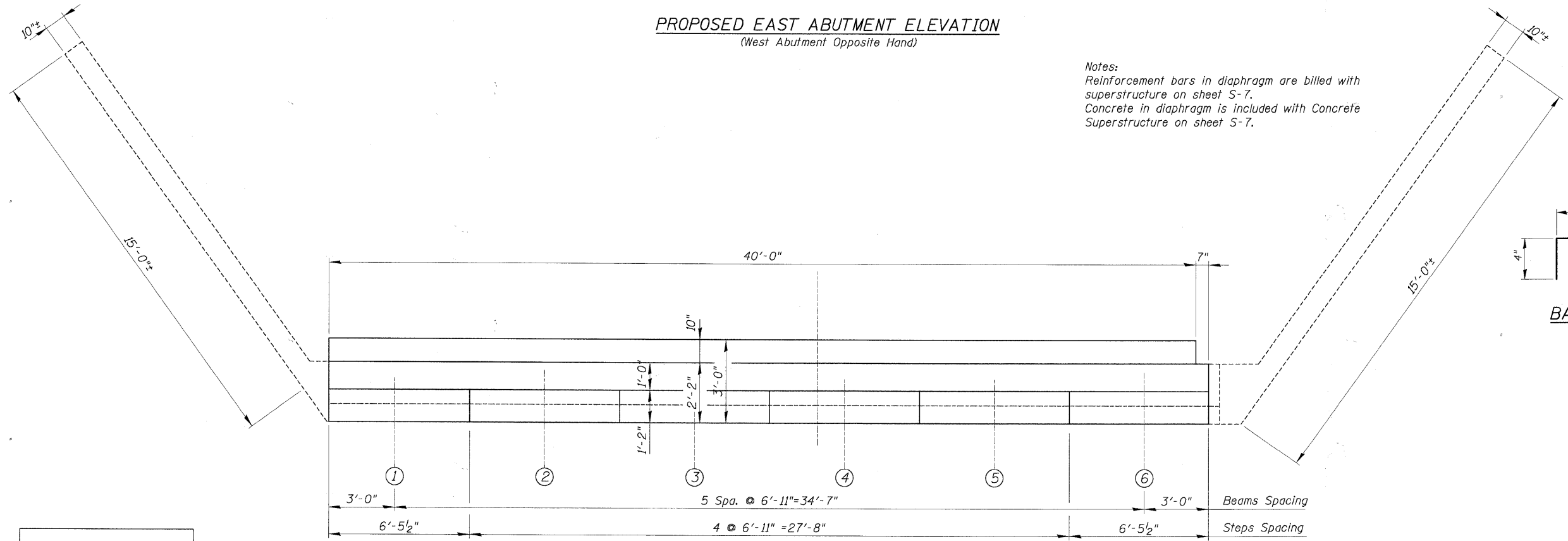
BAR u(E)

LEGEND:

- Concrete Structures
- To Be Poured After Beams Have Been Erected

PROPOSED EAST ABUTMENT ELEVATION  
(West Abutment Opposite Hand)

Notes:  
Reinforcement bars in diaphragm are billed with superstructure on sheet S-7.  
Concrete in diaphragm is included with Concrete Superstructure on sheet S-7.



PROPOSED EAST ABUTMENT PLAN  
(West Abutment Opposite Hand)

PROPOSED ABUTMENT  
WHITEHALL AVENUE OVER  
ADDISON CREEK  
F.A. RTE. 4025  
SECTION 09-00071-00-BR  
COOK COUNTY  
STATION 30+67.04  
STRUCTURE No. 016-7618

DESIGNED -
CHECKED -
DRAWN -
CHECKED -

EXAMINED  
ENGINEER OF BRIDGE DESIGN  
PASSED  
ENGINEER OF BRIDGES AND STRUCTURES

SHEET NO. S-13 SHEETS	F.A. RTE.	SECTION	COUNTY	TOTAL SHEETS	SHEET NO.
	4025	09-00071-00-BR	COOK	31	25
FED. ROAD DIST. NO.			ILLINOIS FED. AID PROJECT		
CONTRACT NO. 63437					