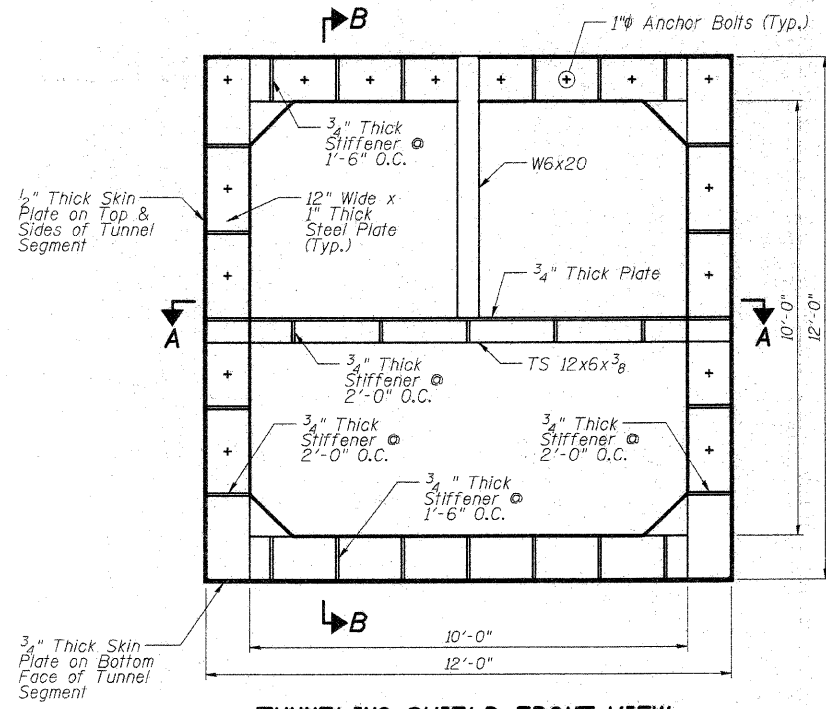
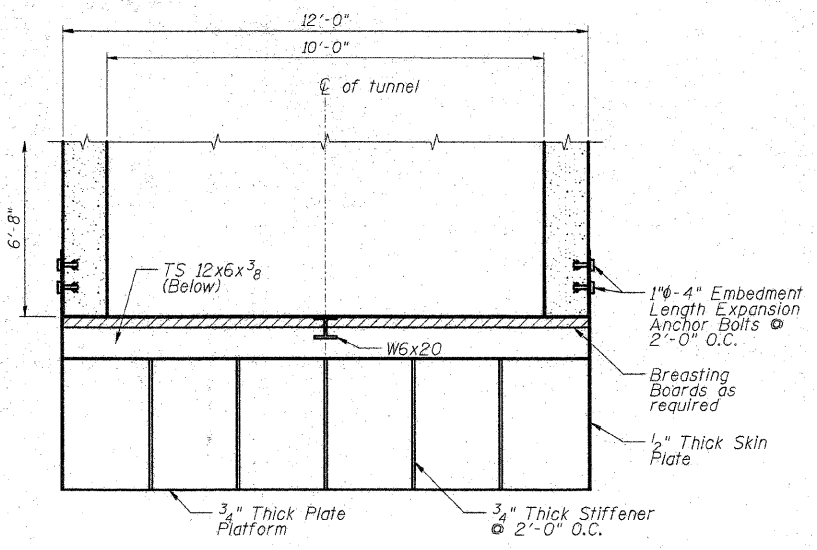


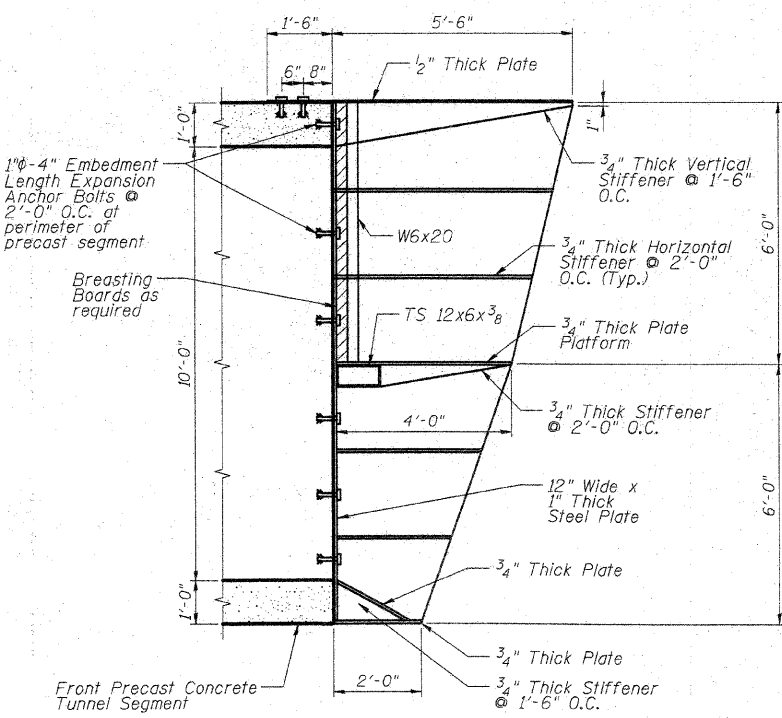
STATE OF ILLINOIS
DEPARTMENT OF TRANSPORTATION



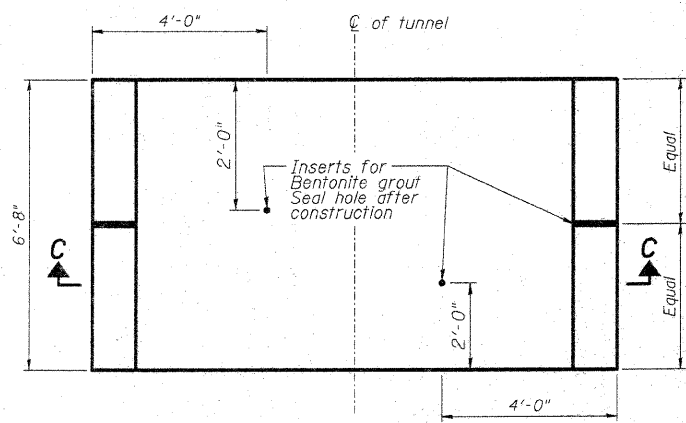
TUNNELING SHIELD FRONT VIEW
Scale: 1/2" = 1'-0"



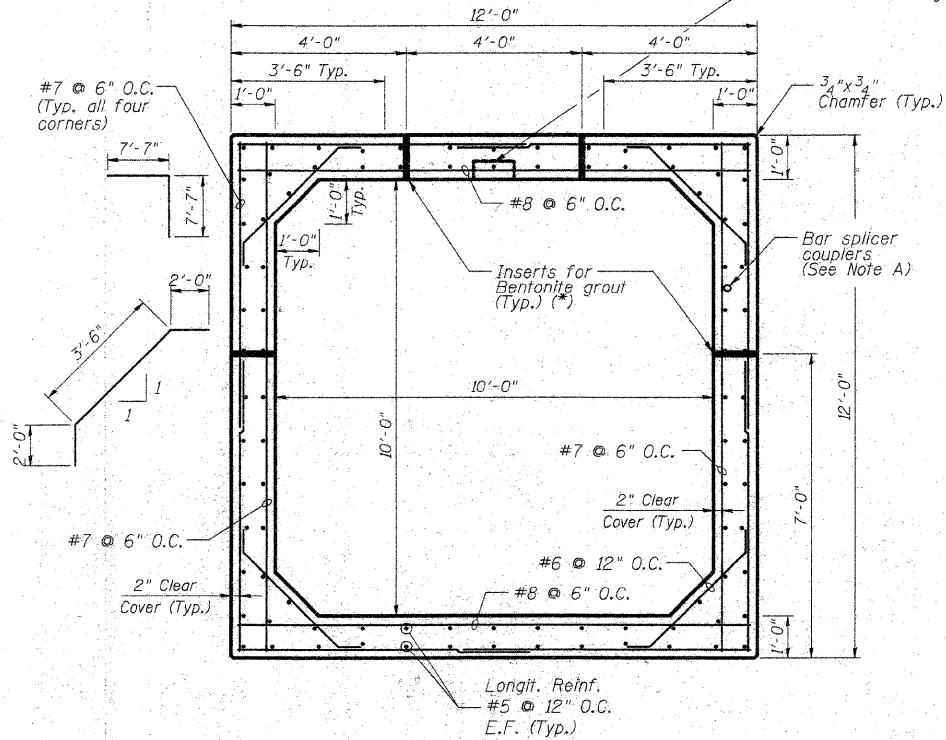
TUNNELING SHIELD SECTION A-A
Scale: 1/2" = 1'-0"



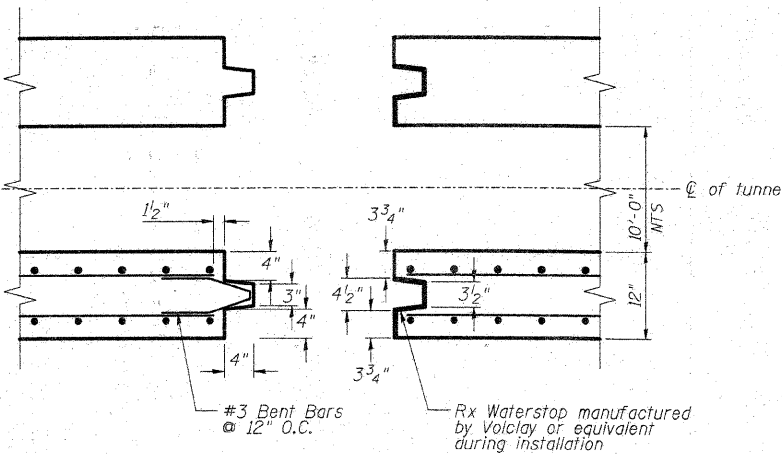
TUNNELING SHIELD SECTION B-B
Scale: 1/2" = 1'-0"



TYPICAL PRECAST CONCRETE TUNNEL SEGMENT PLAN
Scale: 1/2" = 1'-0"



PRECAST CONCRETE TUNNEL SECTION C-C
Scale: 1/2" = 1'-0"



WALL JOINT DETAIL BETWEEN TWO TUNNEL SEGMENTS AROUND THE PERIMETER
Not to Scale

Notes:

Temporary Tunneling Shield shown is schematic only.
It is the responsibility of the Contractor to design the tunneling shield system and submit his calculations and drawings to the Engineer for approval. The calculations and drawings should be sealed by a licensed Illinois Structural Engineer.
All Fillet Welds are 1/4" U.O.N.

DESIGNED	KJH
CHECKED	BB
DRAWN	CJM
CHECKED	AWW

* Contractor should monitor the Bentonite flow so that the Bentonite does not come up to track level.
Note A: Provide bar splicer couplers for #5 bars at 12" cts in the top slab, sidewalls & bottom slab. In the outside face of east & west end sections only. (See Sheet S-9).

Replaced 7-16-10

**JACK TUNNEL DETAILS
STRUCTURE NO. 049-6159**

SHEET NO. S-8 SHEETS S-25	F.A.U. RTE.	SECTION	COUNTY	TOTAL SHEETS	SHEET NO.
	1257	08-00083-00-BT	LAKE	51	28
SN 049-6159			CONTRACT NO. 63450		
FED. ROAD DIST. NO. 1 ILLINOIS FED. AID PROJECT					

McDonough Associates Inc.
Engineers / Architects
130 East Randolph Street Chicago, Illinois 60601