

FOR INDEX OF SHEETS,  
SEE SHEET NO. 2

**STATE OF ILLINOIS**  
**DEPARTMENT OF TRANSPORTATION**  
**DIVISION OF HIGHWAYS**  
**PLANS FOR PROPOSED**  
**FEDERAL AID HIGHWAY**  
FAU 2321 (DIETRICH ROAD)  
FROM FAP 525 (US ROUTE 20)  
TO 736' EAST OF FAP 525 (US ROUTE 20)  
LAPP RESURFACING  
SECTION NO: 10-00018-00-RS  
PROJECT NO: ARA-9003 (616)  
VILLAGE OF HAMPSHIRE  
KANE COUNTY  
C-91-481-10

F.A.U. B.YE.	SECTION	COUNTY	TOTAL SHEETS	SHEET NO.
2321	10-00018-00-RS	KANE	14	1

CONTRACT NO. 63460

PROJECT IS LOCATED IN  
THE VILLAGE OF HAMPSHIRE

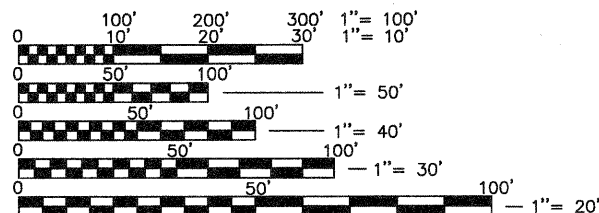
**DESIGN DESIGNATION**

DIETRICH ROAD: MINOR ARTERIAL URBAN  
DESIGN SPEED = 40 M.P.H.  
POSTED SPEED = 40 M.P.H.  
ADT (2007) = 750 VPD



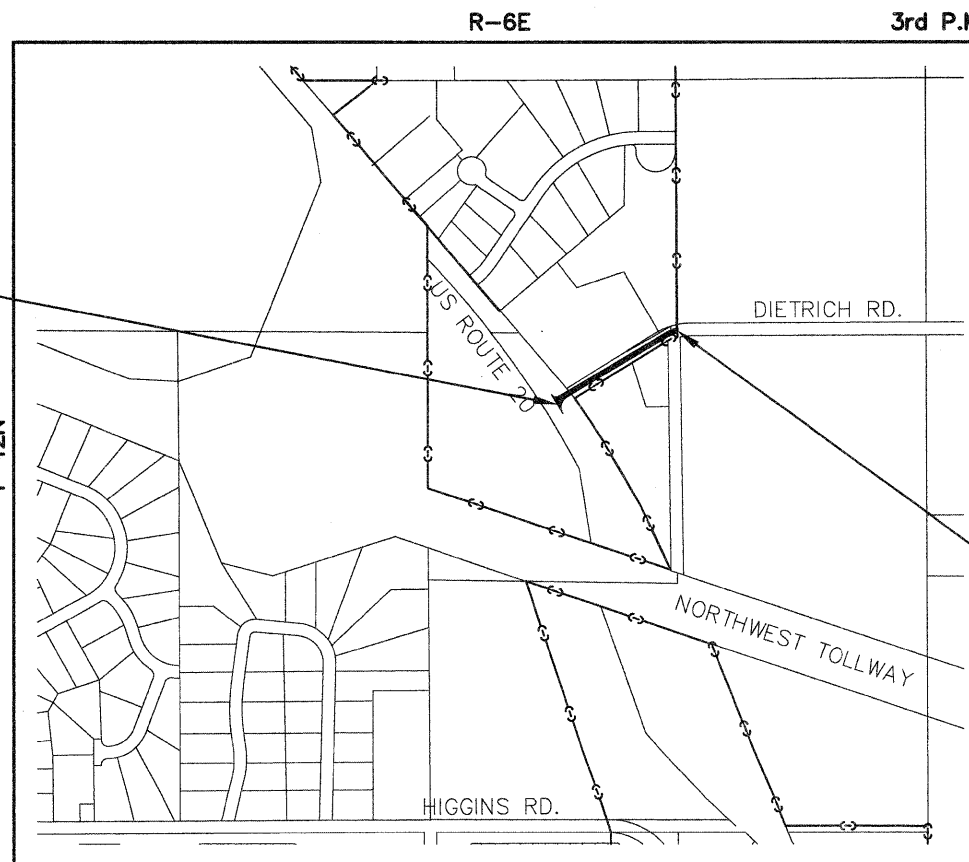
LOCATION OF SECTION INDICATED THUS:

FIELD ENGINEER: MARLIN SOLOMON (847) 705-4407  
CONSULTING ENGINEER: ENGINEERING ENTERPRISES, INC.  
CONTACT: JULIE MORRISON (630)-466-6700



FULL SIZE PLANS HAVE BEEN PREPARED USING STANDARD ENGINEERING SCALES, REDUCED SIZED PLANS WILL NOT CONFORM TO STANDARD SCALES, IN MAKING MEASUREMENTS ON REDUCED PLANS, THE ABOVE SCALES MAY BE USED.

BEGIN IMPROVEMENTS  
STA 10+00  
DIETRICH ROAD



END IMPROVEMENTS  
STA 17+36  
DIETRICH ROAD

HAMPSHIRE TOWNSHIP W 1/2, SW 1/4, SECTION 2

LOCATION MAP  
N.T.S.

NET LENGTH OF PROJECT = 736 FEET (0.14 MILES)  
GROSS LENGTH OF PROJECT = 736 FEET (0.14 MILES)



**ENGINEER'S CERTIFICATION**

I HEREBY CERTIFY THAT THESE PLANS WERE PREPARED UNDER MY DIRECT SUPERVISION.

DATED AT SUGAR GROVE, ILLINOIS,

THIS 12<sup>th</sup> DAY OF May, 2010.

*Julie A. Morrison*  
JULIE A. MORRISON, P.E.  
ILLINOIS LICENSED PROFESSIONAL ENGINEER NO. 062-058372  
EXPIRATION DATE: 11/30/11


STATE OF ILLINOIS  
DEPARTMENT OF TRANSPORTATION  
DIVISION OF HIGHWAYS

APPROVED: MAY 13, 2010  
*Eric Johnson*  
HAMPSHIRE VILLAGE ADMINISTRATOR

PASSED: MAY 27, 2010  
*Christina Hebert*  
DISTRICT ENGINEER OF LOCAL ROADS & STREETS

RELEASING FOR BID BASED ON LIMITED REVIEW: MAY 27, 2010  
*Dina M. O'Leary*  
DEPUTY DIRECTOR OF HIGHWAYS, REGION 1 ENGINEER

**JULIE JOINT UTILITY LOCATION INFORMATION FOR EXCAVATION CALL 811**



Know what's below.  
Call before you dig.

CONTRACT NO. 63460

**Engineering Enterprises, Inc.**  
CONSULTING ENGINEERS  
52 Wheeler Road  
Sugar Grove, Illinois 60554  
Phone: (630) 466-6700

**PRINTED BY THE AUTHORITY OF THE STATE OF ILLINOIS**