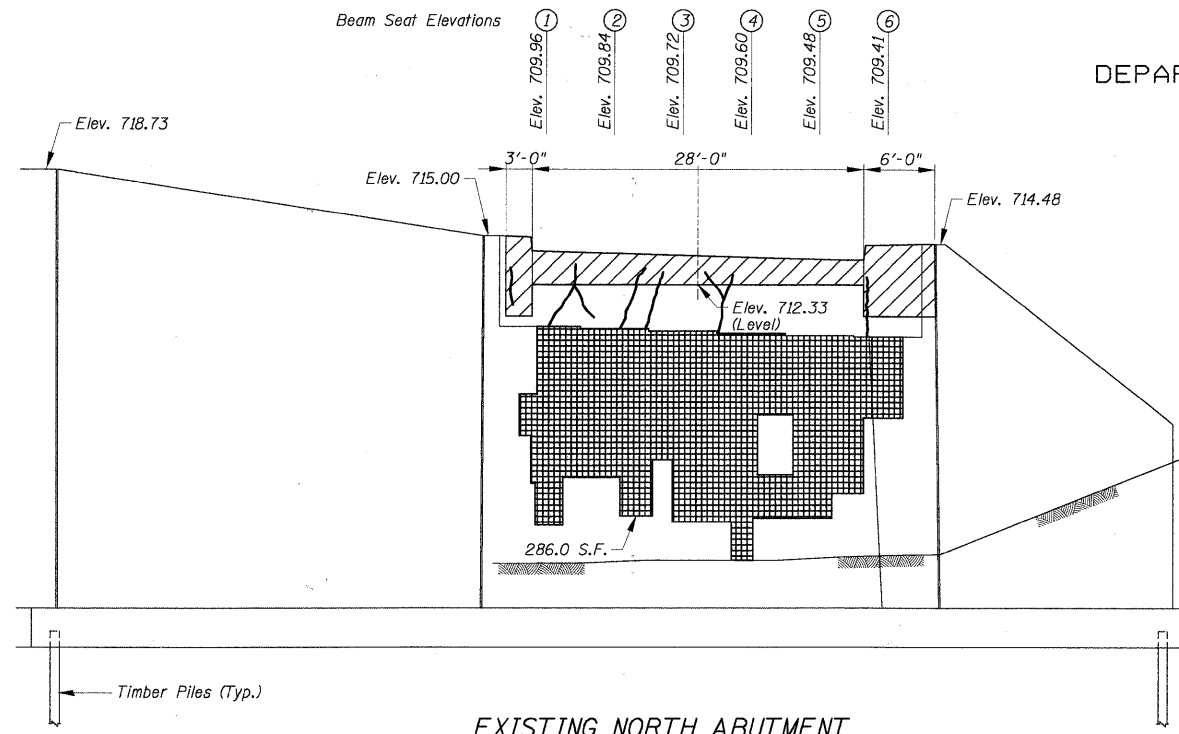
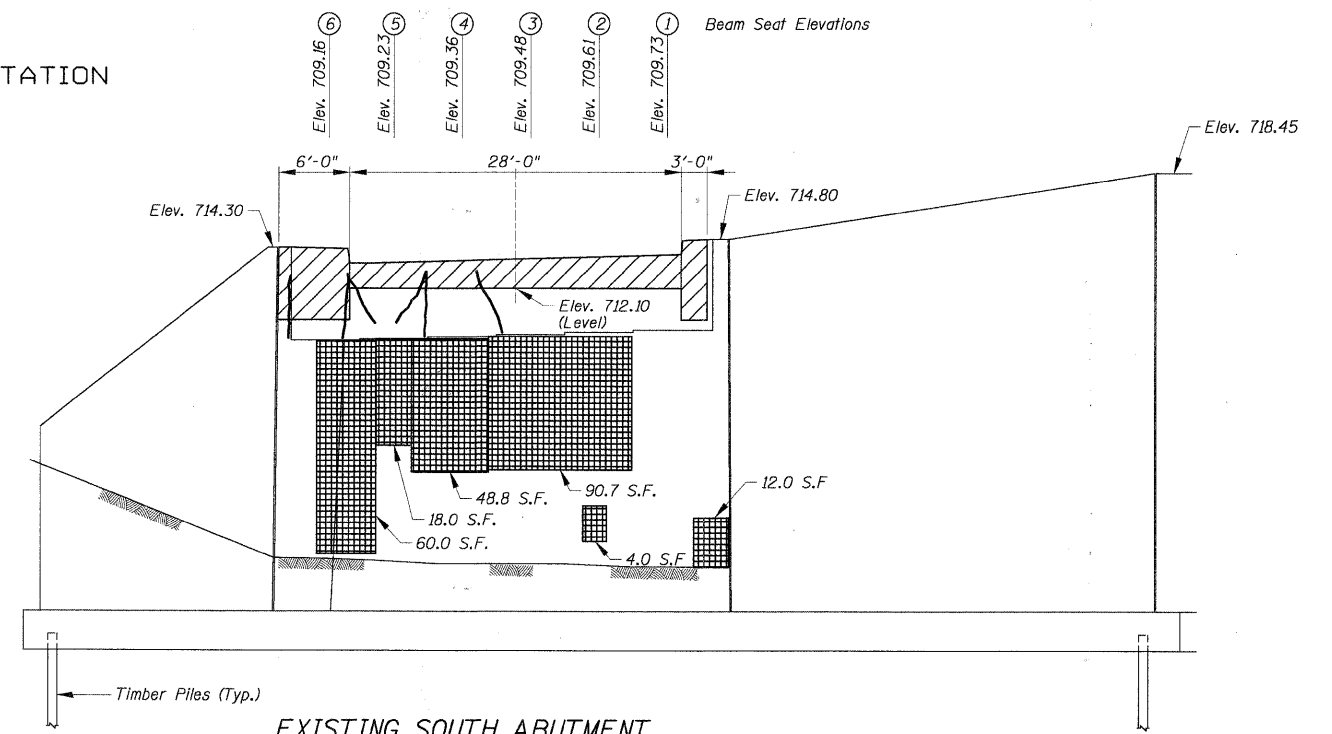


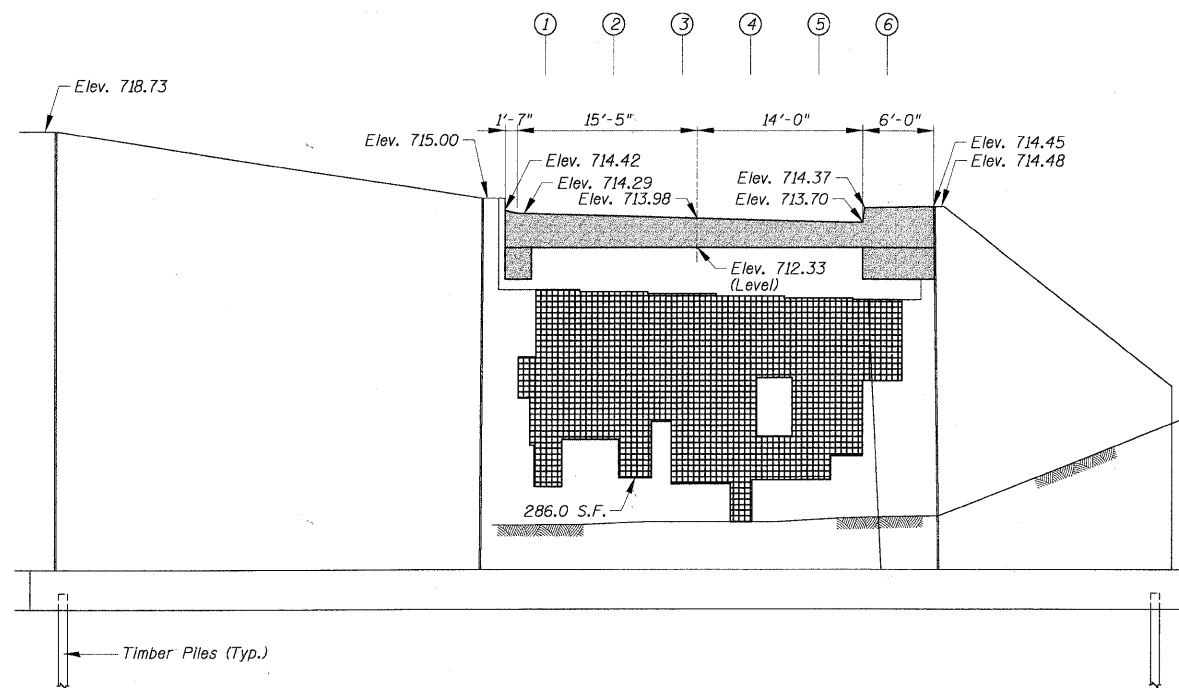
STATE OF ILLINOIS  
DEPARTMENT OF TRANSPORTATION



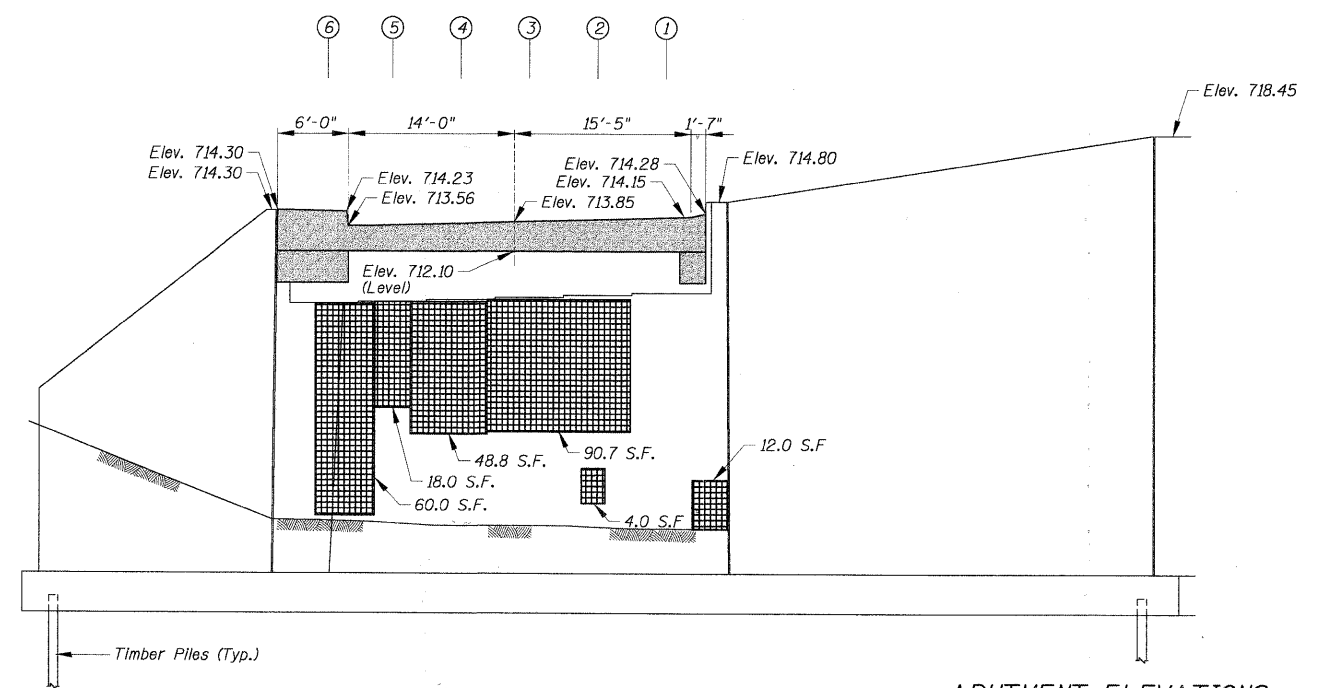
EXISTING NORTH ABUTMENT



EXISTING SOUTH ABUTMENT



PROPOSED NORTH ABUTMENT



PROPOSED SOUTH ABUTMENT

TOTAL BILL OF MATERIAL

ITEM	UNIT	TOTAL
Structural Repair of Concrete (Depth Equal to or Less Than 5 in.)	Sq. Ft.	520
Epoxy Crack Injection	Lin. Ft.	45

- Concrete Repair
- Concrete Removal
- New Concrete
- Cracks

ABUTMENT ELEVATIONS  
CONCRETE REPAIR  
IL RTE 53 E. FRONTAGE ROAD  
OVER SALT CREEK  
F.A.U. ROUTE 2594  
SEC. 04-00091-00-BR  
COOK COUNTY  
STATION 21+81.13  
STRUCTURE NO. 016-1123

DESIGNED -	200
CHECKED -	EXAMINED
DRAWN -	PASSED
CHECKED -	ENGINEER OF BRIDGES AND STRUCTURES

SHEET NO. S-13 SHEETS	F.A.U. RTE.	SECTION	COUNTY	TOTAL SHEETS	SHEET NO.
	2594	04-00091-00-BR	COOK	50	20
FED. ROAD DIST. NO. 1			ILLINOIS FED. AID PROJECT		