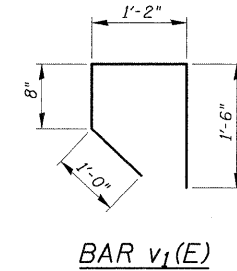
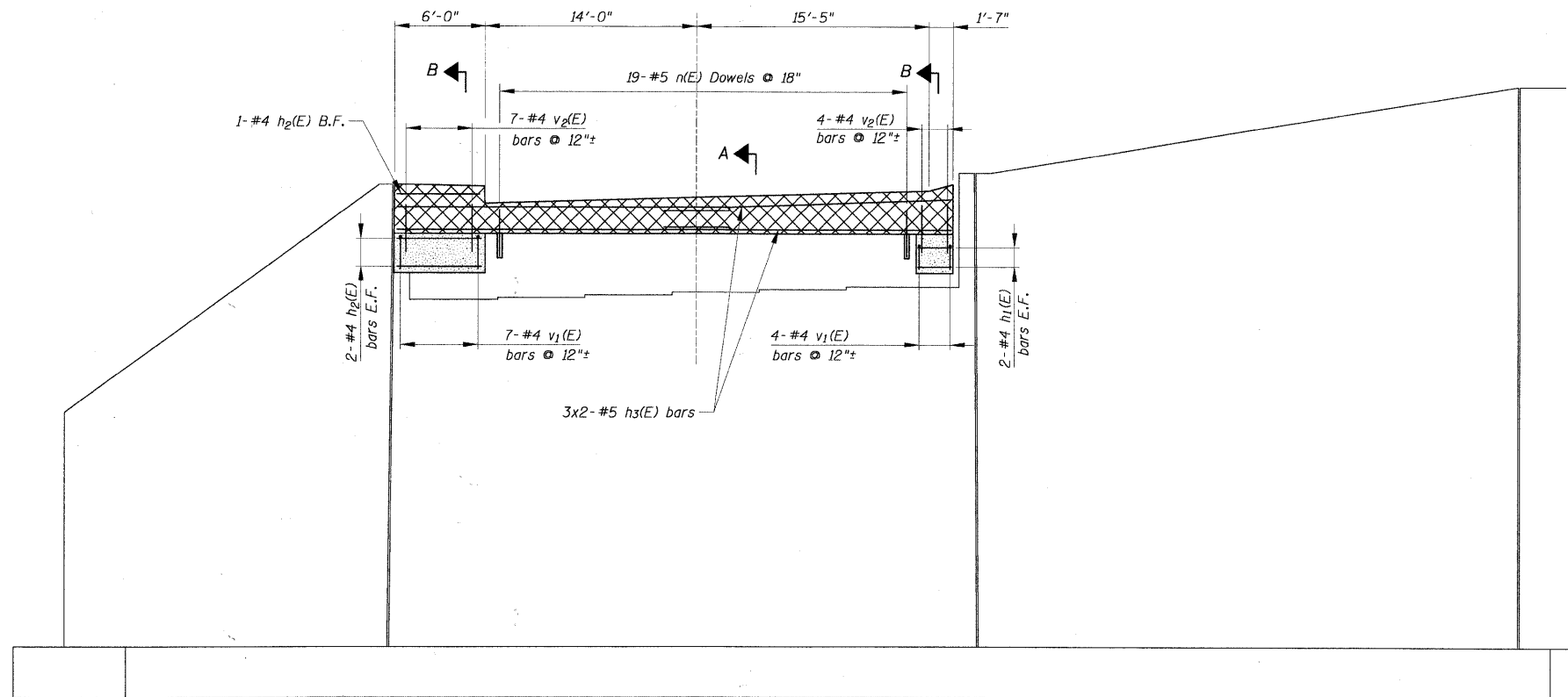


STATE OF ILLINOIS
DEPARTMENT OF TRANSPORTATION

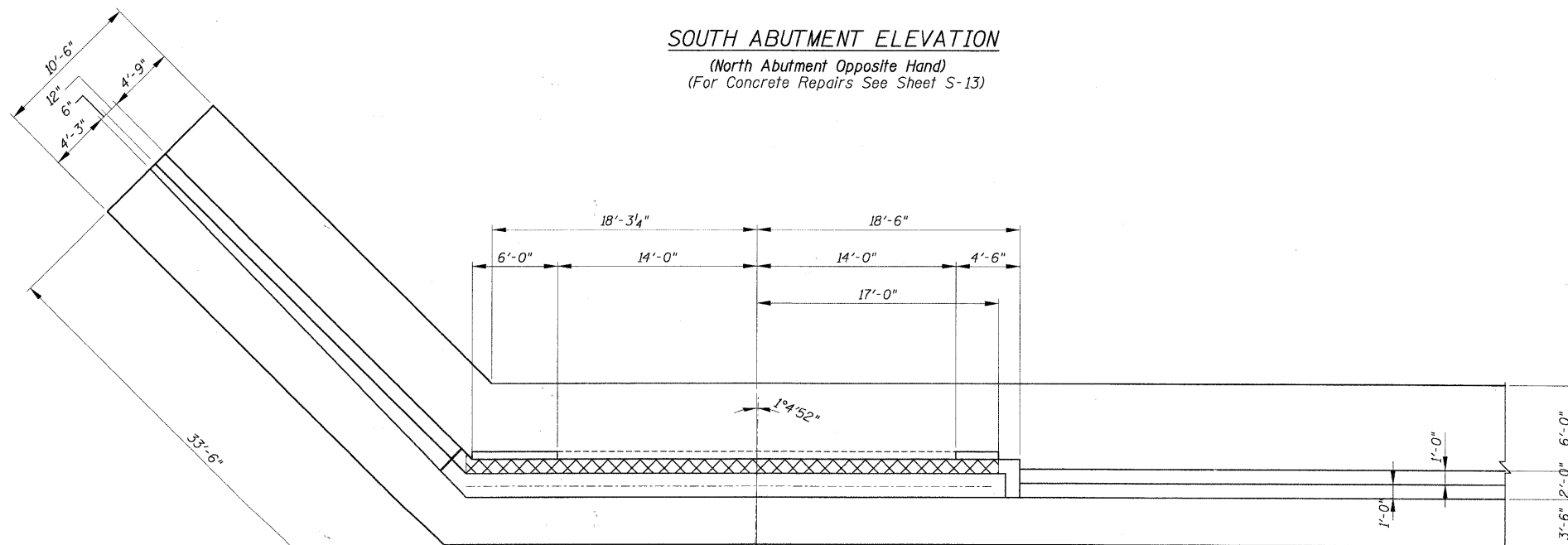
NOTES:
1. See Sheet S-15 For Notes.



NORTH AND SOUTH ABUTMENTS
BILL OF MATERIAL

Bar	No.	Size	Length	Shape
$h_1(E)$	8	#4	2'-6"	—
$h_2(E)$	10	#4	5'-9"	—
$h_3(E)$	12	#5	19'-7"	—
$n(E)$	38	#5	1'-6"	—
$v_1(E)$	22	#4	4'-4"	∇
$v_2(E)$	22	#5	1'-9"	—
Reinforcement Bars, Epoxy Coated			Pound	460
Concrete Structure			Cu. Yds.	6.4
Drill and Grout Bars			Each	38

Bars indicated thus 1 x 3 - #8 etc. indicates 1 line of bars with 3 lengths per line.



SOUTH ABUTMENT ELEVATION
(North Abutment Opposite Hand)
(For Concrete Repairs See Sheet S-13)

SOUTH ABUTMENT PLAN
(North Abutment Opposite Hand)

LEGEND:

- New Concrete
- To Be Poured After Deck Slab Forms Have Been Removed

ABUTMENT PLANS AND ELEVATIONS
IL RTE 53 E. FRONTAGE ROAD
OVER SALT CREEK
F.A.U. ROUTE 2594
SEC. 04-00091-00-BR
COOK COUNTY
STATION 21+81.13
STRUCTURE NO. 016-1123

DESIGNED -	200
CHECKED -	EXAMINED
DRAWN -	PASSED
CHECKED -	ENGINEER OF BRIDGES AND STRUCTURES

SHEET NO. S-14 SHEETS	F.A.U. RTE.	SECTION	COUNTY	TOTAL SHEETS	SHEET NO.
	2594	04-00091-00-BR	COOK	50	21
CONTRACT NO. 63471					
FED. ROAD DIST. NO. 1 ILLINOIS FED. AID PROJECT					