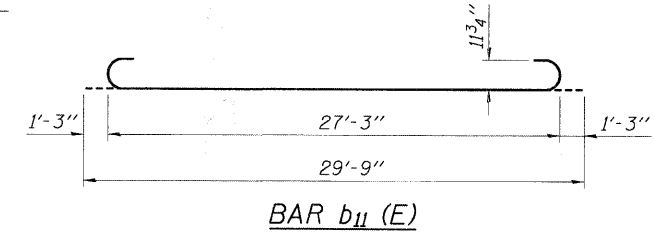
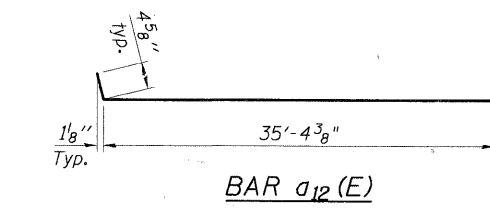
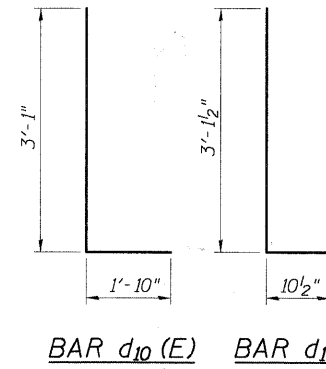
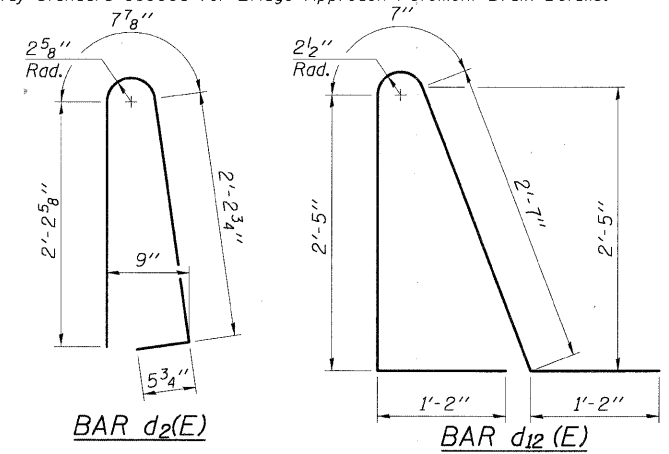


STATE OF ILLINOIS
DEPARTMENT OF TRANSPORTATION

Notes:

See sheet S-16 for Detail A.
Approach slab, sidewalk and parapet concrete shall be paid for as Concrete Superstructure.
Approach footing concrete shall be paid for as Concrete Structures.
Reinforcement shall be paid for as Reinforcement Bars, Epoxy Coated.
For $v_2(E)$ bar details, see sheet S-14.
The approach footing maximum applied service bearing pressure (Q_{max}) = 2.0 ksf.
Cost of excavation for approach footing included with Concrete Structures.
See IDOT Highway Standard 609006 for Bridge Approach Pavement Details.

* Tilt #9 $b_{11}(E)$ bars as required to maintain clearance.
*** Cost included with Concrete Superstructure.

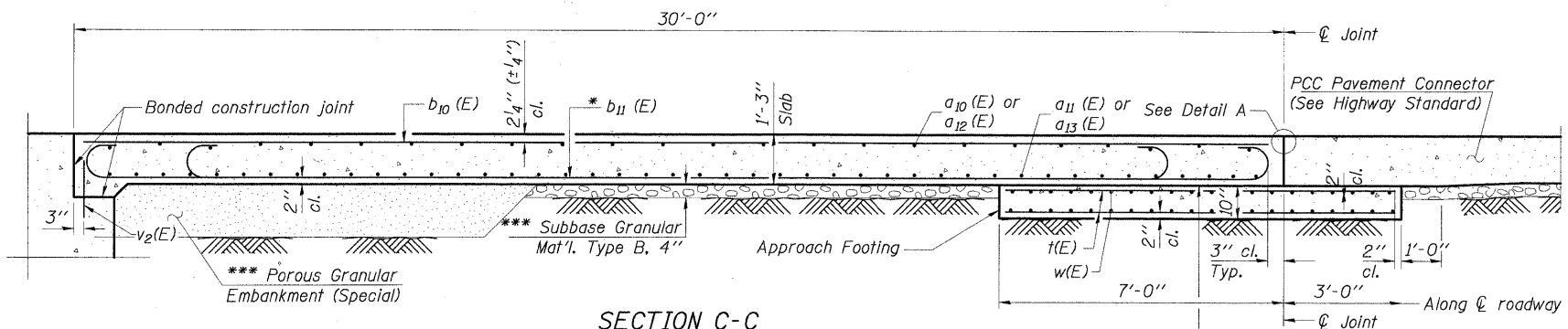


TWO APPROACHES
BILL OF MATERIAL

Bar	No.	Size	Length	Shape
$a_2(E)$	24	#6	6'-0"	—
$a_{10}(E)$	26	#4	36'-6"	—
$a_{11}(E)$	46	#5	36'-6"	—
$a_{12}(E)$	26	#4	35'-9"	—
$a_{13}(E)$	46	#5	35'-4"	—
$b_{10}(E)$	66	#4	29'-8"	—
$b_{11}(E)$	178	#9	29'-9"	—
$b_{12}(E)$	4	#4	14'-8"	—
$b_{13}(E)$	16	#5	29'-8"	—
$c(E)$	60	#5	2'-4"	—
$c_1(E)$	30	#5	5'-6"	—
$c_2(E)$	30	#5	5'-5"	—
$d_2(E)$	34	#5	5'-7"	—
$d_4(E)$	8	#4	2'-0"	—
$d_{10}(E)$	30	#4	4'-11"	—
$d_{11}(E)$	30	#6	4'-0"	—
$d_{12}(E)$	34	#5	7'-11"	—
$e_{10}(E)$	28	#4	14'-8"	—
$e_{11}(E)$	2	#8	14'-8"	—
$t(E)$	148	#4	9'-8"	—
$w(E)$	80	#5	35'-6"	—
Concrete Superstructure		Cu. Yd.	114.7	
Concrete Structures		Cu. Yd.	22.1	
Reinforcement Bars, Epoxy Coated		Pound	30,300	

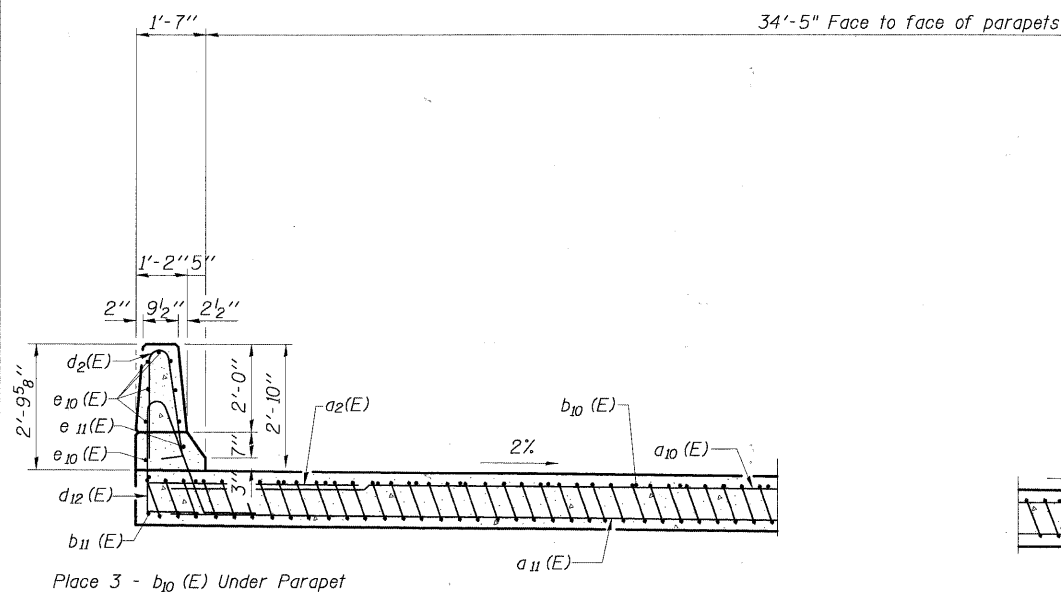
(Sheet 2 of 2)
BRIDGE APPROACH SLAB DETAILS
IL RTE 53 E. FRONTAGE ROAD
OVER SALT CREEK
F.A.U. ROUTE 2594
SEC. 04-00091-00-BR
COOK COUNTY
STATION 21+81.13
STRUCTURE NO. 016-1123

SHEET NO. S-17 SHEETS	F.A.U. RTE.	SECTION	COUNTY	TOTAL SHEETS	SHEET NO.
	2594	04-00091-00-BR	COOK	50	24
			CONTRACT NO. 63471		
FED. ROAD DIST. NO. 1 ILLINOIS FED. AID PROJECT					



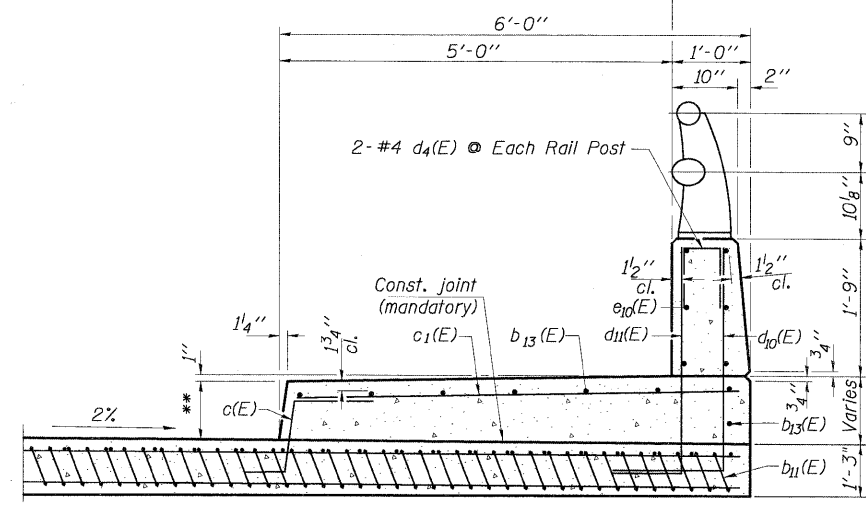
SECTION C-C

*** 10 mil. Polyethylene bond breaker on steel trowel finish



SECTION D-D - NEAR ABUTMENT

(See Plan for dimensions not shown)



SECTION D-D - AT APPROACH FOOTING

(See Plan for dimensions not shown)

*** Vary sidewalk thickness. Thickness is 8" at abutments and decreases to 6" at the ends of the approach pavement.

DESIGNED	200
CHECKED	
DRAWN	
CHECKED	

EXAMINED
PASSED
ENGINEER OF BRIDGE DESIGN
ENGINEER OF BRIDGES AND STRUCTURES

