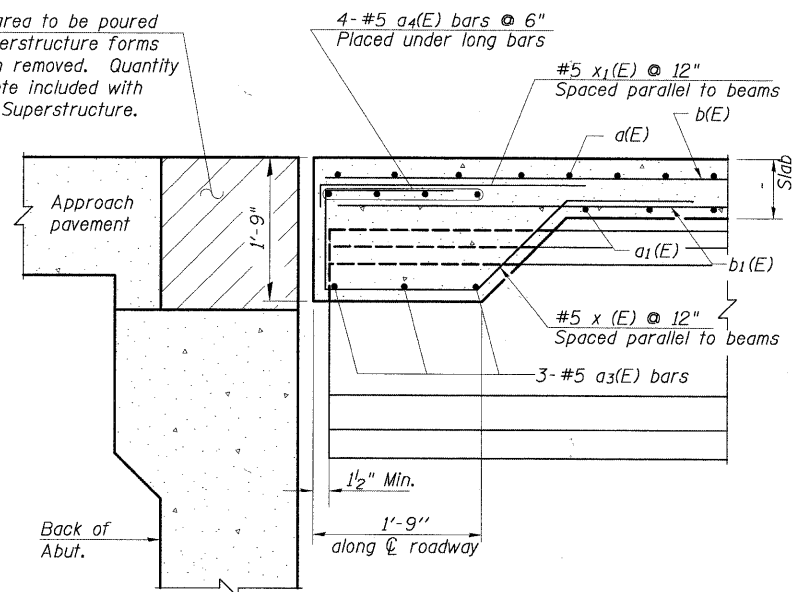
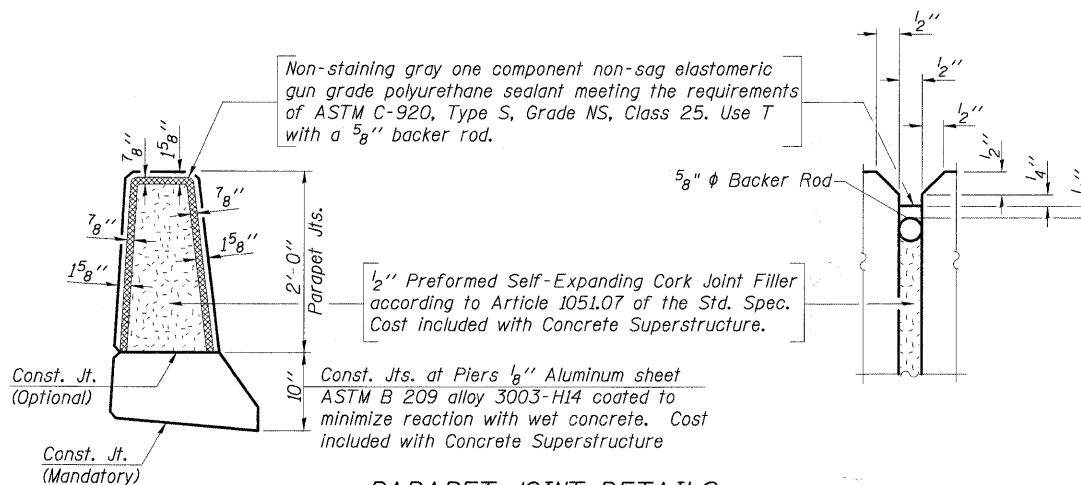


STATE OF ILLINOIS  
DEPARTMENT OF TRANSPORTATION

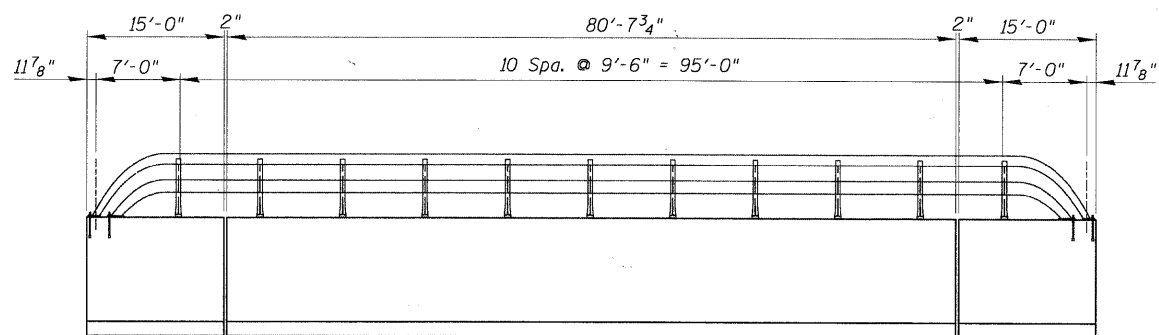
Hatched area to be poured after superstructure forms have been removed. Quantity of concrete included with Concrete Superstructure.



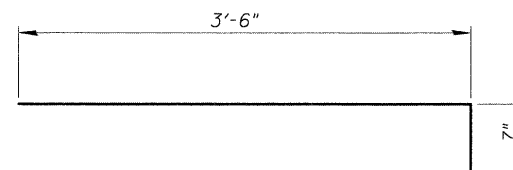
SECTION A-A



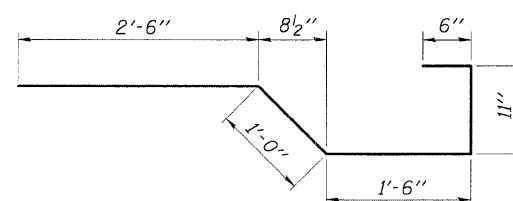
PARAPET JOINT DETAILS



RAIL POST SPACING



BAR x1(E)



BAR x(E)

DECK DETAILS  
IL RTE 53 W. FRONTAGE ROAD  
OVER SALT CREEK  
F.A.U. ROUTE 2592  
SEC. 04-00091-00-BR  
COOK COUNTY  
STATION 11+91.39  
STRUCTURE NO. 016-1122

DESIGNED -	200
CHECKED -	EXAMINED
DRAWN -	PASSED
CHECKED -	

SHEET NO. S-8 SHEETS	F.A.U. RTE.	SECTION	COUNTY	TOTAL SHEETS	SHEET NO.
	2592	04-00091-00-BR	COOK	50	32
CONTRACT NO. 63471					
FED. ROAD DIST. NO.		ILLINOIS	FED. AID PROJECT		