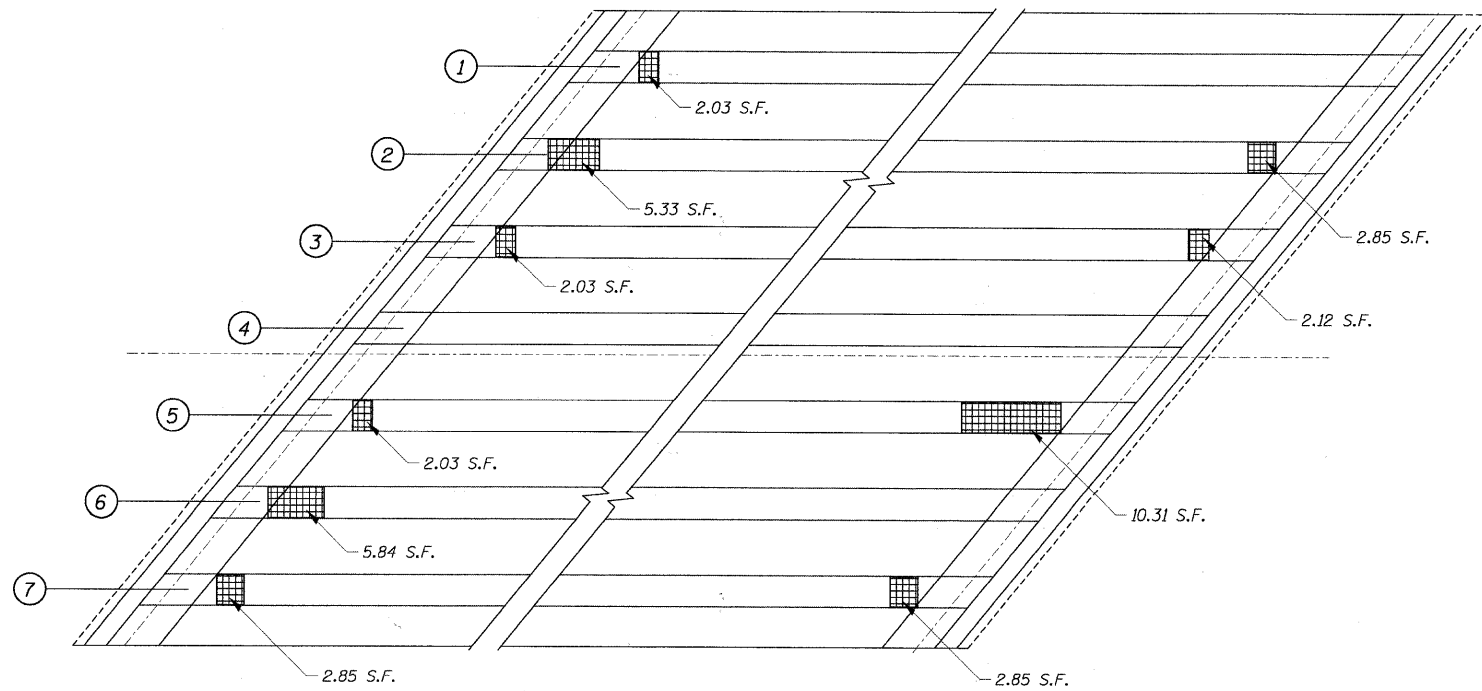
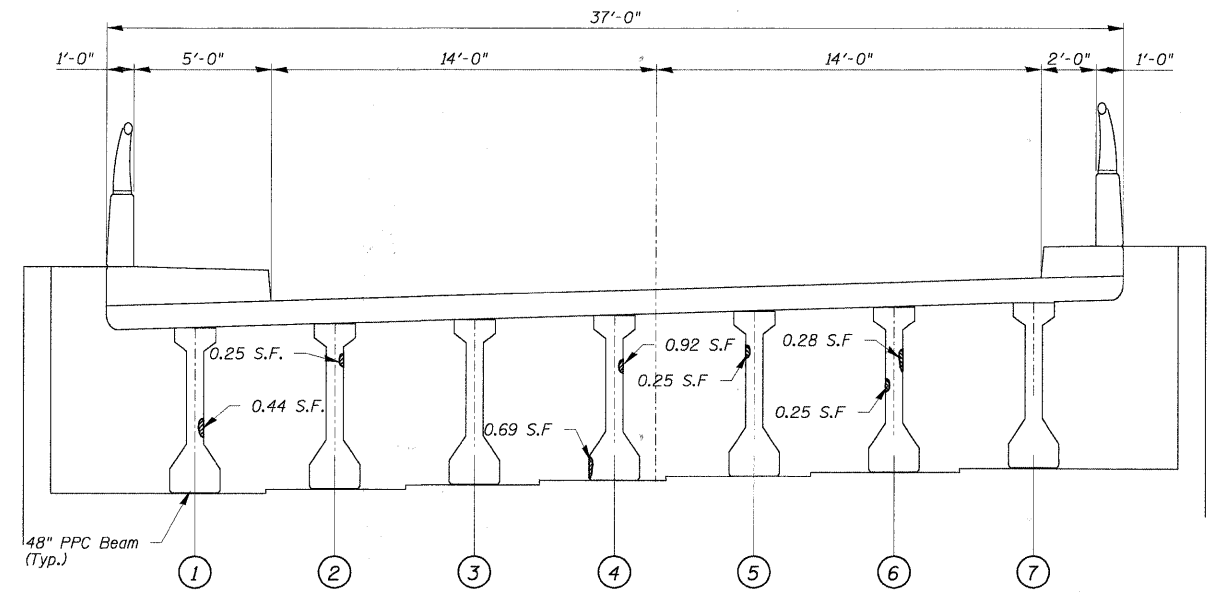


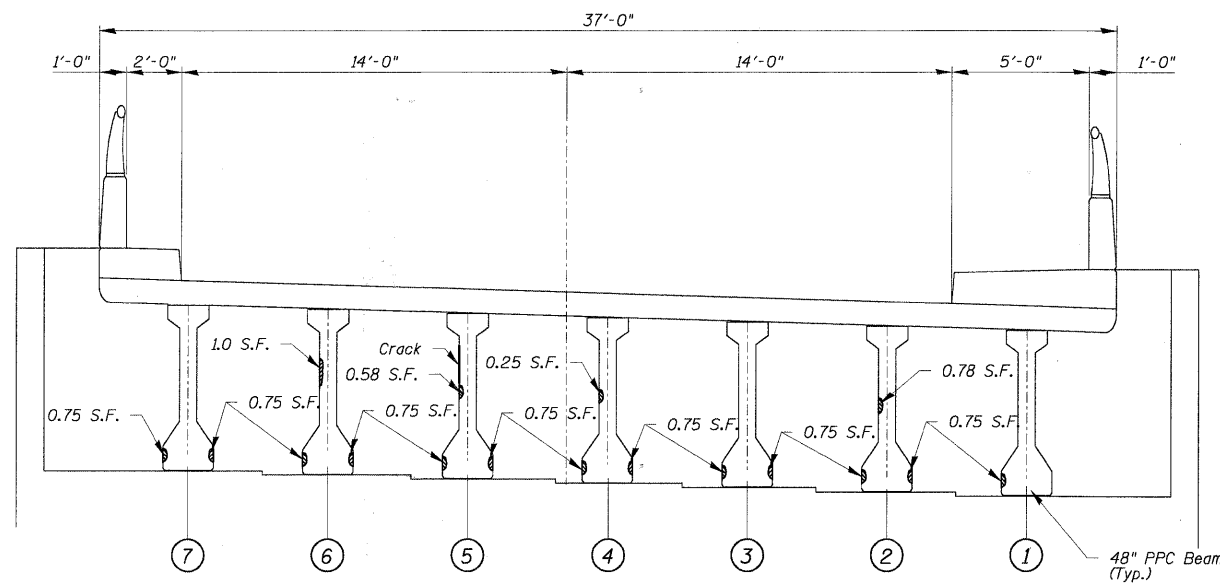
STATE OF ILLINOIS
DEPARTMENT OF TRANSPORTATION



PLAN - UNDERSIDE OF DECK



NORTH ABUTMENT



SOUTH ABUTMENT

LEGEND:

- Spalled Area With Exposed Rebar
- Spalled or Unsound Area
- Exposed Rebar

NOTES:

1. It shall be the Contractor's responsibility to use extreme caution when removing deteriorated concrete from the PPC Beams, avoiding the prestressing strands. Any damage to the prestressing strands shall be repaired or the PPC Beams replaced as directed by the Engineer at the Contractor's expense.
2. Stirrups of the existing beams shall be blast cleaned to grey metal and incorporated into new work. Cost included with "Polymer Modified Portland Cement Mortar".

TOTAL BILL OF MATERIAL

ITEM	UNIT	TOTAL
Polymer Modified Portland Cement Mortar	Sq. Ft.	16
Cleaning And Painting Exposed Rebar	Sq. Ft.	39

DESIGNED -	200
CHECKED -	
DRAWN -	
CHECKED -	

EXAMINED	ENGINEER OF BRIDGE DESIGN
PASSED	ENGINEER OF BRIDGES AND STRUCTURES

PPC I-BEAM CONCRETE REPAIR
IL RTE 53 W. FRONTAGE ROAD
OVER SALT CREEK
F.A.U. ROUTE 2592
SEC. 04-00091-00-BR
COOK COUNTY
STATION 11+91.39
STRUCTURE NO. 016-1122

SHEET NO. S-12 SHEETS	F.A.U. RTE.	SECTION	COUNTY	TOTAL SHEETS	SHEET NO.
	2592	04-00091-00-BR	COOK	50	36
FED. ROAD DIST. NO.			ILLINOIS FED. AID PROJECT	CONTRACT NO. 63471	