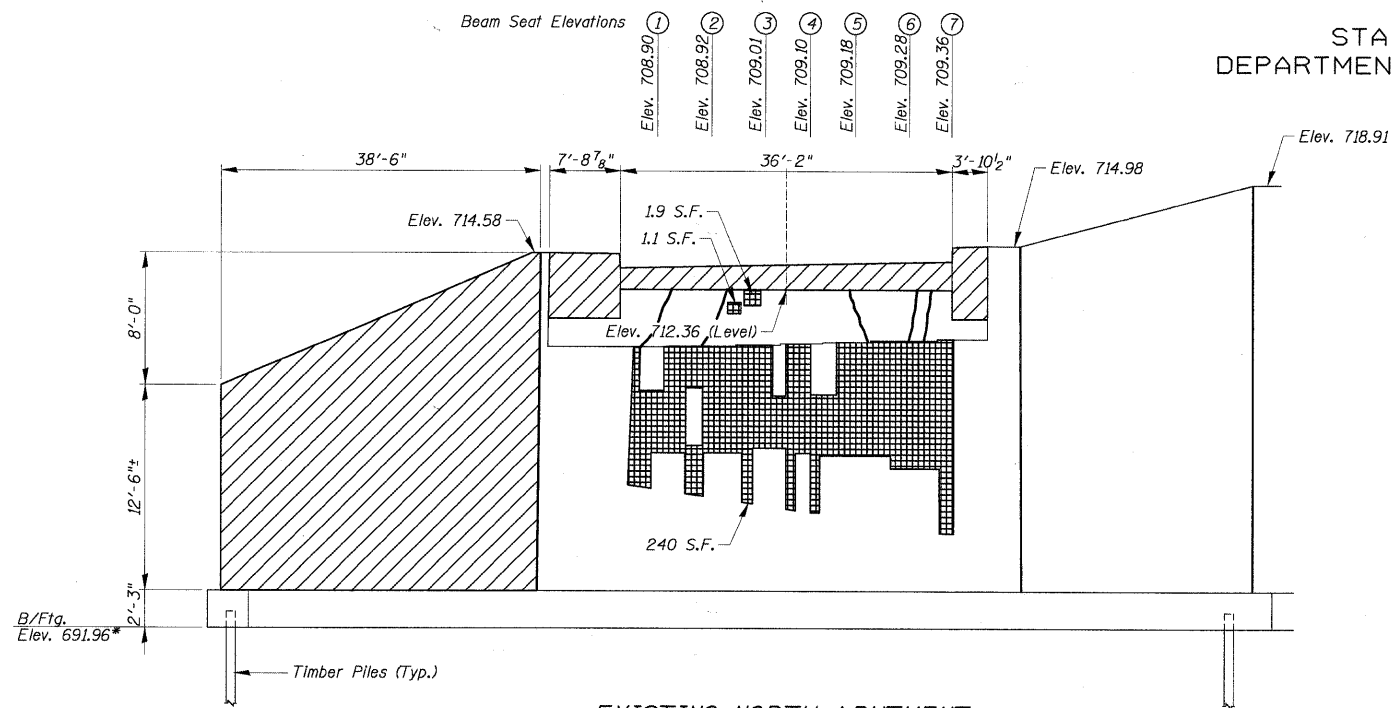
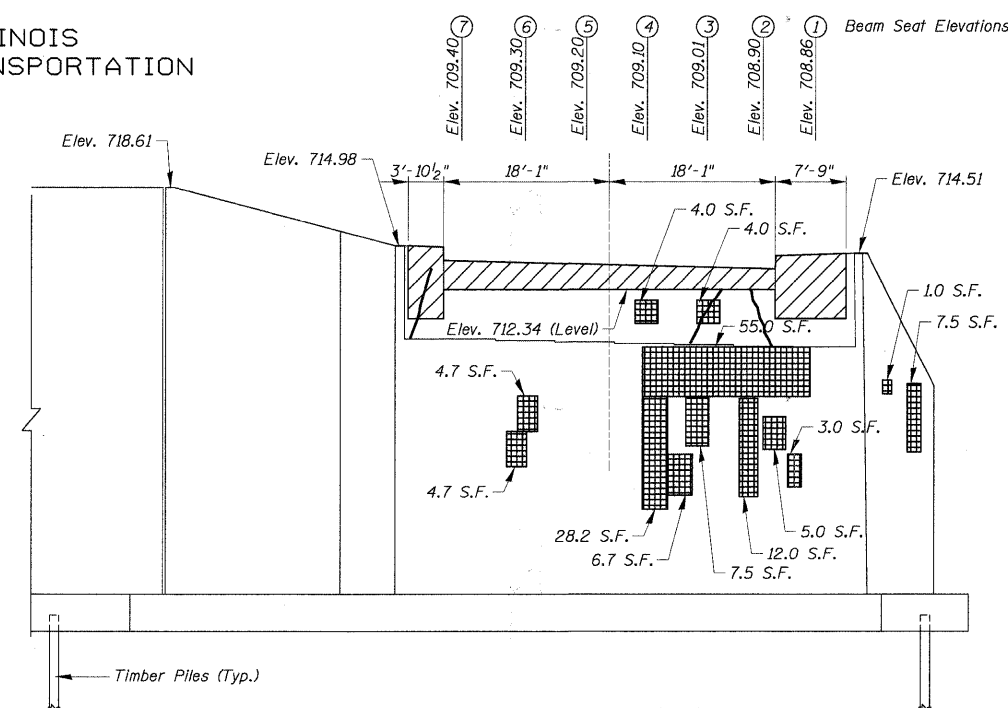


STATE OF ILLINOIS
DEPARTMENT OF TRANSPORTATION



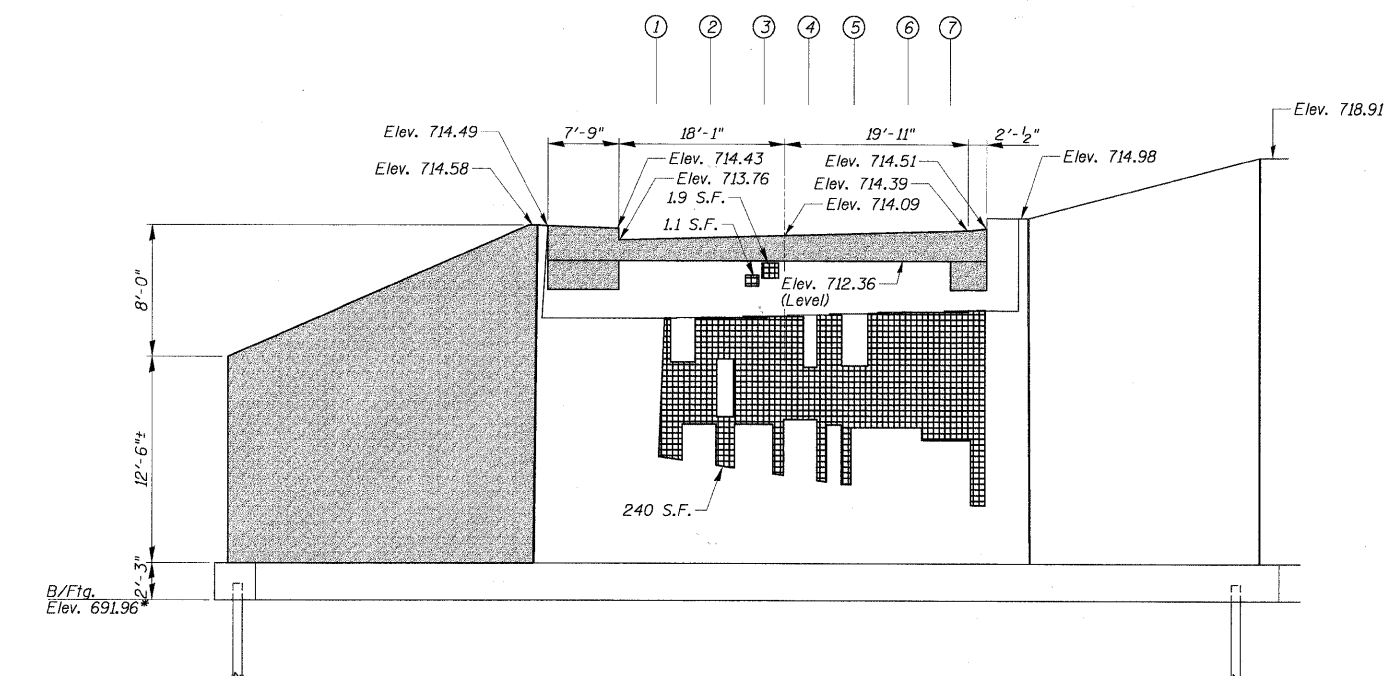
EXISTING NORTH ABUTMENT

Note: Removal of Existing Temporary Bracing System Associated With This Wingwall is Included in the Cost of "Concrete Removal."



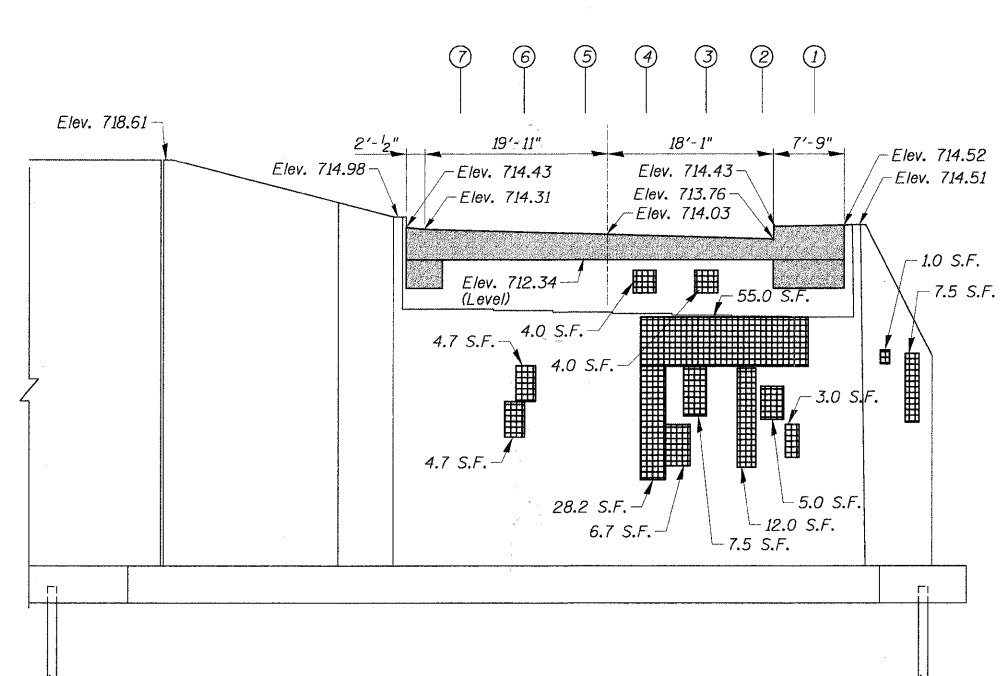
EXISTING SOUTH ABUTMENT

- LEGEND:**
- Concrete Repair
 - Concrete Removal
 - New Concrete
 - Cracks



PROPOSED NORTH ABUTMENT

* Bottom of Footing Elevations and Dimensions are from Original Design Plans



PROPOSED SOUTH ABUTMENT

TOTAL BILL OF MATERIAL

ITEM	UNIT	TOTAL
Structural Repair of Concrete (Depth Equal to or Less Than 5 In.)	Sq. Ft.	387
Epoxy Crack Injection	Lin. Ft.	35

**ABUTMENT ELEVATIONS
CONCRETE REPAIR
IL RTE 53 W. FRONTAGE ROAD
OVER SALT CREEK
F.A.U. ROUTE 2592
SEC. 04-00091-00-BR
COOK COUNTY
STATION 11+91.39
STRUCTURE NO. 016-1122**

DESIGNED	200
CHECKED	EXAMINED
DRAWN	PASSED
CHECKED	

SHEET NO.	F.A.U. RTE.	SECTION	COUNTY	TOTAL SHEETS	SHEET NO.
S-13	2592	04-00091-00-BR	COOK	50	37
CONTRACT NO. 63471			FED. ROAD DIST. NO. ILLINOIS FED. AID PROJECT		