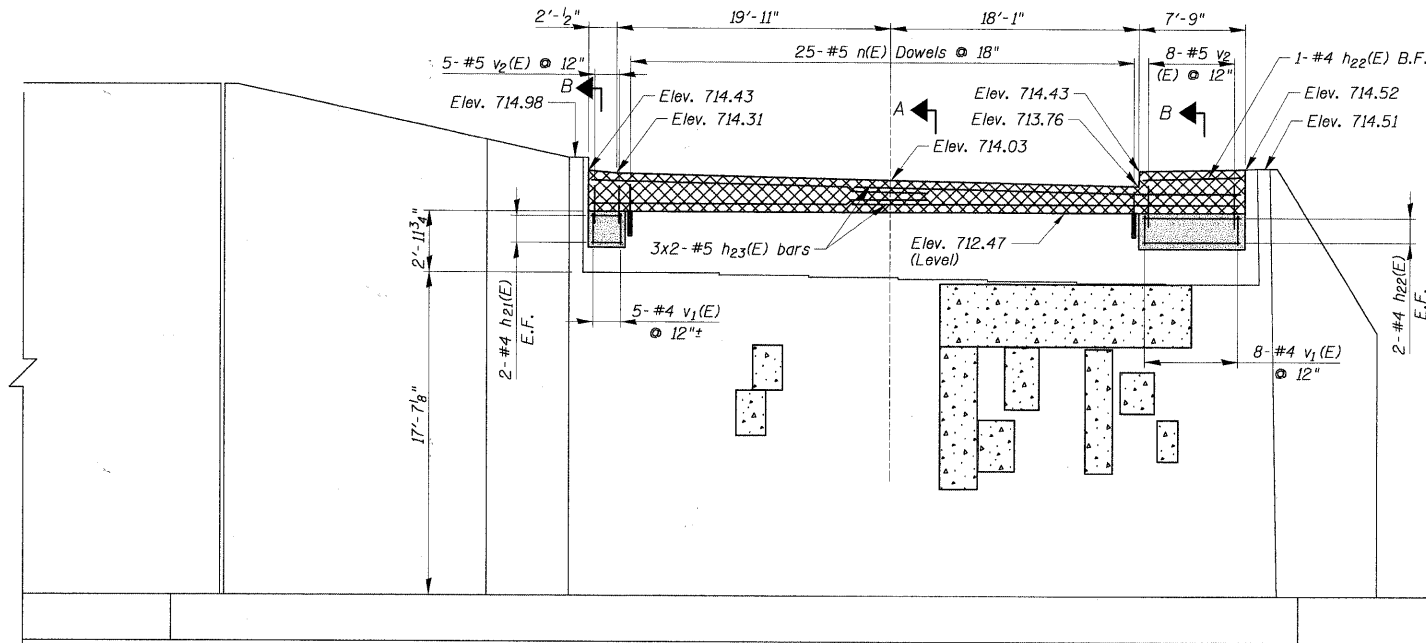
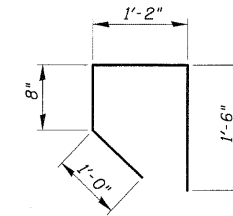


STATE OF ILLINOIS  
DEPARTMENT OF TRANSPORTATION

NOTES:  
1. See Sheet S-16 For Notes.



ELEVATION



BAR v<sub>1</sub>(E)

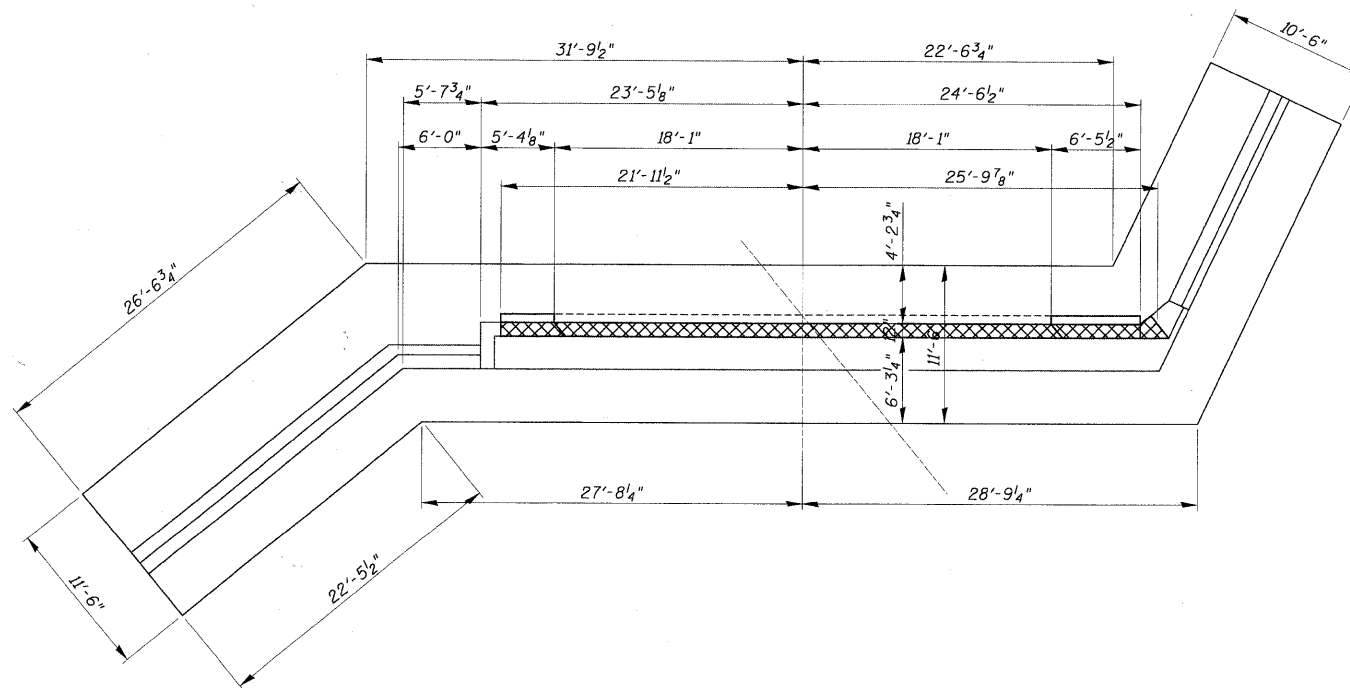
SOUTH ABUTMENT  
BILL OF MATERIAL

Bar	No.	Size	Length	Shape
h <sub>21</sub> (E)	4	#4	1'-9"	—
h <sub>22</sub> (E)	5	#4	7'-6"	—
h <sub>23</sub> (E)	6	#5	25'-0"	—
n(E)	25	#5	1'-6"	—
v <sub>1</sub> (E)	13	#4	4'-4"	□
v <sub>2</sub> (E)	13	#5	1'-9"	—
Reinforcement Bars, Epoxy Coated			Pound	290
Concrete Structure			Cu. Yds.	4.0
Drill and Grout Bars			Each	25

Bars indicated thus 1 x 3 - #8 etc. indicates 1 line of bars with 3 lengths per line.

LEGEND:

- Concrete Repair
- New Concrete
- To Be Poured After Deck Slab Forms Have Been Removed



PLAN

SOUTH ABUTMENT PLAN & ELEVATION  
IL RTE 53 W. FRONTAGE ROAD  
OVER SALT CREEK  
F.A.U. ROUTE 2592  
SEC. 04-00091-00-BR  
COOK COUNTY  
STATION 11+91.39  
STRUCTURE NO. 016-1122

DESIGNED -	200
CHECKED -	EXAMINED
DRAWN -	PASSED
CHECKED -	ENGINEER OF BRIDGES AND STRUCTURES

SHEET NO. S-15 SHEETS	F.A.U. RTE.	SECTION	COUNTY	TOTAL SHEETS	SHEET NO.
	2592	04-00091-00-BR	COOK	50	39
FED. ROAD DIST. NO.			ILLINOIS	FED. AID PROJECT	
CONTRACT NO. 63471					