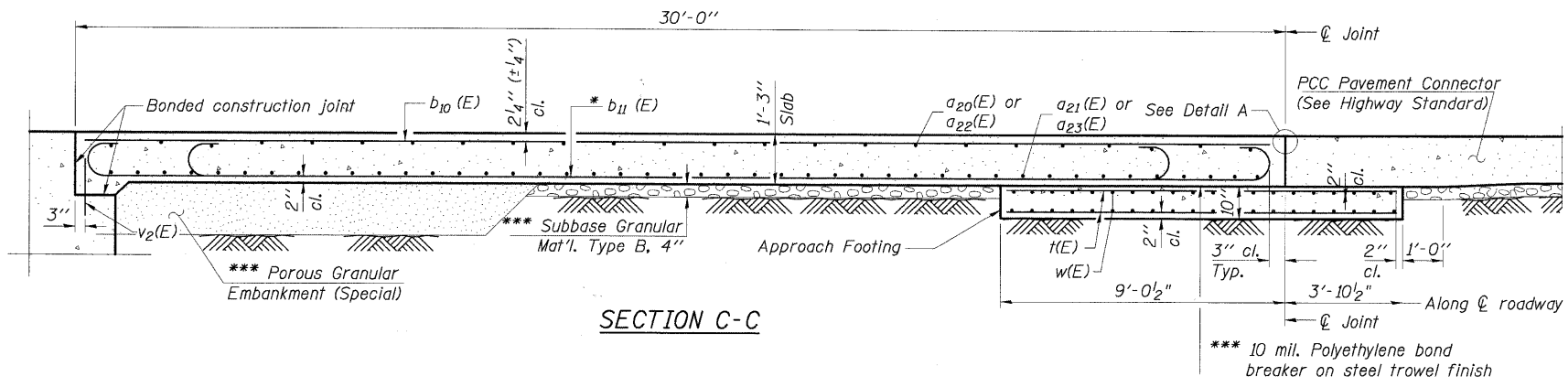


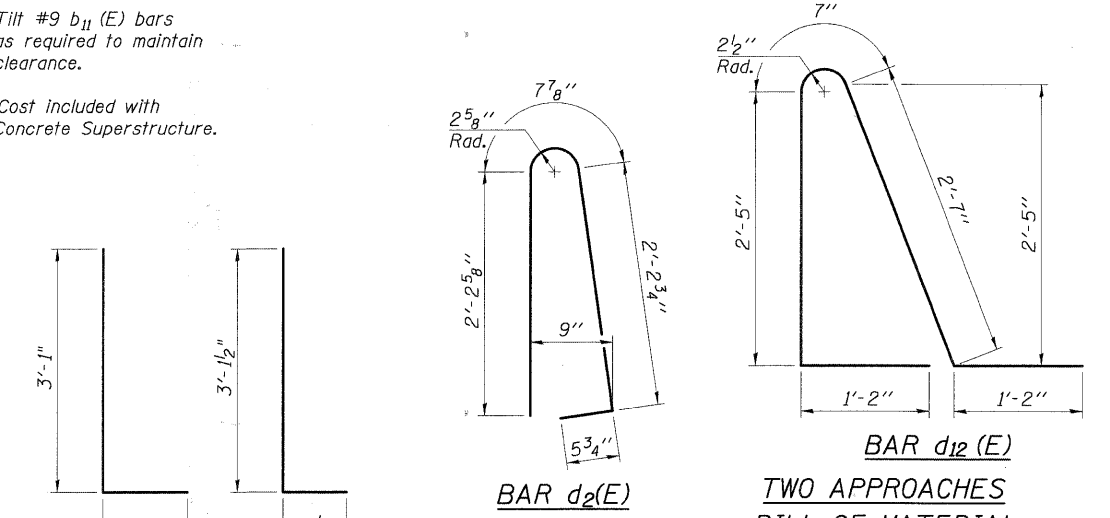
STATE OF ILLINOIS
DEPARTMENT OF TRANSPORTATION

Notes:
See sheet S-17 for Detail A
Approach slab, sidewalk and parapet concrete shall be paid for as Concrete Superstructure.
Approach footing concrete shall be paid for as Concrete Structures.
Reinforcement shall be paid for as Reinforcement Bars, Epoxy Coated.
For $v_2(E)$ bar details, see sheet S-16.
The approach footing maximum applied service bearing pressure (Q_{max}) = 2.0 ksf.
Cost of excavation for approach footing included with Concrete Structures.



SECTION C-C

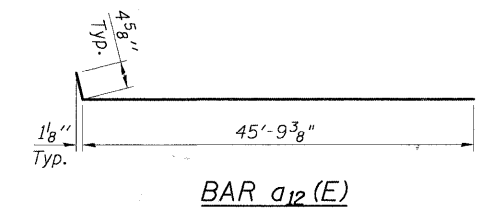
* Tilt #9 $b_{11}(E)$ bars as required to maintain clearance.
*** Cost included with Concrete Superstructure.



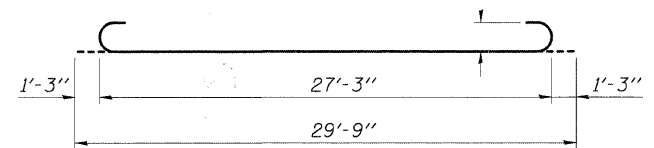
BAR $d_{12}(E)$
TWO APPROACHES
BILL OF MATERIAL

Bar	No.	Size	Length	Shape
$a_{20}(E)$	24	#6	6'-0"	—
$a_{20}(E)$	26	#4	47'-2"	—
$a_{21}(E)$	46	#5	47'-2"	—
$a_{22}(E)$	26	#4	46'-2"	—
$a_{23}(E)$	46	#5	45'-8"	—
$b_{10}(E)$	78	#4	29'-8"	—
$b_{11}(E)$	178	#9	29'-9"	—
$b_{12}(E)$	4	#4	14'-8"	—
$b_{13}(E)$	16	#5	29'-8"	—
$c(E)$	60	#5	2'-4"	—
$c_1(E)$	30	#5	5'-6"	—
$c_2(E)$	30	#5	5'-5"	—
$d_2(E)$	34	#5	5'-7"	—
$d_4(E)$	8	#4	2'-0"	—
$d_{10}(E)$	30	#4	4'-11"	—
$d_{11}(E)$	30	#6	4'-0"	—
$d_{12}(E)$	34	#5	7'-11"	—
$e_{10}(E)$	28	#4	14'-8"	—
$e_{11}(E)$	2	#8	14'-8"	—
$f_{10}(E)$	148	#4	12'-6"	—
$w_{10}(E)$	80	#5	46'-6"	—
Concrete Superstructure		Cu. Yd.	114.7	
Concrete Structures		Cu. Yd.	28.6	
Reinforcement Bars, Epoxy Coated		Pound	33,030	

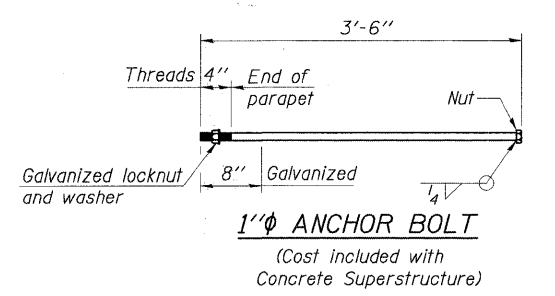
BAR $d_{10}(E)$ BAR $d_{11}(E)$



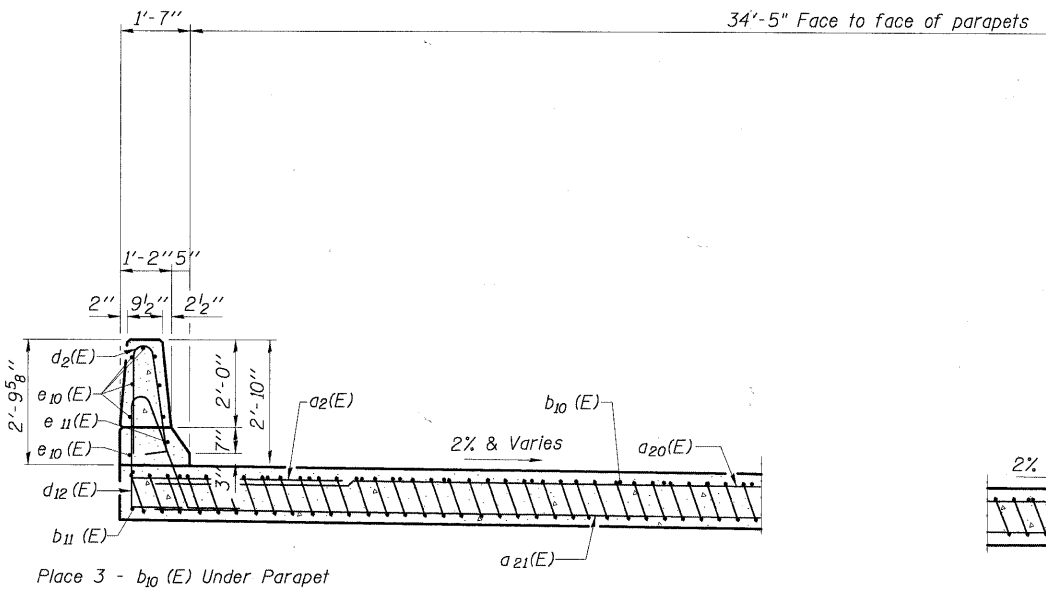
BAR $a_{12}(E)$



BAR $b_{11}(E)$

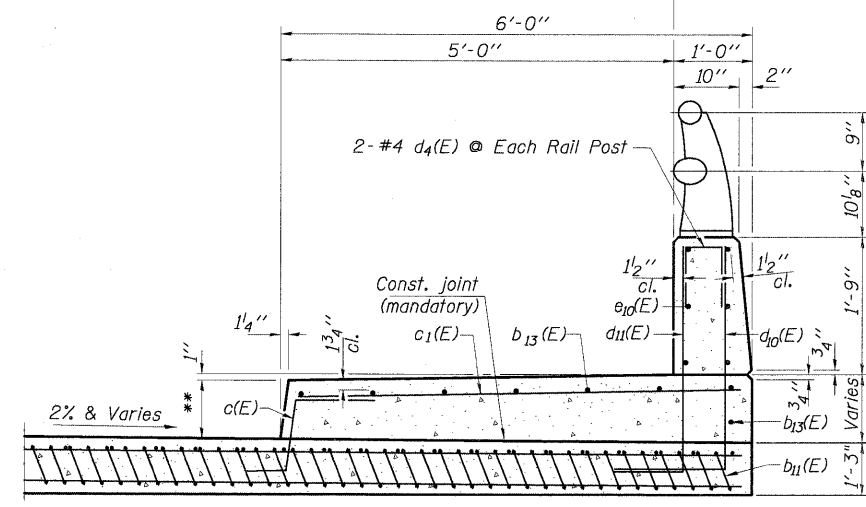


1" ANCHOR BOLT
(Cost included with Concrete Superstructure)

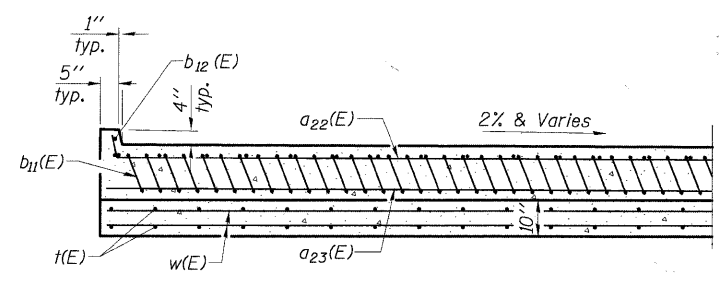


SECTION D-D - NEAR ABUTMENT
(See Plan for dimensions not shown)

** Vary sidewalk thickness. Thickness is 9" at abutments and decreases to 6" at the ends of the approach pavement.



SECTION D-D - AT APPROACH FOOTING
(See Plan for dimensions not shown)



BAR $c_2(E)$

BAR $d_4(E)$

BAR $c(E)$

DESIGNED	200
CHECKED	EXAMINED
DRAWN	PASSED
CHECKED	

(Sheet 2 of 2)
BRIDGE APPROACH SLAB DETAILS
IL RTE 53 W. FRONTAGE ROAD
OVER SALT CREEK
F.A.U. ROUTE 2592
SEC. 04-00091-00-BR
COOK COUNTY
STATION 11+91.39
STRUCTURE NO. 016-1122

SHEET NO. S-18 SHEETS	F.A.U. RTE.	SECTION	COUNTY	TOTAL SHEETS	SHEET NO.
	2592	04-00091-00-BR	COOK	50	42
FED. ROAD DIST. NO.			ILLINOIS	FED. AID PROJECT	
			CONTRACT NO. 63471		