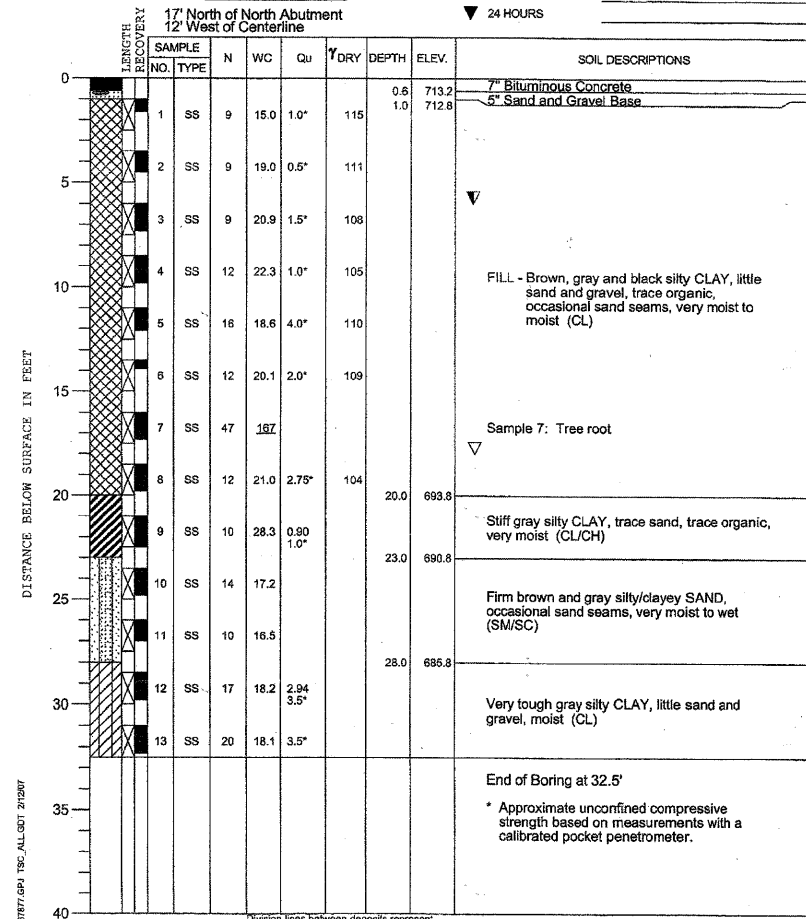


STATE OF ILLINOIS  
DEPARTMENT OF TRANSPORTATION

PROJECT **West Frontage Road Bridge, IL-53 at Salt Creek, Rolling Meadows, Illinois**  
 CLIENT **Christopher B. Burke Engineering, Ltd., Rosemont, Illinois**  
 BORING **1** DATE STARTED **1-17-07** DATE COMPLETED **1-17-07** JOB **L-67,877**  
 ELEVATIONS  
 GROUND SURFACE **713.8** WATER LEVEL OBSERVATIONS  
 END OF BORING **681.3** WHILE DRILLING **6.0'**  
 AT END OF BORING **18.0'**  
 24 HOURS



DRILL RIG NO. **315**  
 Division lines between deposits represent approximate boundaries between soil types; in-situ, the transition may be gradual.

SOIL BORING  
 IL RTE 53 W. FRONTAGE ROAD  
 OVER SALT CREEK  
 F.A.U. ROUTE 2592  
 SEC. 04-00091-00-BR  
 COOK COUNTY  
 STATION 11+91.39  
 STRUCTURE NO. 016-1122

DESIGNED -	200
CHECKED -	EXAMINED
DRAWN -	PASSED
CHECKED -	

SHEET NO. S-19 SHEETS	F.A.U. RTE.	SECTION	COUNTY	TOTAL SHEETS	SHEET NO.
	2592	04-00091-00-BR	COOK	50	43
CONTRACT NO. 63471					
FED. ROAD DIST. NO.		ILLINOIS	FED. AID PROJECT		