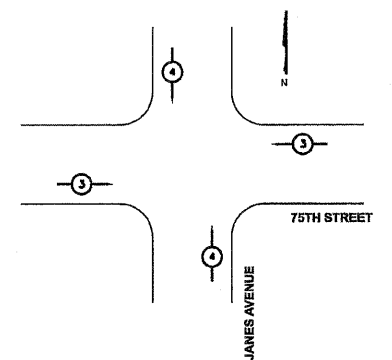


EMERGENCY VEHICLE PREEMPTOR	1	2
MOVEMENT	←	

EXISTING EMERGENCY VEHICLE PREEMPTION SEQUENCE



EMERGENCY VEHICLE PREEMPTOR	3	4
MOVEMENT	←	

PROPOSED EMERGENCY VEHICLE PREEMPTION SEQUENCE

NOTE: EQUIPMENT SHALL BE PROVIDED TO CONTROL THE 4 310 WATT LUMINAIRES MOUNTED ON THE COMBO POLES. EQUIPMENT SHALL INCLUDE A BREAKER BOX MOUNTED INSIDE THE CABINET. THE COST SHALL BE INCIDENTAL TO THE CONTROLLER AND CABINET.

SCHEDULE OF QUANTITIES

67100100	MOBILIZATION	L SUM	0.06
70102630	TRAFFIC CONTROL AND PROTECTION, STANDARD 701601	L SUM	0.06
70102635	TRAFFIC CONTROL AND PROTECTION, STANDARD 701701	L SUM	0.06
70102640	TRAFFIC CONTROL AND PROTECTION, STANDARD 701801	L SUM	0.06
85000200	MAINTENANCE OF EXISTING TRAFFIC SIGNAL INSTALLATION	EACH	1
85700200	FULL-ACTUATED CONTROLLER AND TYPE IV CABINET	EACH	1
86400100	TRANSCEIVER - FIBER OPTIC	EACH	1
87502500	TRAFFIC SIGNAL POST, GALVANIZED STEEL 16 FT	EACH	4
87900200	DRILL EXISTING HANDHOLE	EACH	1
88030020	SIGNAL HEAD, LED, 1-FACE, 3-SECTION, MAST-ARM MOUNTED	EACH	6
88030110	SIGNAL HEAD, LED, 1-FACE, 5-SECTION, MAST-ARM MOUNTED	EACH	4
88030210	SIGNAL HEAD, LED, 2-FACE, 3-SECTION, BRACKET MOUNTED	EACH	2
88030220	SIGNAL HEAD, LED, 2-FACE, 5-SECTION, BRACKET MOUNTED	EACH	2
88102717	PEDESTRIAN SIGNAL HEAD, LED, 1-FACE, BRACKET MOUNTED WITH COUNTDOWN TIMER	EACH	4
88102747	PEDESTRIAN SIGNAL HEAD, LED, 2-FACE, BRACKET MOUNTED WITH COUNTDOWN TIMER	EACH	1
88200110	TRAFFIC SIGNAL BACKPLATE, LOUVERED	EACH	10
88500100	INDUCTIVE LOOP DETECTOR	EACH	10
88800100	PEDESTRIAN PUSH BUTTON	EACH	6
89501410	RELOCATE EXISTING EMERGENCY VEHICLE PRIORITY SYSTEM, PHASING UNIT	EACH	1
89502350	REMOVE AND REINSTALL ELECTRIC CABLE FROM CONDUIT	FOOT	240
89502375	REMOVE EXISTING TRAFFIC SIGNAL EQUIPMENT	EACH	1
X8050015	SERVICE INSTALLATION, POLE MOUNT	EACH	1
X8620020	UNINTERRUPTIBLE POWER SUPPLY	EACH	1
X8730027	ELECTRIC CABLE IN CONDUIT, GROUNDING, NO. 6 1C	FOOT	165
X0325705	RE-OPTIMIZE TRAFFIC SIGNAL SYSTEM, LEVEL 2	EACH	1

TYPE	NO. LAMPS	WATTAGE		OPERATION (%)	TOTAL WATTAGE
		INCAND.	LED		
RED BALL	18	135	10	0.60	108
YELLOW BALL	14	135	22	0.03	9
GREEN BALL	14	135	12	0.37	62
RED ARROW		135	5	0.85	
YELLOW ARROW	11	135	10	0.02	2.2
GREEN ARROW	11	135	5	0.13	7.1
PED - WALK	6	90	5	0.05	1.5
PED - DON'T WALK	6	90	6	0.95	34
CONTROLLER	1	100		1.00	100
LUMINAIRE		310		0.50	
TOTAL=					324

NAME	DATE

DUPAGE COUNTY DIVISION OF TRANSPORTATION
EXIST AND PROPOSED CABLE PLAN AND PHASE DIAGRAM
75TH STREET & JANES AVENUE
 SCALE: NONE
 DATE: 4/23/10
 DRAWN BY: TH
 DESIGNED BY: TH
 CHECKED BY: DAZ