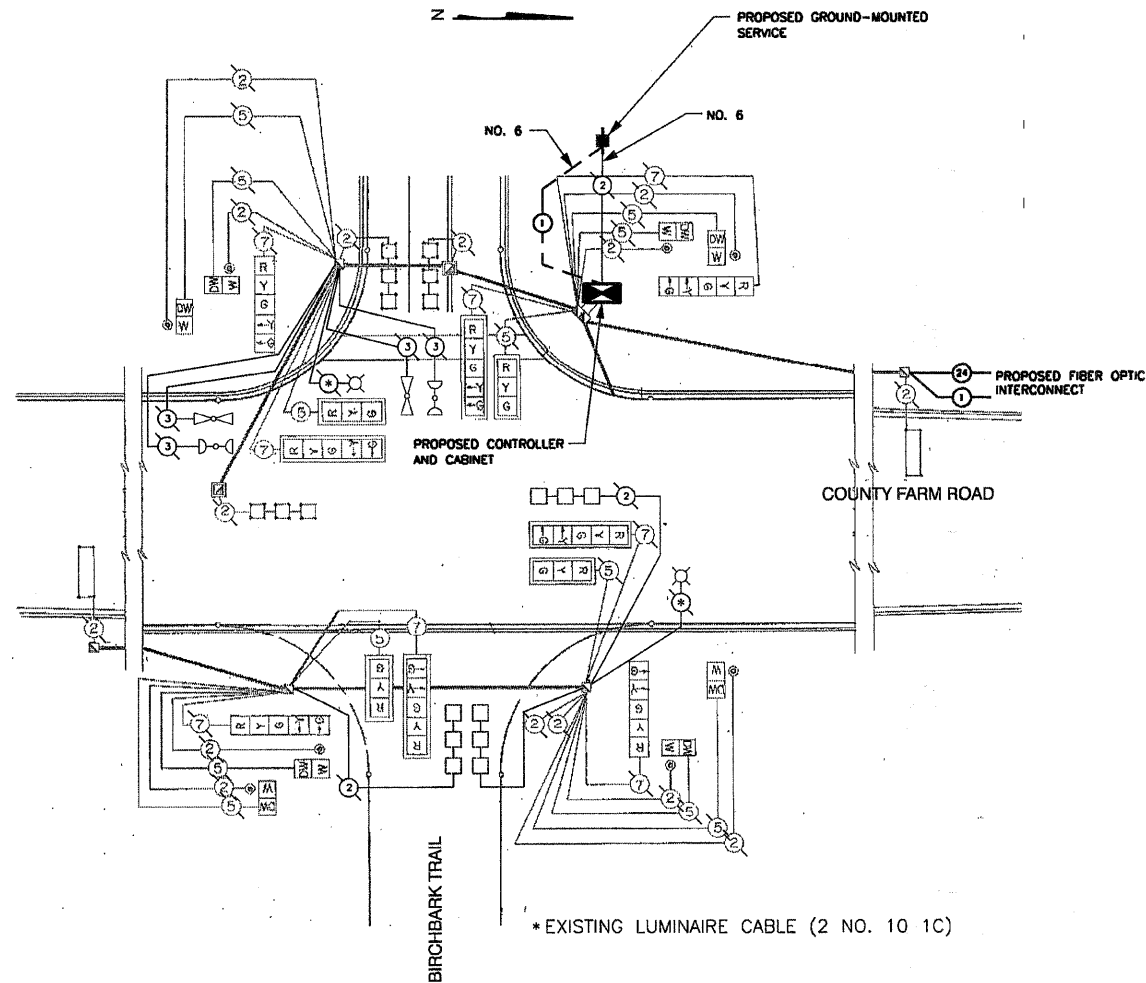
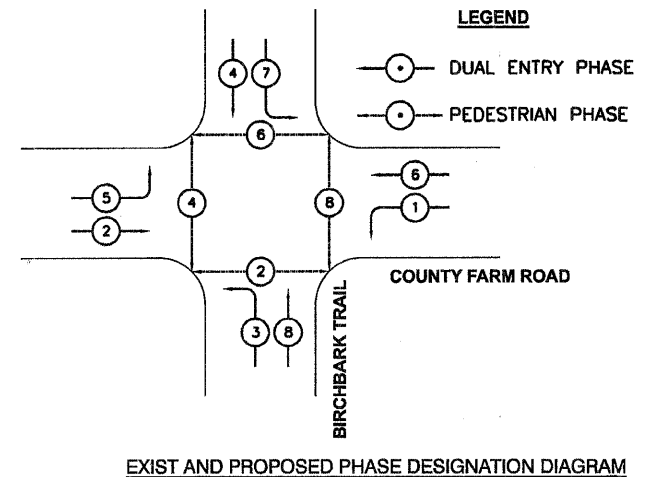


CABLE PLAN

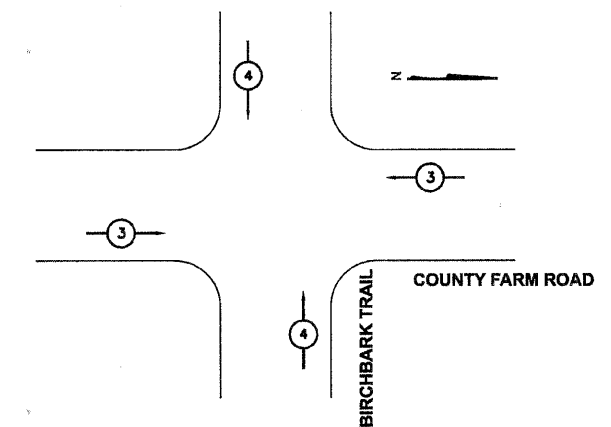


NOTE: EQUIPMENT SHALL BE PROVIDED TO CONTROL THE (2) 310 WATT LUMINAIRES MOUNTED ON THE COMBO POLES. EQUIPMENT SHALL INCLUDE A BREAKER BOX MOUNTED INSIDE THE CABINET. THE COST SHALL BE INCIDENTAL TO THE CONTROLLER AND CABINET.

LEGEND



EXIST AND PROPOSED PHASE DESIGNATION DIAGRAM



PROPOSED EMERGENCY VEHICLE PREEMPTORS		
EMERGENCY VEHICLE PREEMPTOR	3	4
MOVEMENT	→	

EXIST AND PROPOSED EMERGENCY VEHICLE PREEMPTION SEQUENCE

SCHEDULE OF QUANTITIES

67100100	MOBILIZATION	L SUM	0.06
70102630	TRAFFIC CONTROL AND PROTECTION, STANDARD 701601	L SUM	0.06
70102635	TRAFFIC CONTROL AND PROTECTION, STANDARD 701701	L SUM	0.06
70102640	TRAFFIC CONTROL AND PROTECTION, STANDARD 701801	L SUM	0.06
85000200	MAINTENANCE OF EXISTING TRAFFIC SIGNAL INSTALLATION	EACH	1
85700200	FULL-ACTUATED CONTROLLER AND TYPE IV CABINET	EACH	1
86400100	TRANSCEIVER - FIBER OPTIC	EACH	1
87900200	DRILL EXISTING HANDHOLE	EACH	1
88500100	INDUCTIVE LOOP DETECTOR	EACH	8
89501410	RELOCATE EXISTING EMERGENCY VEHICLE PRIORITY SYSTEM, PHASING UNIT	EACH	1
89502375	REMOVE EXISTING TRAFFIC SIGNAL EQUIPMENT	EACH	1
X8050010	SERVICE INSTALLATION, GROUND MOUNT	EACH	1
X8730027	ELECTRIC CABLE IN CONDUIT, GROUNDING, NO. 6 1C	FOOT	21
X0325705	RE-OPTIMIZE TRAFFIC SIGNAL SYSTEM, LEVEL 2	EACH	1

DU PAGE COUNTY D.O.T TRAFFIC SIGNAL INSTALLATION ELECTRICAL SERVICE REQUIREMENTS					TOTAL WATTAGE
TYPE	NO. LAMPS	WATTAGE		OPERATION (%)	
		INCAND.	LED		
RED BALL	12	135	10	0.60	972
YELLOW BALL	12	135	22	0.03	49
GREEN BALL	12	135	12	0.37	599
RED ARROW		135	5	0.85	
YELLOW ARROW	8	135	10	0.02	22
GREEN ARROW	8	135	5	0.13	140
PED - WALK	8	90	5	0.05	54
PED - DON'T WALK	8	90	6	0.95	1026
CONTROLLER	1	100		1.00	100
LUMINAIRE	2	310		0.50	310
TOTAL=					3272

REVISIONS	
NAME	DATE

DUPAGE COUNTY DIVISION OF TRANSPORTATION
COUNTY FARM RD & BIRCHBARK TR
 EXIST AND PROPOSED CABLE DIAGRAM,
 PHASING DIAGRAM AND SCHEDULE OF
 QUANTITIES

SCALE: NONE
 DATE: 4/23/10

DRAWN BY: TH
 DESIGNED BY: TH
 CHECKED BY: DAZ